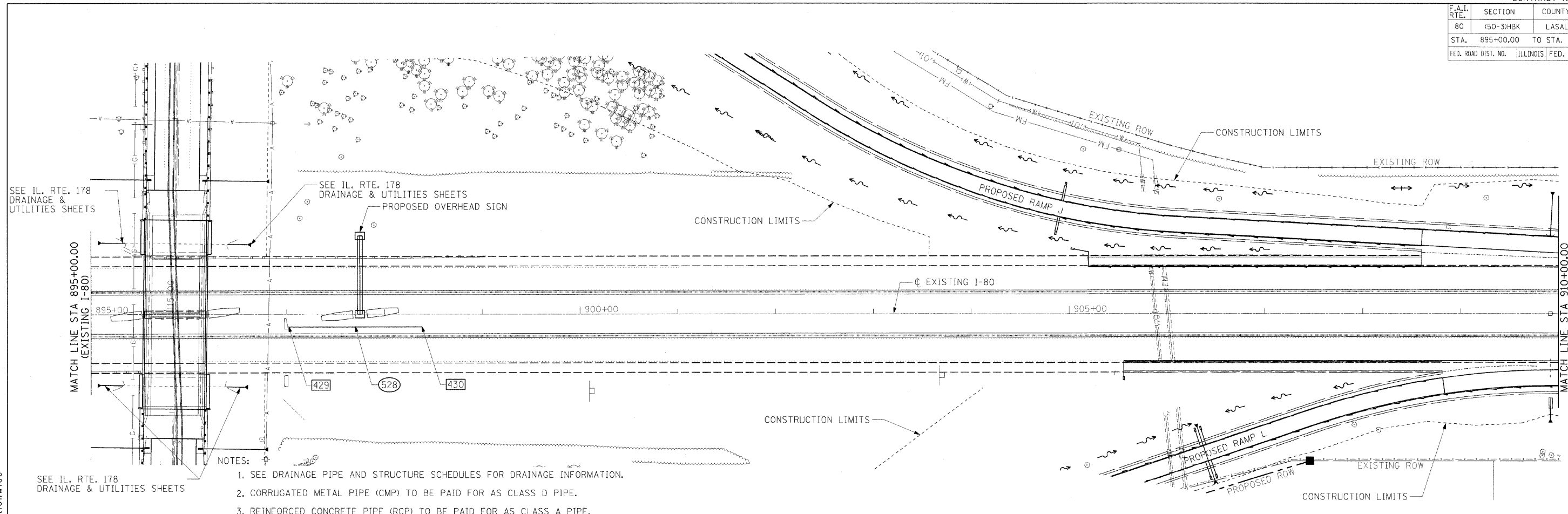


F.A.I. RTE.	SECTION	COUNTY	TOTAL SHEETS	SHEET NO.
80	150-318K	LASALLE	492	201
STA. 895+00.00 TO STA. 29+00.00				
FED. ROAD DIST. NO.		ILLINOIS	FED. AID PROJECT	



SEE IL. RTE. 178 DRAINAGE & UTILITIES SHEETS

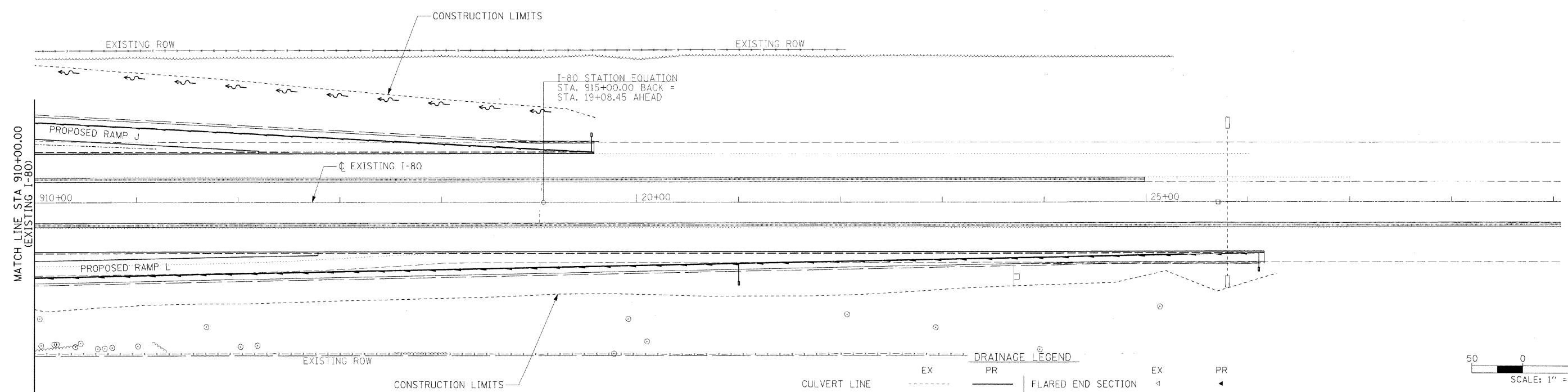
SEE IL. RTE. 178 DRAINAGE & UTILITIES SHEETS  
PROPOSED OVERHEAD SIGN

- NOTES:
1. SEE DRAINAGE PIPE AND STRUCTURE SCHEDULES FOR DRAINAGE INFORMATION.
  2. CORRUGATED METAL PIPE (CMP) TO BE PAID FOR AS CLASS D PIPE.
  3. REINFORCED CONCRETE PIPE (RCP) TO BE PAID FOR AS CLASS A PIPE.

SEE IL. RTE. 178 DRAINAGE & UTILITIES SHEETS

**HANSON**  
Hanson Professional Services Inc.  
1525 South Sixth Street  
Springfield, Illinois 62703-2886  
Offices Nationwide

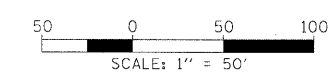
© Copyright Hanson Professional Services Inc. 2009



I-80 STATION EQUATION  
STA. 915+00.00 BACK =  
STA. 19+08.45 AHEAD

**DRAINAGE LEGEND**

CULVERT LINE	EX	PR	FLARED END SECTION	EX	PR
LEFT DITCH PROFILE	---	---	INLET	◁	◁
RIGHT DITCH PROFILE	---	---	MANHOLE	○	○
SANITARY SEWER	→	→	PIPE DRAIN HEADWALL	▬	▬
STORM SEWER	→	→	RIPRAP	▭	▭
HEADWALL	⌒	⌒	PIPE CALL-OUT	200	300
SUMMIT	↔	↔	END OF PIPE LOCATION	⊥	⊥
ROADWAY DITCH FLOW	→	→	PIPE UNDERDRAIN (DOUBLE)	▬	▬
SWALE	→	→			
PIPE UNDERDRAIN (SINGLE)	▬	▬			



REVISIONS	
NAME	DATE

ILLINOIS DEPARTMENT OF TRANSPORTATION

**PROPOSED I-80  
DRAINAGE PLAN SHEET  
STA. 895+00.00 TO STA. 29+00.00**

SCALE: VERT. 1" = 50'  
HORIZ. 1" = 50'

DRAWN BY KET  
CHECKED BY

LAYOUT	KET	01/22/06
DRAWN	KET	01/22/06
REVIEWED	MTM	10/17/07

MODEL NAME = I-80 Sht. 2  
PLOT DATE = 12/23/2009  
PLOT SCALE = 50.0000  
USER NAME = John-000344