

F.A.I. RTE.	SECTION	COUNTY	TOTAL SHEETS	SHEET NO.
80	150-3H8K	LASALLE	492	228
STA. 96+45.0 TO STA. 139+57.2				
FED. ROAD DIST. NO.		ILLINOIS	FED. AID PROJECT	

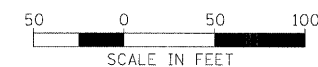
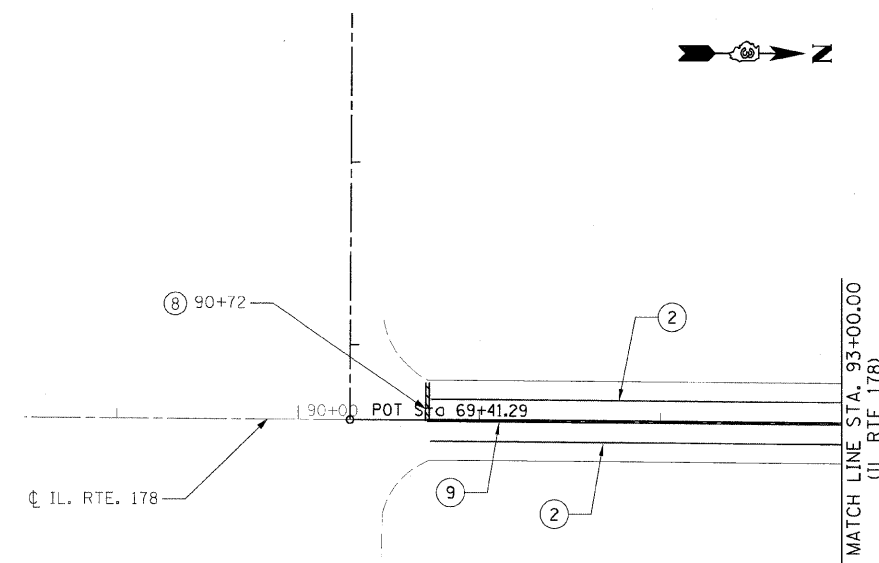
THIS SPACE INTENTIONALLY LEFT BLANK

NOTES:

1. ALL PAVEMENT MARKINGS ON IL ROUTE 178 SHALL BE POLYUREA PAVEMENT MARKINGS
2. SEE PAVEMENT MARKING DETAILS SHEET FOR ADDITIONAL PAVEMENT MARKING AND RAISED REFLECTIVE PAVEMENT MARKER LAYOUT.

PROPOSED PAVEMENT MARKING LEGEND

- ① POLYUREA PAVEMENT MARKING TYPE I - LINE 4" (YELLOW)
- ② POLYUREA PAVEMENT MARKING TYPE I - LINE 4" (WHITE)
- ③ POLYUREA PAVEMENT MARKING TYPE I - LETTERS & SYMBOLS (WHITE)
- ④ POLYUREA PAVEMENT MARKING TYPE I - LINE 6" (YELLOW SKIP DASH)
- ⑤ POLYUREA PAVEMENT MARKING TYPE I - LINE 8" (WHITE)
- ⑥ POLYUREA PAVEMENT MARKING TYPE I - LINE 8" (DOTTED WHITE)
- ⑦ POLYUREA PAVEMENT MARKING TYPE I - LINE 12" (WHITE)
- ⑧ POLYUREA PAVEMENT MARKING TYPE I - LINE 24" (STOP BAR - WHITE)
- ⑨ POLYUREA PAVEMENT MARKING TYPE I - LINE 4" (DOUBLE YELLOW CENTERLINE)
- ⑩ PREFORMED PLASTIC PAVEMENT MARKING, TYPE B - INLAID - LINE 6" (WHITE)
- ⑪ THERMOPLASTIC PAVEMENT MARKING - LINE 4" (YELLOW)
- ⑫ THERMOPLASTIC PAVEMENT MARKING - LINE 4" (WHITE)
- ⑬ THERMOPLASTIC PAVEMENT MARKING - LINE 8" (DOTTED WHITE)
- ⑭ THERMOPLASTIC PAVEMENT MARKING - LINE 8" (WHITE)
- ⑮ RAISED REFLECTIVE PAVEMENT MARKER



REVISIONS	
NAME	DATE

ILLINOIS DEPARTMENT OF TRANSPORTATION

PAVEMENT MARKING PLANS
IL ROUTE 178 (UTICA ROAD)

SCALE: VERT. 1"=50'
HORIZ. 1"=50'

DRAWN BY JAP
CHECKED BY