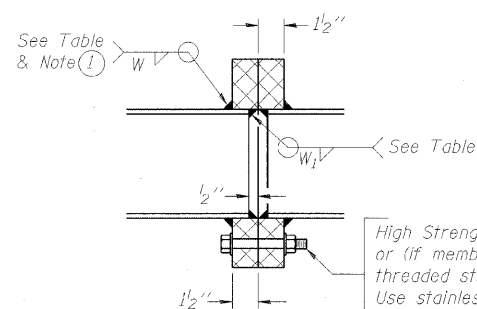


F.A.I. RTE.	SECTION	COUNTY	TOTAL SHEETS	SHEET NO.
80	150-31HBK	LASALLE	492	249
STA.		TO STA.		
FED. ROAD DIST. NO.		ILLINOIS FED. AID PROJECT		

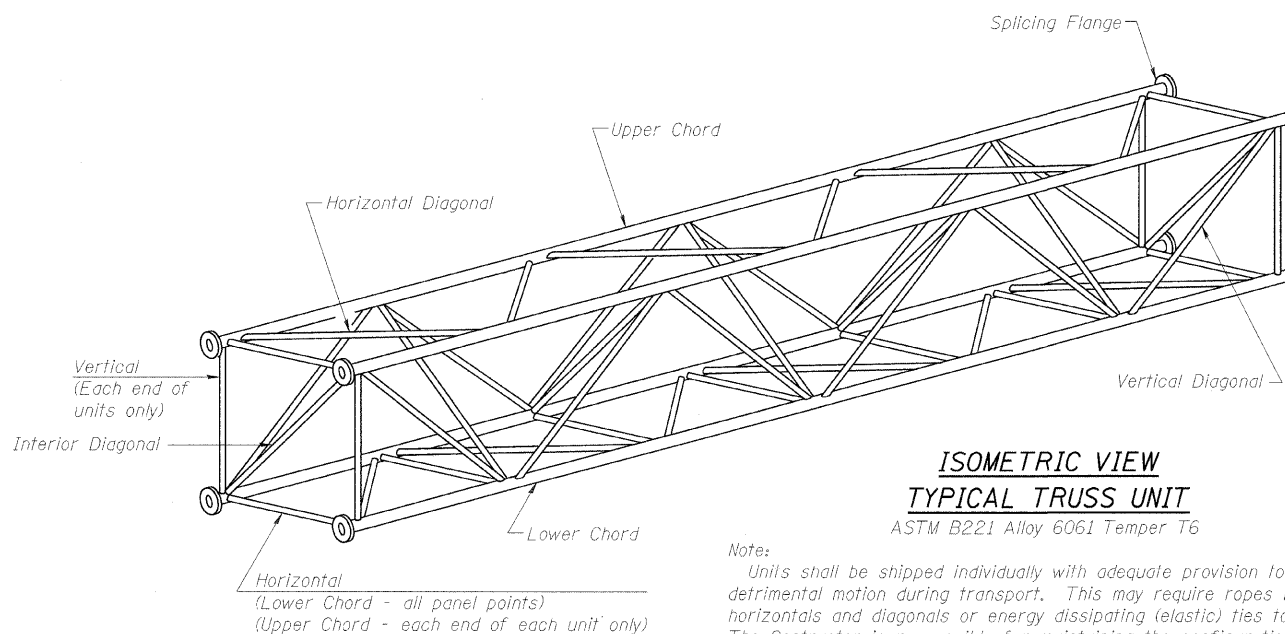
**TRUSS UNIT TABLE**

Structure Number	Station	Design Truss Type	Exterior Units (2)			Interior Unit				Upper & Lower Chord		Verticals; Horizontals; Vertical, Horizontal, and Interior Diagonals		Camber at Midspan	Splicing Flange					
			No. Panels per Unit	Unit Lgth.(L <sub>e</sub> )	Panel Lgth.(P)	No. Req'd.	No. Panels per Unit	Unit Lgth.(L <sub>i</sub> )	Panel Lgth.(P)	O.D.	Wall	O.D.	Wall		Bolts		Weld Sizes		A	B
															No./Splice	Dia.	W	W <sub>1</sub>		
3S0501080L081.2	897+75	I-A	5	25' 10"	4' 9 1/2"	1	6	30'	4' 9 1/2"	5"	5/16"	2 1/2"	5/16"	2 1/4"	6	7/8"	5/16"	1/4"	8 3/4"	11 3/4"

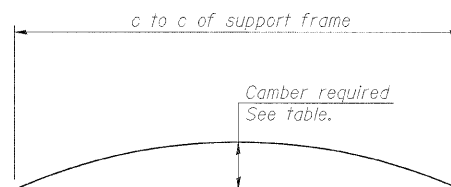


**SECTION B-B**

① Splicing Flanges shall be attached to each truss unit with the truss shop assembled to camber shown. Truss units shall be in proper alignment and flange surfaces shall be shop bolted into full contact before welding. Sufficient external welds or tacks shall be made to secure flanges until remaining welds are made after disassembly. Adjacent flanges shall be "match marked" to insure proper field assembly.



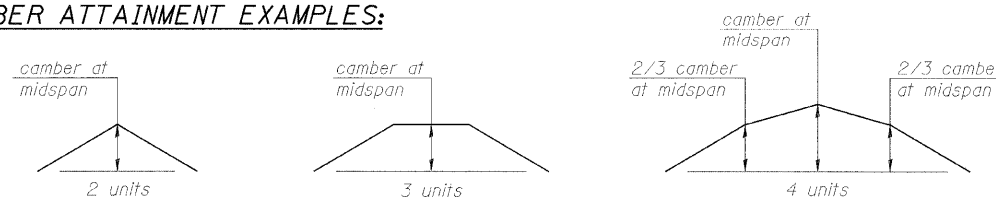
Note:  
Units shall be shipped individually with adequate provision to prevent detrimental motion during transport. This may require ropes between horizontals and diagonals or energy dissipating (elastic) ties to the vehicle. The Contractor is responsible for maintaining the configuration and protection of the units.



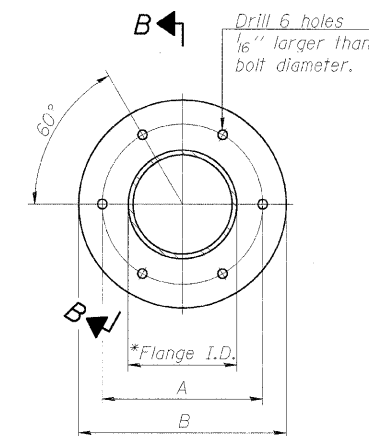
**CAMBER DIAGRAM**

Camber curve shown is theoretical. Actual camber attained by slope changes at splices between units.

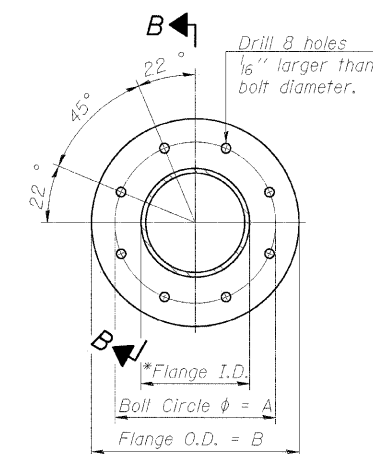
**CAMBER ATTAINMENT EXAMPLES:**



Camber shown is for fabrication only, measured with truss fully supported. (No-load condition)



**TRUSS TYPES I-A, II-A, & III-A**



**TRUSS TYPES II-A & III-A**

**SPLICING FLANGES**

ASTM B221, Alloy 6061-T6 or ASTM B209, Alloy 6061-T651

\*To fit O.D. of Chord with maximum gap of 1/16".

NUMBER	REVISION	DATE

MODEL NAME: 18 OS4-A-2  
 PLOT DATE: 12/23/2009  
 PLOT SCALE: 1"=10'-0"  
 USER NAME: Jahn400944

LAYOUT	MJC	02/08/06
DRAWN	MJC	02/08/06
REVIEWED	MLT	10/17/07

**OVERHEAD SIGN STRUCTURES  
 ALUMINUM TRUSS DETAILS  
 FOR TRUSS TYPES I-A, II-A AND III-A**

REVISIONS		ILLINOIS DEPARTMENT OF TRANSPORTATION
NAME	DATE	
SCALE: VERT. N.T.S.	DRAWN BY MJC	CHECKED BY MLT
DATE		

**SIGNING PLAN  
 OVERHEAD SIGN STRUCTURE**