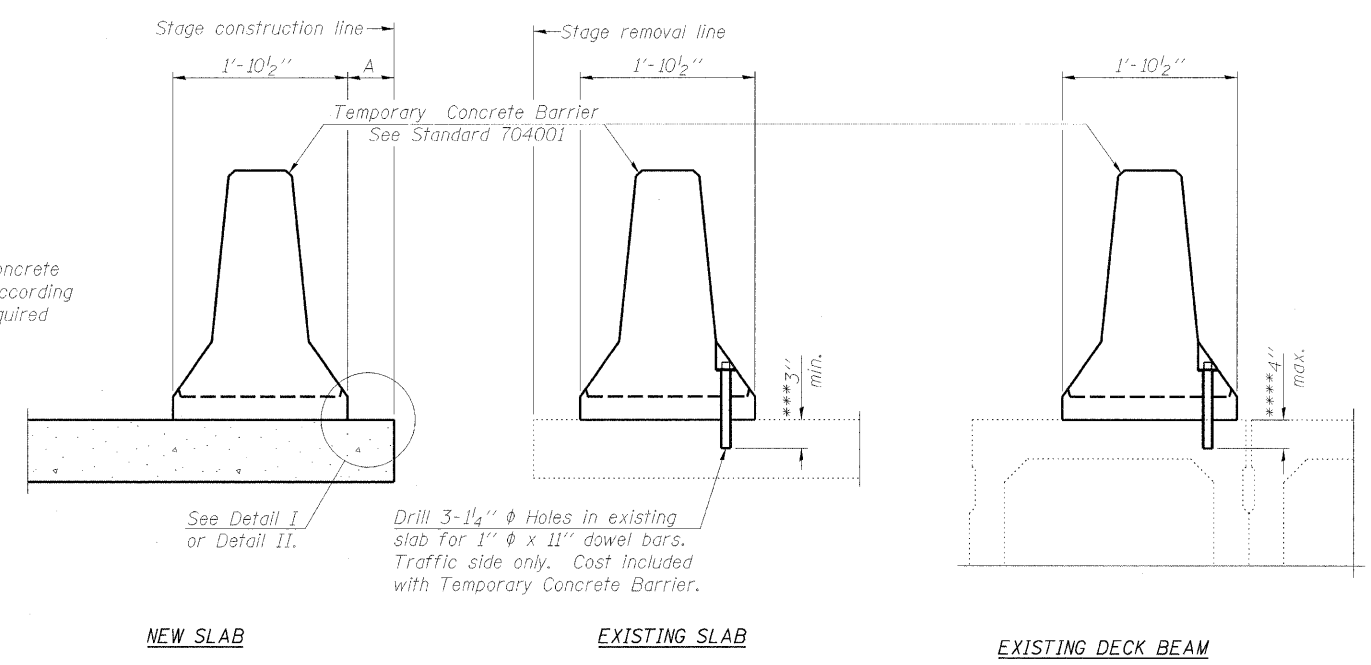


STATE OF ILLINOIS  
DEPARTMENT OF TRANSPORTATION

ROUTE NO.	SECTION	COUNTY	TOTAL SHEETS	SHEET NO.	SHEET NO. 5 22 SHEETS
F.A.U. Rte. 6120	*	LaSALLE	492	273	
FED. ROAD DIST. NO. 7		ILLINOIS	FED. AID PROJECT		

\*50-3HBK CONTRACT NO. 66542



When "A" is 3'-6" or less, the temporary concrete barrier shall be anchored to the new slab according to Detail I or Detail II. No anchorage is required when "A" is greater than 3'-6".

**NEW SLAB**                      **EXISTING SLAB**                      **EXISTING DECK BEAM**

**SECTIONS THRU SLAB OR DECK BEAM**

**NOTES**

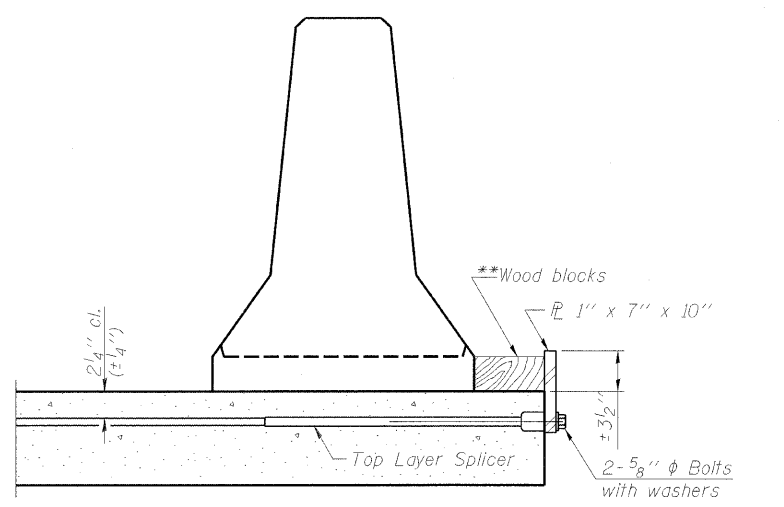
Detail I - With Bar Splicer or Couplers:  
Connect one (1) 1"x7"x10" steel  $\bar{L}$  to the top layer of couplers with 2-5/8"  $\phi$  bolts screwed to coupler at approximate  $\bar{C}$  of each barrier panel.

Detail II - With Extended Reinforcement Bars:  
Connect one (1) 1"x7"x10" steel  $\bar{L}$  to the concrete slab or concrete wearing surface with 2-5/8"  $\phi$  Expansion Anchors or cast in place inserts spaced between the top layer of reinforcement at approximate  $\bar{C}$  of each barrier panel.

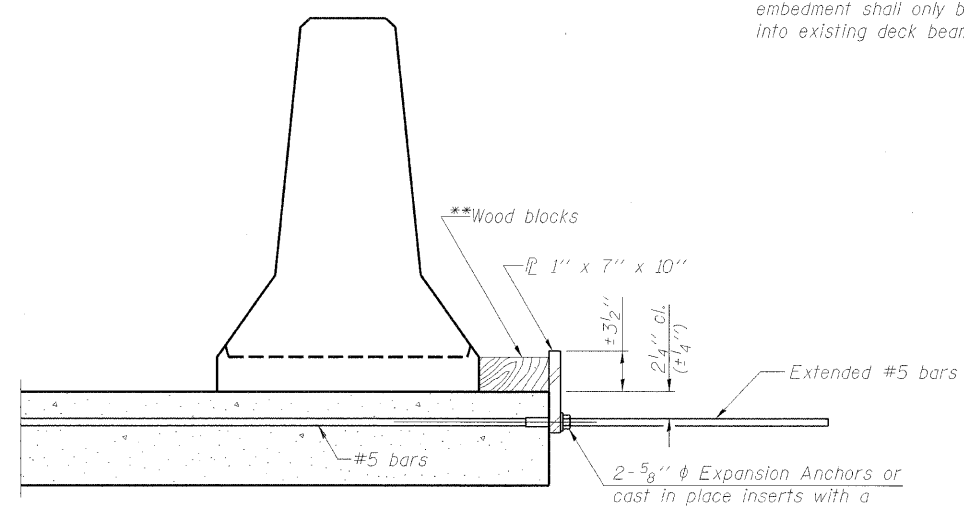
Cost of anchorage is included with Temporary Concrete Barrier. The 1" x 7" x 10" plate shall not be removed until stage II construction forms and all reinforcement bars are in place and the concrete is ready to be placed.

\*\*\* Dimension shown is minimum required embedment into concrete. If hot-mix asphalt wearing surface is present, minimum embedment shall be in addition to wearing surface depth.

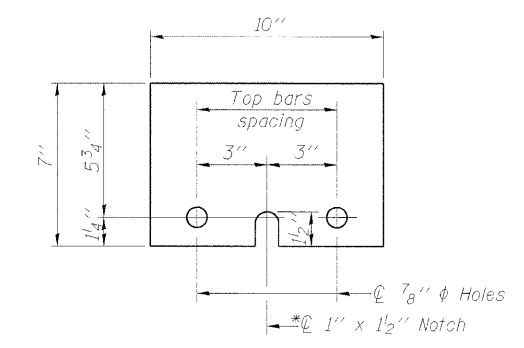
\*\*\*\* If existing deck beam is to remain in place after stage construction, embedment shall only be into wearing surface and not into existing deck beam concrete.



**DETAIL I**



**DETAIL II**



**STEEL RETAINER  $\bar{L}$  1" x 7" x 10"**  
\* Required only with Detail II

\*\*Wood blocks may be omitted when required to provide minimum stage traffic lane width. When the wood blocks are omitted, the concrete barrier shall be in direct contact with the steel retainer plate.

12/23/2009 CAPW\_E:\vornAS-01FF-001.dgn

LAYOUT	JMM	11/15/05
DRAWN	Roz	1/15/07
REVIEWED	JLT	1/15/07

TEMPORARY CONCRETE BARRIER  
UTICA ROAD (IL. RTE. 178) over F.A.I. ROUTE 80  
SECTION 50-3HBK  
LaSALLE COUNTY  
STATION 115+00.00  
STRUCTURE NO. 050-0248

© Copyright Hanson Professional Services Inc. 2009

**HANSON**

JOB NO. 05S2015  
DATE 10/12/09