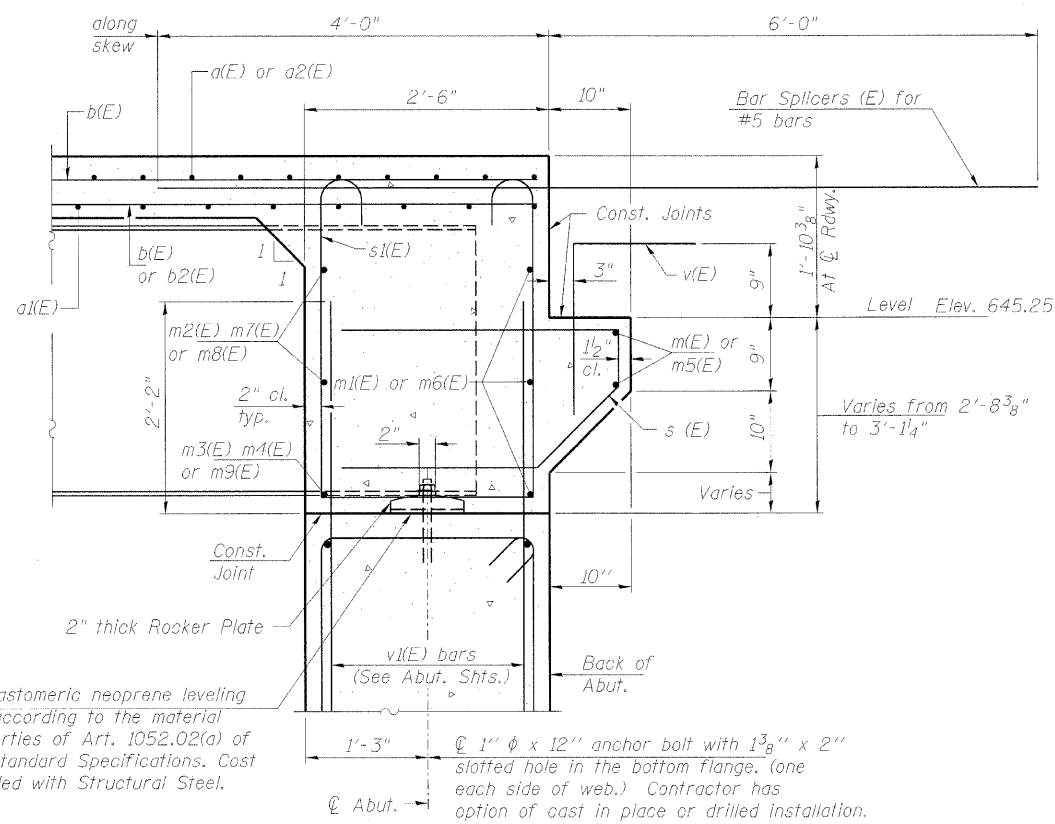


DIAPHRAGM ELEVATION AT ABUTMENT
(Looking Upstation)



Notes:
Reinforcement bars in diaphragm are billed with superstructure on sheet 11 of 22.
Concrete in diaphragm is included with Concrete Superstructure on sheet 11 of 22.
The s(E) and sl(E) bars shall be placed parallel to the beams. Spacing for these bars shall be at right angles to the beams.
Bars indicated thus 2x3-#6 etc. indicates 2 lines of bars with 3 lengths per line.
See Sheet 20 of 22 for Bar Splicer Details.

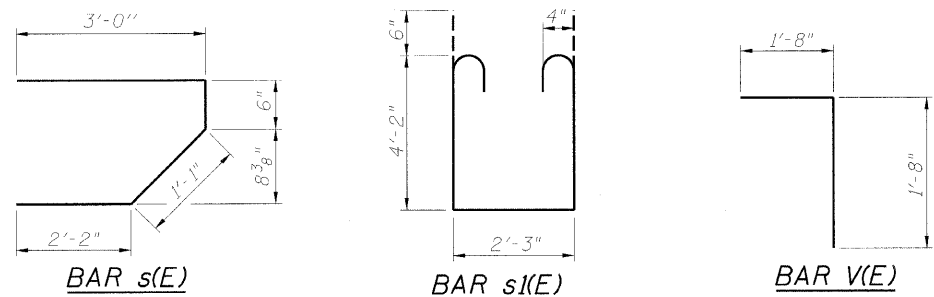
MIN. BAR LAP
#6 bar = 2'-7"

END DIAPHRAGM DETAILS
UTICA ROAD (IL. RTE. 178) over F.A.I. ROUTE 80
SECTION 50-3HBK
LaSALLE COUNTY
STATION 115+00.00
STRUCTURE NO. 050-0248

© Copyright Hanson Professional Services Inc. 2009



JOB NO.
05S2015
DATE
10/12/09



1/8" elastomeric neoprene leveling pad according to the material properties of Art. 1052.02(a) of the Standard Specifications. Cost included with Structural Steel.

SECTION A-A

Dimensions at right angles to abutment, except as shown.

12/23/2009
C:\PW_Export\AS-10\FP-001.dgn

LAYOUT	MMW	11/16/05
DRAWN	Rod	1/15/07
REVIEWED	JUT	1/15/07