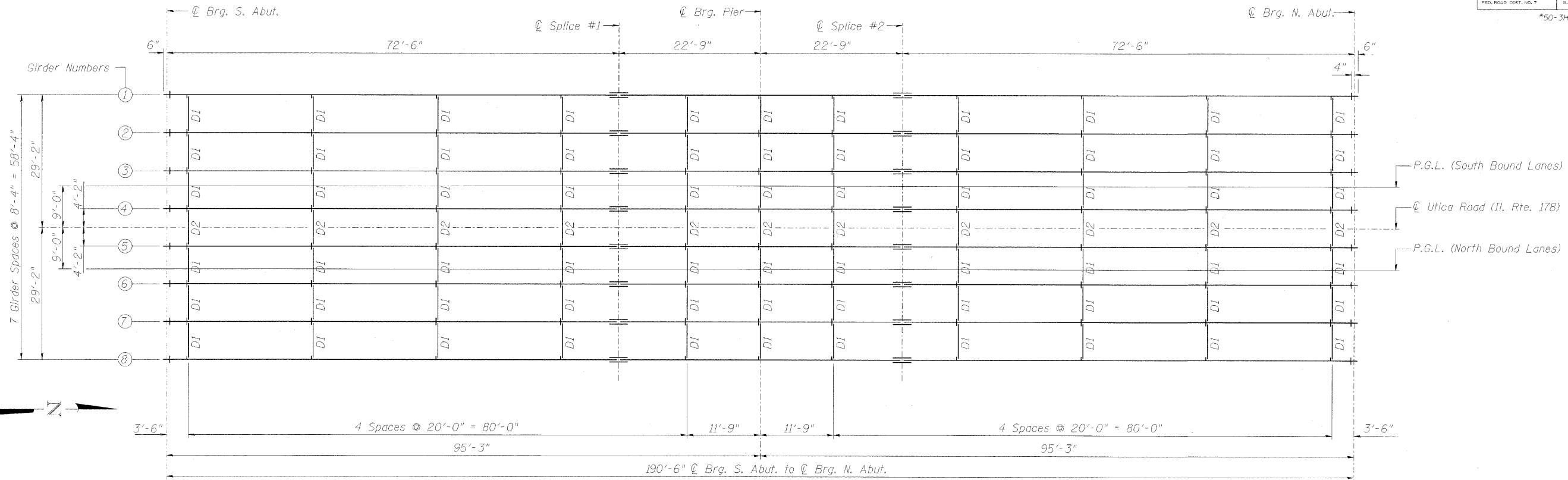


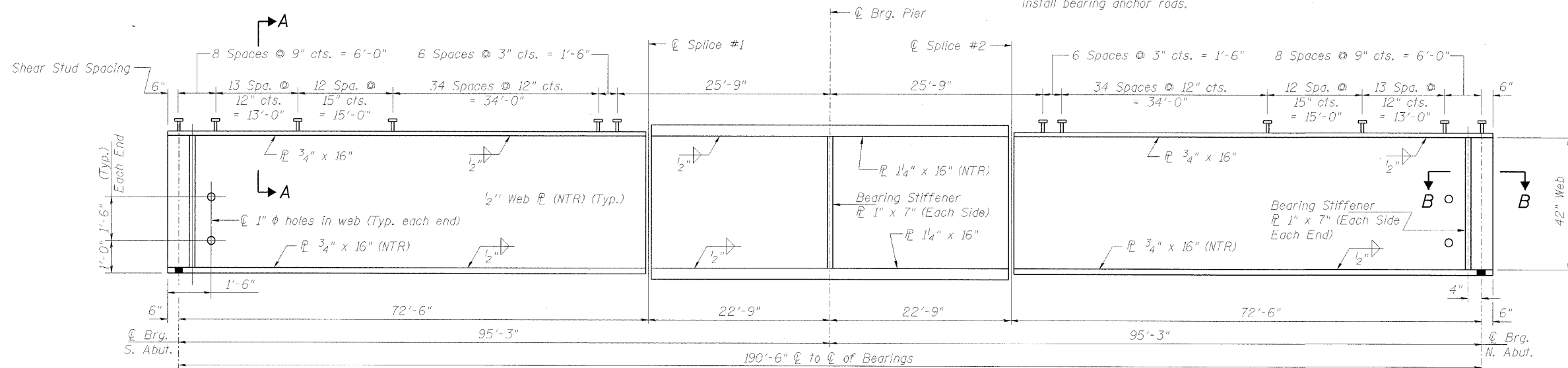
STATE OF ILLINOIS
DEPARTMENT OF TRANSPORTATION

ROUTE NO.	SECTION	COUNTY	SHEETS	SHEET NO.	SHEET NO. 13 22 SHEETS
F.A.U. Rte. 6120	#	LaSALLE	492	281	
FED. ROAD DIST. NO. 7		ILL. PROJ. NO.	FED. AID PROJECT NO.		
*50-3HBK					
					CONTRACT NO. 66542



FRAMING PLAN

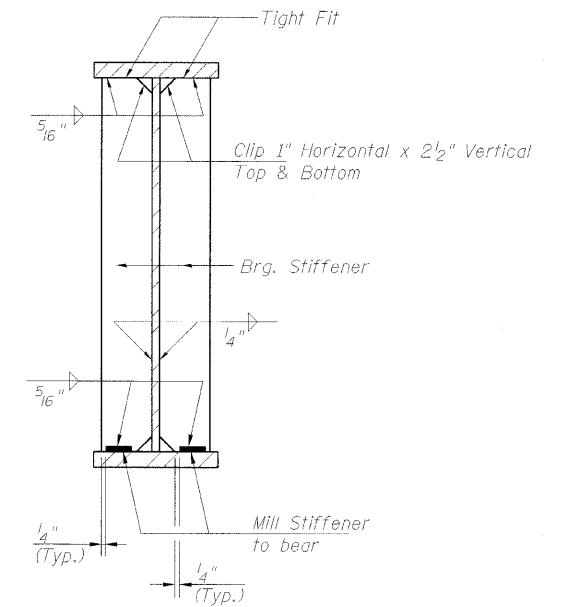
Note:
All diaphragms shall be installed as steel is erected and secured with erection pins and bolts except as otherwise noted. Individual diaphragms at supports may be temporarily disconnected to install bearing anchor rods.



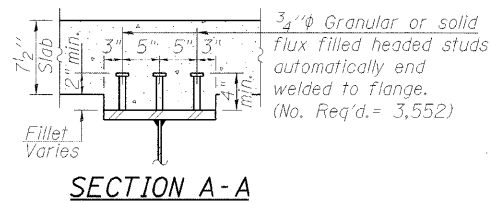
GIRDER ELEVATION

Note:
All flanges, webs, bearing stiffeners, splice plates and structural steel plates of the Bearing Assembly shall conform to the requirements of AASHTO M270, Grade 50.
Fill plates, Diaphragms, and diaphragm connecting plates shall conform to the requirements of AASHTO M270, Grade 36.

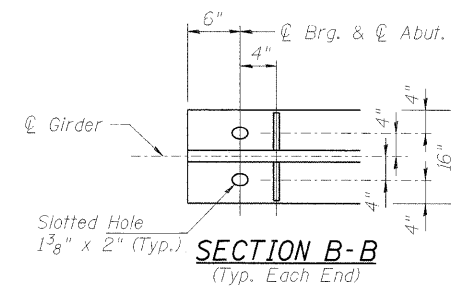
Load carrying components designated "NTR" shall conform to the Supplemental Requirements for Notch Toughness, Zone 2.
For diaphragm details and splice plate details see sheet 14 of 22.



BEARING STIFFENER DETAIL



SECTION A-A



SECTION B-B
(Typ. Each End)

STRUCTURAL STEEL
UTICA ROAD (IL. RTE. 178) over F.A.I. ROUTE 80
SECTION 50-3HBK
LaSALLE COUNTY
STATION 115+00.00
STRUCTURE NO. 050-0248

© Copyright Hanson Professional Services Inc. 2009



05S2015

DATE
10/12/09

12/23/2009
C:\PW_Export\AS-01\F-001.dgn
LAYOUT
DRAWN
REVIEWED
11/16/05
1/15/07
1/15/07