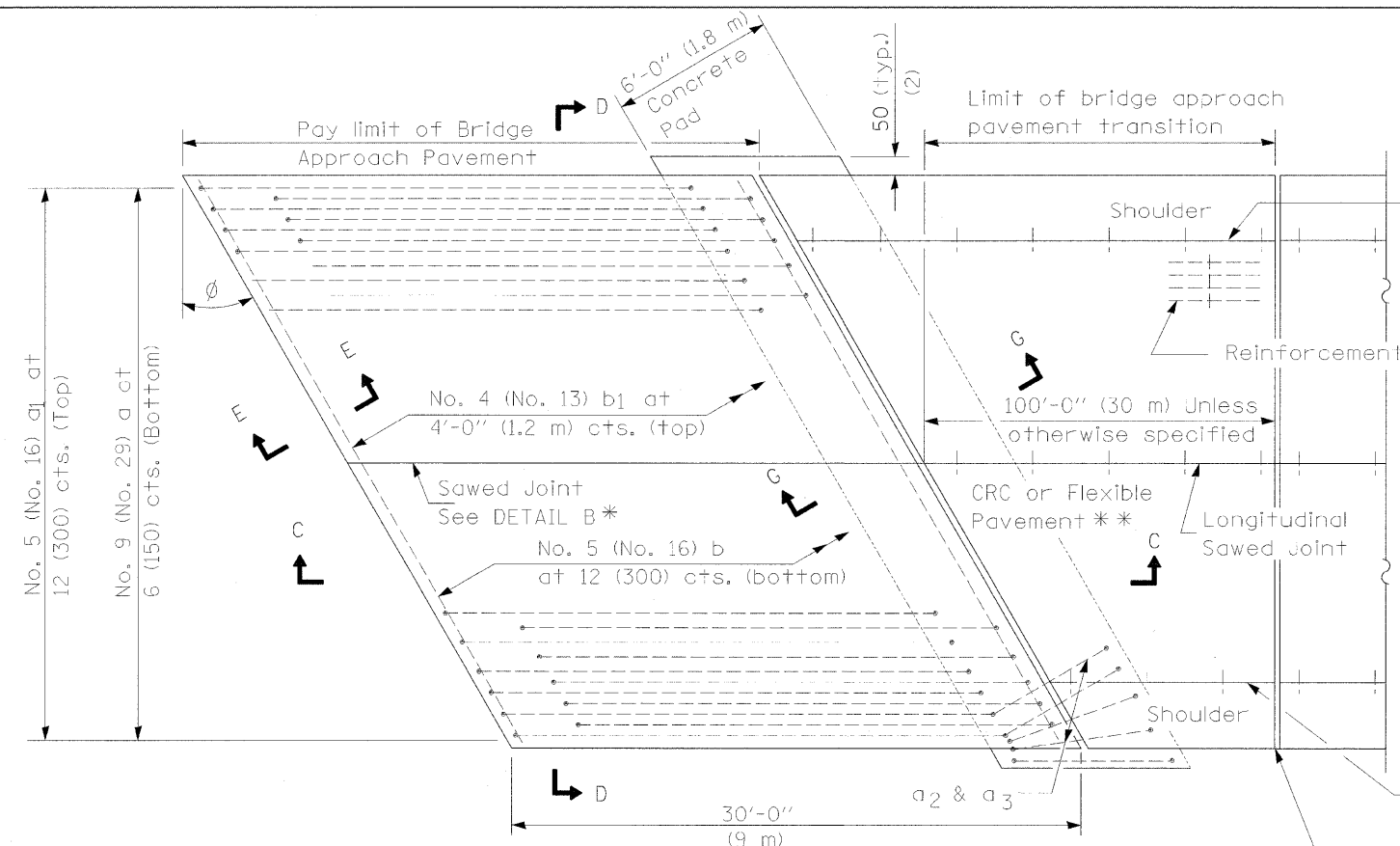
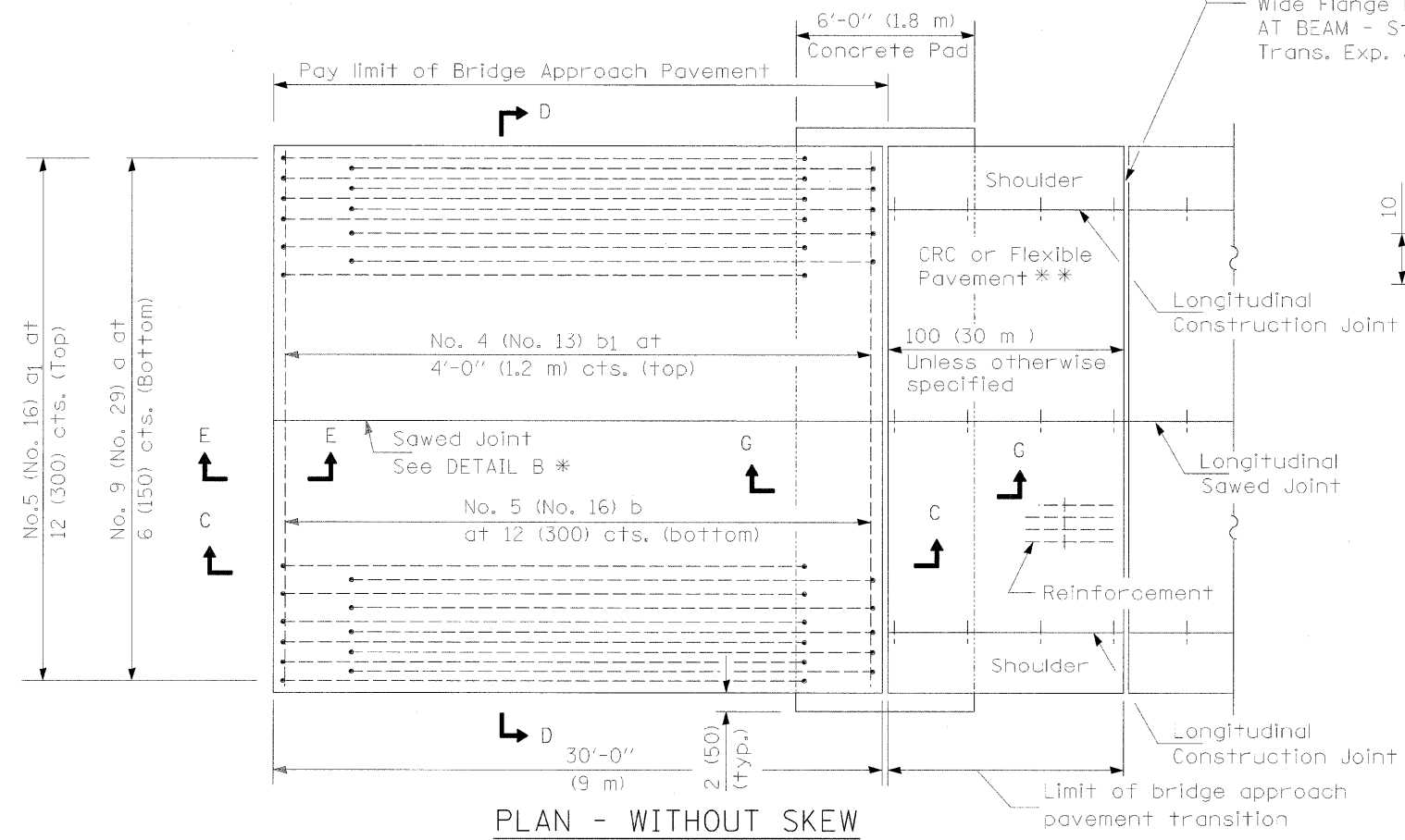


| F.A.I. RTE. | SECTION | COUNTY | TOTAL SHEETS | SHEET NO. |
|---------------------|-----------|---------------------------|--------------|-----------|
| 80 | (50-3)HBK | LASALLE | 492 | 321 |
| STA. | | TO STA. | | |
| FED. ROAD DIST. NO. | | ILLINOIS FED. AID PROJECT | | |

NEW CONSTRUCTION

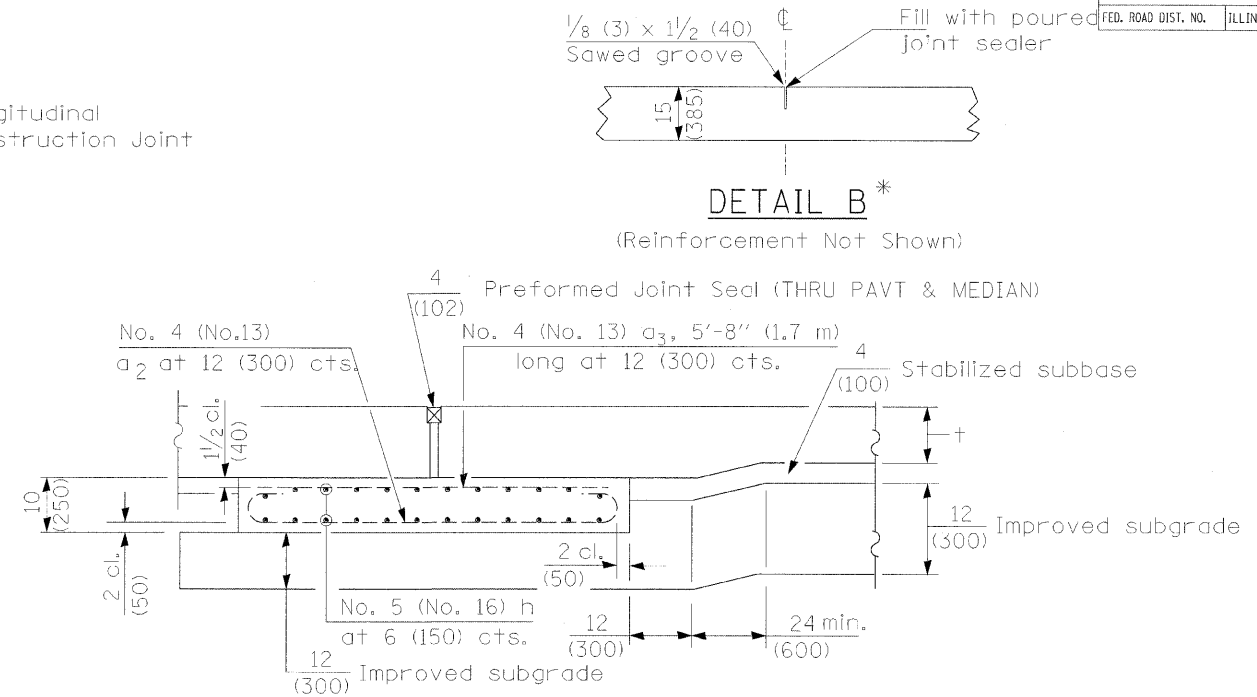


PLAN - WITH SKEW

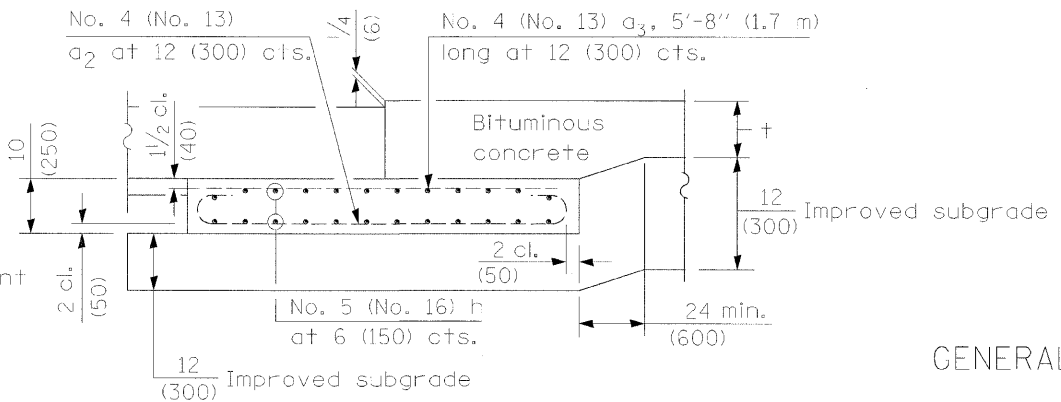


PLAN - WITHOUT SKEW

Rigid Pavement only:
 Wide Flange Beam Terminal Joint (See DETAIL AT BEAM - Standard 421101 or 421106) or 2 (50) Trans. Exp. Joint as detailed on Standard 420001.



SECTION G-G - RIGID PAVEMENT



SECTION G-G - FLEXIBLE PAVEMENT

GENERAL NOTES

- THICKNESS-"I"=Thickness of Pavement.
- See Standard 421001 for reinforcement details not shown.
- See Standard 420001 for joint details not shown.
- All dimensions are in inches (millimeters) unless otherwise shown.

| REVISIONS | |
|-----------|------|
| NAME | DATE |
| | |
| | |
| | |
| | |
| | |
| | |
| | |
| | |
| | |

ILLINOIS DEPARTMENT OF TRANSPORTATION
**BRIDGE APPROACH PAVEMENT
 DETAILS**
 SHEET 1 OF 4
 SCALE: VERT. DATE
 HORIZ. DRAWN BY
 CHECKED BY

HANSON
 Hanson Professional Services Inc.
 1525 South Sixth Street
 Springfield, Illinois 62703-2886
 Offices Nationwide

| | |
|------------|-----------------|
| LAYOUT | 01/13/06 |
| DRAWN | 01/13/06 |
| REVIEWED | 10/1/07 |
| MODEL NAME | AP Detail Sht 1 |
| PLOT DATE | 12/23/2009 |
| PLOT SCALE | 1/8"=1'-0" |
| USER NAME | Johna00944 |

* Saw ϕ or lane edge if poured two or more lane widths at a time.
 ** Omit Reinforcement, tie bars and Long. sawed Jt. for Flexible Pavement.