

STATE OF ILLINOIS
DEPARTMENT OF TRANSPORTATION

ROUTE NO.	SECTION	COUNTY	TOTAL SHEETS	SHEET NO.	SHEET NO. 2 OF 23 SHEETS
S. B. L. F. A.	(3)BR-1	LASALLE	44	12	
FED. ROAD DIST. NO. 7	ILLINOIS	FED. AID PROJECT	CONTRACT NO. 66619		

TOTAL BILL OF MATERIAL

ITEM	UNIT	SUPER	SUB	TOTAL
Porous Granular Embankment (Special)	Cu. Yd.		126	126
Structure Excavation	Cu. Yd.		330	330
Concrete Structures	Cu. Yd.		89.4	89.4
Concrete Superstructure	Cu. Yd.	153.5		153.5
Protective Coat	Sq. Yd.	553		553
Furnishing and Erecting Structural Steel	L. Sum	1		1
Bridge Deck Grooving	Sq. Yd.	456		456
Reinforcement Bars, Epoxy Coated	Pound	36240	8800	45040
Furnishing Metal Shell Piles 12" x 0.250"	Foot		1282	1282
Driving Piles	Foot		1282	1282
Test Pile Metal Shells	Each		2	2
Floor Drains	Each	12		12
Name Plates	Each	1		1
Anchor Bolts, 1"	Each	48		48
Stone Riprap, Class A4	Sq. Yd.		702	702
Filter Fabric	Sq. Yd.		702	702
Removal of Existing Structures	Each	1		1
Temporary Soil Retention System	Sq. Ft.	319		319
Stud Shear Connectors	Each	2052		2052
Bar Splicers	Each	452	60	512
Geocomposite Wall Drain	Sq. Yd.		66	66
Pipe Underdrain for Structures, 4"	Foot		182	182
Underwater Structure Excavation Protection, Location 1	Each		1	1
Underwater Structure Excavation Protection, Location 2	Each		1	1
Concrete Encasement	Cu. Yd.		6.6	6.6

GENERAL NOTES

Fasteners shall be AASHTO M164 Type 1, mechanically galvanized bolts in painted areas and M164 Type 3 in unpainted areas. Bolts $\frac{7}{8}$ in. ϕ , holes $\frac{5}{16}$ in. ϕ , unless otherwise noted.

Calculated weight of Structural Steel = 55,730 lbs. (M270 Grade 50W)

All structural steel shall be AASHTO M 270 Grade 50W.

No field welding is permitted except as specified in the contract documents.

Reinforcement bars shall conform to the requirements of ASTM A 706 Gr 60 (IL Modified). See Special Provisions

Reinforcement bars designated (E) shall be epoxy coated.

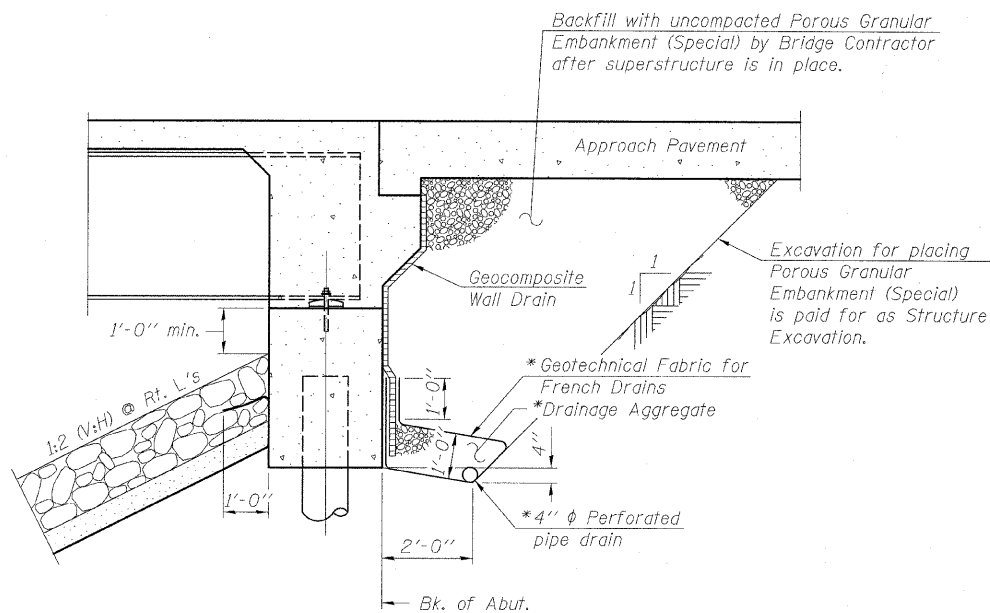
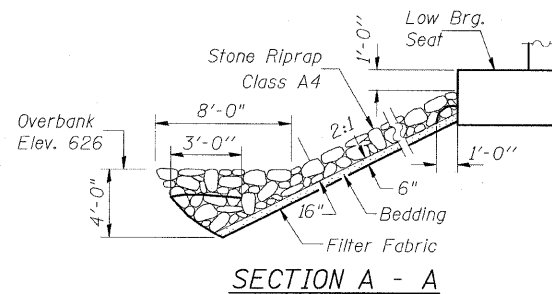
Bearing seat surfaces shall be constructed or adjusted to their designated elevations within a tolerance of $\frac{1}{8}$ inch (0.01 ft.). Adjustment shall be made either by grinding the surface or by shimming the bearings.

Structural steel shall only be painted for a distance equal to the depth of embedment into the concrete cap plus 3 inches. Those areas shall be primed in the shop with a Department approved zinc rich primer. No field painting shall be required. All structural steel shall be cleaned as specified in the Special Provision for "Surface Preparation and Painting Requirements for Weathering Steel".

Layout of slope protection system may be varied in the field to suit ground conditions as directed by the Engineer.

The Contractor shall drive test piles to 110% of the nominal required bearing specified in production locations at substructures specified or approved by the Engineer before ordering the remainder of piles.

Slipforming of the parapets is not allowed.



SECTION THRU INTEGRAL ABUTMENT
(Horiz. dim. @ Rt. L's)

* Included in the cost of Pipe Underdrains for Structures.

Note:
All drainage system components shall extend to 2'-0" from the end of each wingwall except an outlet pipe shall extend until intersecting with the side slopes. The pipes shall drain into concrete headwalls. (See Article 601.05 of the Standard Specifications and Highway Standard 601101).

GENERAL NOTES & BILL OF MATERIAL
US ROUTE 52 AND IL ROUTE 23 OVER
CROOKED LEG CREEK
F.A.P. ROUTE 68 SECTION (3) BR-1
LASALLE COUNTY
STATION 419+80.00
STRUCTURE NUMBER 050-0240