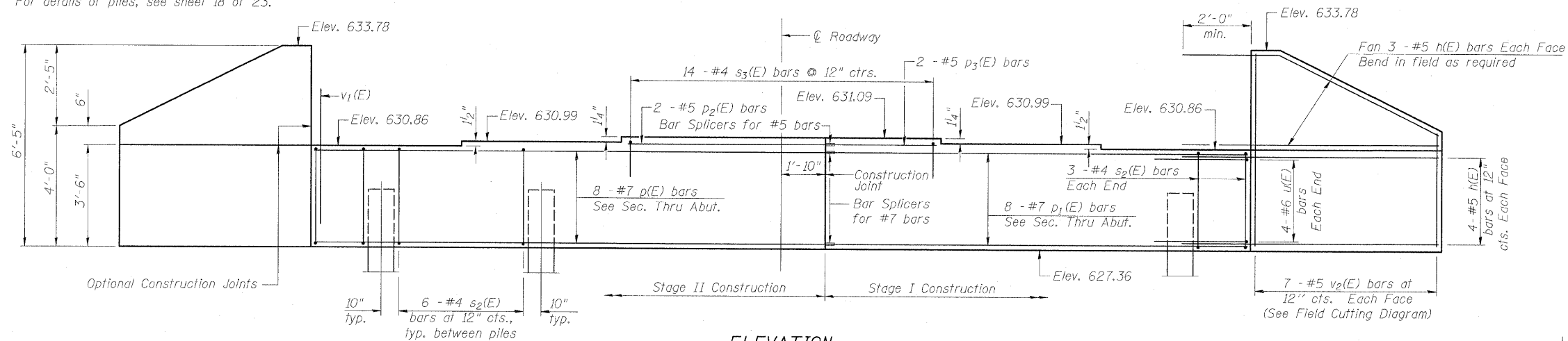


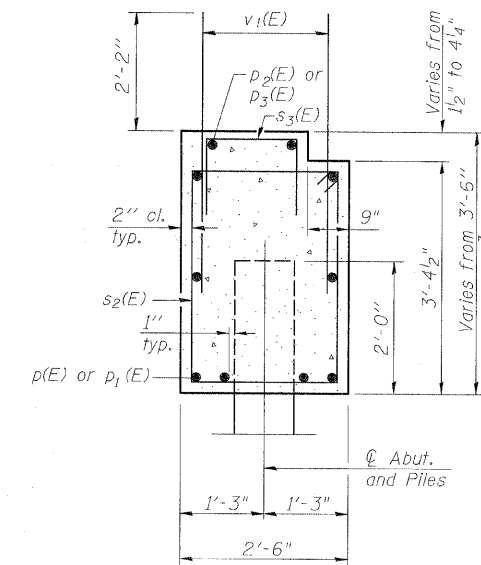
STATE OF ILLINOIS
DEPARTMENT OF TRANSPORTATION

ROUTE NO.	SECTION	COUNTY	TOTAL SHEETS	SHEET NO.	SHEET NO. 14
S.S.L. P.L.A.	(3)BR-1	LASALLE	44	24	OF 23 SHEETS
FED. ROAD DIST. NO. 7	ILLINOIS	FED. AID PROJECT-			

Notes:
Space reinforcement in cap to miss anchor bolts.
Pour steps monolithically with cap.
For details of piles, see sheet 18 of 23.

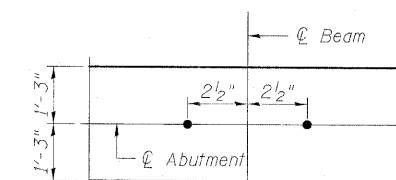


ELEVATION
(Looking West)

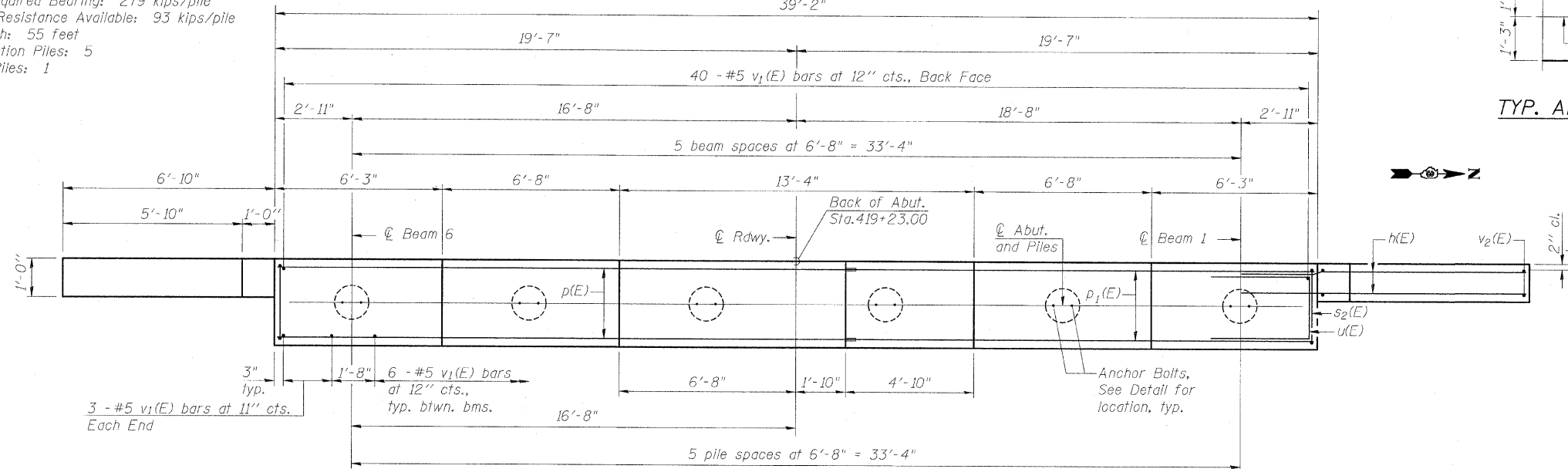


SEC. THRU ABUT.

PILE DATA
Type: 12" Metal Shell w/ 0.25" walls
Nominal Required Bearing: 279 kips/pile
Allowable Resistance Available: 93 kips/pile
Est. Length: 55 feet
No. Production Piles: 5
No. Test Piles: 1

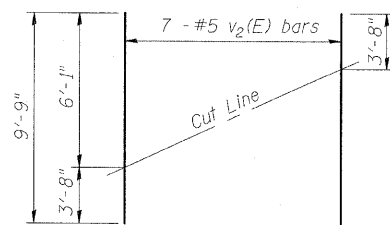


TYP. ANCHOR BOLT LOCATION



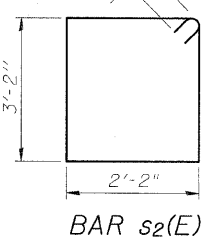
PLAN

Excavation behind existing abutment walls shall be performed to balance front and back soil pressure before removing the existing superstructure. The Contractor shall sawcut the upper portion of the existing abutment at the stage removal line before Stage I removal to ensure the remaining portion will not be prematurely damaged.

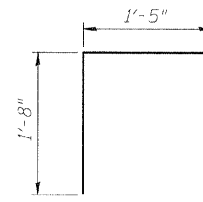


FIELD CUTTING DIAGRAM

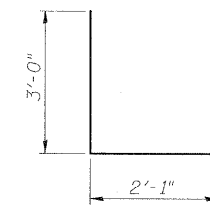
Order v2(E) full length. Cut as shown and use remainder of bars in opposite face.



BAR s2(E)



BAR s3(E)



BAR u(E)

BILL OF MATERIAL

Bar	No.	Size	Length	Shape
h(E)	28	#5	9'-0"	—
p(E)	8	#7	21'-3"	—
p1(E)	8	#7	17'-7"	—
p2(E)	2	#5	8'-4"	—
p3(E)	2	#5	4'-8"	—
s2(E)	36	#4	11'-5"	□
s3(E)	14	#4	4'-9"	□
u(E)	8	#7	8'-1"	—
v1(E)	76	#5	4'-4"	—
v2(E)	14	#5	9'-9"	—
Concrete Structures		Cu. Yd.	15.6	
Reinforcement Bars, Epoxy Coated		Pound	1060	
Structure Excavation		Cu. Yd.	115	
Furnishing Metal Shell Piles 12" x 0.250"		Foot	275	
Driving Piles		Foot	275	
Test Pile Metal Shells		Each	1	

WEST ABUTMENT DETAILS
US ROUTE 52 AND IL ROUTE 23 OVER
CROOKED LEG CREEK
F.A.P. ROUTE 68 SECTION (3) BR-1
LASALLE COUNTY
STATION 419+80.00
STRUCTURE NUMBER 050-0240