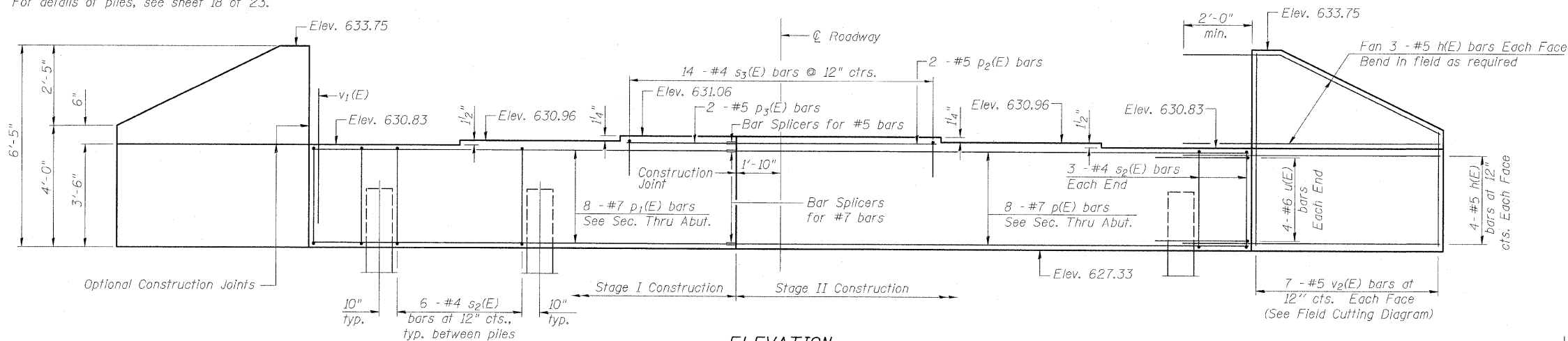


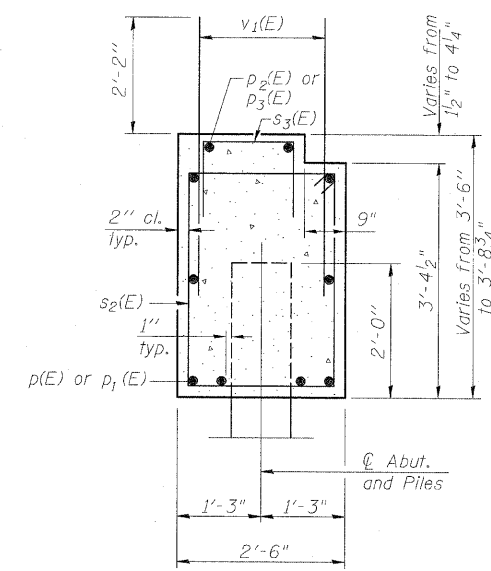
STATE OF ILLINOIS  
DEPARTMENT OF TRANSPORTATION

ROUTE NO.	SECTION	COUNTY	TOTAL SHEETS	SHEET NO.	SHEET NO. 15 OF 23 SHEETS
U.S. I. F.A.	(3)BR-1	LASALLE	44	25	
FED. ROAD DIST. NO. 7	ILLINOIS	FED. AID PROJECT	CONTRACT NO. 66619		

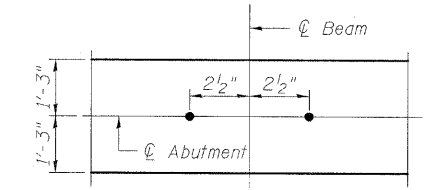
Notes:  
Space reinforcement in cap to miss anchor bolts.  
Pour steps monolithically with cap.  
For details of piles, see sheet 18 of 23.



**ELEVATION**  
(Looking East)



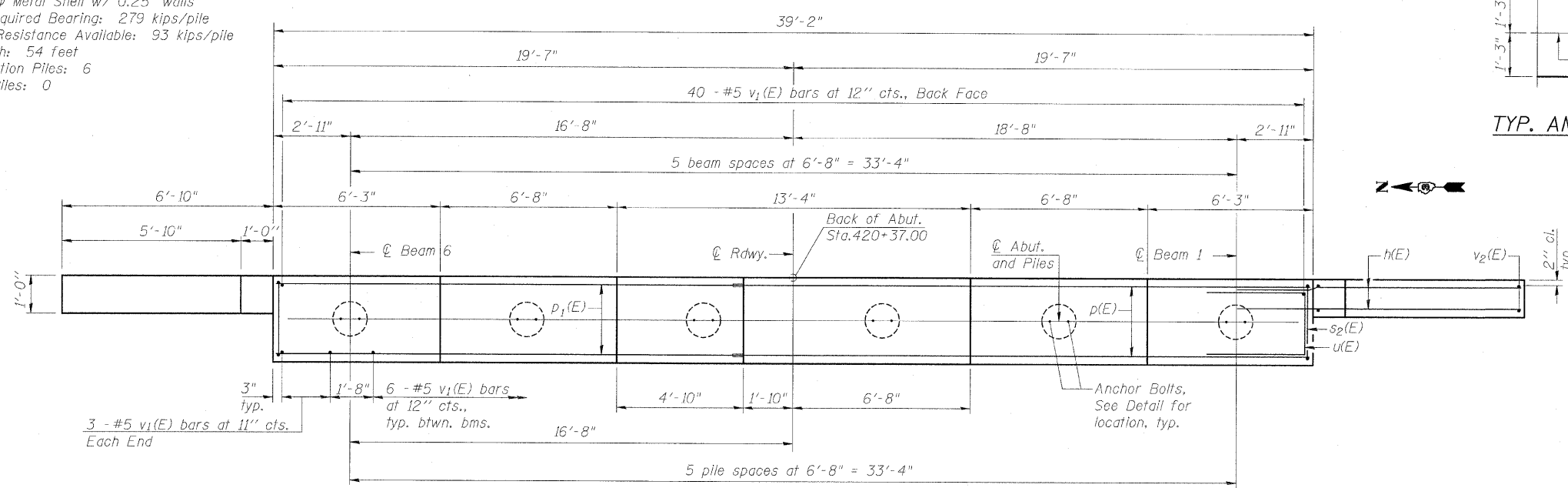
**SEC. THRU ABUT.**



**TYP. ANCHOR BOLT LOCATION**

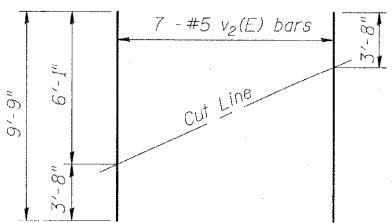
**PILE DATA**

Type: 12" Metal Shell w/ 0.25" walls  
Nominal Required Bearing: 279 kips/pile  
Allowable Resistance Available: 93 kips/pile  
Est. Length: 54 feet  
No. Production Piles: 6  
No. Test Piles: 0



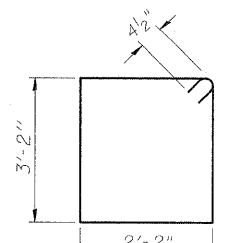
**PLAN**

Excavation behind existing abutment walls shall be performed to balance front and back soil pressure before removing the existing superstructure. The Contractor shall sawcut the upper portion of the existing abutment at the stage removal line before Stage I removal to ensure the remaining portion will not be prematurely damaged.

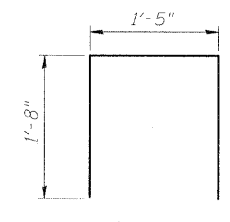


**FIELD CUTTING DIAGRAM**

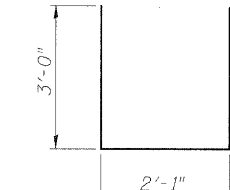
Order v2(E) full length. Cut as shown and use remainder of bars in opposite face.



**BAR s2(E)**



**BAR s3(E)**



**BAR u(E)**

**BILL OF MATERIAL**

Bar	No.	Size	Length	Shape
h(E)	28	#5	9'-0"	—
p(E)	8	#7	21'-3"	—
p1(E)	8	#7	17'-7"	—
p2(E)	2	#5	8'-4"	—
p3(E)	2	#5	4'-8"	—
s2(E)	36	#4	11'-5"	□
s3(E)	14	#4	4'-9"	□
u(E)	8	#7	8'-1"	—
v1(E)	76	#5	4'-4"	—
v2(E)	14	#5	9'-9"	—
Concrete Structures		Cu. Yd.	15.6	
Reinforcement Bars, Epoxy Coated		Pound	1860	
Structure Excavation		Cu. Yd.	115	
Furnishing Metal Shell Piles 12" x 0.250"		Foot	324	
Driving Piles		Foot	324	

**EAST ABUTMENT DETAILS**  
US ROUTE 52 AND IL ROUTE 23 OVER  
CROOKED LEG CREEK  
F.A.P. ROUTE 68 SECTION (3) BR-1  
LASALLE COUNTY  
STATION 419+80.00  
STRUCTURE NUMBER 050-0240