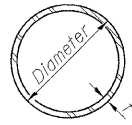


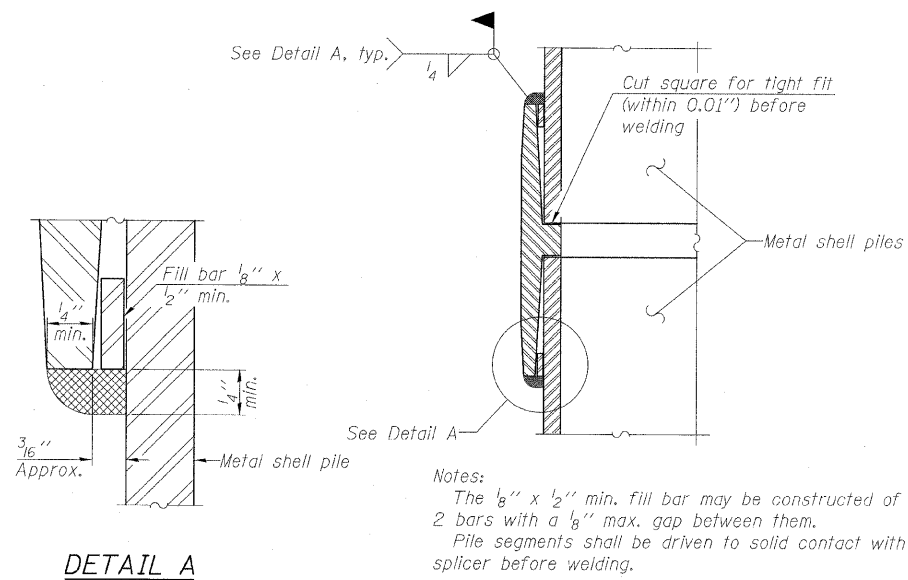
STATE OF ILLINOIS  
DEPARTMENT OF TRANSPORTATION

ROUTE NO.	SECTION	COUNTY	TOTAL SHEETS	SHEET NO.	SHEET NO. 18 OF 23 SHEETS
S.B.L. F.A.	(3)BR-1	LASALLE	44	28	
FED. ROAD DIST. NO. 7	ILLINOIS	FED. AID PROJECT	CONTRACT NO. 66619		



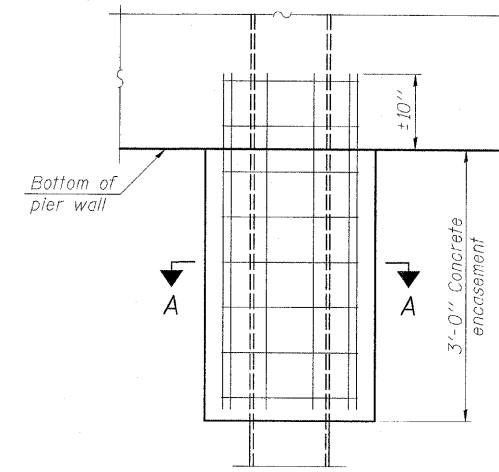
METAL SHELL PILE TABLE

Designation and outside diameter	Wall thickness t	Weight per foot (Lbs./ft.)	Inside volume (yd. <sup>3</sup> /ft.)
PP12	0.170"	22.60	0.0274
PP12	0.250"	31.37	0.0267
PP14	0.250"	36.71	0.0360
PP14	0.312"	45.61	0.0361

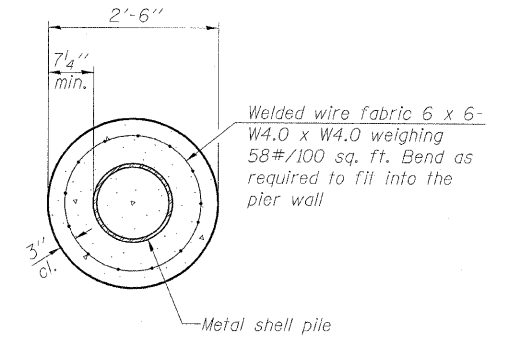


Notes:  
The  $\frac{1}{8}$ " x  $\frac{1}{2}$ " min. fill bar may be constructed of 2 bars with a  $\frac{1}{8}$ " max. gap between them.  
Pile segments shall be driven to solid contact with splicer before welding.

WELDED COMMERCIAL SPLICE



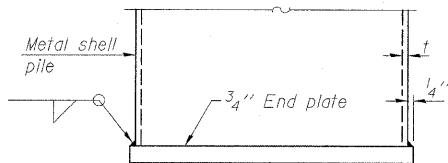
ELEVATION



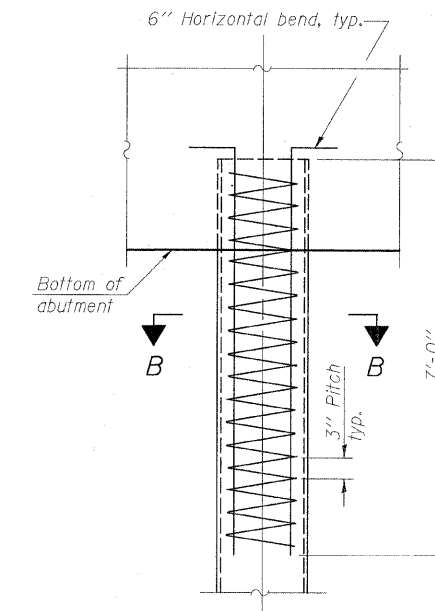
SECTION A-A

Note:  
Forms for encasement may be omitted when soil conditions permit.

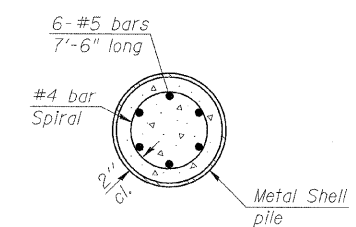
CONCRETE ENCASEMENT AT PIERS



END PLATE ATTACHMENT

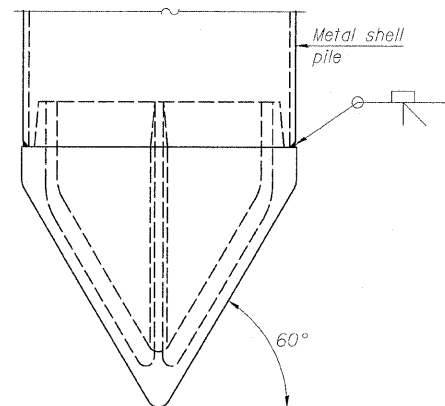


ELEVATION



SECTION B-B

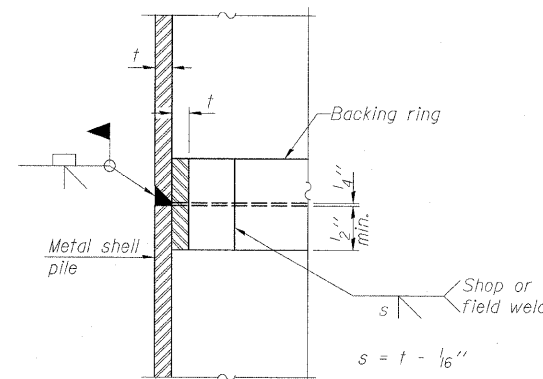
METAL SHELL REINFORCEMENT AT ABUTMENTS



METAL SHELL PILE SHOE ATTACHMENT

(See Note A)

Note A:  
When called for on the plans, the Contractor shall furnish metal shell pile shoes consisting of a single piece conical pile point as shown. The pile shoes shall be cast in one piece steel according to either ASTM A 148 Grade 90-60 or AASHTO M 103 Grade 65-35 and shall provide full bearing over the full circumference of the metal shell pile. The pile shoe shall have tapered leads to assure proper alignment and fitting and shall be secured to the pile with a circumferential weld.



COMPLETE PENETRATION WELD SPLICE

Backing ring made from pile shell. Remove segment to allow reducing circumference and vertically rejoin with partial joint penetration weld.

Note:  
The metal shell piles shall be according to ASTM A 252 Grade 3.

METAL SHELL PILE DETAILS  
US ROUTE 52 AND IL ROUTE 23 OVER  
CROOKED LEG CREEK  
F.A.P. ROUTE 68 SECTION (3) BR-1  
LASALLE COUNTY  
STATION 419+80.00  
STRUCTURE NUMBER 050-0240