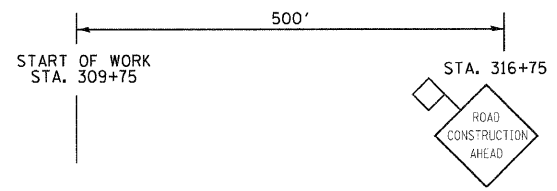
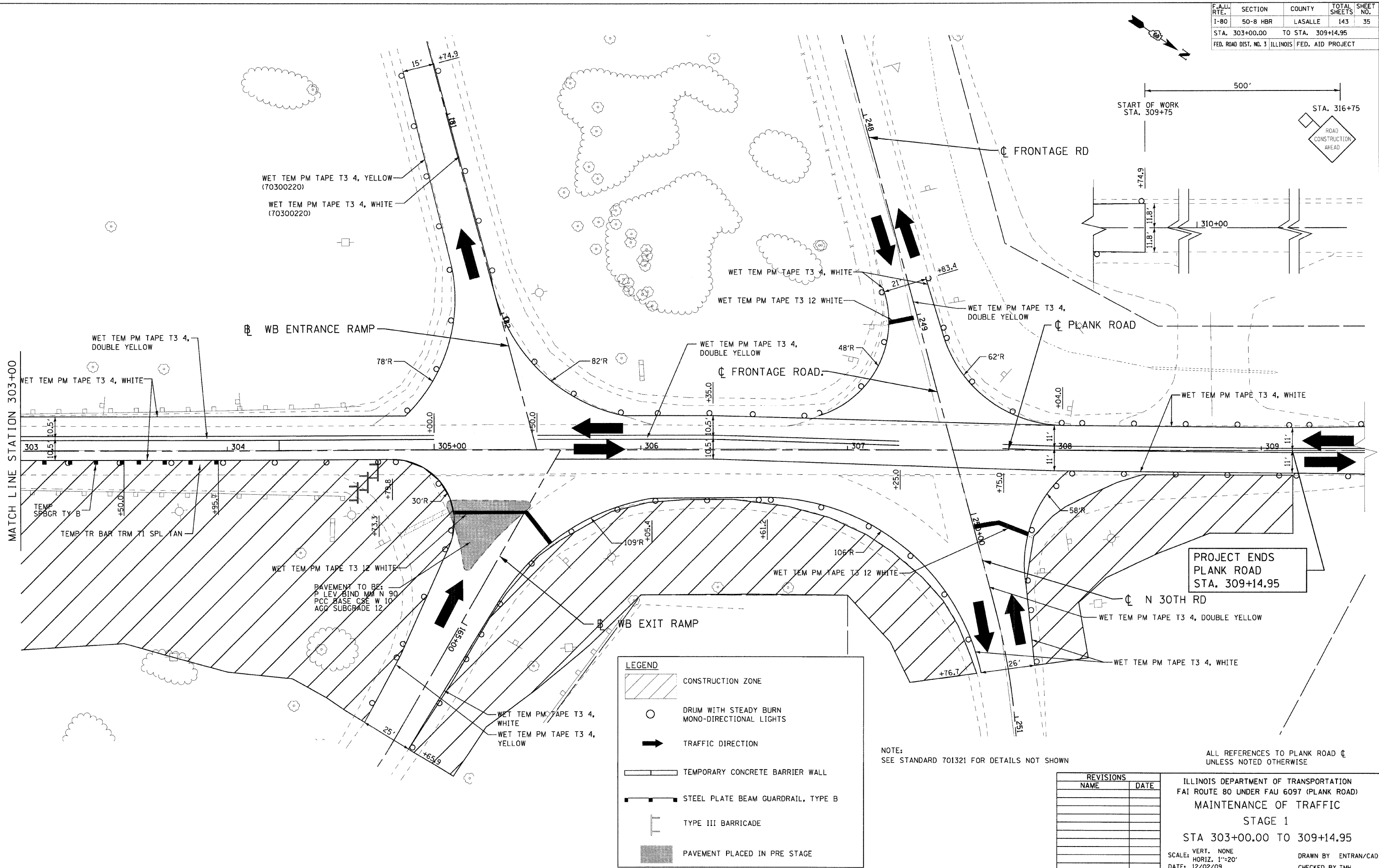
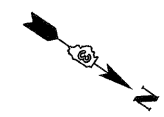


| F.A.U. RTE. | SECTION | COUNTY | TOTAL SHEETS | SHEET NO. |
|---|----------|-------------------|--------------|-----------|
| I-80 | 50-8 HBR | LASALLE | 143 | 35 |
| STA. 303+00.00 | | TO STA. 309+14.95 | | |
| FED. ROAD DIST. NO. 3 ILLINOIS FED. AID PROJECT | | | | |



PROJECT ENDS
PLANK ROAD
STA. 309+14.95

LEGEND

- CONSTRUCTION ZONE
- DRUM WITH STEADY BURN MONO-DIRECTIONAL LIGHTS
- TRAFFIC DIRECTION
- TEMPORARY CONCRETE BARRIER WALL
- STEEL PLATE BEAM GUARDRAIL, TYPE B
- TYPE III BARRICADE
- PAVEMENT PLACED IN PRE STAGE

NOTE:
SEE STANDARD 701321 FOR DETAILS NOT SHOWN

ALL REFERENCES TO PLANK ROAD ϕ
UNLESS NOTED OTHERWISE

| REVISIONS | |
|-----------|------|
| NAME | DATE |
| | |
| | |
| | |
| | |
| | |
| | |
| | |
| | |
| | |
| | |

ILLINOIS DEPARTMENT OF TRANSPORTATION
FAI ROUTE 80 UNDER FAU 6097 (PLANK ROAD)
MAINTENANCE OF TRAFFIC
STAGE 1
STA 303+00.00 TO 309+14.95
SCALE: VERT. NONE
HORIZ. 1"=20'
DATE: 12/02/09
DRAWN BY ENTRAN/CAD
CHECKED BY TMH

PLOT DATE = 2/14/2010
FILE NAME = G:\proj\66645\20054089_000\cadd\PLM\11_83.dwg
PLOT SCALE = 20,000% / IN.
PLOT TIME = 4:00:146 PM

