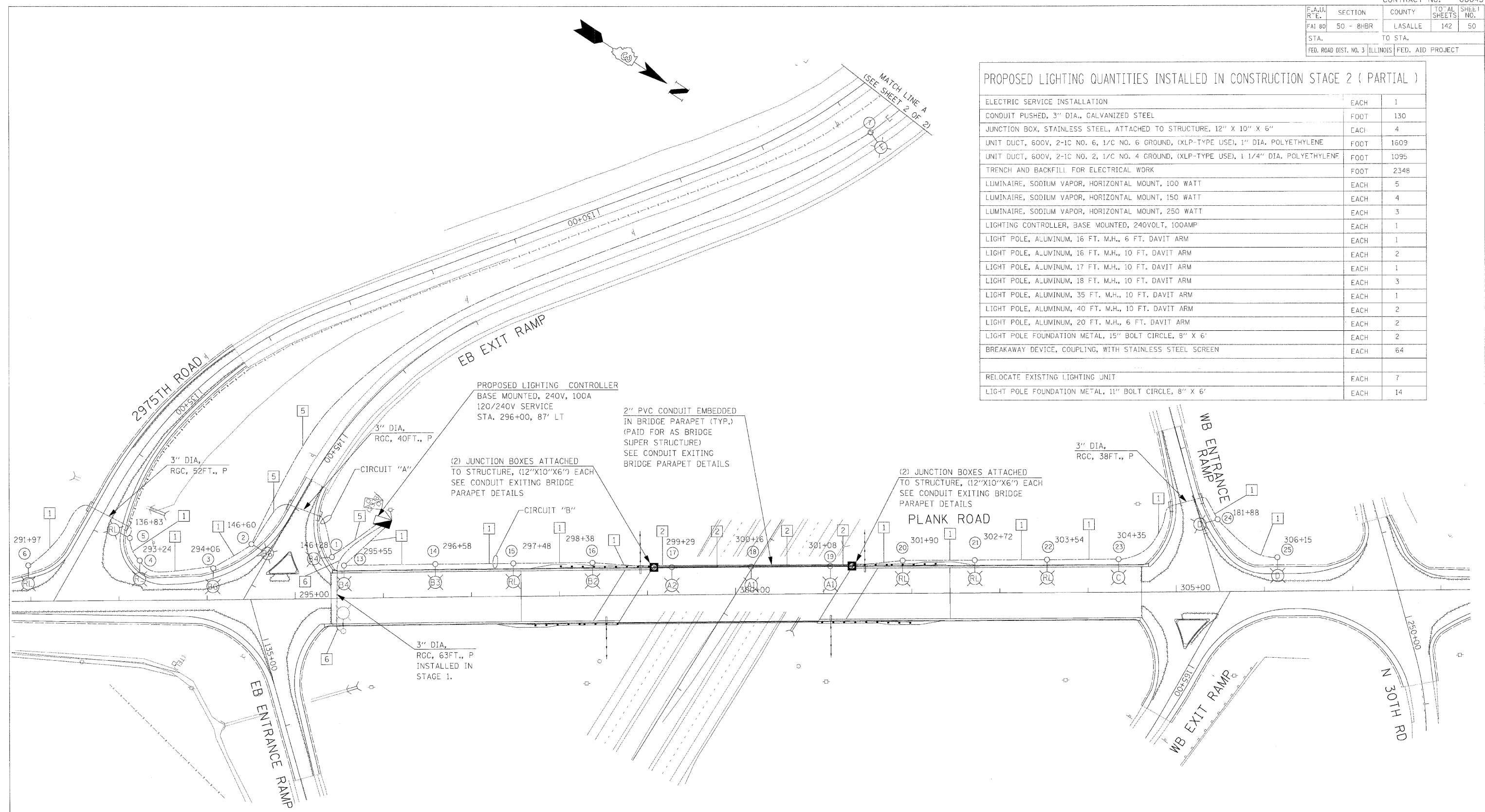


F.A.U. R'E.	SECTION	COUNTY	TOTAL SHEETS	SHEET NO.
FAI 80	50 - 8HBR	LASALLE	142	50
STA.	TO STA.			
FED. ROAD DIST. NO. 3 ILLINOIS FED. AID PROJECT				

PROPOSED LIGHTING QUANTITIES INSTALLED IN CONSTRUCTION STAGE 2 (PARTIAL)

ELECTRIC SERVICE INSTALLATION	EACH	1
CONDUIT PUSHED, 3" DIA., GALVANIZED STEEL	FOOT	130
JUNCTION BOX, STAINLESS STEEL, ATTACHED TO STRUCTURE, 12" X 10" X 6"	EACH	4
UNIT DUCT, 600V, 2-1C NO. 6, 1/C NO. 6 GROUND, (XLP-TYPE USE), 1" DIA. POLYETHYLENE	FOOT	1609
UNIT DUCT, 600V, 2-1C NO. 2, 1/C NO. 4 GROUND, (XLP-TYPE USE), 1 1/4" DIA. POLYETHYLENE	FOOT	1095
TRENCH AND BACKFILL FOR ELECTRICAL WORK	FOOT	2348
LUMINAIRE, SODIUM VAPOR, HORIZONTAL MOUNT, 100 WATT	EACH	5
LUMINAIRE, SODIUM VAPOR, HORIZONTAL MOUNT, 150 WATT	EACH	4
LUMINAIRE, SODIUM VAPOR, HORIZONTAL MOUNT, 250 WATT	EACH	3
LIGHTING CONTROLLER, BASE MOUNTED, 240VOLT, 100AMP	EACH	1
LIGHT POLE, ALUMINUM, 16 FT. M.H., 6 FT. DAVIT ARM	EACH	1
LIGHT POLE, ALUMINUM, 16 FT. M.H., 10 FT. DAVIT ARM	EACH	2
LIGHT POLE, ALUMINUM, 17 FT. M.H., 10 FT. DAVIT ARM	EACH	1
LIGHT POLE, ALUMINUM, 18 FT. M.H., 10 FT. DAVIT ARM	EACH	3
LIGHT POLE, ALUMINUM, 35 FT. M.H., 10 FT. DAVIT ARM	EACH	1
LIGHT POLE, ALUMINUM, 40 FT. M.H., 10 FT. DAVIT ARM	EACH	2
LIGHT POLE, ALUMINUM, 20 FT. M.H., 6 FT. DAVIT ARM	EACH	2
LIGHT POLE FOUNDATION METAL, 15" BOLT CIRCLE, 8" X 6"	EACH	2
BREAKAWAY DEVICE, COUPLING, WITH STAINLESS STEEL SCREEN	EACH	64
RELOCATE EXISTING LIGHTING UNIT	EACH	7
LIGHT POLE FOUNDATION METAL, 11" BOLT CIRCLE, 8" X 6"	EACH	14



PLOT DATE = 2/2/2009
 FILE NAME = 8FILE19
 PLOT SCALE = 8SCALE8
 PLOT TIME = 11:23:44 AM

REVISIONS	
NAME	DATE

ILLINOIS DEPARTMENT OF TRANSPORTATION
 PLANK ROAD OVER I-80
 PROPOSED LIGHTING WORK TO BE
 PERFORMED IN CONSTRUCTION STAGE 2

SCALE: 1"=50'
 DATE: 12/2/2009
 DRAWN BY: RDP
 CHECKED BY: PKG