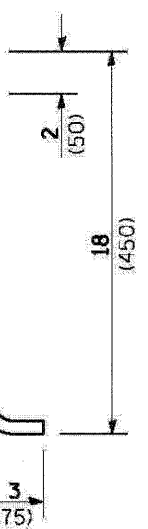
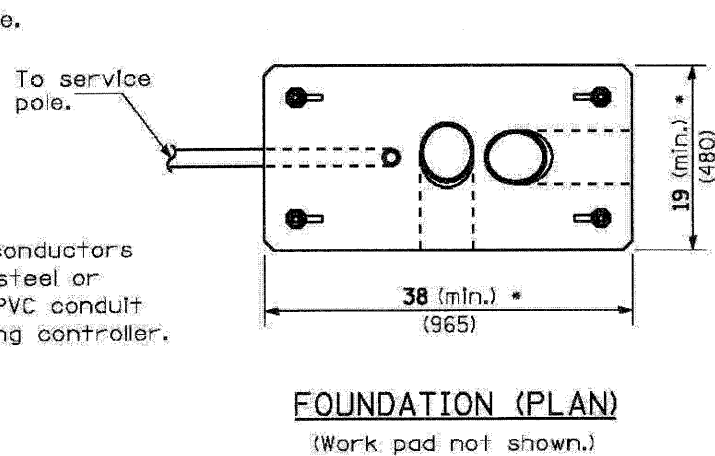
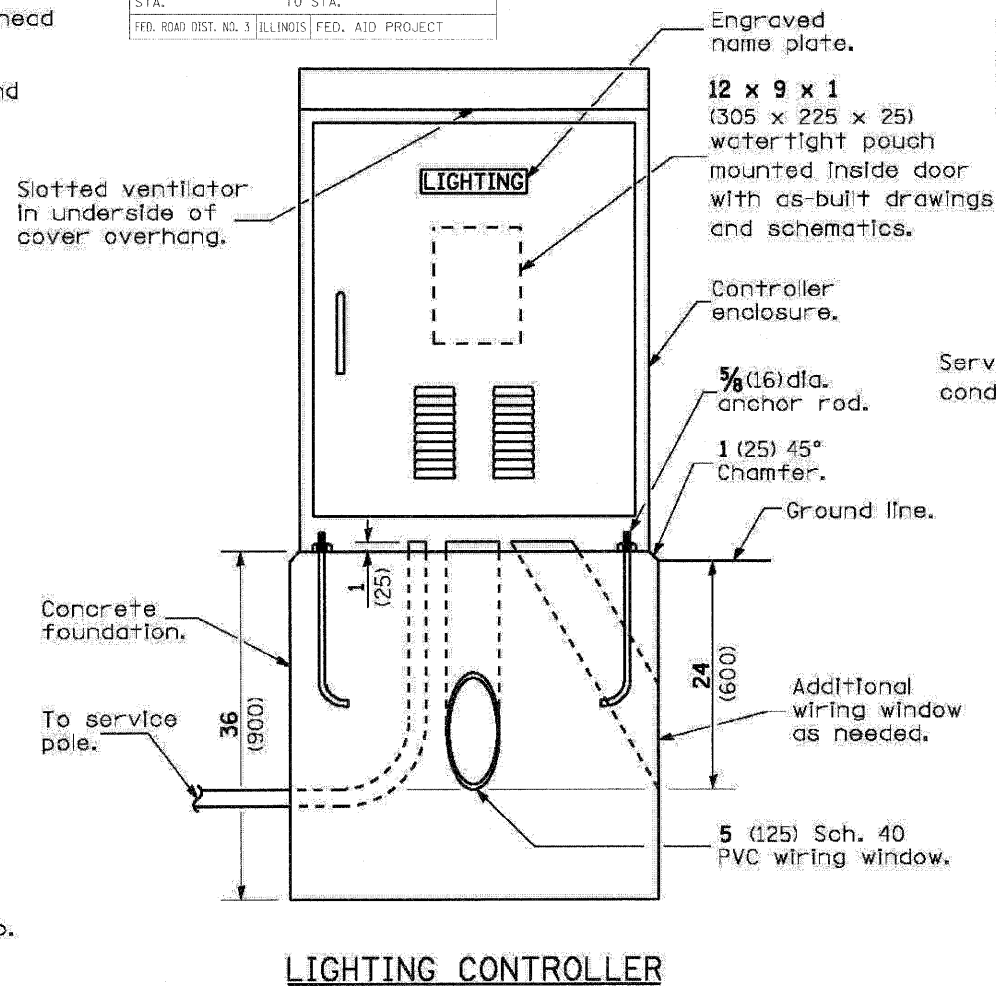
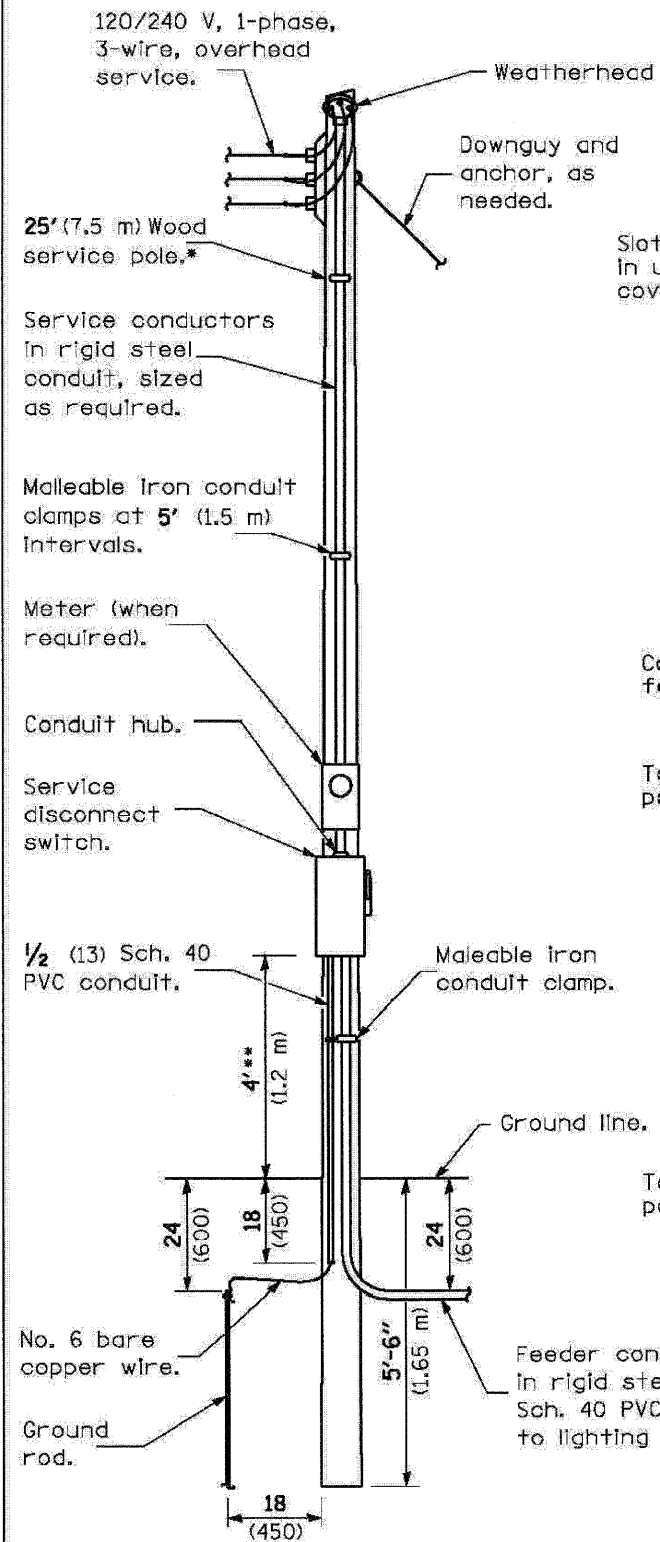
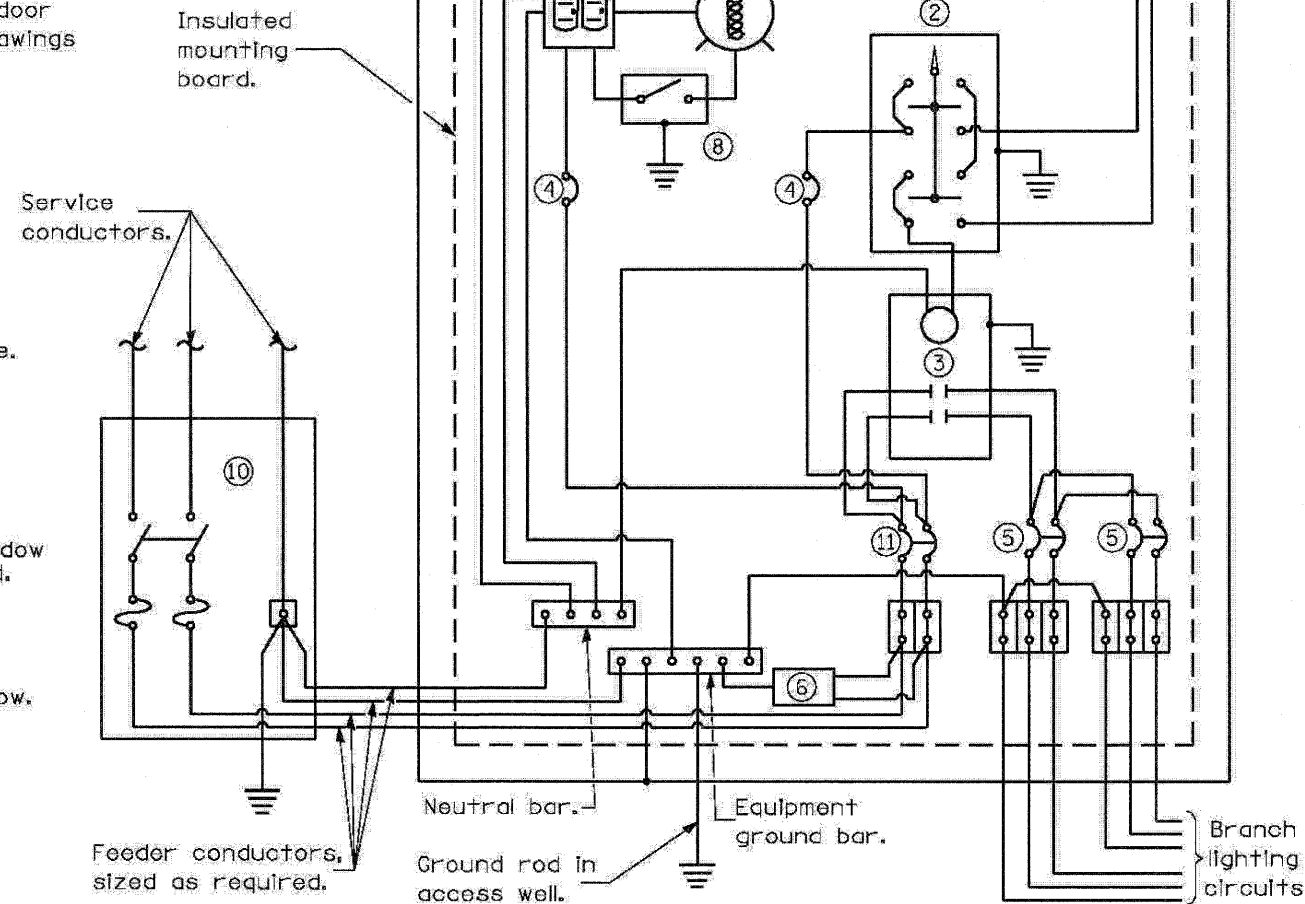


F.A.D. RTE.	SECTION	COUNTY	TOTAL SHEETS	SHEET NO.
FBI 80	50 - BHRB	LASALLE	142	60
STA.	TO STA.			
FED. ROAD DIST. NO. 3	ILLINOIS FED. AID PROJECT			



Controller enclosure, minimum dimensions: 50H x 36W x 17D\* (1270 x 915 x 430)



- ① Photocell with integral surge arrester.
  - ② HAND-OFF-AUTO selector switch.
  - ③ 100 amp\*, electrically held contactor.
  - ④ 15 amp, 1-pole circuit breaker.
  - ⑤ 20 amp\*, 2-pole circuit breaker (two spares required but not shown).
  - ⑥ Surge arrester.
  - ⑦ GFCI duplex receptacle.
  - ⑧ Single-pole, single-throw switch.
  - ⑨ Incandescent luminaire, enclosed and gasketed with 100 watt lamp.
  - ⑩ Service disconnect switch - 2-pole, 3-wire, 100 amp\*, fused at 100 amp\*, solid neutral in NEMA 3R enclosure having lockable external handle.
  - ⑪ 100 amp\*, 2-pole circuit breaker.
- \* Size larger as needed.

**ELECTRIC SERVICE INSTALLATION**

\*\* Or as directed by Utility Company.

All dimensions are in inches (millimeters) unless otherwise shown.

DATE	REVISIONS
1-1-10	New standard.

**LIGHTING CONTROLLER  
240V, BASE MOUNTED**

**STANDARD 825021**

PLOT DATE = 2/3/2010  
 FILE NAME = #FILES#  
 PLOT SCALE = #SCALES#  
 PLOT TIME = #SCALES# AM

Illinois Department of Transportation

PASSED January 1, 2010

ENGINEER OF PRELIMINARY ENGINEERING

APPROVED January 1, 2010

ENGINEER OF DESIGN AND ENVIRONMENT

ISSUE 01-1-10