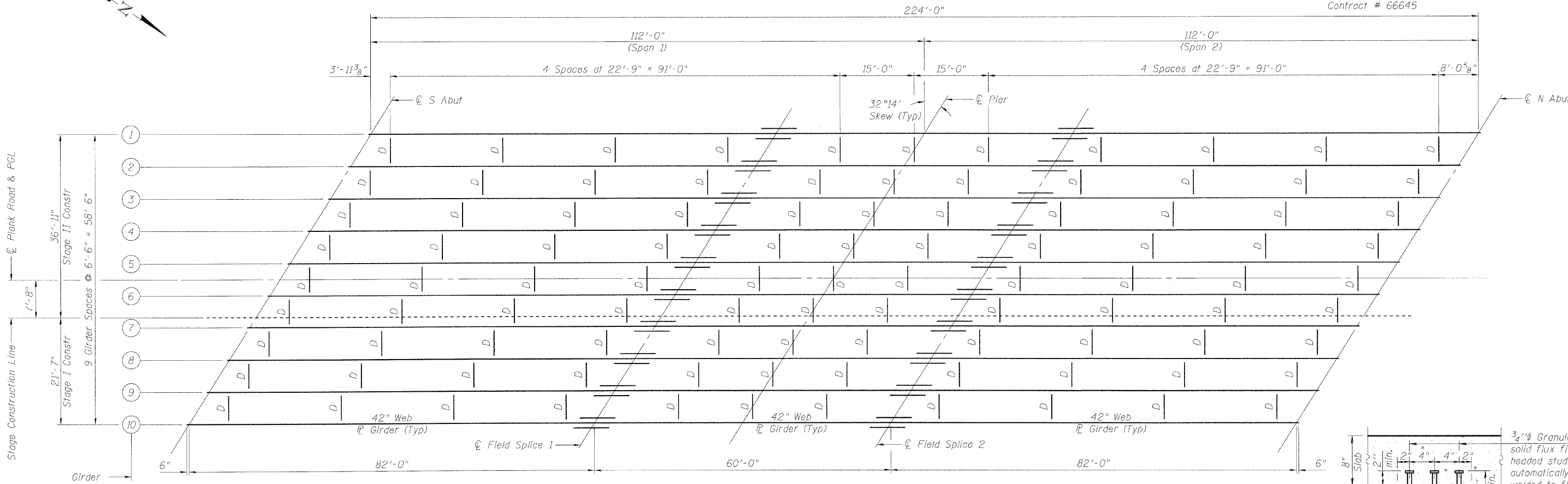


STATE OF ILLINOIS  
DEPARTMENT OF TRANSPORTATION

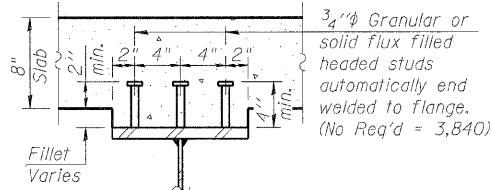
ROUTE NO.	SECTION	COUNTY	SHEET NO.	SHEET NO.
FAI 80	50 - 8HBR	LASALLE	143	77
FED. ROAD DIST. NO. 7		ILLINOIS	FED. AID PROJECT-	

SHEET NO. 16  
26 SHEETS

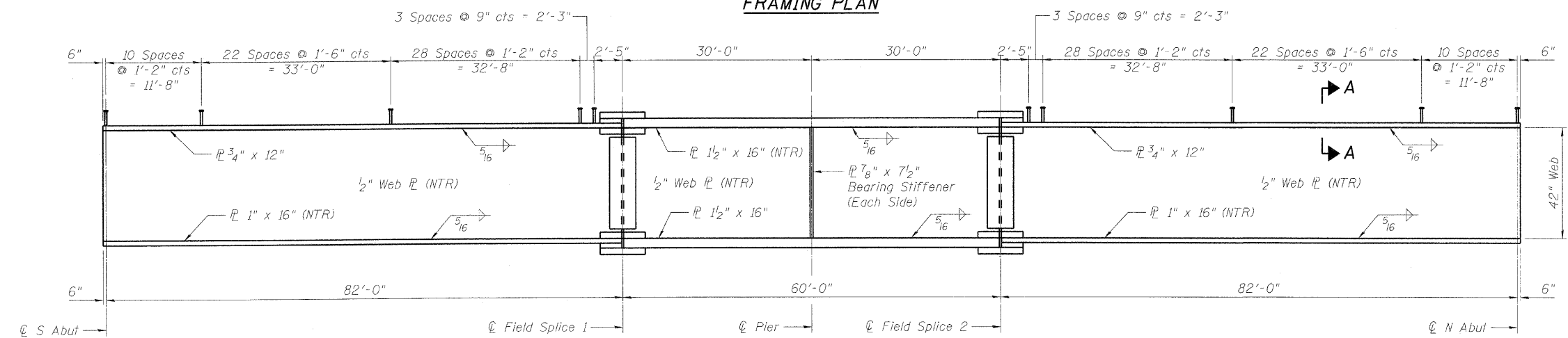
Contract # 66645



FRAMING PLAN



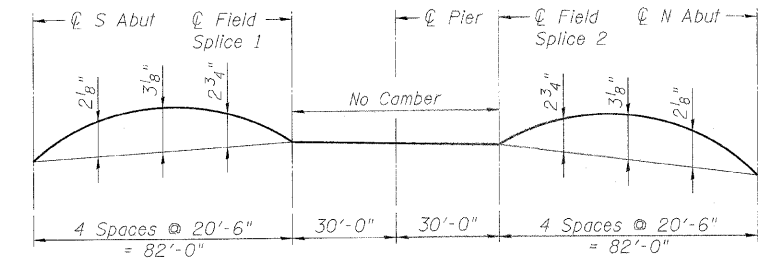
SECTION A-A



GIRDER ELEVATION

TOP OF WEB ELEVATION TABLE  
(For Fabrication Use Only)

Girder	℄ S Abut	℄ Field Splice 1	℄ Pier	℄ Field Splice 2	℄ N Abut
1	675.07	675.31	675.27	675.24	674.81
2	675.18	675.44	675.41	675.38	674.97
3	675.25	675.53	675.52	675.50	675.11
4	675.33	675.63	675.62	675.61	675.24
5	675.40	675.73	675.72	675.72	675.37
6	675.37	675.72	675.72	675.73	675.40
7	675.24	675.61	675.62	675.63	675.32
8	675.11	675.50	675.52	675.53	675.25
9	674.98	675.38	675.41	675.44	675.17
10	674.81	675.24	675.27	675.31	675.06



CAMBER DIAGRAM  
(Upward Camber is Positive)

NOTES:  
All structural steel shall be AASHTO M 270 Grade 50, unless otherwise noted.  
See Sheet No. 17 for Field Splice details, Diaphragm details and Table of Moments and Shears.  
All diaphragms shall be installed as steel is erected and secured with erection pins and bolts except as otherwise noted. Individual diaphragms at supports may be temporarily disconnected to install bearing anchor rods.  
Load carrying components designated "NTR" shall conform to the Supplemental Requirements for Notch Toughness, Zone 2.

FRAMING PLAN  
PLANK ROAD OVER  
FAI ROUTE 80 (I-80)  
SECTION 50-8HBR  
LASALLE COUNTY  
STATION 3886+74.90  
STRUCTURE NO. 050-0249

DESIGNED	- BHS
CHECKED	- BPS
DRAWN	- RRG
CHECKED	- GSP



PLOT DATE = 2/13/2018  
FILE NAME = g:\projects\20516891\061\roads\PLR\_FRAMING.dwg  
PLOT SCALE = N/A  
USER NAME = zhangrb