

STATE OF ILLINOIS
DEPARTMENT OF TRANSPORTATION

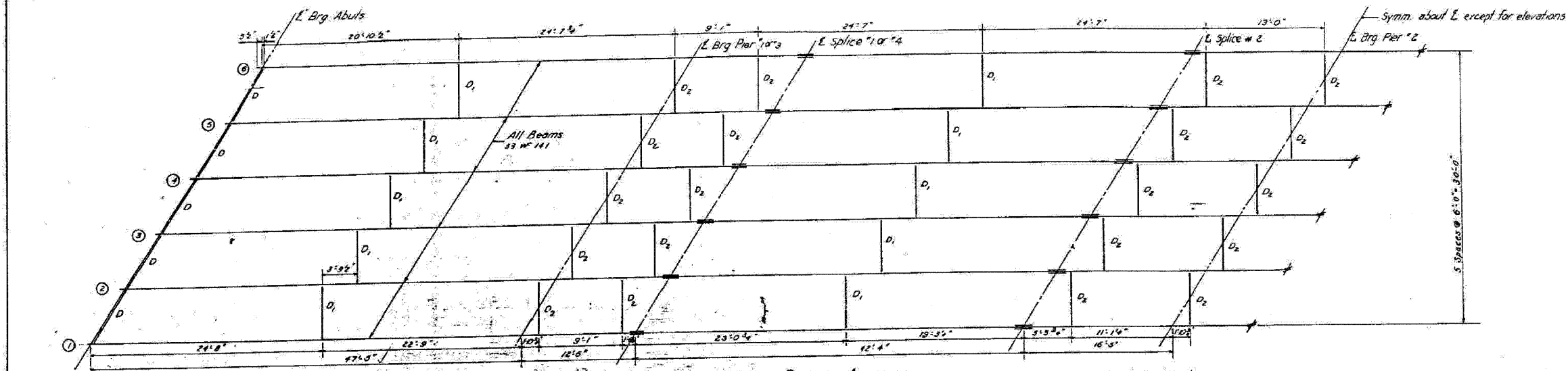
ROUTE NO.	SECTION	COUNTY	TOTAL SHEETS	SHEET NO.
FAI 80	50-BHR	LASALLE	143	89
FED. ROAD DIST. NO. 7	ILLINOIS	FED. AID PROJECT		

Contract # 66645

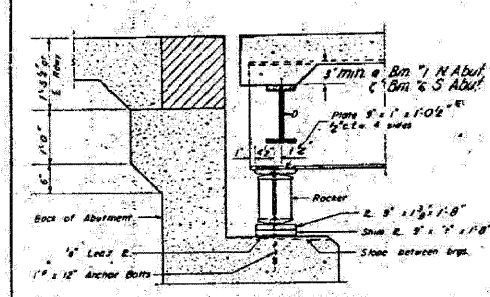
STATE OF ILLINOIS
DEPARTMENT OF PUBLIC WORKS & BUILDINGS
DIVISION OF HIGHWAYS

DATE	BY	SCALE	NO.	NO.
11-80	50-BHR	1:20	16	5

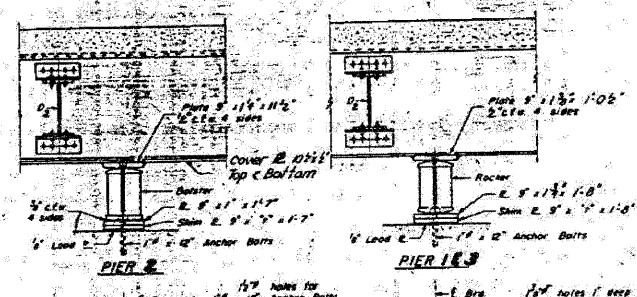
SHEET NO. 2
OF 6 SHEETS



STRUCTURAL STEEL LAYOUT

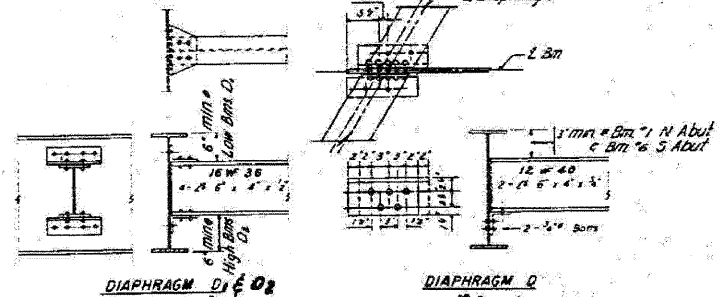


SECTION AT ABUTMENTS



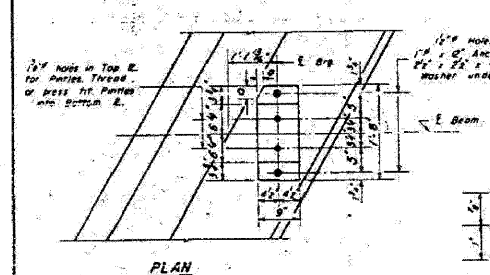
PIER 2

PIER 133

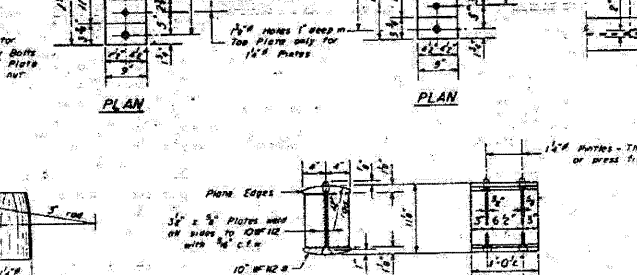


DIAPHRAGM D1 & D2

DIAPHRAGM Q



PLAN

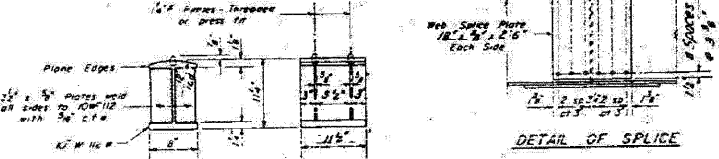


PLAN

PLAN



DETAIL OF COVER PLATES



DETAIL OF BEARING AT PIER 2

ELEVATION TOP OF BEAMS

Location	Beam #1	#2	#3	#4	#5	#6
E. Brg N Abut	673.749	673.907	673.993	674.015	674.072	673.881
E. Brg Pier 2	673.908	673.998	674.187	674.180	674.130	674.012
E. Splice #1	674.001	674.138	674.218	674.219	674.171	674.046
E. Splice #2	674.136	674.249	674.309	674.309	674.249	674.136
E. Brg Pier 13	674.136	674.249	674.309	674.309	674.249	674.136
E. Splice #3	674.136	674.249	674.309	674.309	674.249	674.136
E. Splice #4	674.046	674.171	674.218	674.218	674.136	674.011
E. Brg Pier 13	674.046	674.130	674.180	674.167	674.070	673.949
E. Brg S Abut	673.881	673.928	674.015	673.979	673.907	673.749

Note: Elevation Top of Beam does not include Dead Load Deflection.

DESIGNED: T. Tanaka
CHECKED: H.A. Thomas
DRAWN: T.T. W. & Souvank
CHECKED: H.A. Thomas

EXPIRED: [Signature]
PASSED: [Signature]
APPROVED: [Signature]

MAR 23 1959

* TABLE OF "t" DIMENSIONS

Location	Beam #1	#2	#3	#4	#5	#6
E. Brg N Abut	0	2	4	2	0	0
E. Brg Pier 1	0	0	0	0	0	0
E. Brg Pier 2	0	2	0	0	0	0
E. Brg Pier 13	0	2	0	0	0	0
E. Brg S Abut	0	0	2	4	2	0

* t denotes shim thickness

STRUCTURAL STEEL
SA. RT. 16 (PLANK RD.) OVER
FAI. RT. 80 - SEC. 50-BHR
LASALLE COUNTY
STA. 496 + 22.50

EXISTING PLANS - 1959

PLANK ROAD OVER
FAI ROUTE 80 (I-80)
SECTION 50-8HBR
LASALLE COUNTY
STATION 3886+74.90
STRUCTURE NO. 050-0249

FOR INFORMATION ONLY