

STATE OF ILLINOIS
DEPARTMENT OF TRANSPORTATION

ROUTE NO.	SECTION	COUNTY	STATION	SHEET NO.
FAI 80	50-8HBR	LASALLE	143	99
FED. ROAD DIST. NO. 7	ILLINOIS	FED. AID PROJECT		

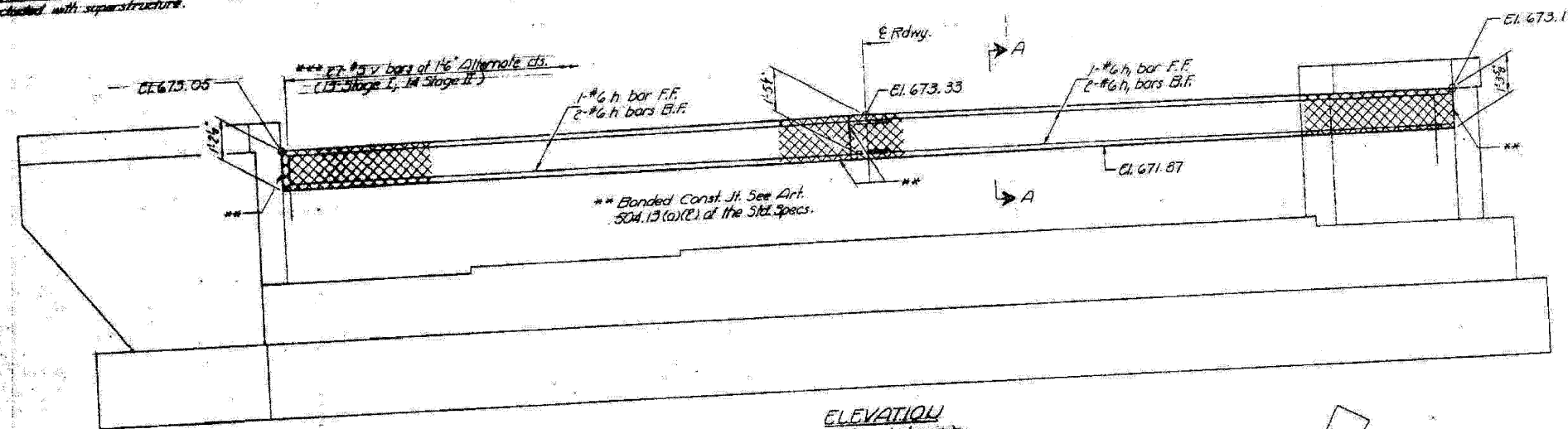
Contract # 66645

ROUTE NO.	SECTION	COUNTY	STATION	SHEET NO.
FAI 80	50-8HBR	LASALLE	143	99
FED. ROAD DIST. NO. 7	ILLINOIS	FED. AID PROJECT		

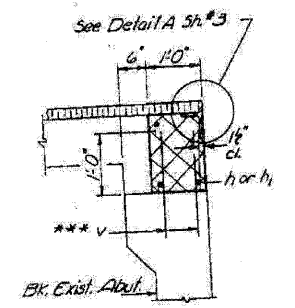
8 SHEETS

Cracks that had been to be poured after superstructure
Notes: Some bars removed. Quantity of Class X Concrete
Included with superstructure.

STATE OF ILLINOIS
DEPARTMENT OF TRANSPORTATION

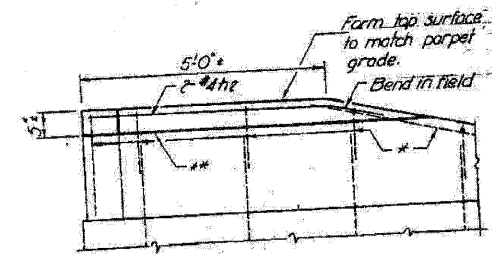


ELEVATION
(End Posts not shown)



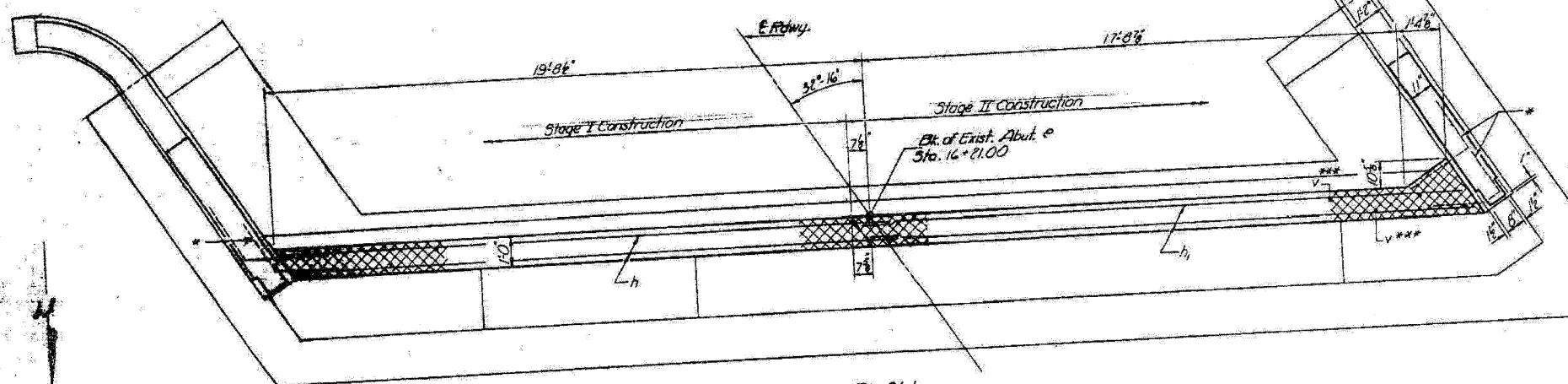
SEC. A-A

*** Drill 6" x 10" hole, fill 1/2 full with epoxy grout before placement of v bars. See Special Provisions for epoxy grout.



VIEW B-B
(End Post)

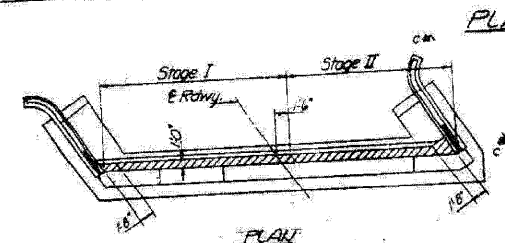
* Existing reinforcement extending into the removal area shall be cleaned, straightened and incorporated into the new construction. Cast incidental.



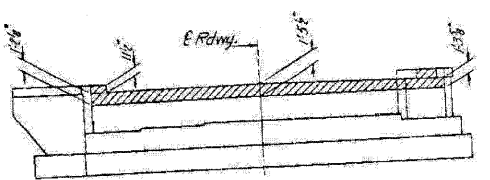
PLAN

BILL OF MATERIAL

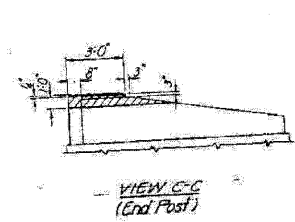
Bar	Qty	Size	Length	Notes
h	3	#6	21'-0"	
h ₁	3	#6	20'-0"	
h ₂	2	#4	7'-0"	
v	27	#5	2'-0"	
Reinforcement Bars	LB			660
Class X Concrete	cu yd			0.8
Concrete Removal	cu yd			3.0



CONCRETE REMOVAL



ELEVATION
(End Posts not shown)



VIEW C-C
(End Post)

DESIGNED	Reviewed	EXAMINED	
CHECKED	Zylber	PAID	
DRAWN	id	APPROVED	
CHECKED	Zylber		

SOUTH ABUTMENT
FAI RT. 80 SEC. 50-8HBR
LA SALLE COUNTY
STA. 496+22.50

EXISTING PLANS - 1985

PLANK ROAD OVER
FAI ROUTE 80 (I-80)
SECTION 50-8HBR
LASALLE COUNTY
STATION 3886+74.90
STRUCTURE NO. 050-0249

FOR INFORMATION ONLY