

INDEX OF SHEETS

1	COVER SHEET
2	GENERAL NOTES
3	SUMMARY OF QUANTITIES
4	TYPICAL SECTIONS
5-6	SCHEDULES
7	SURVEY TIES
8	PROJECT LAYOUT
9-13	DETAILS

STANDARDS

000001-05	STANDARD SYMBOLS, ABBREVIATIONS AND PATTERNS
001006	DECIMAL OF AN INCH AND OF A FOOT
424001-05	CURB RAMPS FOR SIDEWALK
668001-01	U.S. GEOLOGICAL SURVEY AND NATIONAL GEODETIC SURVEY BENCHMARKS RESETTING METHOD
701011-02	OFF-ROAD MOVING OPERATIONS 2L, 2W, DAY ONLY
701106-02	OFF-ROAD OPERATIONS, MULTILANE, MORE THAN 15' (4.5 m) AWAY
701301-03	LANE CLOSURE, 2L, 2W, SHORT TIME OPERATIONS
701306-02	LANE CLOSURE, 2L, 2W, SLOW MOVING OPERATIONS DAY ONLY, FOR SPEEDS ≥ 45 MPH
701311-03	LANE CLOSURE, 2L, 2W, MOVING OPERATIONS - DAY ONLY
701901-01	TRAFFIC CONTROL DEVICES
780001-02	TYPICAL PAVEMENT MARKINGS
781001-03	TYPICAL APPLICATIONS RAISED REFLECTIVE PAVEMENT MARKERS
667101-01	PERMANENT SURVEY MARKERS

STATE OF ILLINOIS
DEPARTMENT OF TRANSPORTATION
DIVISION OF HIGHWAYS
PROPOSED
HIGHWAY PLANS

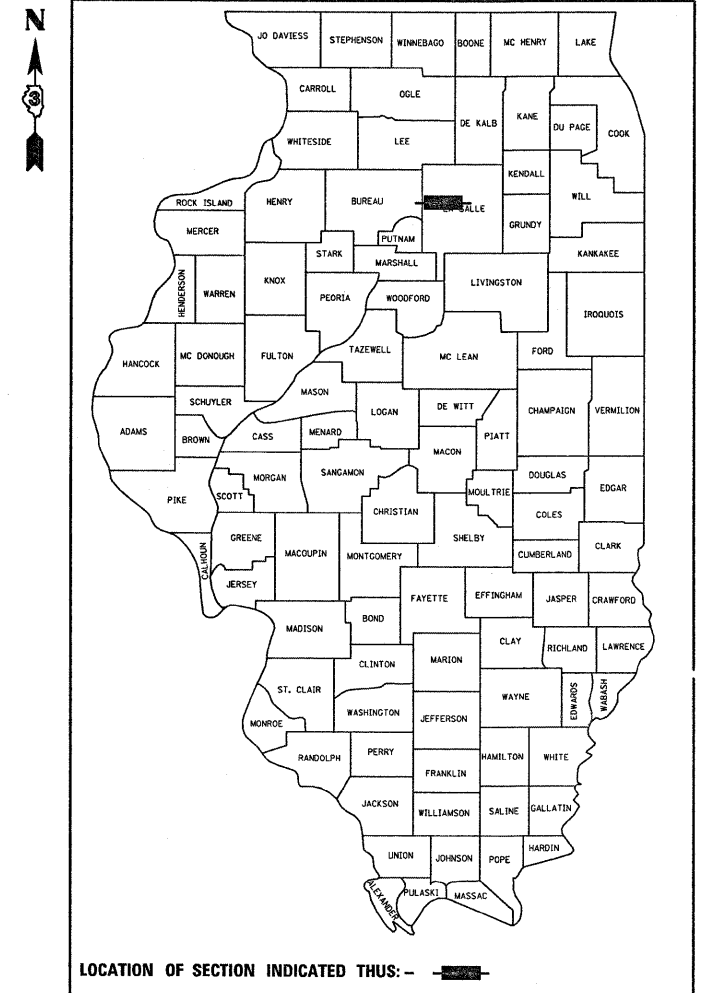
FAP ROUTE 619 (IL 71)
SECTION (103)RS-3

3P MILLING AND RESURFACING
FROM 0.2 MILES WEST
OF CH 54 TO WEST OF I-39
LASALLE COUNTY

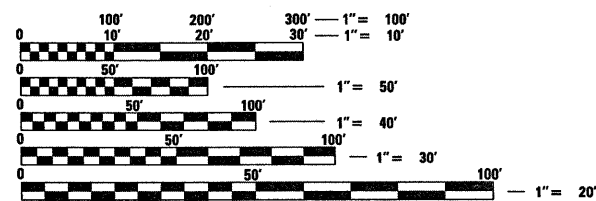
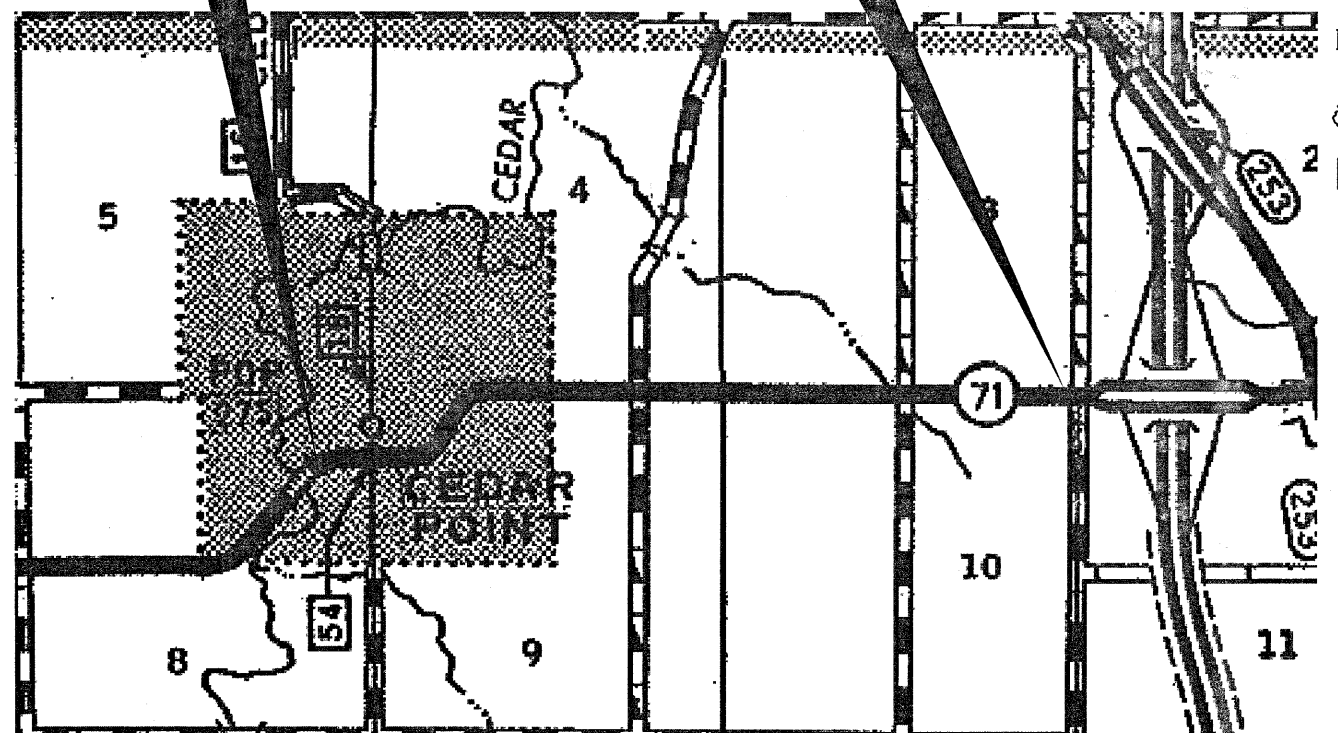
C-93-055-10

F.A.P. RTE.	SECTION	COUNTY	TOTAL SHEETS	SHEET NO.
619	(103)RS-3	LASALLE	13	1
		ILLINOIS	CONTRACT NO. 66999	

D-93-021-10



BEGIN IMPROVEMENT
STA 206 + 23.70 **END IMPROVEMENT**
STA 328 + 62.58



FULL SIZE PLANS HAVE BEEN PREPARED USING STANDARD ENGINEERING SCALES. REDUCED SIZED PLANS WILL NOT CONFORM TO STANDARD SCALES. IN MAKING MEASUREMENTS ON REDUCED PLANS, THE ABOVE SCALES MAY BE USED.

J.U.L.I.E.
JOINT UTILITY LOCATION INFORMATION FOR EXCAVATION
1-800-892-0123
OR 811

PROJECT ENGINEER: JOE KANNEL
UNIT CHIEF: MICHELE LINDEMANN

CONTRACT NO. 66999

LOCATION MAP

GROSS LENGTH = 12238.88 FT. = 2.318 MILE
NET LENGTH = 12238.88 FT. = 2.318 MILE

RURAL MINOR ARTERIAL
2010 ADT = 2450
PV = 78% SU = 7% MU = 15%

STATE OF ILLINOIS
DEPARTMENT OF TRANSPORTATION
DIVISION OF HIGHWAYS

SUBMITTED 1-21 2010

George Reynolds
DEPUTY DIRECTOR OF HIGHWAYS, REGION ENGINEER

March 19, 2010
Scott E. Still, P.E.
Acting ENGINEER OF DESIGN AND ENVIRONMENT

March 19, 2010
Christina M. Reed
DIRECTOR OF HIGHWAYS, CHIEF ENGINEER

PRINTED BY THE AUTHORITY
OF THE STATE OF ILLINOIS