

**INDEX OF SHEETS**

1	COVER SHEET
2	GENERAL NOTES
3	SUMMARY OF QUANTITIES
4	TYPICAL SECTIONS
5-6	SCHEDULES
7	SURVEY TIES
8	PROJECT LAYOUT
9-13	DETAILS

**STANDARDS**

000001-05	STANDARD SYMBOLS, ABBREVIATIONS AND PATTERNS
001006	DECIMAL OF AN INCH AND OF A FOOT
424001-05	CURB RAMPS FOR SIDEWALK
668001-01	U.S. GEOLOGICAL SURVEY AND NATIONAL GEODETIC SURVEY BENCHMARKS RESETTING METHOD
701011-02	OFF-ROAD MOVING OPERATIONS 2L, 2W, DAY ONLY
701106-02	OFF-ROAD OPERATIONS, MULTILANE, MORE THAN 15' (4.5 m) AWAY
701301-03	LANE CLOSURE, 2L, 2W, SHORT TIME OPERATIONS
701306-02	LANE CLOSURE, 2L, 2W, SLOW MOVING OPERATIONS DAY ONLY, FOR SPEEDS ≥ 45 MPH
701311-03	LANE CLOSURE, 2L, 2W, MOVING OPERATIONS - DAY ONLY
701901-01	TRAFFIC CONTROL DEVICES
780001-02	TYPICAL PAVEMENT MARKINGS
781001-03	TYPICAL APPLICATIONS RAISED REFLECTIVE PAVEMENT MARKERS
667101-01	PERMANENT SURVEY MARKERS

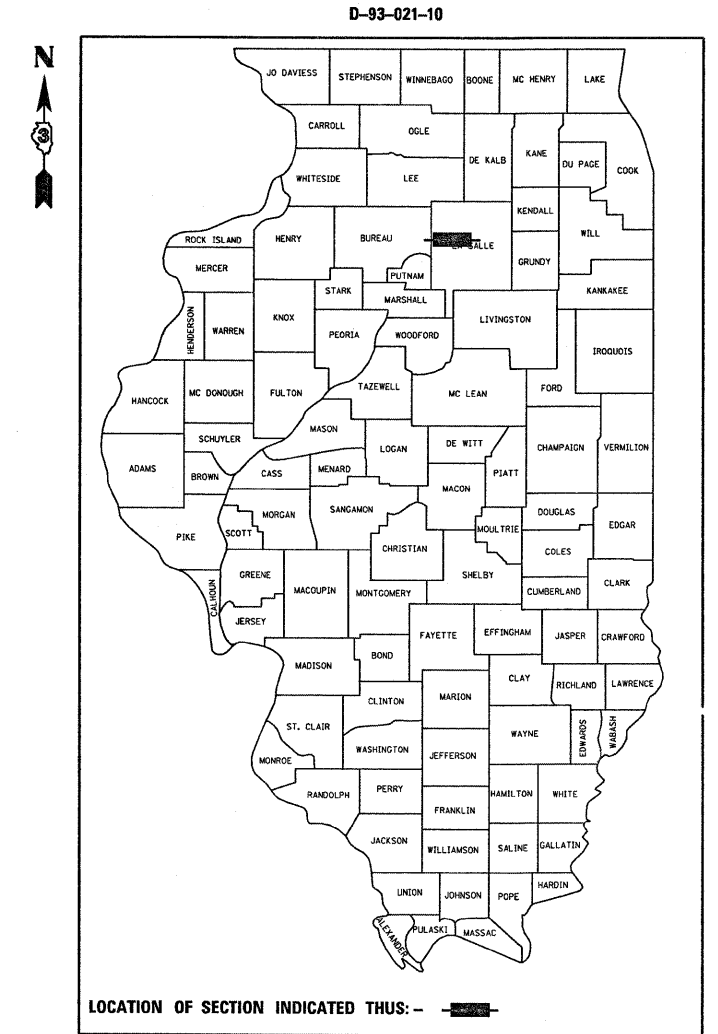
**STATE OF ILLINOIS**  
**DEPARTMENT OF TRANSPORTATION**  
**DIVISION OF HIGHWAYS**  
**PROPOSED**  
**HIGHWAY PLANS**

**FAP ROUTE 619 (IL 71)**  
**SECTION (103)RS-3**

**3P MILLING AND RESURFACING**  
**FROM 0.2 MILES WEST**  
**OF CH 54 TO WEST OF I-39**  
**LASALLE COUNTY**

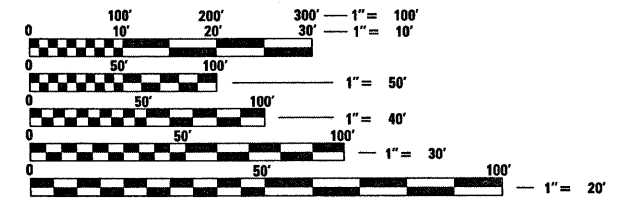
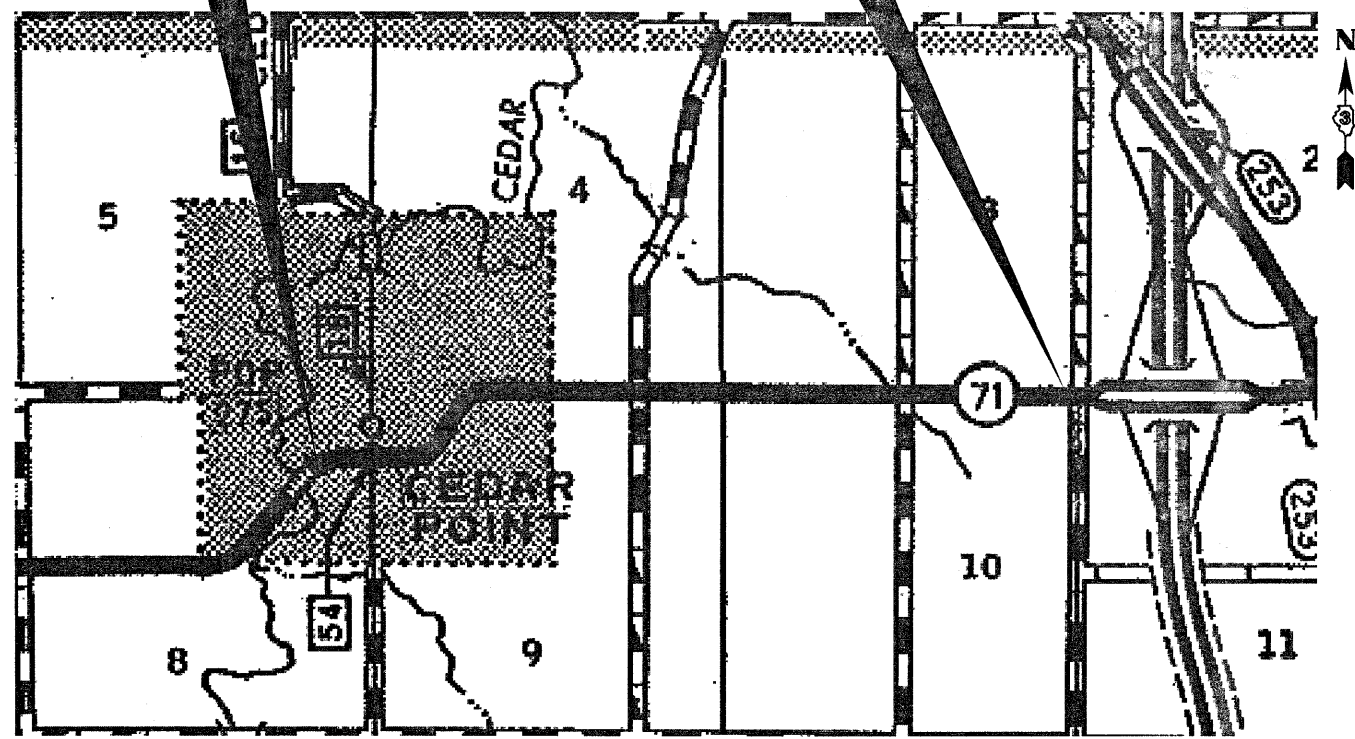
C-93-055-10

F.A.P. RTE.	SECTION	COUNTY	TOTAL SHEETS	SHEET NO.
619	(103)RS-3	LASALLE	13	1
		ILLINOIS	CONTRACT NO. 66999	



**BEGIN IMPROVEMENT**  
**STA 206 + 23.70**

**END IMPROVEMENT**  
**STA 328 + 62.58**



FULL SIZE PLANS HAVE BEEN PREPARED USING STANDARD ENGINEERING SCALES. REDUCED SIZED PLANS WILL NOT CONFORM TO STANDARD SCALES. IN MAKING MEASUREMENTS ON REDUCED PLANS, THE ABOVE SCALES MAY BE USED.

J.U.L.I.E.  
 JOINT UTILITY LOCATION INFORMATION FOR EXCAVATION  
 1-800-892-0123  
 OR 811

**PROJECT ENGINEER: JOE KANNEL**  
**UNIT CHIEF: MICHELE LINDEMANN**

**CONTRACT NO. 66999**

**LOCATION MAP**

GROSS LENGTH = 12238.88 FT. = 2.318 MILE  
 NET LENGTH = 12238.88 FT. = 2.318 MILE

**RURAL MINOR ARTERIAL**  
**2010 ADT = 2450**  
**PV = 78% SU = 7% MU = 15%**

STATE OF ILLINOIS  
 DEPARTMENT OF TRANSPORTATION  
 DIVISION OF HIGHWAYS

SUBMITTED 1-21 2010

George Reynolds  
 DEPUTY DIRECTOR OF HIGHWAYS, REGION ENGINEER

March 19, 2010  
Scott E. Still, P.E.  
 Acting ENGINEER OF DESIGN AND ENVIRONMENT

March 19, 2010  
Christina M. Reed  
 DIRECTOR OF HIGHWAYS, CHIEF ENGINEER

**PRINTED BY THE AUTHORITY**  
**OF THE STATE OF ILLINOIS**

**GENERAL NOTES**

THE THICKNESS OF HMA SHOWN ON THE PLANS IS THE NOMINAL THICKNESS. DEVIATIONS FROM THE NOMINAL THICKNESS WILL BE PERMITTED WHEN SUCH DEVIATIONS OCCUR DUE TO IRREGULARITIES IN THE EXISTING SURFACE OR BASE ON WHICH THE HMA IS PLACED.

THE HMA SURFACE OF ALL MAILBOX TURNOUTS, PRIVATE ENTRANCES, COMMERCIAL ENTRANCES, AND SIDE ROADS SHALL BE MADE NEATLY, IN A WORKMANLIKE MANNER, AND SHALL ACCURATELY CONFORM TO THE SHAPES AND DIMENSIONS SHOWN ON THE PLAN DETAILS. IF REQUIRED BY THE ENGINEER, THE CONTRACTOR SHALL BE REQUIRED TO SAW CUT THE HMA SURFACE TO CONFORM TO THE SHAPES AND DIMENSIONS SHOWN ON THE PLAN DETAILS. THIS WORK SHALL BE INCLUDED IN THE COST OF THE HMA SURFACE.

EXCEPT AS NOTED ON THE PLANS, PAVEMENT GRADES SHOWN ARE AT THE TOP OF PAVEMENT SURFACES.

THE ENGINEER WILL BE THE SOLE JUDGE CONCERNING CURING TIME FOR THE VARIOUS HMA LIFTS.

SEEDING SHALL NOT BE PERMITTED AT ANY TIME WHEN THE GROUND IS FROZEN, WET, OR IN AN UNTILLABLE CONDITION. LOCATIONS TO BE SEEDED WILL BE DETERMINED BY THE ENGINEER.

THE FINISHED EARTHWORK SHALL HAVE A VEGETATION SUSTAINING SOIL COVERING THE TOP FOUR INCHES IN AREAS TO BE SEEDED OR SODDED. THE VEGETATION SUSTAINING SOIL REQUIRED WILL NOT BE PAID FOR SEPARATELY BUT SHALL BE INCLUDED IN THE COST OF EARTH EXCAVATION AND FURNISHED EXCAVATION.

ON EXISTING PAVEMENT WHICH MAY BE SUPERELEVATED, THE NEW HMA PAVEMENT SHALL BE BUILT WITH THE SAME SUPERELEVATION UNLESS NEW SUPERELEVATION RATES ARE GIVEN ON THE PLANS.

ALL ELEVATIONS REFERRING TO U.S.G.S. MEAN SEA LEVEL DATUM.

ANY REFERENCE TO A STANDARD IN THESE PLANS SHALL BE INTERPRETED TO MEAN THE EDITION AS INDICATED BY THE SUBNUMBER SHOWN IN THE LIST OF STANDARDS OR THE COPY INCLUDED IN THESE PLANS.

THE FOLLOWING RATES OF APPLICATION HAVE BEEN USED IN CALCULATING PLAN QUANTITIES:

GRANULAR MATERIALS	2.05	TONS / CU YD
BITUMINOUS MATERIALS (PRIME COAT)	0.08	GAL / SQ YD
FOR ADDITIONAL HMA LIFTS "FOG COAT"	0.05	GAL / SQ YD
AGGREGATE PRIME COAT	0.002	TONS / SQ YD
HMA RESURFACING	112	LBS / SQ YD / IN
SHORT TERM PAVEMENT MARKING	10	FT / 100 FT OF APPLICATION
MIX FOR CRACKS, JTS & FLGWYS	0.0003	TONS / SQ YD
LEVEL BINDER (HAND METHOD)	0.0005	TONS / SQ YD
SUPPLEMENTAL WATERING	3	GAL / SQ YD / APPLICATION
CALCIUM CHLORIDE	2	LB / SQ YD / APPLICATION

THE CONTRACTOR SHALL CONTACT JULIE AT LEAST 48 HOURS PRIOR TO EXCAVATION TO DETERMINE WHICH UTILITIES ARE IN THE AREA.

NOTE:  
ALL SOILS DISTURBED BY ANY CONSTRUCTION OPERATION SHALL BE LEFT ON, AND INCORPORATED WITHIN, THE PROJECT LIMITS AND EXISTING RIGHT OF WAY.

STATE OF ILLINOIS  
DEPARTMENT OF TRANSPORTATION  
DISTRICT THREE

PREPARED BY: *Dina Bonvil*  
ACTING DISTRICT STUDIES & PLANS ENGINEER

DATE: \_\_\_\_\_

EXAMINED BY: *Ashley Dugan*  
DISTRICT CONSTRUCTION ENGINEER

*Wayne Phillips*  
DISTRICT MATERIALS ENGINEER

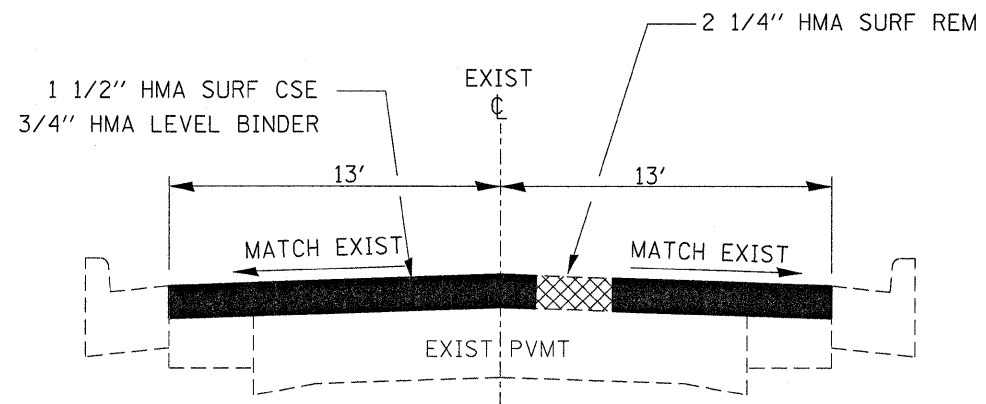
*James A. Warden*  
DISTRICT OPERATIONS ENGINEER

FILE NAME =	USER NAME = carperterdj	DESIGNED -	REVISED -	<b>STATE OF ILLINOIS DEPARTMENT OF TRANSPORTATION</b>	<b>GENERAL NOTES</b>	F.A.P. RTE.	SECTION	COUNTY	TOTAL SHEETS	SHEET NO.	
ca:\pw\work\pwidot\carperterdj\169243\366999-ah-t-cover.dgn		DRAWN -	REVISED -			619	(103)RS-3	LASALLE	13	2	
PLOT SCALE = 50.0000' / IN.		CHECKED -	REVISED -			SCALE: _____ SHEET NO. ___ OF ___ SHEETS STA. _____ TO STA. _____		CONTRACT NO. 66999			
PLOT DATE = Jan 21, 2010 - 07:17:48 AM		DATE -	REVISED -			ILLINOIS FED. AID PROJECT					

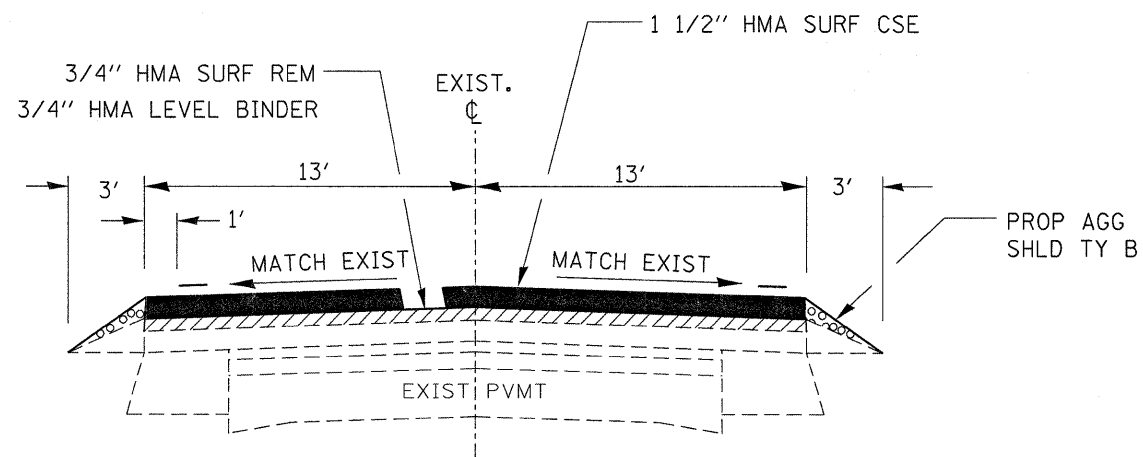
SUMMARY OF QUANTITIES			100% STATE
CODE NO.	CONSTRUCTION CODE TYPE:		1000
	ITEM	UNIT	TOTAL QUANTITY
20200100	EARTH EXCAVATION	CUYD	9
20400800	FURNISHED EXCAVATION	CUYD	8
25000200	SEEDING, CLASS 2	ACRE	0.1
25000400	NITROGEN FERTILIZER NUTRIENT	POUND	5.2
25000500	PHOSPHORUS FERTILIZER NUTRIENT	POUND	5.2
25000800	POTASSIUM FERTILIZER NUTRIENT	POUND	5.2
25100630	EROSION CONTROL BLANKET	SQ YD	260
25200110	SODDING, SALT TOLERANT	SQ YD	56
40200800	AGGREGATE SURFACE COURSE, TYPE B	TON	13
40600100	BITUMINOUS MATERIALS (PRIME COAT)	GALLON	4854
40600300	AGGREGATE (PRIME COAT)	TON	75
40600400	MIXTURE FOR CRACKS, JOINTS, AND FLANGEWAYS	TON	11
40600525	LEVELING BINDER (HAND METHOD), N50	TON	18
40600625	LEVELING BINDER (MACHINE METHOD), N50	TON	1485
40600895	CONSTRUCTING TEST STRIP	EACH	1
40600982	HOT-MIX ASPHALT SURFACE REMOVAL - BUTT JOINT	SQ YD	248
40600990	TEMPORARY RAMP	SQ YD	280
40603310	HOT-MIX ASPHALT SURFACE COURSE, MIX "C", N50	TON	2970
40800050	INCIDENTAL HOT-MIX ASPHALT SURFACING	TON	252
42400100	PORTLAND CEMENT CONCRETE SIDEWALK 4 INCH	SQ FT	377
42400800	DETECTABLE WARNINGS	SQ FT	76
44000152	HOT-MIX ASPHALT SURFACE REMOVAL, 3/4"	SQ YD	26460
44000158	HOT-MIX ASPHALT SURFACE REMOVAL, 2 1/4"	SQ YD	10498
44000500	COMBINATION CURB AND GUTTER REMOVAL	FOOT	92
44000600	SIDEWALK REMOVAL	SQ FT	377
48102100	AGGREGATE WEDGE SHOULDER, TYPE B	TON	342
60255500	MANHOLES TO BE ADJUSTED	EACH	1
60605000	COMBINATION CONCRETE CURB AND GUTTER, TYPE B-6.24	FOOT	92
66700205	PERMANENT SURVEY MARKERS, TYPE I	EACH	3
67000400	ENGINEER'S FIELD OFFICE, TYPE A	CAL MO	3
67100100	MOBILIZATION	L SUM	1
70100480	TRAFFIC CONTROL AND PROTECTION, STANDARD 701306	L SUM	1
70300100	SHORT-TERM PAVEMENT MARKING	FOOT	3672

SUMMARY OF QUANTITIES (CONTINUED)			100% STATE
CODE NO.	CONSTRUCTION CODE TYPE:		1000
	ITEM	UNIT	TOTAL QUANTITY
70300220	TEMPORARY PAVEMENT MARKING LINE 4"	FOOT	20408
70300240	TEMPORARY PAVEMENT MARKING LINE 6"	FOOT	2891
70301000	WORK ZONE PAVEMENT MARKING REMOVAL	SQ FT	409
* 78001110	PAINT PAVEMENT MARKING - LINE 4"	FOOT	20408
* 78001130	PAINT PAVEMENT MARKING - LINE 6"	FOOT	2891
* 78100100	RAISED REFLECTIVE PAVEMENT MARKER	EACH	157
78300200	RAISED REFLECTIVE PAVEMENT MARKER REMOVAL	EACH	157
X0322729	MATERIAL TRANSFER DEVICE	TON	2970

\*SPECIALTY ITEMS



**STA. 206 + 23.70 TO STA. 237 + 75**



**STA. 237 + 75 TO STA. 328 + 62.58**

MIX DESIGN					
MIX	PG GRADE	DESIGN AIR VOIDS	MIXTURE COMPOSITION	FRICTION AGGREGATE	DENSITY METHOD TEST
HMA SURFACE	PG 58-22	4.0% @N50	IL 12.5 OR IL 9.5	MIXTURE C	CORES / CORRELATION
LEVELING BINDER	PG 58-22	4.0% @N50	IL 9.5		SATISFACTION OF ENGINEER

SIDEWALK SCHEDULE FOR NEW RAMP INSTALLATION											
LOCATION	ADA RAMP METHOD	PCC SIDEWALK 4" SQ FT	DETECTABLE WARNINGS SQ FT	CCC&G FT	SIDEWALK REMOVAL SQ FT	CC&G REM FOOT	SOD SALT TOLERANT SQ YD	NIT FERT NUT LB	PHOS FERT NUT LB	POT FERT NUT LB	EARTH EXC CU YD
CEDAR STREET											
NW	METHOD 1	38	11	12	38	12	7	0.1	0.1	0.1	1.2
NE	METHOD 1	119	18	30	119	30	15	0.2	0.2	0.2	2.5
SE	METHOD 2	62	14	13	62	13	10	0.1	0.1	0.1	1.7
SW	NONE										
OAK STREET											
NW	METHOD 1	34	11	12	34	12	6	0.1	0.1	0.1	1
NE	NONE										
SE	METHOD 1	41	8	12	41	12	7	0.1	0.1	0.1	1.2
SW	METHOD 5	83	14	13	83	13	11	0.1	0.1	0.1	1.8
TOTAL		377	76	92	377	92	56	0.7	0.7	0.7	9.4

SIDEROAD SCHEDULE													
LOCATION	SIDE	DESCRIPTION	EXISTING MATERIAL	WIDTH FOOT	AREA SQ YD	INC HMA SURF TON	AGG SURF CSE TON	BIT MAT'L (PR CT) GAL	AGG (PR CT) TON	TEMP RAMP SQ YD	HMA SURF REM 3/4" SQ YD	HMA SURF REM 2 1/4" SQ YD	HMA SURF REM BUTT JT SQ YD
211+50	LT	SYCAMORE ST.	HMA	24	123	15.5		16	0.2	20		123	
211+76.50	RT	SYCAMORE ST.	HMA	18	103	13		13.4	0.2	15		103	
214+90.26	LT	MAPLE ST.	HMA	23	120	15.1		15.6	0.2	19.2		120	
214+90.26	RT	MAPLE ST. STUB	HMA	20	110	13.9		14.3	0.2			110	
218+10.90	LT	CEDAR ST.	HMA	32	150	18.9		19.5	0.3	26.7		150	
218+10.90	RT	CEDAR ST.	HMA	24	123	15.5		16	0.2	20		123	
221+40.77	LT	OAK ST.	HMA	24	123	15.5		16	0.2	20		123	
221+40.77	RT	OAK ST.	HMA	24	123	15.5		16	0.2	20		123	
224+69.41	LT	ELM ST.	HMA	24	123	15.5		16	0.2	20		123	
224+66.80	RT	ELM ST.	HMA	24	123	15.5		16	0.2	20		123	
238+60	LT	FIRST ST.	HMA	50	210	26.5		27.3	0.4	27.8	154		56
245+61	RT	FE	AGG	14	21		1.8						
249+84	RT	FE	AGG	14	21		1.8						
249+91	LT	PE	HMA	14	21	1.8		1.7	0				6
263+10.5	LT	EAST 275TH ROAD	HMA	19	106	13.4		13.8	0.2	10.6	85		21
263+10.5	RT	EAST 275TH ROAD	HMA	14	90	11.3		11.7	0.2	7.8	74		16
276+52	LT	FE	AGG	14	21		1.8						
281+35.5	RT	PE	AGG	18	26		2.2						
296+94	RT	FE	AGG	14	21		1.8						
297+76.5	LT	FE	AGG	14	21		1.8						
298+98	LT	PE W/ MBTO	HMA	16	57	4.8		4.6	0.1				7
303+44.5	RT	EAST 350TH ROAD	HMA	16	96	12.1		12.5	0.2	8.9	78		18
303+44.6	RT	EAST 350TH ROAD	HMA	15	93	11.7		12.1	0.2	8.3	76		17
307+08	LT	PE W/ MBTO	HMA	14	54	4.5		4.3	0.1				6
308+43	LT	PE W/ MBTO	HMA	18	59	5		4.7	0.1				8
316+95.5	RT	PE	HMA / AGG	14	21	1.8	0.7	1.7	0				
318+71	LT	PE	HMA	14	21	1.8		1.7	0				6
318+71	LT	PE	HMA / AGG	30	39	3.3	1.4	3.1	0.1				
TOTAL						251.9	13.3	258	3.7	244.3	467	1221	161

PAVING SCHEDULE														
LOCATION	LENGTH FOOT	AVE PVMT WIDTH FOOT	HMA PVMT AREA SQ YD	HMA SURF CSE TON	HMA LEVEL BIND TON	HMA SURF REM 3/4" SQ YD	HMA SURF REM 2 1/4" SQ YD	HMA SURF REM BUTT JT SQ YD	TEMP RAMPS SQ YD	BIT MAT (PR CT) GALLON	AGG (PR CT) TON	MIX FOR CRACKS, JOINTS & FLANGEWAYS TON	LEVEL BINDER (H.M.) TON	AGG WEDGE SHLDR TY B TON
206+23.70 TO 238+35	3211.3	26	9277	779	390		9277		22	1206	18.6		4.6	
238+35 TO 328+02.58	8967.58	26	25906	2176	1088	25906				3368	51.8		13	340
328+02.58 TO 328+62.58	60	26	173	15	7	87		87	14	22	0.3		0.1	2
TOTAL				2970	1485	25993	9277	87	36	4596	70.7	10.7	17.7	342

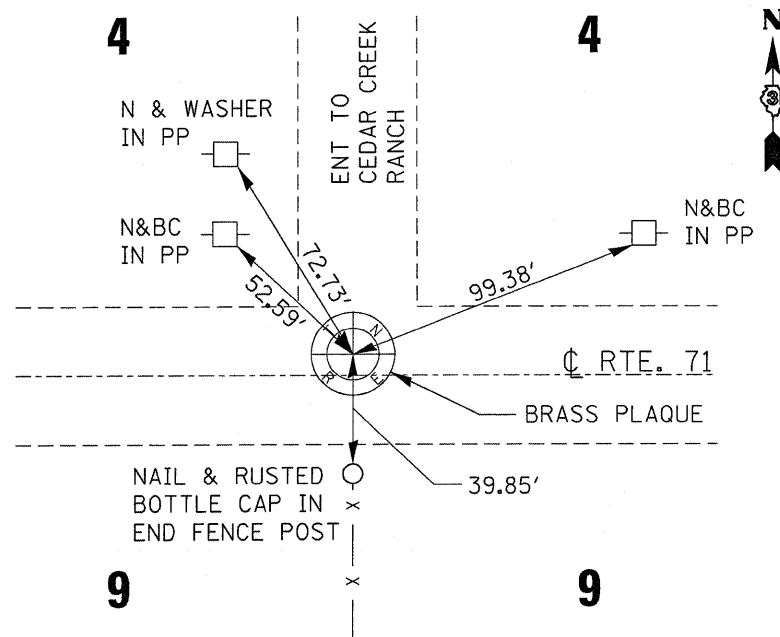
PAVEMENT MARKING SCHEDULE						
LOCATION	LENGTH	PAINT		PAINT	RAISED REFLECTIVE PVMT MARK	RAISED REFLECTIVE PVMT MARK REMOVAL
		PVMT MARKING		PVMT MARKING		
		WHITE 4" FOOT	YELLOW 4" FOOT	YELLOW 6" FOOT	EACH	EACH
206+23.70 TO 213+00	676.3		1353		9	9
213+00 TO 221+00	800		800	200	11	11
221+00 TO 237+75	1675			419	22	22
237+75 TO 328+62.58	9087.58	18175	80	2272	115	115
<b>SUBTOTAL</b>		18175	2233	2891	157	157
<b>TOTAL</b>		20408		2891	157	157

\* PROPOSED NO PASSING ZONES SHALL BE STRIPED AS EXISTING.

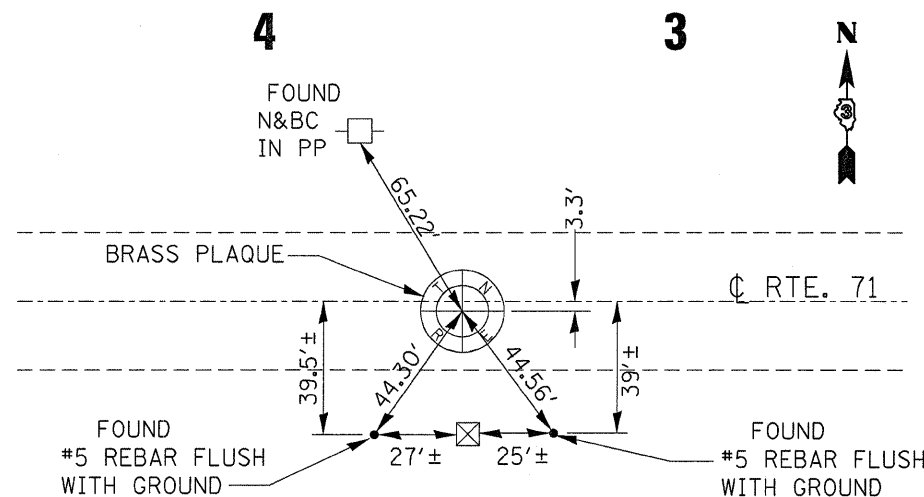
TEMPORARY PAVEMENT MARKING SCHEDULE				
LOCATION	LENGTH	TEMPORARY PVMT MARKING		TEMPORARY PVMT MARKING
		WHITE 4" FOOT	YELLOW 4" FOOT	YELLOW 6" FOOT
		206+23.70 TO 213+00	676.3	
213+00 TO 221+00	800		800	200
221+00 TO 237+75	1675			419
237+75 TO 328+62.58	9087.58	18175	80	2272
<b>SUBTOTAL</b>		18175	2233	2891
<b>TOTAL</b>		20408		2891

SHORT TERM MARKING SCHEDULE			
LOCATION	LENGTH	SHORT-TERM PAVEMENT MARKING	WORK ZONE PVMT MARKING REMOVAL
		YELLOW	SQ FT
		FOOT	
206+23.70 TO 213+00	676.3	203	23
213+00 TO 221+00	800	240	27
221+00 TO 237+75	1675	503	56
237+75 TO 328+62.58	9087.58	2726	303
<b>TOTAL</b>		3672	409

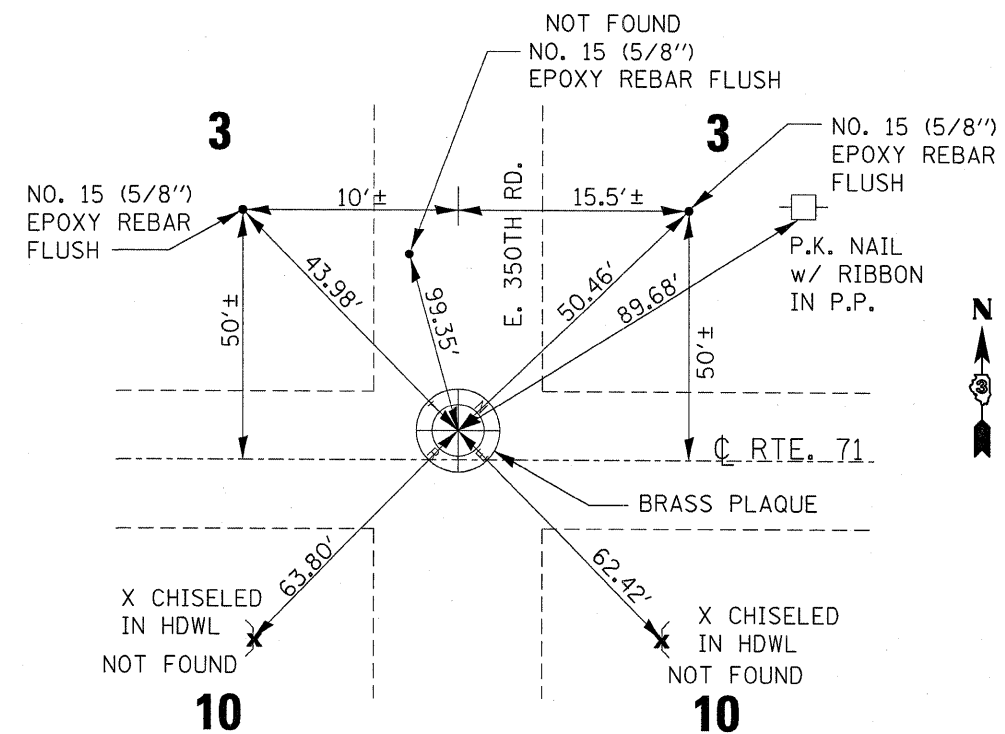
SEEDING SCHEDULE								
LOCATION	SIDE	SEEDING	FURN	EROSION	NIT	PHOS	POT	
		CL 2	EXC	CONTROL	FERT	FERT	FERT	
		ACRE	CU YD	BLANKET	NUT	NUT	NUT	
				SQ YD	LB	LB	LB	
FIRST ST.	238+60	LT	0.01	1.5	52	0.9	0.9	0.9
EAST 275TH ROAD	263+10.5	LT	0.01	1.5	52	0.9	0.9	0.9
EAST 275TH ROAD	263+10.5	RT	0.01	1.5	52	0.9	0.9	0.9
EAST 350TH ROAD	303+44.5	RT	0.01	1.5	52	0.9	0.9	0.9
EAST 350TH ROAD	303+44.6	RT	0.01	1.5	52	0.9	0.9	0.9
<b>TOTAL</b>			0.05	7.5	260	4.5	4.5	4.5



**TIE #1**



**TIE #2**



**TIE #3**

	STATION	DESCRIPTION	EXIST MONUMENT TYPE	PROP MONUMENT TYPE	MONUMENT RECORD TO BE RECORDED	RESPONSIBILITY
TIE #1	N/A	SW COR SE 1/4 SEC 4-32-1	PLAQUE	TYPE 1, PLAQUE	NO	1
TIE #2	N/A	SW COR SE 1/4 SEC 3-32-1	PLAQUE	TYPE 1, PLAQUE	NO	1
TIE #3	N/A	SW COR SEC 3-32-1	PLAQUE	TYPE 1, PLAQUE	NO	1

NOTE: FOR ALL MONUMENT LOCATIONS, SEE TIE SKETCHES

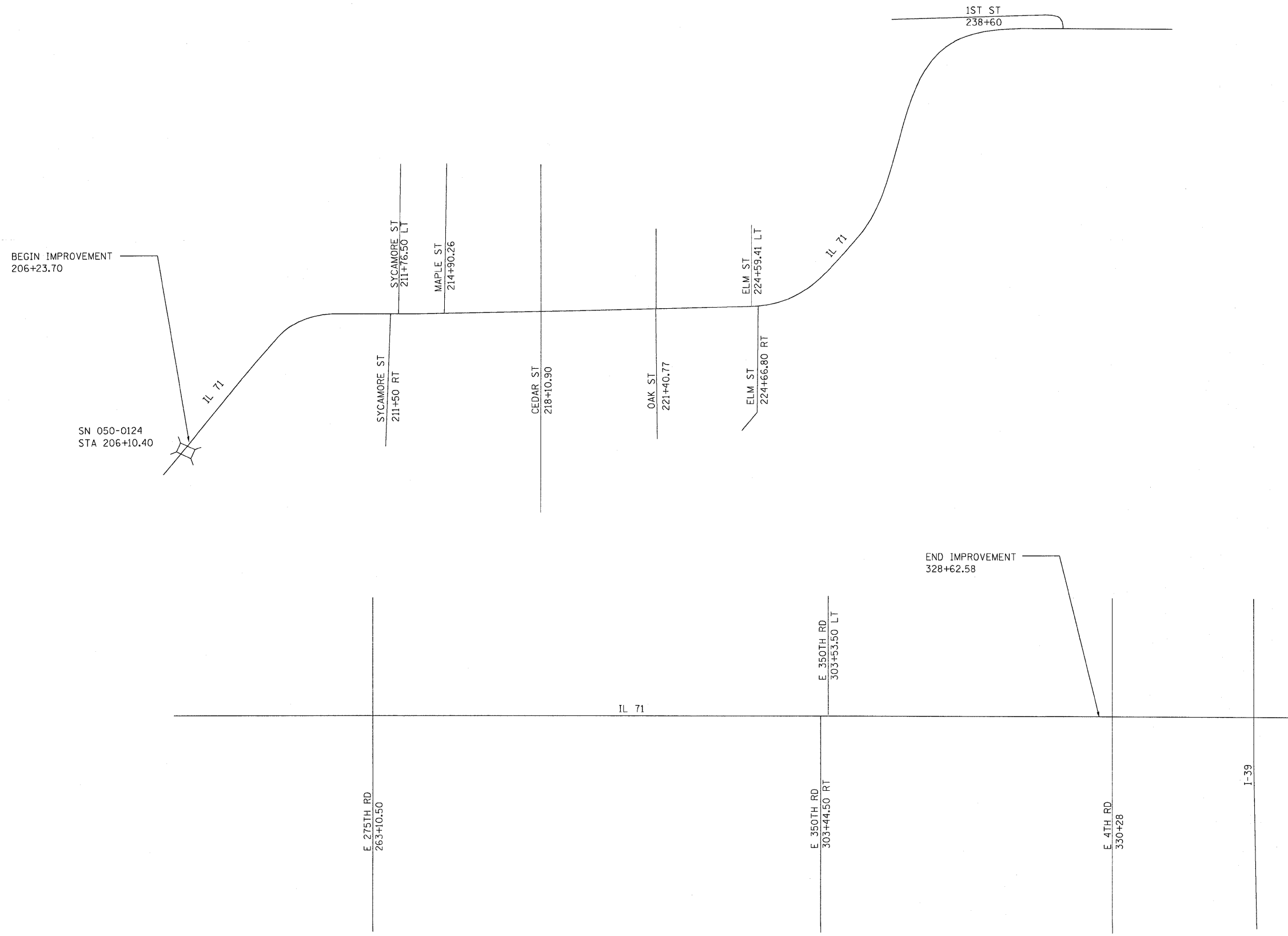
- 1) RESIDENT TO RE-ESTABLISH MONUMENT
- 2) RESIDENT TO RE-ESTABLISH MONUMENT AND FURNISH TIE SKETCHES TO D-3 PLATS AND PLANS
- 3) PROFESSIONAL LAND SURVEYOR TO RE-ESTABLISH MONUMENT, RECORD NEW MONUMENT RECORD AND PROVIDE COPY TO D-3 PLATS AND PLANS (PAY ITEM REQUIRED)

FILE NAME =	USER NAME = carpenterdj	DESIGNED -	REVISED -
ca:\pwork\pwidot\CARPENTERDJ\d0169243	D366999-shd-details.dgn	DRAWN -	REVISED -
	PLOT SCALE = 50,0000' / IN.	CHECKED -	REVISED -
	PLOT DATE = Jan 21, 2010 - 07:15:43 AM	DATE -	REVISED -

**STATE OF ILLINOIS  
DEPARTMENT OF TRANSPORTATION**

<b>TIE POINTS</b>			
SCALE: _____	SHEET NO. ____ OF ____ SHEETS	STA. _____ TO STA. _____	

F.A.P. RTE.	SECTION	COUNTY	TOTAL SHEETS	SHEET NO.
619	(103)RS-3	LASALLE	13	7
CONTRACT NO. 66999			ILLINOIS FED. AID PROJECT	



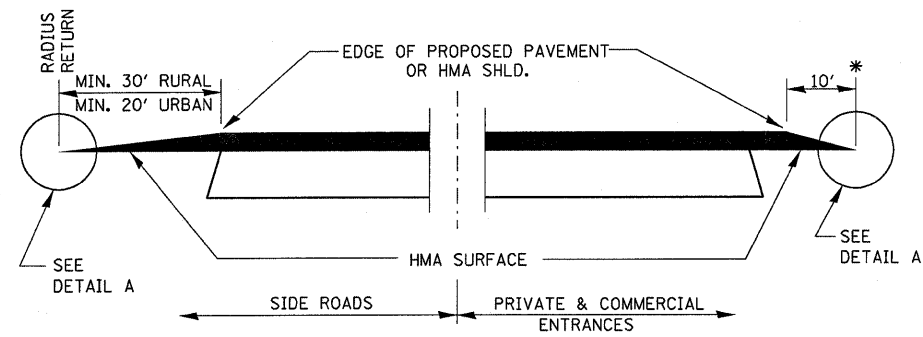
FILE NAME =	USER NAME = carpenterdj	DESIGNED -	REVISIED -
cr\pwork\p\WIDOT\CARPENTERDJ\d8169243	0366999-shd-details.DGN	DRAWN -	REVISIED -
	PLOT SCALE = 50.0000' / IN.	CHECKED -	REVISIED -
	PLOT DATE = Jan 21, 2010 - 07:15:32 AM	DATE -	REVISIED -

**STATE OF ILLINOIS  
DEPARTMENT OF TRANSPORTATION**

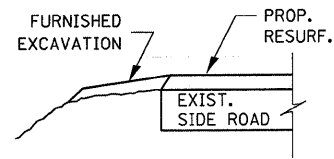
<b>PROJECT LAYOUT</b>			
SCALE: _____	SHEET NO. ____ OF ____ SHEETS	STA. _____	TO STA. _____

F.A.P. RTE.	SECTION	COUNTY	TOTAL SHEETS	SHEET NO.
619	(103)RS-3	LASALLE	13	8
				<b>CONTRACT NO. 66999</b>
ILLINOIS FED. AID PROJECT				



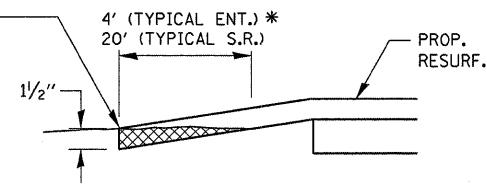


**SECTION A-A**  
**DETAILS AT ENTRANCES & SIDE ROADS**

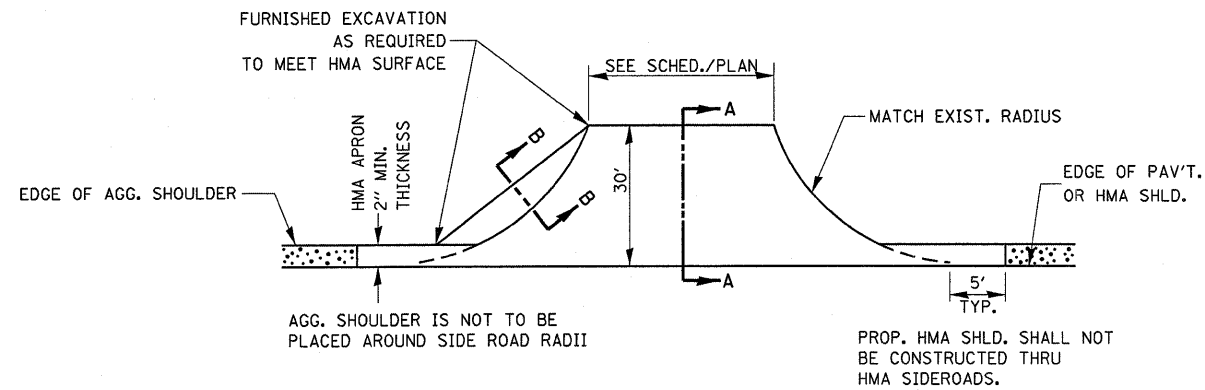


**SECTION B-B**

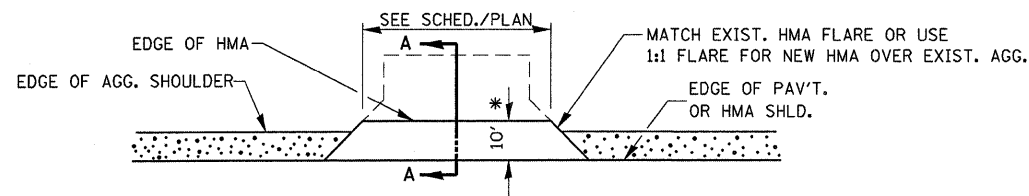
THE COST OF REMOVAL AT EXISTING HMA OR P.C.C. LOCATIONS SHALL BE PAID FOR PER SQ. YD. BY THE APPROPRIATE PAY ITEM. REMOVAL AT THE EXISTING AGG. LOCATIONS SHALL BE INCIDENTAL TO THE HMA. A-3 LOCATIONS SHALL BE FEATHER TAPERED.



**DETAIL A**



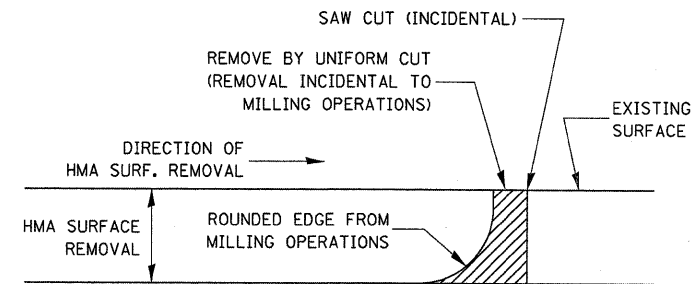
**PLAN AT SIDE ROADS**



**PLAN AT PRIVATE & COMMERCIAL ENTRANCES**

(DO NOT RESURFACE FIELD ENTRANCES)

\* PROPOSED HMA RESURFACING AT PUBLIC EDUCATIONAL FACILITY ENTRANCES SHALL BE EXTENDED TO THE RIGHT-OF-WAY LIMITS.



NOTE:

WHEN MILLING OPERATIONS PRODUCE A ROUNDED EDGE, THEN A SAW CUT SHALL BE USED TO MANUFACTURE A PERPENDICULAR EDGE AS SHOWN IN THE DETAIL. THE ENGINEER SHALL BE THE SOLE JUDGE CONCERNING THE USE OF THIS DETAIL.

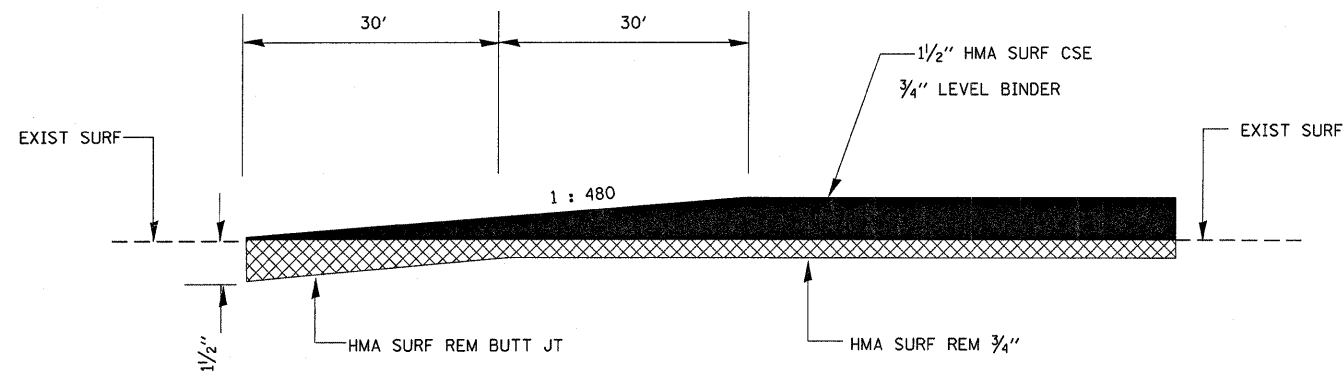
**HMA DETAIL AT BUTT JOINTS**

FILE NAME =	USER NAME = carpenterdj	DESIGNED -	REVISED -
c:\pwork\PIWID01\CARPENTERJ\08169243	0366999-shd-details.DGN	DRAWN -	REVISED -
	PLOT SCALE = 50,0000' / IN.	CHECKED -	REVISED -
	PLOT DATE = Jan 21, 2010 - 07:15:23 AM	DATE -	REVISED -

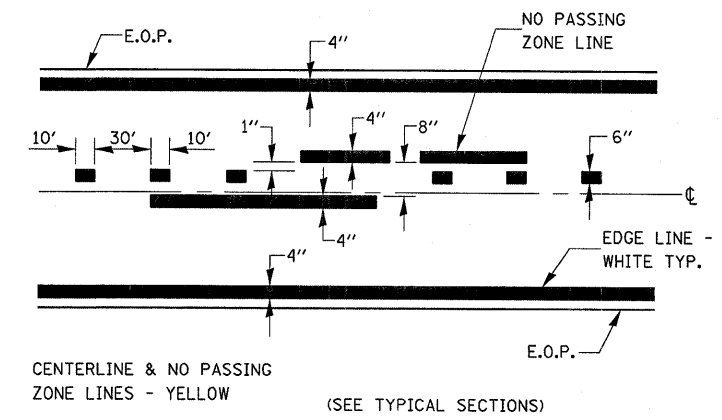
**STATE OF ILLINOIS**  
**DEPARTMENT OF TRANSPORTATION**

<b>DETAILS</b>			
SCALE: _____	SHEET NO. _____ OF _____ SHEETS	STA. _____ TO STA. _____	

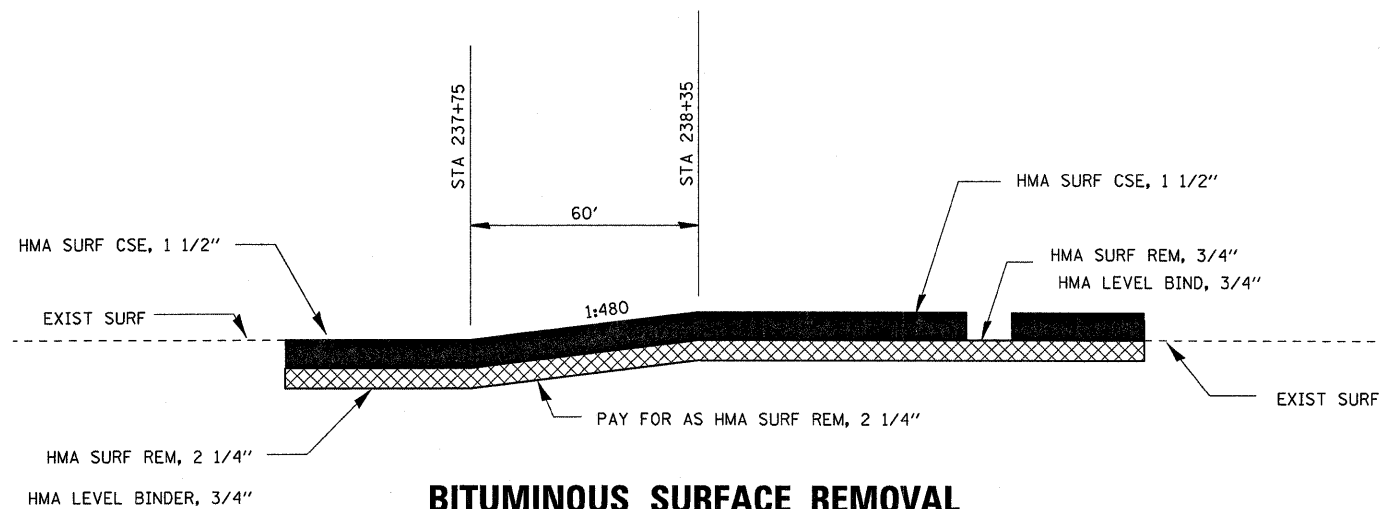
F.A.P. RTE.	SECTION	COUNTY	TOTAL SHEETS	SHEET NO.
619	(103)RS-3	LASALLE	13	9
CONTRACT NO. 66999				
ILLINOIS FED. AID PROJECT				



**HMA SURFACE REMOVAL BUTT JOINT**



**PAVEMENT MARKING**



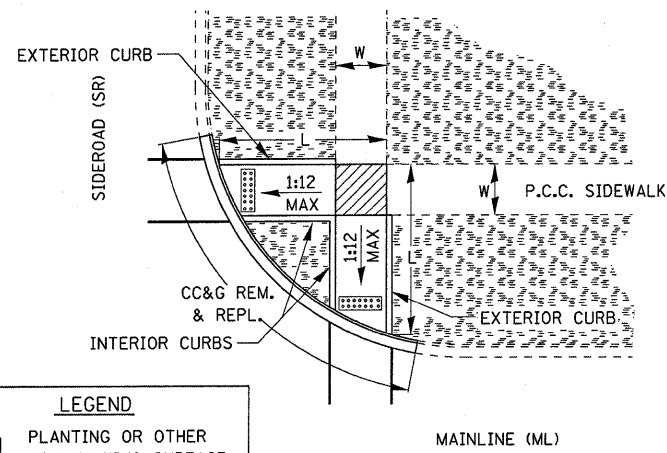
**BITUMINOUS SURFACE REMOVAL TRANSITION**

FILE NAME =	USER NAME = carpenterdj	DESIGNED -	REVISED -
ca:\pw\work\PWIDOT\CARPENTERDJ\d0169243	0366999-sht-details.DGN	DRAWN -	REVISED -
	PLOT SCALE = 50.0000' / IN.	CHECKED -	REVISED -
	PLOT DATE = Jan 21, 2010 - 07:15:14 AM	DATE -	REVISED -

**STATE OF ILLINOIS  
DEPARTMENT OF TRANSPORTATION**

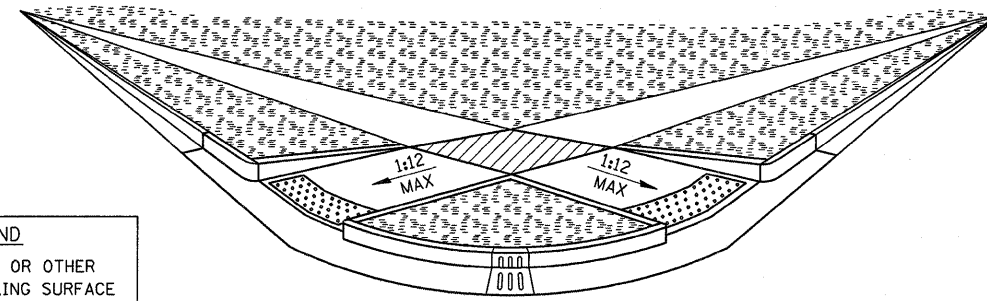
<b>DETAILS</b>			
SCALE: _____	SHEET NO. ____ OF ____ SHEETS	STA. _____	TO STA. _____

F.A.P. RTE.	SECTION	COUNTY	TOTAL SHEETS	SHEET NO.
619	(103)RS-3	LASALLE	13	10
CONTRACT NO. 66999				
ILLINOIS FED. AID PROJECT				



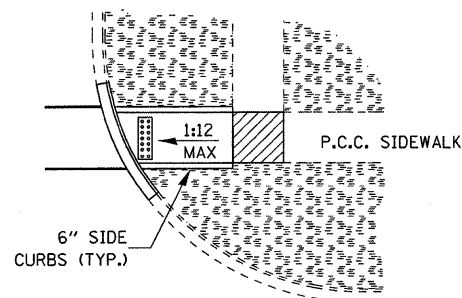
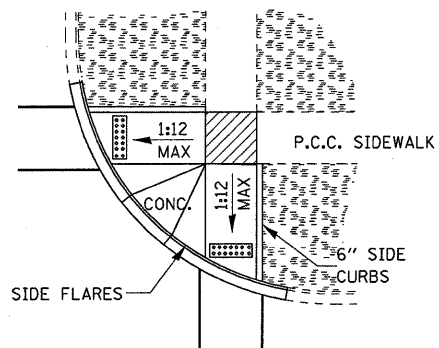
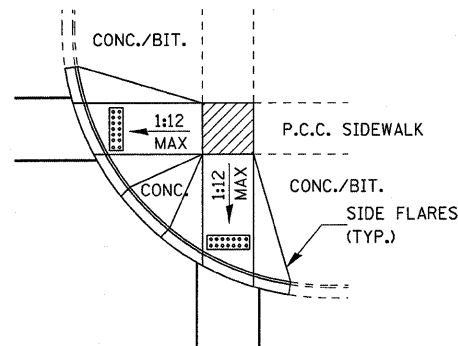
- LEGEND**
- PLANTING OR OTHER NON-WALKING SURFACE
  - SLOPE = 2% MAX.
  - DETECTABLE WARNING

**ADA SIDEWALK ACCESSIBILITY RAMPS  
METHOD 1**



- LEGEND**
- PLANTING OR OTHER NON-WALKING SURFACE
  - SLOPE = 2% MAX.
  - DETECTABLE WARNING

**ADA SIDEWALK ACCESSIBILITY RAMPS  
METHOD 1 PERSPECTIVE WITH SIDE CURBS**



- LEGEND**
- PLANTING OR OTHER NON-WALKING SURFACE
  - SLOPE = 2% MAX.
  - DETECTABLE WARNING

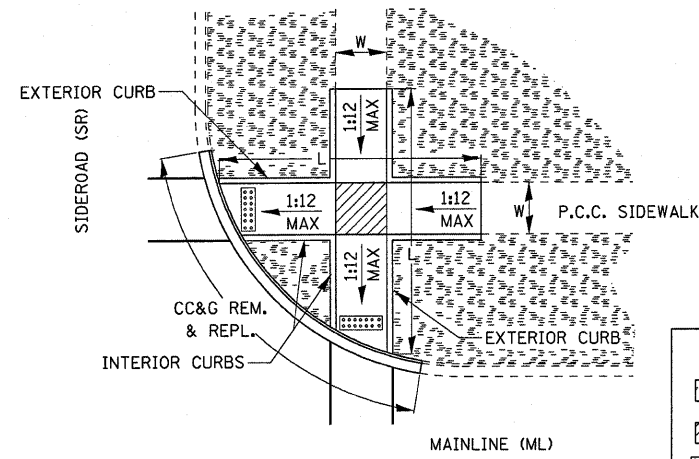
**TYPICAL CURB APPLICATIONS FOR METHOD 1**

FILE NAME =	USER NAME = carpenterdj	DESIGNED -	REVISED -
c:\pwork\PWID01\CARPENTERDJ\d0169243	0366999-shr-details.DGN	DRAWN -	REVISED -
	PLOT SCALE = 50.0000' / IN.	CHECKED -	REVISED -
	PLOT DATE = Jan 21, 2010 - 07:15:05 AM	DATE -	REVISED -

**STATE OF ILLINOIS  
DEPARTMENT OF TRANSPORTATION**

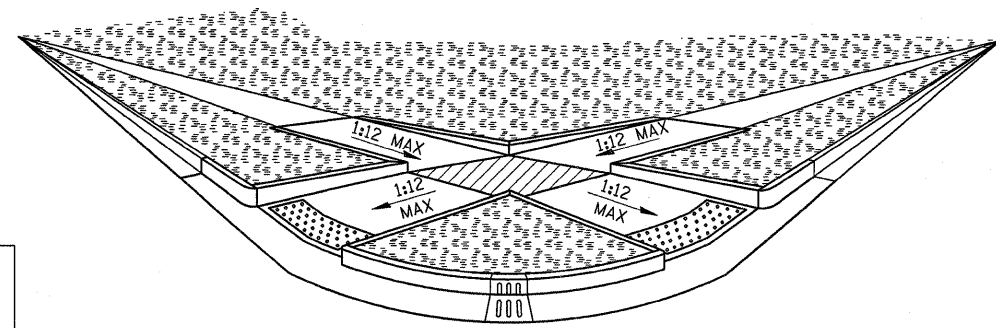
<b>DETAILS</b>	
SCALE: _____	SHEET NO. ___ OF ___ SHEETS
STA. _____ TO STA. _____	

F.A.P. RTE.	SECTION	COUNTY	TOTAL SHEETS	SHEET NO.
619	(103)RS-3	LASALLE	13	11
CONTRACT NO. 66999				
ILLINOIS FED. AID PROJECT				



**LEGEND**

	PLANTING OR OTHER NON-WALKING SURFACE
	SLOPE = 2% MAX.
	DETECTABLE WARNING

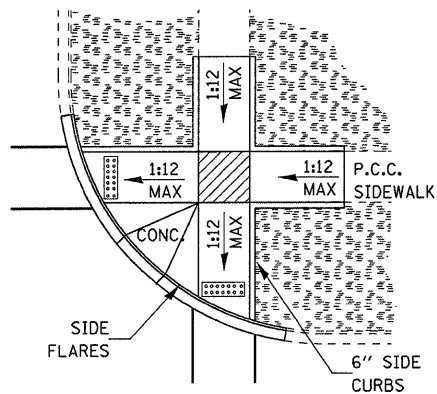
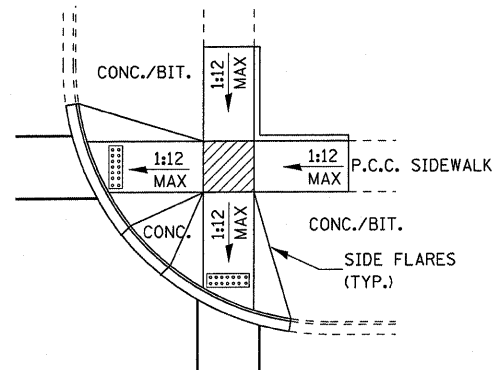


**LEGEND**

	PLANTING OR OTHER NON-WALKING SURFACE
	SLOPE = 2% MAX.
	DETECTABLE WARNING

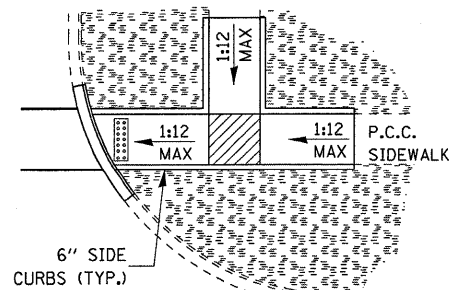
**ADA SIDEWALK ACCESSIBILITY RAMPS  
METHOD 2**

**ADA SIDEWALK ACCESSIBILITY RAMPS  
METHOD 2 PERSPECTIVE WITH SIDE CURBS**



**LEGEND**

	PLANTING OR OTHER NON-WALKING SURFACE
	SLOPE = 2% MAX.
	DETECTABLE WARNING



**TYPICAL CURB APPLICATIONS FOR METHOD 2**

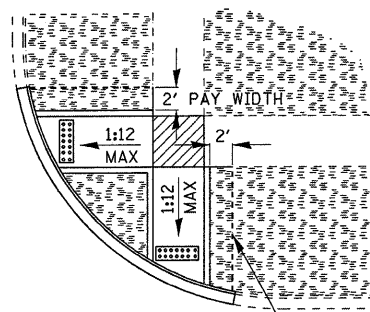
FILE NAME =	USER NAME = carpenterdj	DESIGNED -	REVISD -
cs\pwwork\pwidot\carpenterdj\d0169243	0386999-sht-details.DGN	DRAWN -	REVISD -
	PLOT SCALE = 50.0000' / IN.	CHECKED -	REVISD -
	PLOT DATE = Jan 21, 2010 - 07:14:51 AM	DATE -	REVISD -

**STATE OF ILLINOIS  
DEPARTMENT OF TRANSPORTATION**

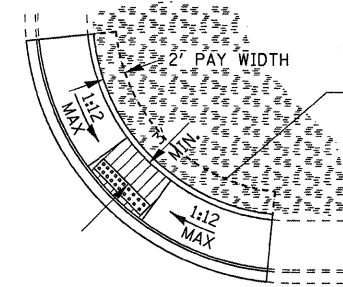
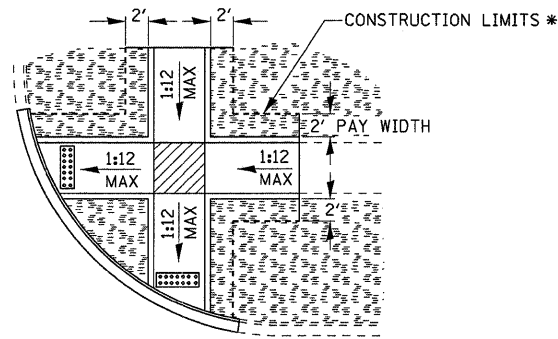
**DETAILS**

SCALE: _____	SHEET NO. ___ OF ___ SHEETS	STA. _____ TO STA. _____
--------------	-----------------------------	--------------------------

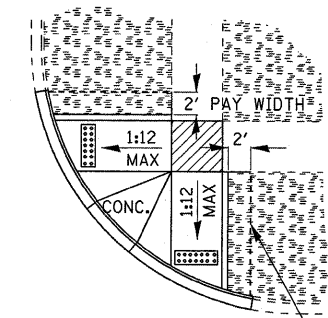
F.A.P. RTE.	SECTION	COUNTY	TOTAL SHEETS	SHEET NO.
619	(103)RS-3	LASALLE	13	12
CONTRACT NO. 66999				
ILLINOIS FED. AID PROJECT				



CONSTRUCTION LIMITS \*



CONSTRUCTION LIMITS \*



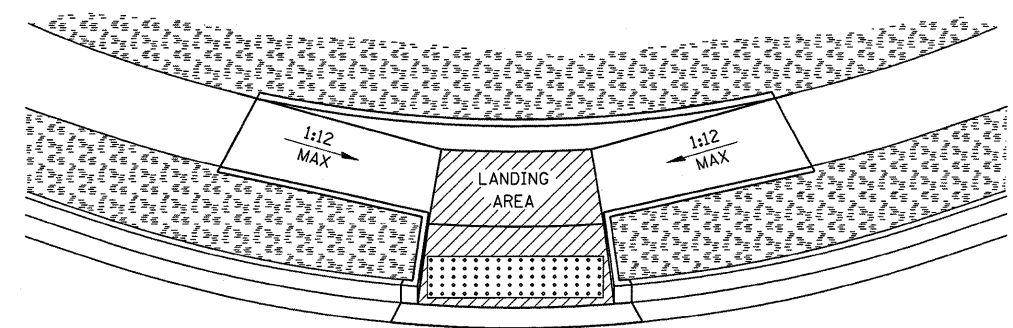
CONSTRUCTION LIMITS \*

**LEGEND**

	PLANTING OR OTHER NON-WALKING SURFACE
	SLOPE = 2% MAX.
	DETECTABLE WARNING

\* PAY FOR SOD IN PLANTING AREAS OR REMOVE AND REPLACE FOR OTHER SURFACES

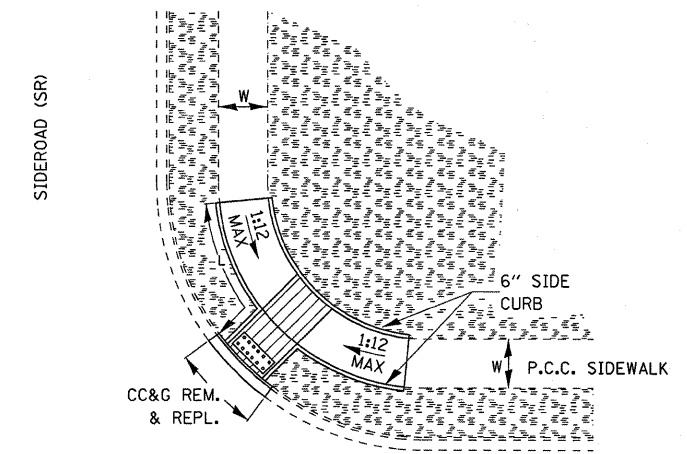
**ADA SIDEWALK ACCESSIBILITY RAMPS  
TYPICAL SODDING DETAILS FOR SIDEWALK RAMPS**



**LEGEND**

	PLANTING OR OTHER NON-WALKING SURFACE
	SLOPE = 2% MAX.
	DETECTABLE WARNING

**ADA SIDEWALK ACCESSIBILITY RAMPS  
METHOD 5 PERSPECTIVE**



**LEGEND**

	PLANTING OR OTHER NON-WALKING SURFACE
	SLOPE = 2% MAX.
	DETECTABLE WARNING

**ADA SIDEWALK ACCESSIBILITY RAMPS  
METHOD 5**

FILE NAME =	USER NAME = carpenterdj	DESIGNED -	REVISD -
gs:\pwwork\PM\DOT\CARPENTERDJ\d0169243	0366999-shit-details.DGN	DRAWN -	REVISD -
	PLOT SCALE = 50.0000' / IN.	CHECKED -	REVISD -
	PLOT DATE = Jan 21, 2010 - 07:14:33 AM	DATE -	REVISD -

STATE OF ILLINOIS  
DEPARTMENT OF TRANSPORTATION

**DETAILS**

SCALE: \_\_\_\_\_ SHEET NO. \_\_\_ OF \_\_\_ SHEETS STA. \_\_\_\_\_ TO STA. \_\_\_\_\_

F.A.P. RTE.	SECTION	COUNTY	TOTAL SHEETS	SHEET NO.
619	(103)RS-3	LASALLE	13	13
CONTRACT NO. 66999				
ILLINOIS FED. AID PROJECT				