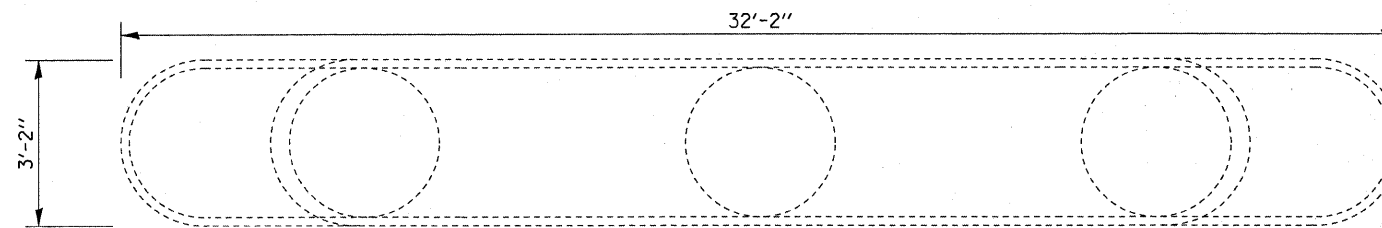
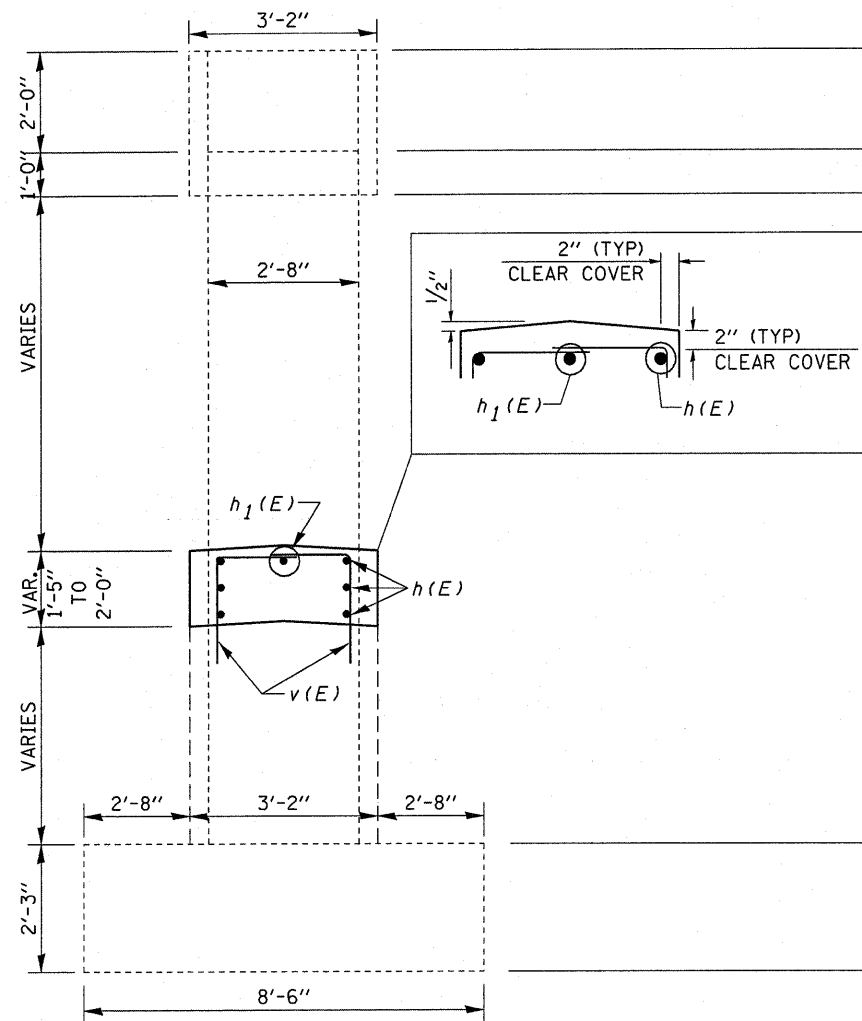


NOTE:

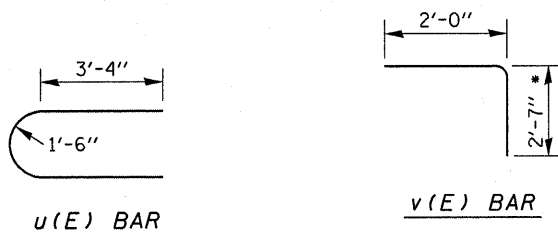
1. DRILL AND EPOXY GROUT $v_1(E)$ BARS IN 9" (MIN.) DRILLED HOLES ACCORDING TO SECTION 584 OF THE STANDARD SPECIFICATIONS.
2. ADJUST THE LOCATION OF $v(E)$ BARS TO AVOID DAMAGING LONGITUDINAL REINFORCEMENT.
3. ALL CRASH WALLS MUST BE A MINIMUM OF 4'-0" AND RAISED A MINIMUM OF 1'-0".
4. MINOR CHIPPING OF LOOSE MATERIAL FROM PREVIOUS EXTENSIONS OR ON EXISTING CRASH WALL SHALL BE DONE BEFORE FORMING UP NEW CRASH WALLS. COST OF THIS WORK INCIDENTAL TO CONCRETE STRUCTURES PAY ITEM.
5. ALL HOLES MADE BY THE REMOVAL OF EXISTING GUARDRAIL SHALL BE PATCHED WITH AN APPROVED NON SHRINK GROUT.
6. ALL EXPOSED EDGES SHALL HAVE A 3/4" CHAMFER.



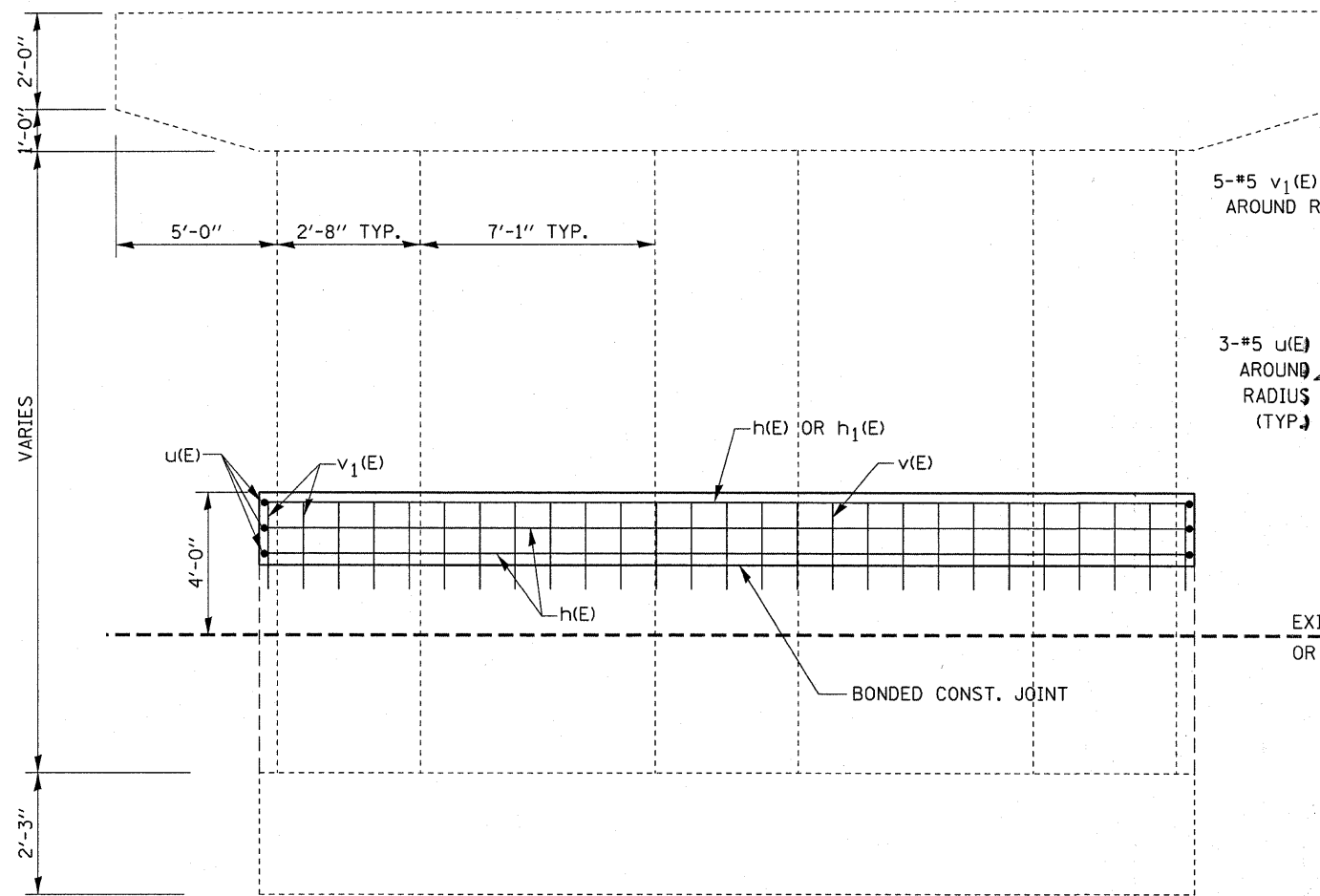
TOP PLAN



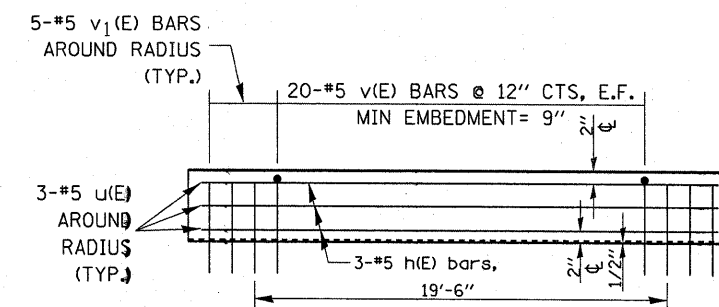
END ELEVATION



* - BARS MAY BE CUT TO LENGTH AS CRASH WALL HEIGHTS VARY FROM 1'-5" TO 2'-0".



ELEVATION



CRASH WALL DETAIL

* - NUMBER OF BARS SHOWN IN THE BILL OF MATERIALS IS FOR ON LOCATION

BAR	• NO	SIZE	LENGTH	SHAPE
h(E)	6	#5	16'-10"	—
h ₁ (E)	2	#5	6'-9"	—
v(E)	40	#5	4'-7"	└
v ₁ (E)	10	#5	2'-7"	—
u(E)	6	#5	11'-1"	┌
ITEM	UNIT	Quantity		
CONCRETE STRUCTURES	CU YDS	68		
REINFORCEMENT BARS, EPOXY COATED	POUNDS	8547		

BILL OF MATERIAL

LOCATIONS	CONC. AND REBAR SCHEDULE (CRASH WALLS)				TOTAL REBAR POUND	TOTAL REBAR POUND	TOTAL REBAR POUND	TOTAL REBAR POUND
	EB CONC CY	MED CONC CY	WB CONC CY	TOTAL CONC CY				
LASALLE COUNTY								
050-0132	2.93	3.91	3.12	9.96	407	407	407	1221
050-0133	2.93	2.74	3.12	8.79	407	407	407	1221
050-0134	3.12	3.91	3.12	10.15	407	407	407	1221
050-0135	2.93	3.32	3.52	9.77	407	407	407	1221
050-0105	3.32	3.52	3.12	9.96	407	407	407	1221
LASALLE CO. SUBTOTAL				48.63				6105
GRUNDY COUNTY								
032-0053	3.12	3.12	3.32	9.56	407	407	407	1221
032-0052	3.12	3.52	3.12	9.76	407	407	407	1221
GRUNDY CO SUBTOTAL				19.32				2442
PROJECT TOTALS				68				8547