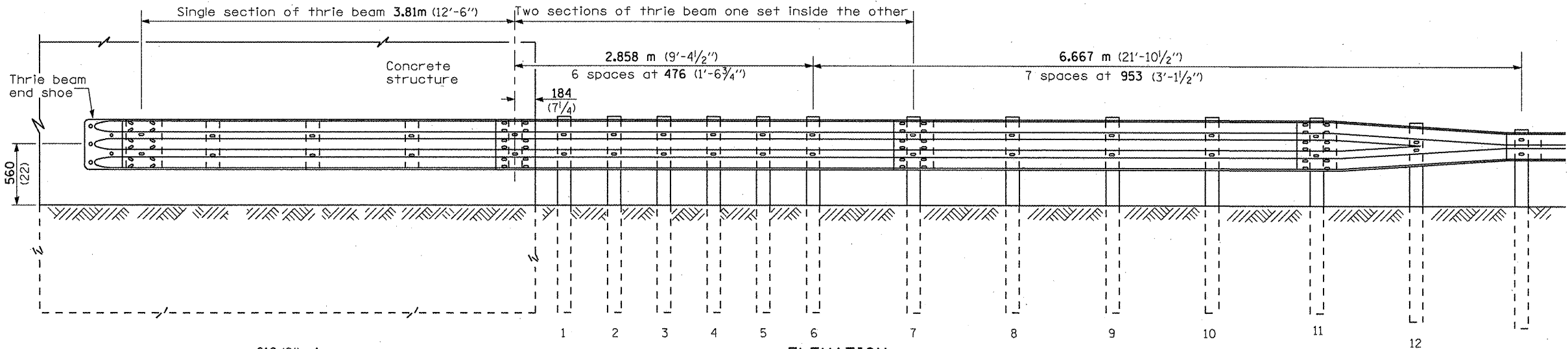


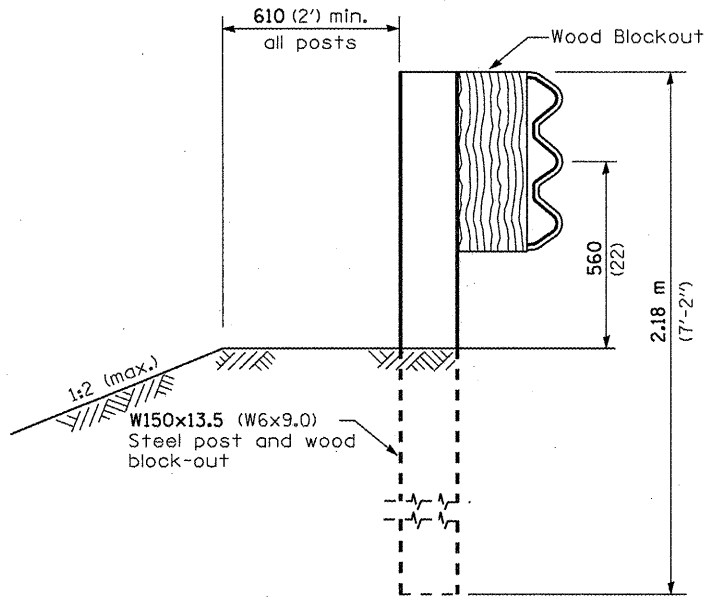
\* With standard washers. After tightening, cut the anchor bolts flush with nuts, and damage the nut to prevent it from loosening.

Note: See wood block details A, B, C. & D

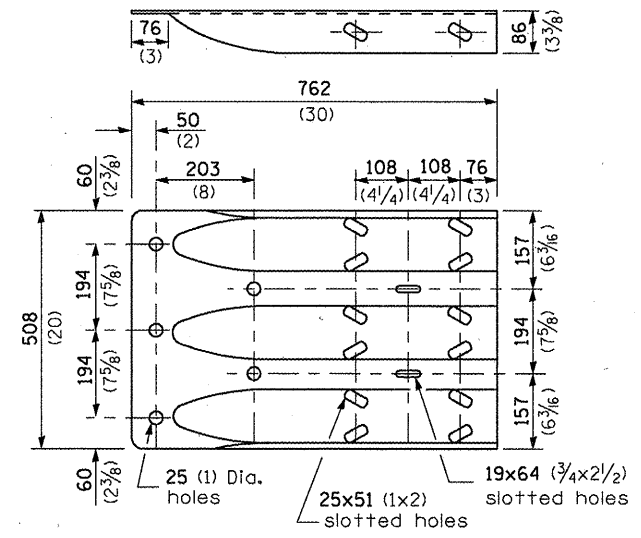
PLAN



ELEVATION



SECTION A-A



THRIE BEAM END SHOE DETAIL

GENERAL NOTES

See Standard 630001 for details of guardrail not shown.

Thrie beam rail shall be bolted to block-out at all posts.

All slope ratios are expressed as units of vertical displacement to units of horizontal displacement (V:H).

All dimensions are in millimeters (inches) unless otherwise shown.

FILE NAME =				USER NAME = schwanke				DESIGNED -				REVISED -				STATE OF ILLINOIS DEPARTMENT OF TRANSPORTATION				PRE-MGS EFFECTIVE 4-1-06				F.A. RTE.		SECTION		COUNTY		TOTAL SHEETS		SHEET NO.	
cr\pwork\p\WIDOT\SCHWANKER\0184951\366A25-sht-details.dgn				PLOT SCALE = 100.0000' / IN.				DRAWN -				REVISED -								TRAFFIC BARRIER TERMINAL, TYPE 6B				VAR.		VAR.		36		32			
PLOT DATE = Feb 17, 2010 - 03:53:54 PM				CHECKED -				REVISED -				STANDARD 631033-01								SCALE:		SHEET NO. OF SHEETS		STA. TO STA.		Sheet 1 of 2		CONTRACT NO. 66A25					
				DATE -				REVISED -																									

D-3 HIGHWAY DAMAGE REPAIR 2010