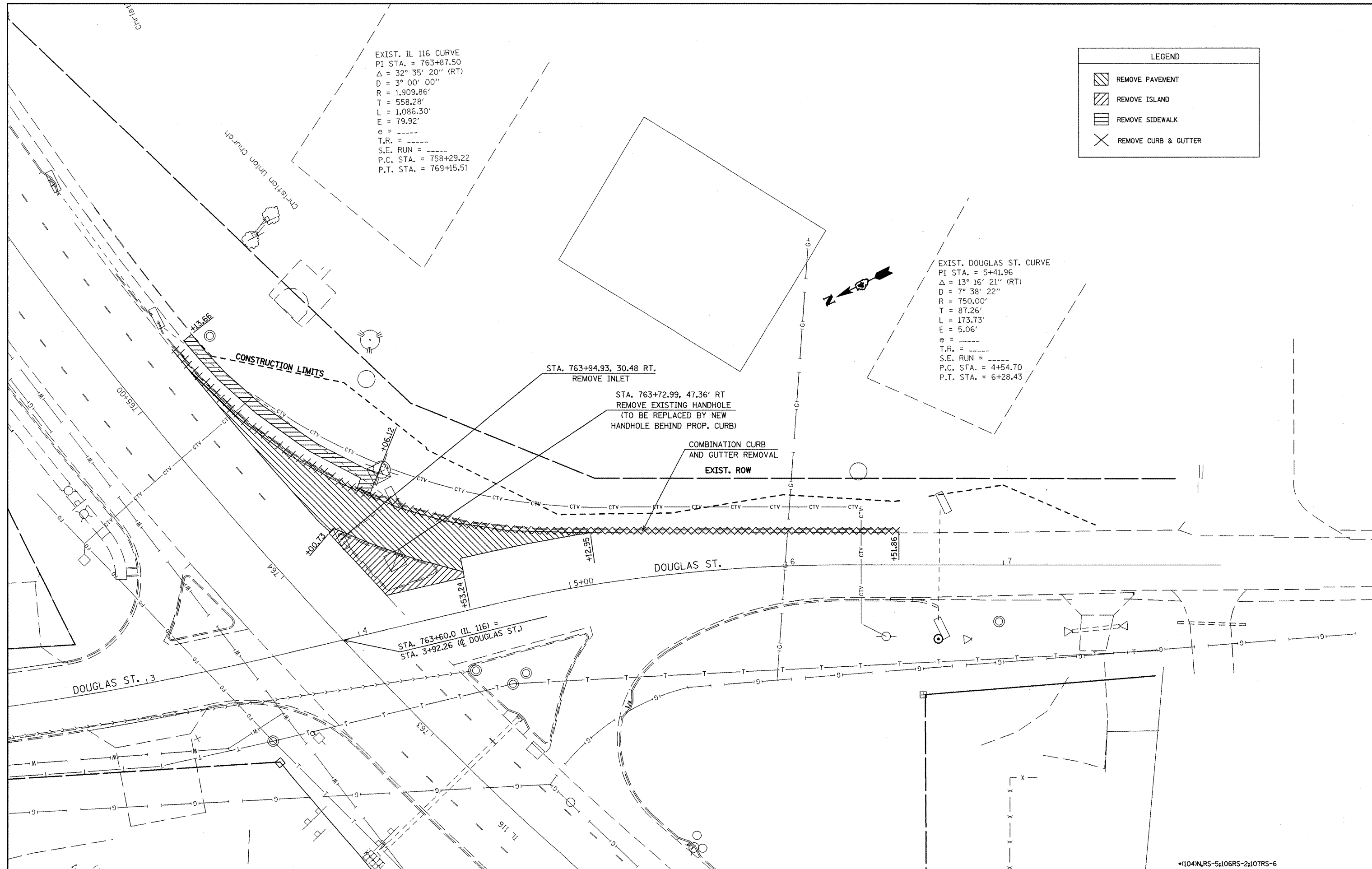


EXIST. IL 116 CURVE
 PI STA. = 763+87.50
 $\Delta = 32^\circ 35' 20''$ (RT)
 $D = 3^\circ 00' 00''$
 $R = 1,909.86'$
 $T = 558.28'$
 $L = 1,086.30'$
 $E = 79.92'$
 $e = \text{---}$
 $T.R. = \text{---}$
 $S.E. \text{ RUN} = \text{---}$
 $P.C. \text{ STA.} = 758+29.22$
 $P.T. \text{ STA.} = 769+15.51$

EXIST. DOUGLAS ST. CURVE
 PI STA. = 5+41.96
 $\Delta = 13^\circ 16' 21''$ (RT)
 $D = 7^\circ 38' 22''$
 $R = 750.00'$
 $T = 87.26'$
 $L = 173.73'$
 $E = 5.06'$
 $e = \text{---}$
 $T.R. = \text{---}$
 $S.E. \text{ RUN} = \text{---}$
 $P.C. \text{ STA.} = 4+54.70$
 $P.T. \text{ STA.} = 6+28.43$

LEGEND	
	REMOVE PAVEMENT
	REMOVE ISLAND
	REMOVE SIDEWALK
	REMOVE CURB & GUTTER



STA. 763+60.0 (IL 116) =
 STA. 3+92.26 (DOUGLAS ST.)

FILE NAME =
 D468625-CADD.dgn

USER NAME = dsetzsm
 PLOT SCALE = 48.0000' / IN.
 PLOT DATE = 1/28/2010

DESIGNED - KJH
 DRAWN - JGJ
 CHECKED - KJH
 DATE -

REVISED -
 REVISED -
 REVISED -
 REVISED -

**STATE OF ILLINOIS
 DEPARTMENT OF TRANSPORTATION**

EXISTING AND REMOVAL
 SCALE: SHEET NO. OF SHEETS STA. TO STA.

F.A.P. RTE.	SECTION	COUNTY	TOTAL SHEETS	SHEET NO.
673	.	WOODFORD	03	20
CONTRACT NO. 68625			ILLINOIS FED. AID PROJECT	

*(104)NRS-5;106RS-2;107RS-6