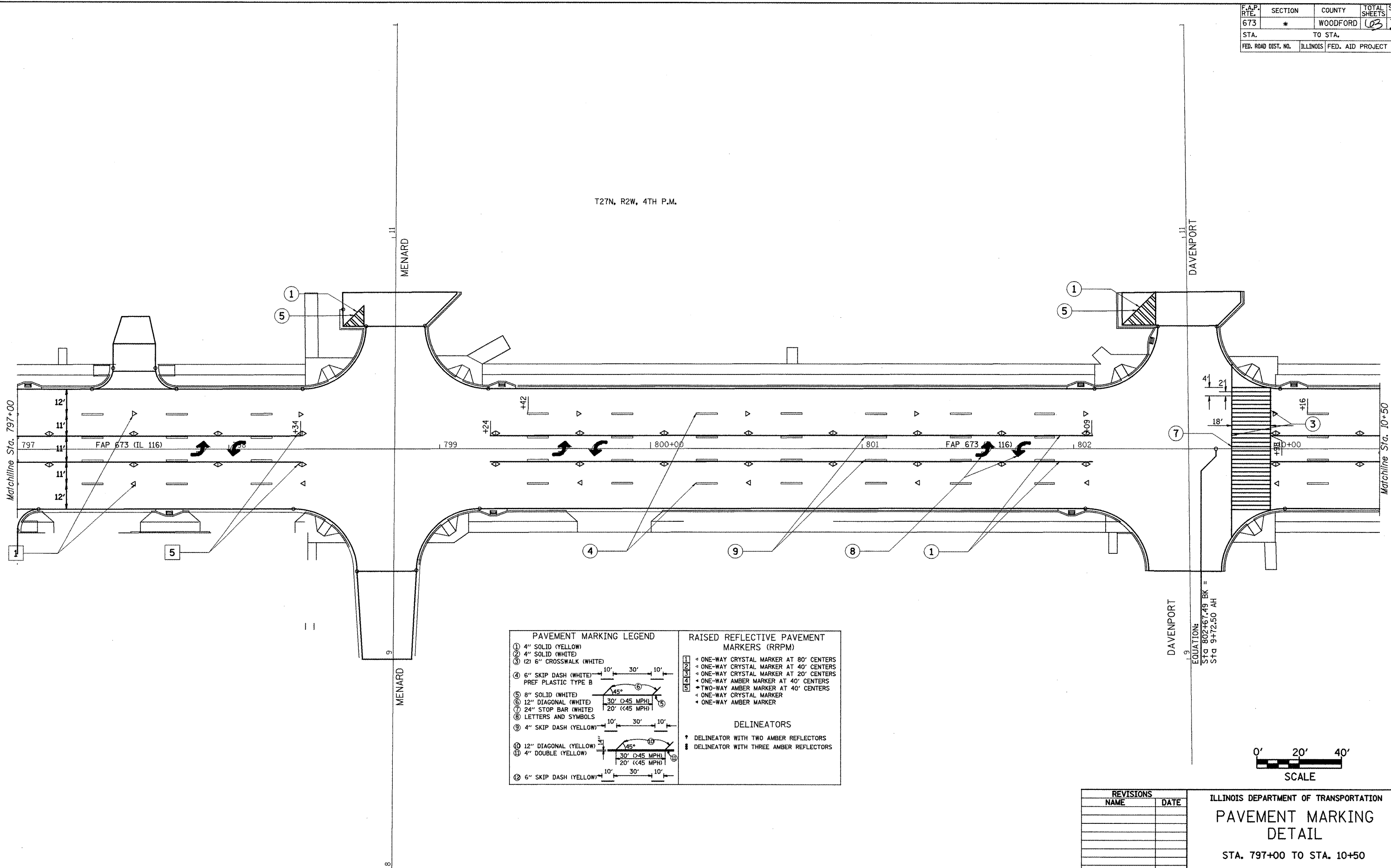
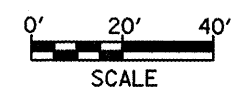


F.A.P. NO.	SECTION	COUNTY	TOTAL SHEETS	SHEET NO.
673	*	WOODFORD	35	35
STA.	TO STA.			
FED. ROAD DIST. NO. ILLINOIS FED. AID PROJECT				

T27N, R2W, 4TH P.M.



PAVEMENT MARKING LEGEND		RAISED REFLECTIVE PAVEMENT MARKERS (RRPM)	
①	4" SOLID (YELLOW)	①	ONE-WAY CRYSTAL MARKER AT 80' CENTERS
②	4" SOLID (WHITE)	②	ONE-WAY CRYSTAL MARKER AT 40' CENTERS
③	(2) 6" CROSSWALK (WHITE)	③	ONE-WAY CRYSTAL MARKER AT 20' CENTERS
④	6" SKIP DASH (WHITE) 10' 30' 10'	④	ONE-WAY AMBER MARKER AT 40' CENTERS
⑤	8" SOLID (WHITE)	⑤	TWO-WAY AMBER MARKER AT 40' CENTERS
⑥	12" DIAGONAL (WHITE) 30' (≥45 MPH)	⑥	ONE-WAY CRYSTAL MARKER
⑦	24" STOP BAR (WHITE) 20' (<45 MPH)	⑦	ONE-WAY AMBER MARKER
⑧	LETTERS AND SYMBOLS		
⑨	4" SKIP DASH (YELLOW) 10' 30' 10'		
⑩	12" DIAGONAL (YELLOW) 30' (≥45 MPH)		
⑪	4" DOUBLE (YELLOW) 20' (<45 MPH)		
⑫	6" SKIP DASH (YELLOW) 10' 30' 10'		
		DELINEATORS	
		†	DELINEATOR WITH TWO AMBER REFLECTORS
		‡	DELINEATOR WITH THREE AMBER REFLECTORS



REVISIONS	
NAME	DATE

ILLINOIS DEPARTMENT OF TRANSPORTATION
**PAVEMENT MARKING
 DETAIL**
 STA. 797+00 TO STA. 10+50
 SCALE: 1" = 20'
 DATE **DATE**
 DRAWN BY CADD
 CHECKED BY

DATE
 DGN-ONLY