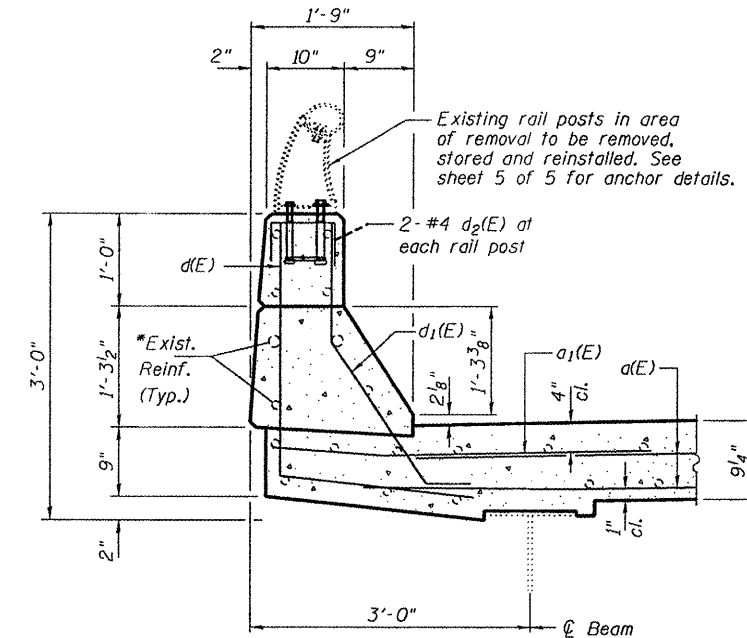
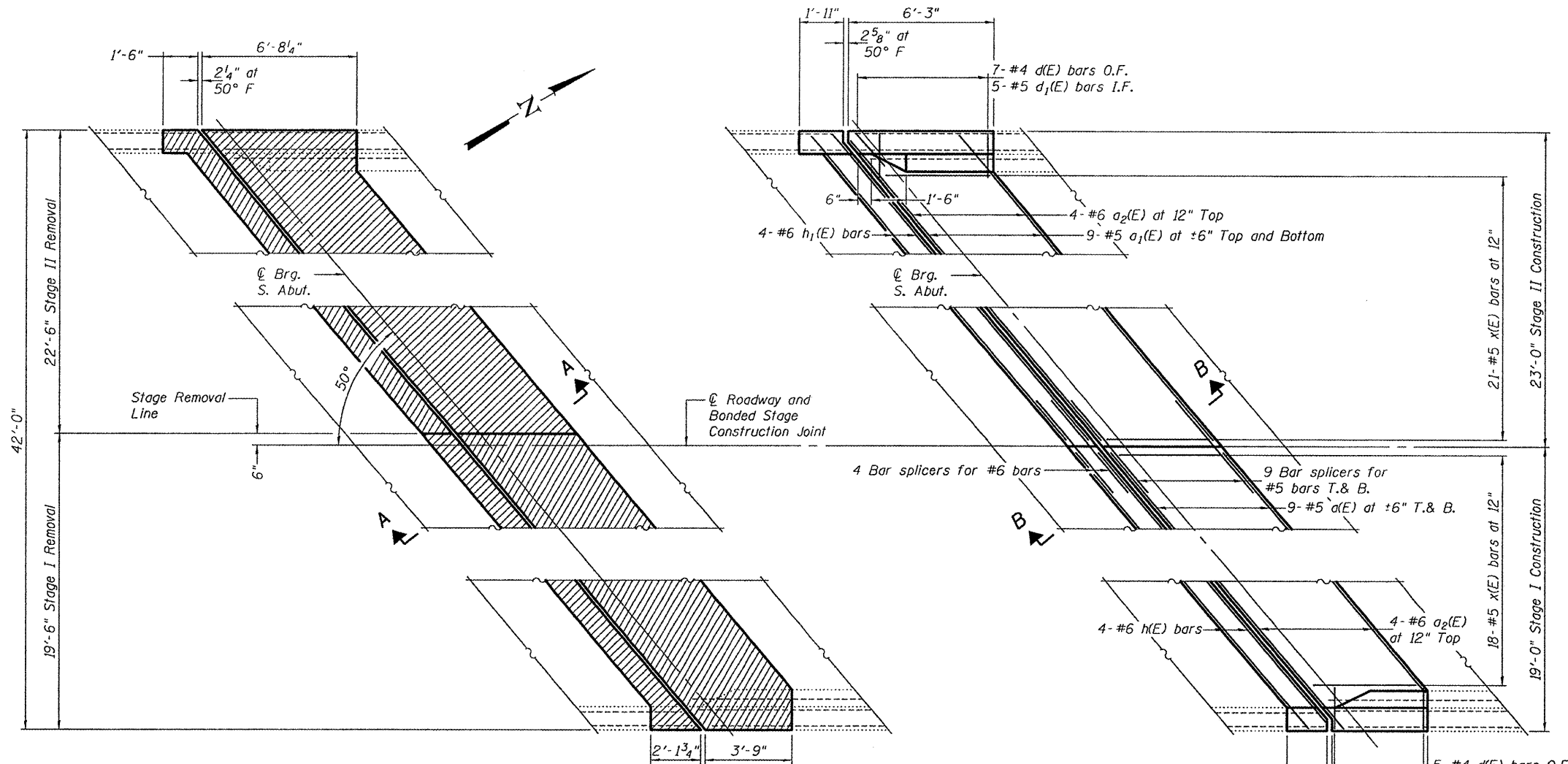
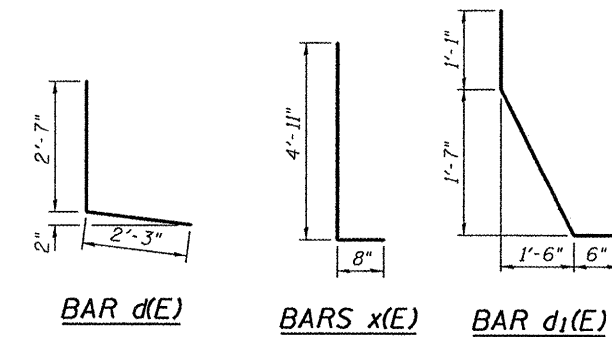


STATE OF ILLINOIS
DEPARTMENT OF TRANSPORTATION



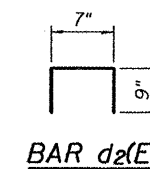
SECTION THRU PARAPET



BAR d(E)

BARS x(E)

BAR d1(E)



BAR d2(E)

BILL OF MATERIAL

Bar	No.	Size	Length	Shape
a(E)	18	#5	23'-3"	—
a1(E)	18	#5	28'-6"	—
a2(E)	8	#6	4'-0"	—
d(E)	12	#4	4'-10"	—
d1(E)	8	#5	3'-9"	—
d2(E)	4	#4	2'-1"	—
h(E)	4	#6	24'-6"	—
h1(E)	4	#6	30'-0"	—
x(E)	39	#5	5'-7"	—
Concrete Removal			Cu. Yd.	12.3
Concrete Superstructure			Cu. Yd.	12.2
Reinforcement Bars, Epoxy Coated			Lbs.	1,560

SOUTH ABUTMENT JOINT DETAILS

SN 090-0110

SHEET NO. 2 5 SHEETS	F.A.P. RTE. 673	SECTION 101RS-3, 102RS-4, 103RS-4, 104RS-7	COUNTY Tazewell	TOTAL SHEETS 60	SHEET NO. 29
	CONTRACT NO. 68920			FED. ROAD DIST. NO. ILLINOIS FED. AID PROJECT	

Notes:
Hatched areas indicate removal.

DESIGNED GGE	March 15, 2010
CHECKED I.J.L.	EXAMINED <i>Carl Krueger</i> ENGINEER OF STRUCTURAL SERVICES
DRAWN Drew Christopher	PASSED <i>Ralph E. Anderson</i> ENGINEER OF BRIDGES AND STRUCTURES
CHECKED GGE I.J.L.	