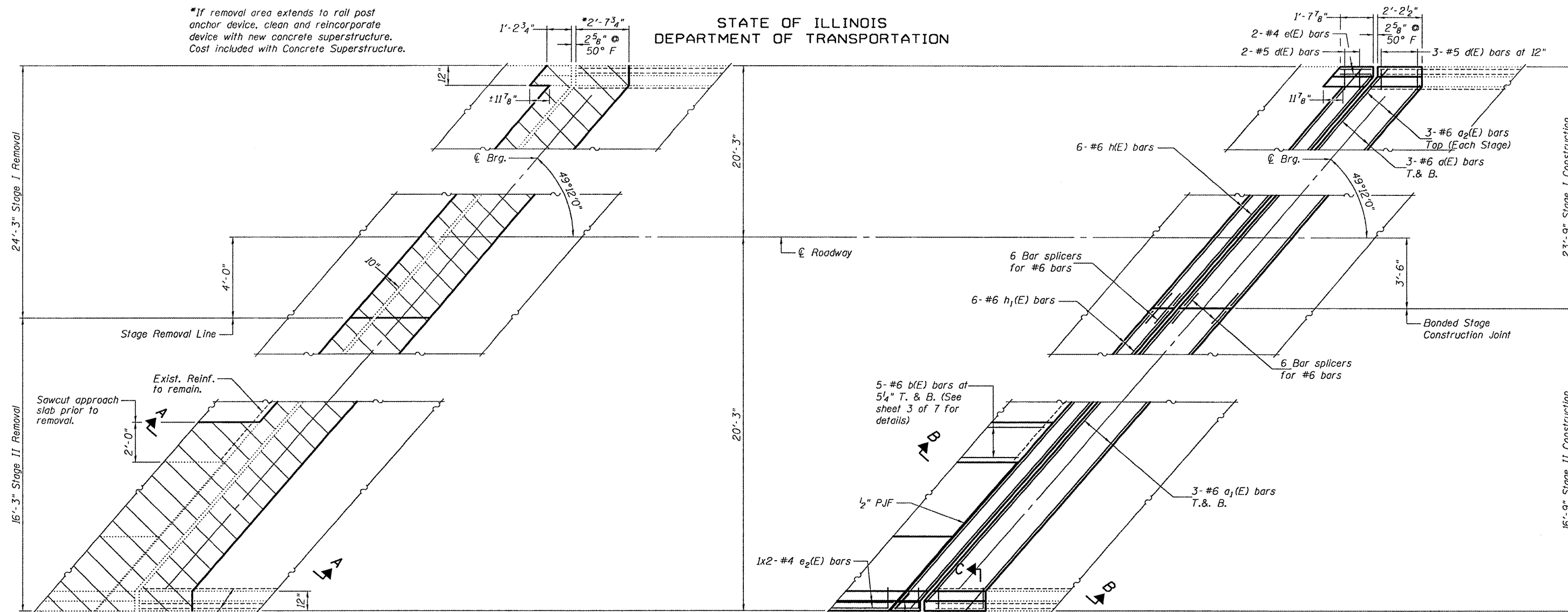
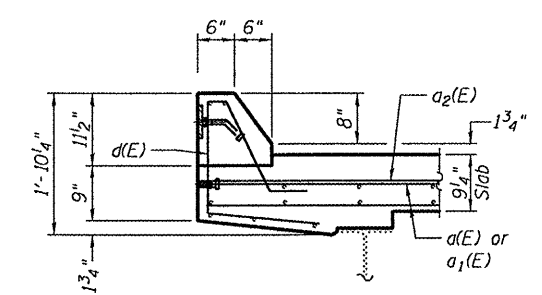


STATE OF ILLINOIS
DEPARTMENT OF TRANSPORTATION

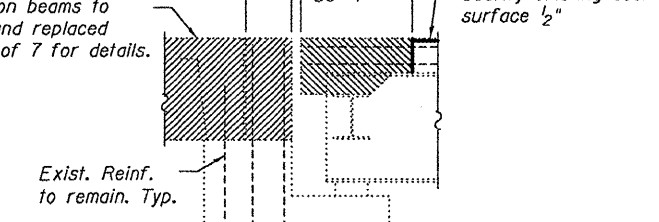
*If removal area extends to rail post anchor device, clean and reincorporate device with new concrete superstructure. Cost included with Concrete Superstructure.



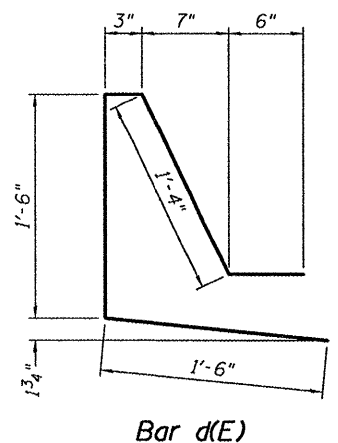
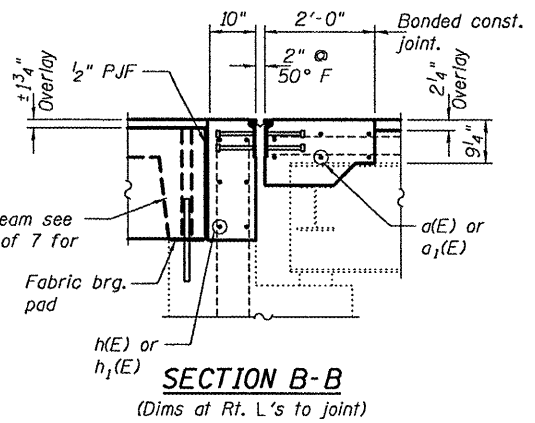
WEST ABUTMENT REMOVAL PLAN
(East Abutment similar by rotation)



Cost of Removal included 10" with Removal of Existing PC Units.



WEST ABUTMENT PLAN
(East Abutment similar by rotation)



BILL OF MATERIAL

Bar	No.	Size	Length	Shape
a(E)	12	#6	30'-4"	—
a1(E)	12	#6	21'-4"	—
a2(E)	12	#6	4'-0"	—
d(E)	22	#5	5'-1"	└
e(E)	4	#4	1'-4"	—
e1(E)	4	#4	1'-3"	—
e2(E)	4	#4	20'-8"	—
h(E)	12	#6	30'-10"	—
h1(E)	12	#6	21'-7"	—
Concrete Removal			Cu. Yd.	14.8
Concrete Superstructure			Cu. Yd.	20.4
Reinforcement Bars, Epoxy Coated			Lbs.	2,130

Bars indicated thus 1 x 2-#5 etc. indicates 1 line of bars with 2 lengths per line.

ABUTMENT JOINT DETAILS
SN 029-0027

SHEET NO. 2 7 SHEETS	F.A. RTE. 622	SECTION (128BR-1)I	COUNTY Fulton	TOTAL SHEETS 23	SHEET NO. 13
	FED. ROAD DIST. NO. ILLINOIS		CONTRACT NO. 68927		
FED. AID PROJECT					

DESIGNED I.J.L.	March 11, 2010
CHECKED A.T.H.	EXAMINED <i>Carl Hoyer</i> ENGINEER OF STRUCTURAL SERVICES
DRAWN Drew Christopher	PASSED <i>Ralph E. Anderson</i> ENGINEER OF BRIDGES AND STRUCTURES
CHECKED I.J.L. A.T.H.	