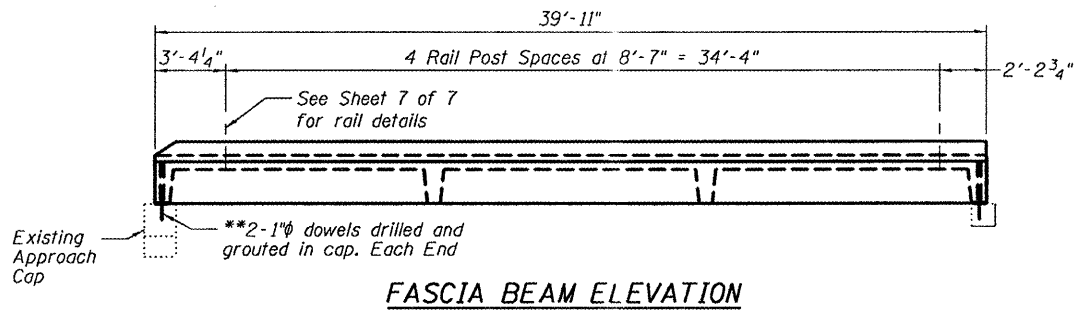
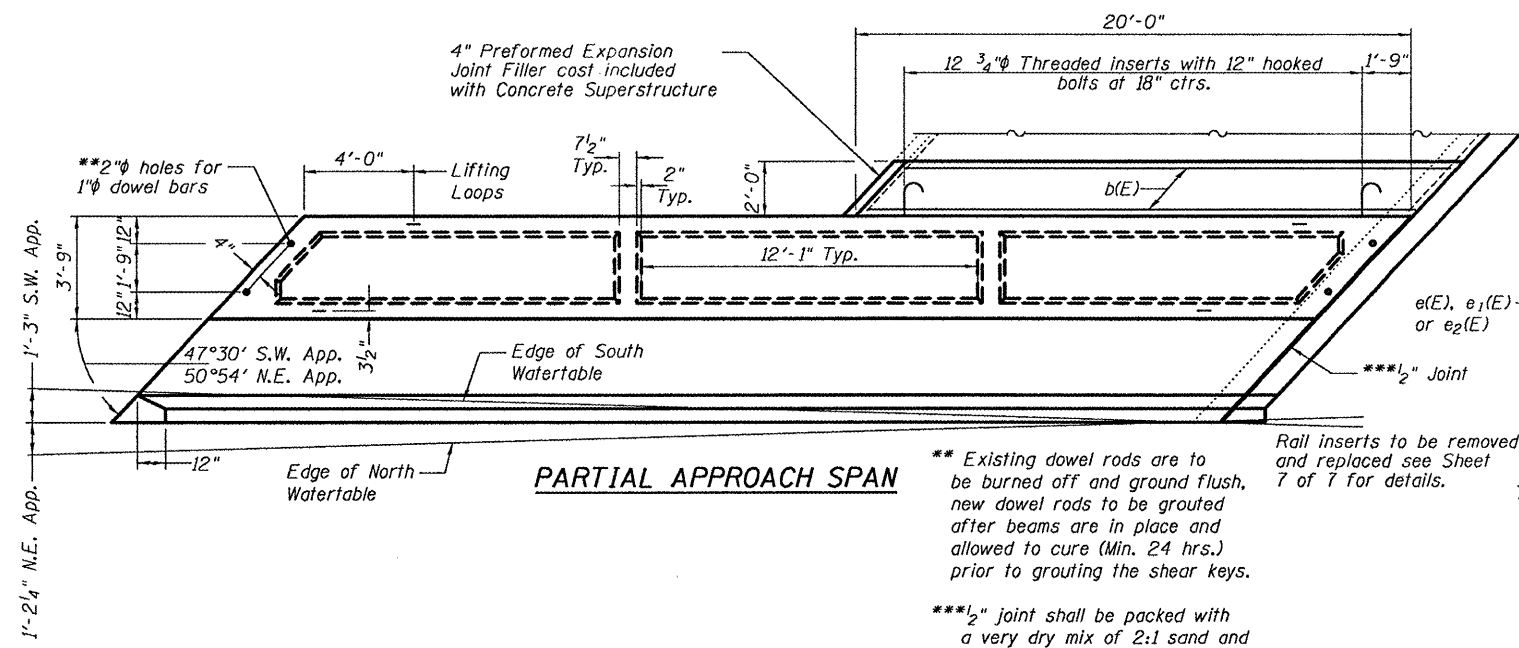


STATE OF ILLINOIS
DEPARTMENT OF TRANSPORTATION



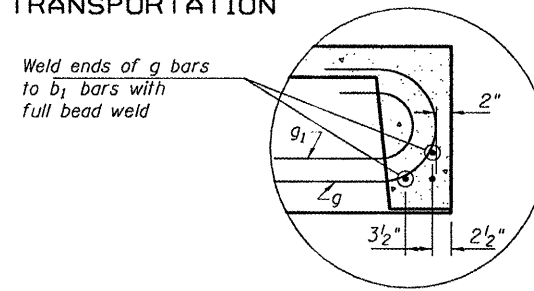
FASCIA BEAM ELEVATION



PARTIAL APPROACH SPAN

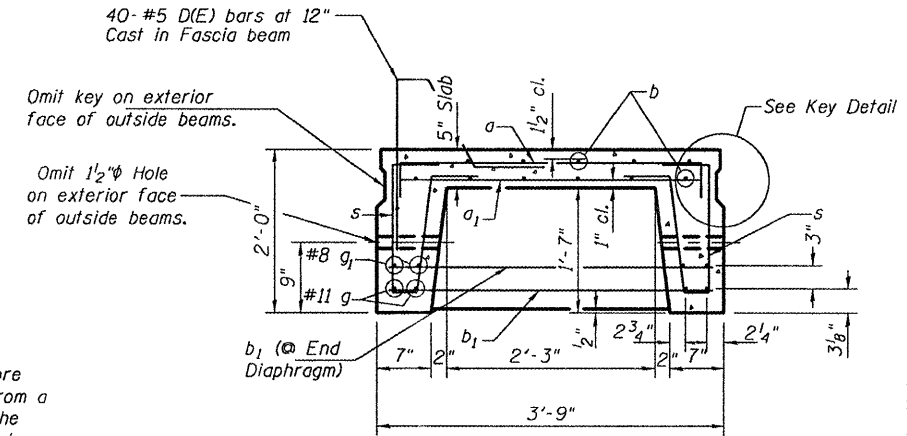
** Existing dowel rods are to be burned off and ground flush, new dowel rods to be grouted after beams are in place and allowed to cure (Min. 24 hrs.) prior to grouting the shear keys.

*** 1/2" joint shall be packed with a very dry mix of 2:1 sand and P.C. Mortar. 1/2" dimension may vary plus or minus to accommodate tolerance in beam lengths.

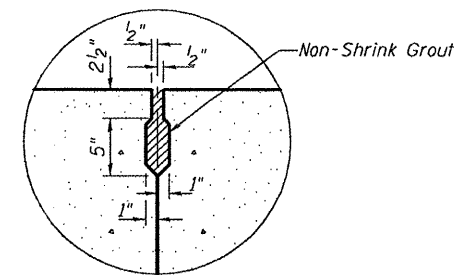


DETAIL A

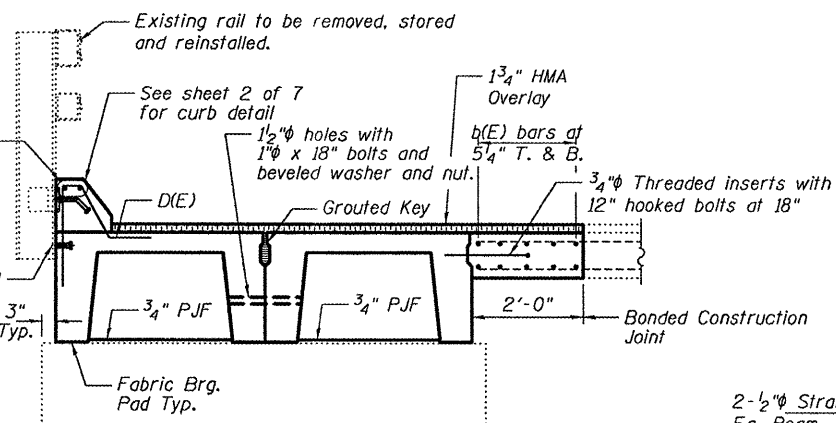
Note:
The surface of the member shall not deviate more than 1/1200 of the full length of the member from a straight line connecting the two end points on the member's surface. (See Special Provision Precast Concrete Structures)



TYPICAL SECTION THRU BEAM

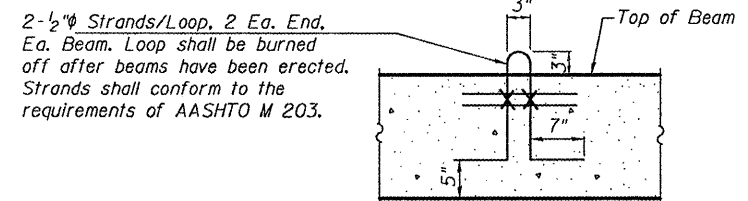


KEY DETAIL



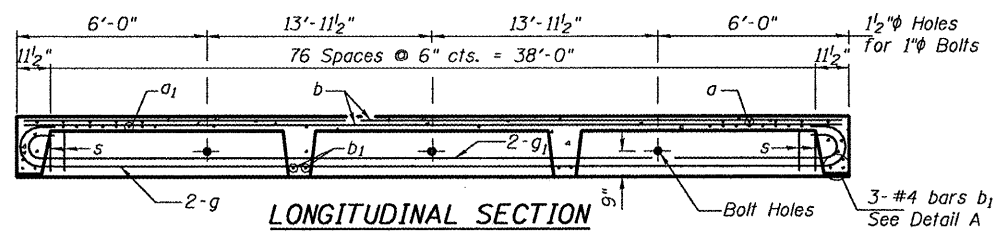
APPROACH CAP ELEVATION

New approach slab and curb on top of Nelson Beams is to be paid for as Concrete Superstructure.

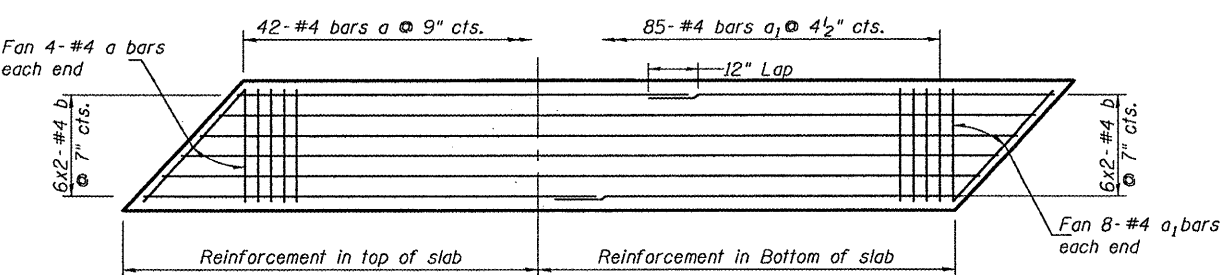


LIFTING LOOP

Approved alternate may be substituted for the above.



LONGITUDINAL SECTION

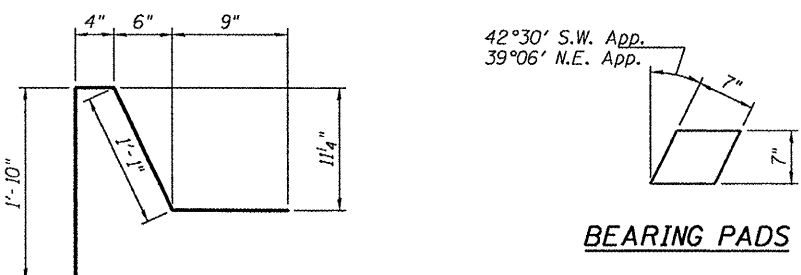


PLAN

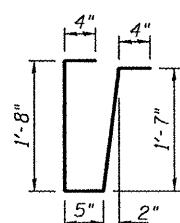
Showing Slab Reinforcement

DESIGNED	I.J.L.
CHECKED	A.T.H.
DRAWN	Drew Christopher
CHECKED	I.J.L. A.T.H.

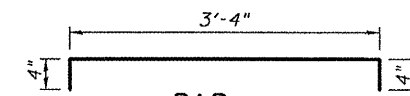
EXAMINED	March 11, 2010
PASSED	Carl Krueger ENGINEER OF STRUCTURAL SERVICES Ralph E. Anderson ENGINEER OF BRIDGES AND STRUCTURES



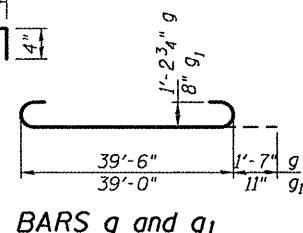
BEARING PADS



BAR s



BAR a



BARS g and g1

Note:
Tack welding of stirrups to bottom longitudinal reinforcement bars will not be permitted except as otherwise authorized in writing by the Engineer. See sheet 2 of 7 for curb dimensions and top reinforcement.

BILL OF MATERIAL

Bar	No.	Size	Length	Shape
b(E)	20	#6	19'-9"	
Precast Concrete Bridge Slab		Sq. Ft.	600	
Reinforcement Bars, Epoxy Coated		Pound	590	

APPROACH BEAM DETAILS
SN 029-0027

SHEET NO. 3 7 SHEETS	F.A. RTE. 622	SECTION (128BR-1)I	COUNTY Fulton	TOTAL SHEETS 23	SHEET NO. 14
	CONTRACT NO. 68927			FED. ROAD DIST. NO. ILLINOIS FED. AID PROJECT	