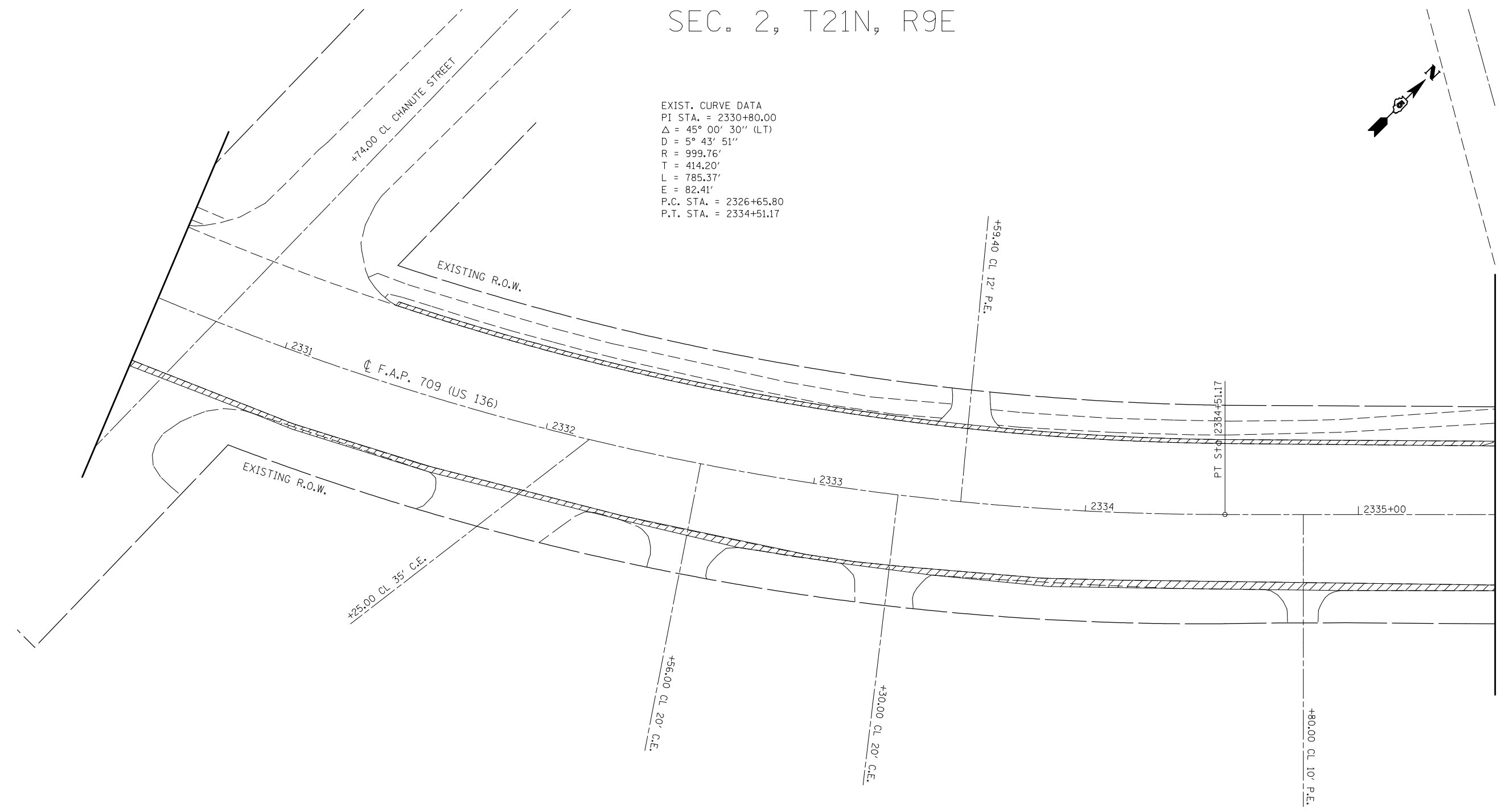
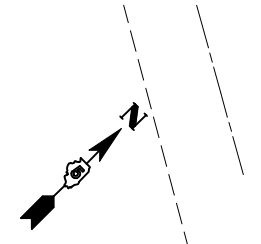


SEC. 2, T21N, R9E

EXIST. CURVE DATA
 PI STA. = 2330+80.00
 Δ = 45° 00' 30" (LT)
 D = 5° 43' 51"
 R = 999.76'
 T = 414.20'
 L = 785.37'
 E = 82.41'
 P.C. STA. = 2326+65.80
 P.T. STA. = 2334+51.17



NOTES:

1. PLAN SHEET TOPO DRAWN FROM AS-BUILT PLANS. DRAWING NOT TO SCALE.
2. DRAINAGE SHALL BE MAINTAINED THROUGH ALL ENTRANCES.
3. SEE SPECIAL PROVISIONS FOR REQUIREMENTS OF OPENING MANHOLES AND WATER VALVE BOXES AFTER RESURFACING IS COMPLETE.

COLD MILLING (SPECIAL)

FILE NAME =	USER NAME = hoganbj	DESIGNED - BJM	REVISED -
ct:\pw\work\PWIDOT\HOGANBJ\d0104446\7017\7\sheets.dgn		DRAWN - BJH	REVISED -
	PLOT SCALE = 40.0000' / IN.	CHECKED -	REVISED -
	PLOT DATE = 1/29/2010	DATE - 1/21/2010	REVISED -

**STATE OF ILLINOIS
 DEPARTMENT OF TRANSPORTATION**

PLAN SHEETS

SCALE: 1" = 20' SHEET NO. 13 OF 20 SHEETS STA. 2330+50 TO STA. 2335+50

F.A.P. RTE.	SECTION	COUNTY	TOTAL SHEETS	SHEET NO.
709	(113)RS-1	CHAMPAIGN	65	48
FED. ROAD DIST. NO. ILLINOIS FED. AID PROJECT			CONTRACT NO. 70117	