

STATE OF ILLINOIS
DEPARTMENT OF TRANSPORTATION
DIVISION OF HIGHWAYS
**PROPOSED
HIGHWAY PLANS**

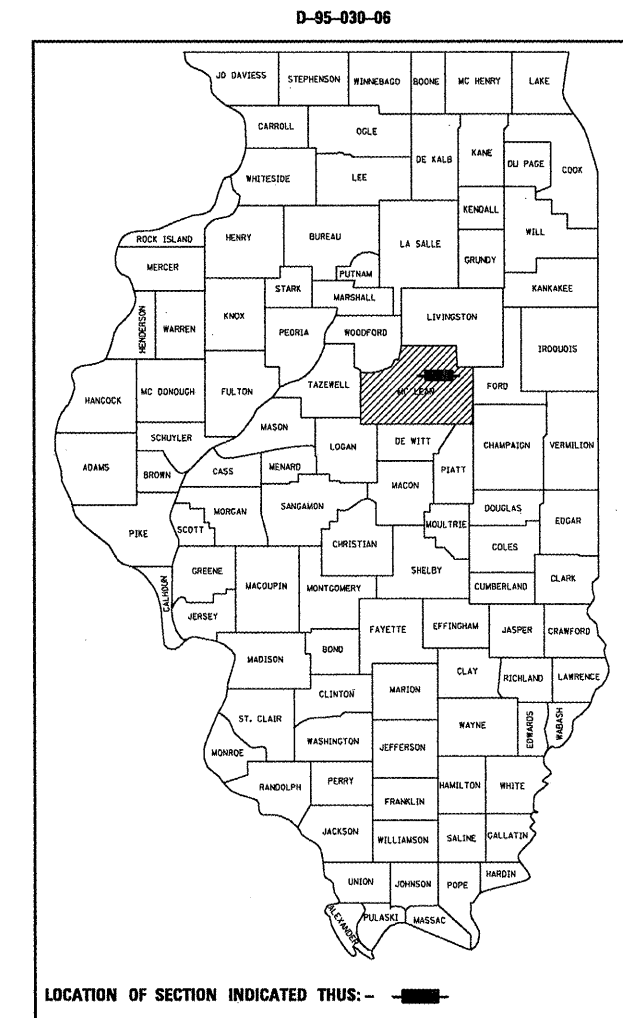
F.A.S. RTE.	SECTION	COUNTY	TOTAL SHEETS	SHEET NO.
2484	(125,126,127)RS-2	MCLEAN	122	1
		ILLINOIS	CONTRACT NO. 70510	

FOR INDEX OF SHEETS, SEE SHEET NO. 2
FOR SUMMARY OF QUANTITIES, SEE SHEETS 5-8

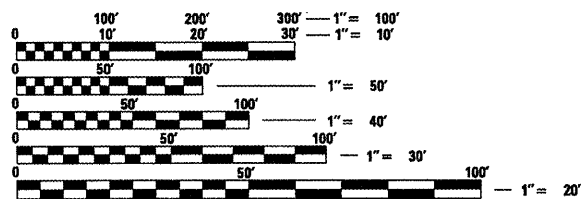
FAS ROUTE 2484 (IL 165)
SECTION (125,126,127)RS-2

RESURFACING (3P)
MCLEAN COUNTY
COOKSVILLE TO COLFAX

C-95-031-06



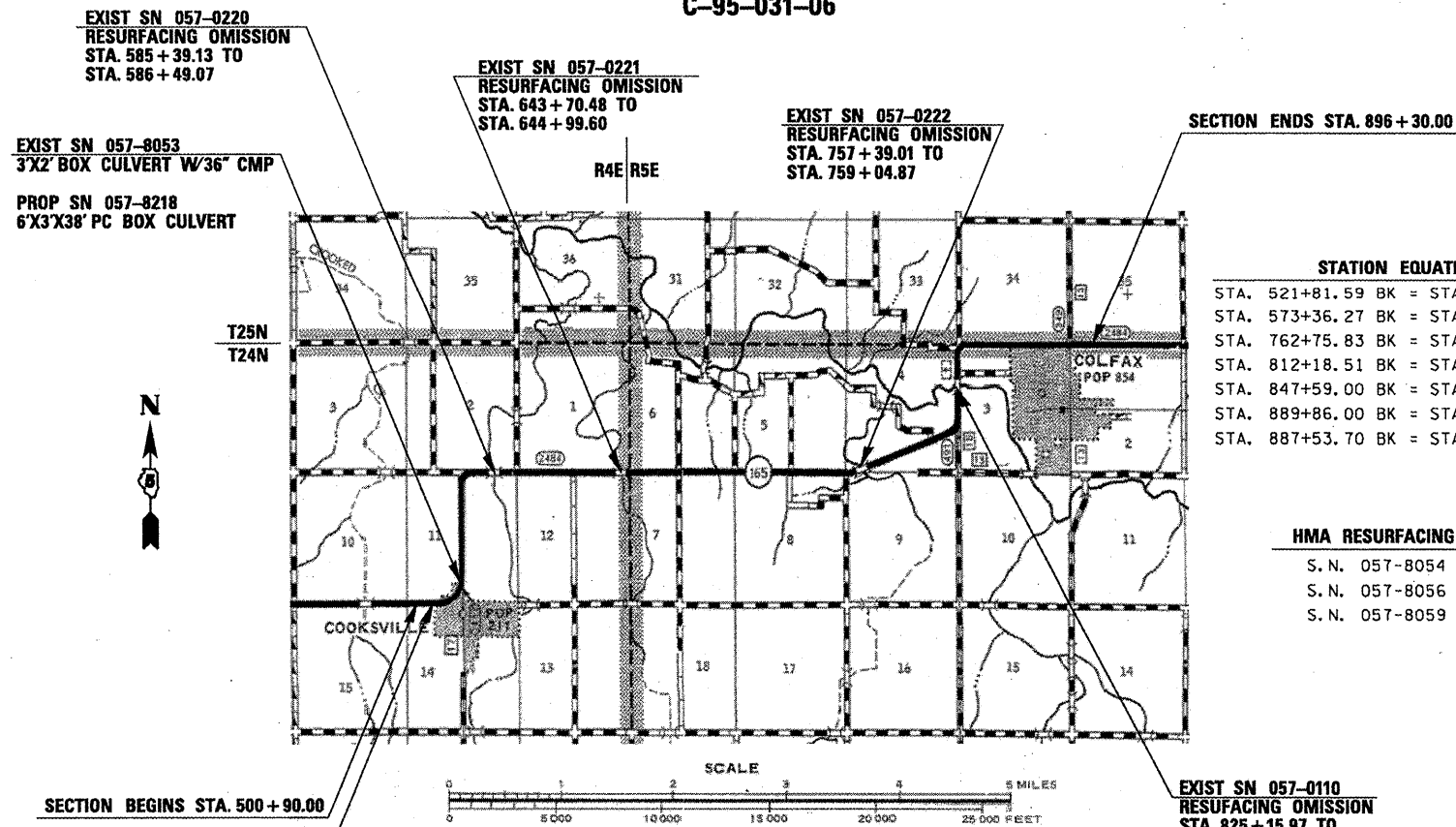
CURRENT ADT
MAJOR COLLECTOR
FAS 2484 (IL 165) = 1050 (2007)
SU = 8.8% MU = 2.5%



FULL SIZE PLANS HAVE BEEN PREPARED USING STANDARD ENGINEERING SCALES. REDUCED SIZED PLANS WILL NOT CONFORM TO STANDARD SCALES. IN MAKING MEASUREMENTS ON REDUCED PLANS, THE ABOVE SCALES MAY BE USED.

J.U.L.I.E.
JOINT UTILITY LOCATION INFORMATION FOR EXCAVATION
1-800-892-0123 TOWNSHIPS
OR 811 LAWNSDALE, BLUE MOUND, MARTIN

PROJECT ENGINEER: NANCY FASIG
SQUAD LEADER: STEVE COOMBS
(217) 465-4181
CONTRACT NO. 70510



STATION EQUATIONS

STA. 521+81.59 BK = STA. 525+30.10 AH
STA. 573+36.27 BK = STA. 575+56.90 AH
STA. 762+75.83 BK = STA. 762+84.88 AH
STA. 812+18.51 BK = STA. 813+54.31 AH
STA. 847+59.00 BK = STA. 849+88.76 AH
STA. 889+86.00 BK = STA. 878+38.00 AH
STA. 887+53.70 BK = STA. 887+71.00 AH

HMA RESURFACING
S. N. 057-8054
S. N. 057-8056
S. N. 057-8059

EXIST SN 057-0110
RESURFACING OMISSION
STA. 825+15.97 TO
STA. 826+01.39
PROPOSED BEARING AND JOINT REPAIR



GROSS LENGTH = 39,726.95 FT. = 7.524 MILE
NET LENGTH = 39,036.61 FT. = 7.393 MILE

STATE OF ILLINOIS
DEPARTMENT OF TRANSPORTATION
DIVISION OF HIGHWAYS

SUBMITTED 1/27 20 10

Joseph E. Dowden
DEPUTY DIRECTOR OF HIGHWAYS, REGION ENGINEER

March 19, 20 10
Scott E. Stitt, P.E.
ENGINEER OF DESIGN AND ENVIRONMENT

March 19, 20 10
Christine M. Reed
DIRECTOR OF HIGHWAYS, CHIEF ENGINEER

**PRINTED BY THE AUTHORITY
OF THE STATE OF ILLINOIS**