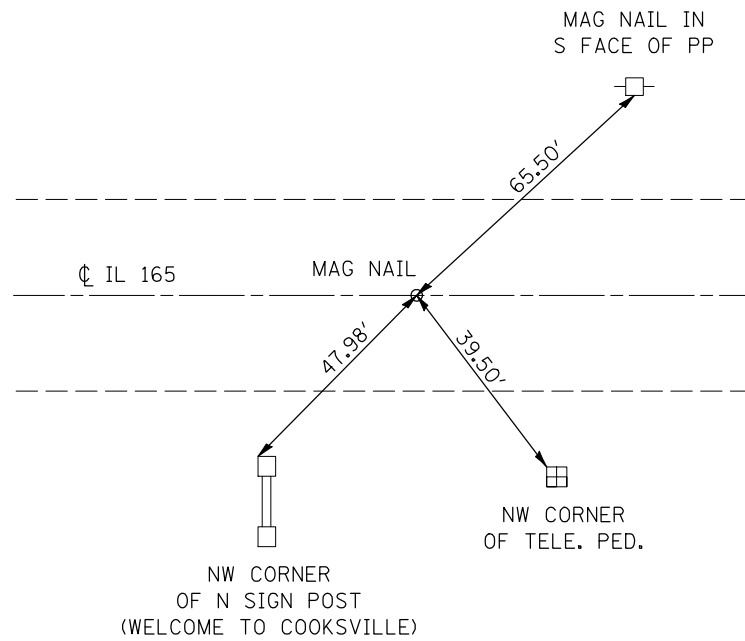
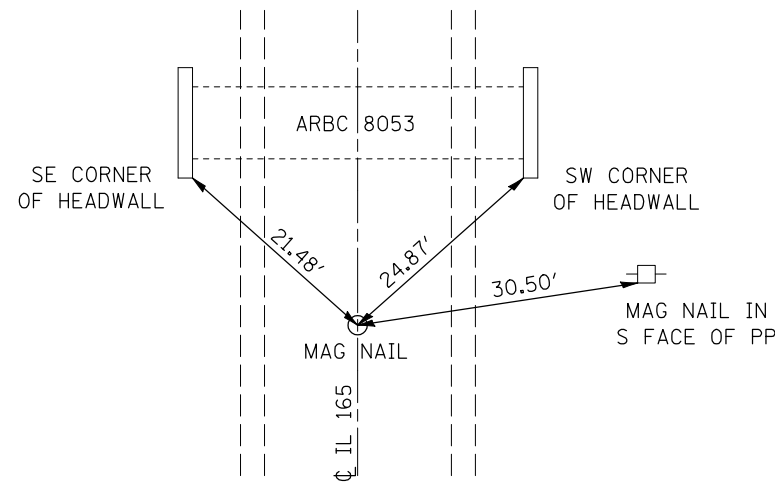


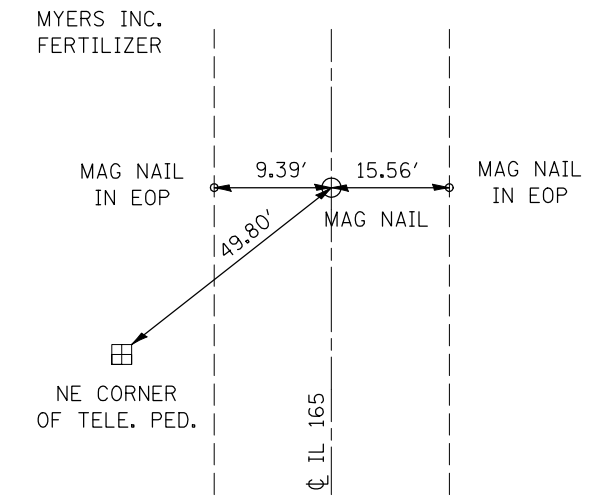
P.C.
STA. 509 + 19.90



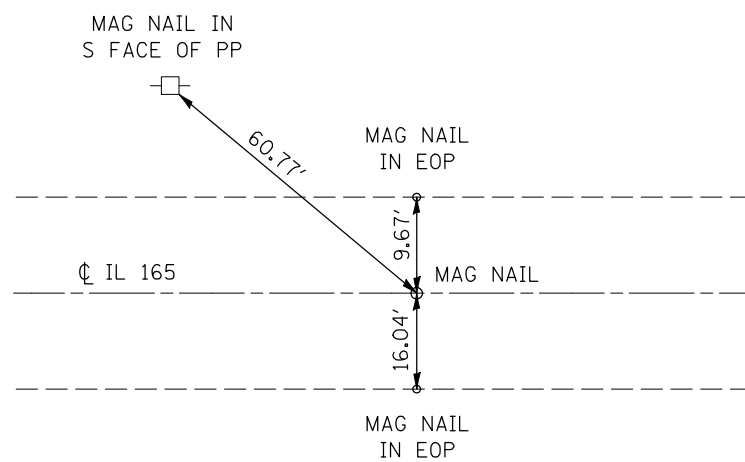
P.T.
521 + 81.59 (BK) =
525 + 30.10 (AH)



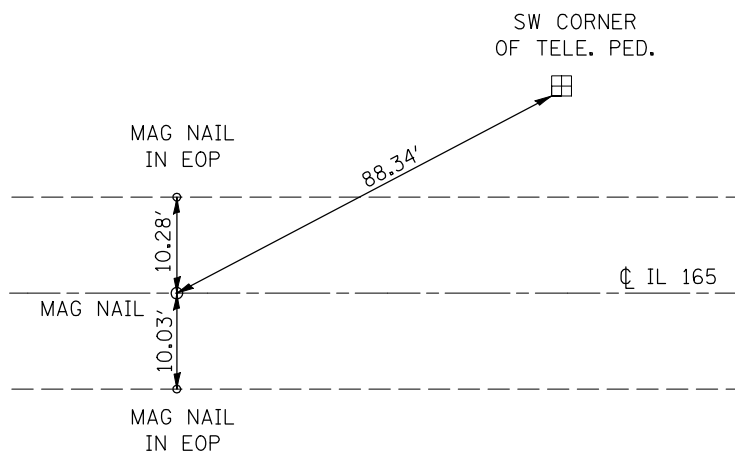
P.C.
STA. 565 + 37.58



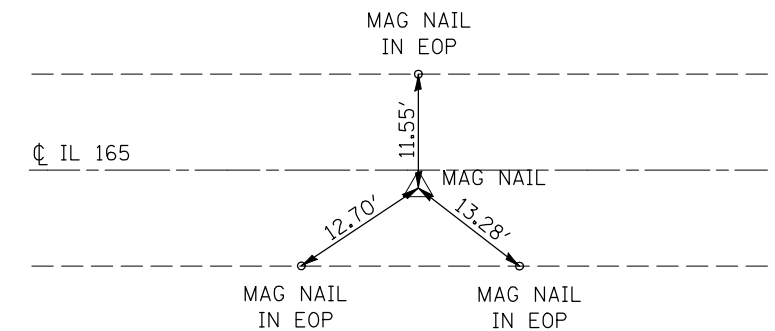
P.T.
573 + 36.27 (BK) =
575 + 56.90 (AH)



P.C.
STA. 613 + 70.31



P.I.
STA. 619 + 86.03, 1.60' RT.



FILE NAME =	USER NAME = coombessf	DESIGNED -	REVISED -
ct:\pw\work\PIWIDOT\COOMBESSF\dms87296\g70510-sht-ATB.dgn		DRAWN -	REVISED -
	PLOT SCALE = 40.0000' / IN.	CHECKED -	REVISED -
	PLOT DATE = 1/13/2010	DATE -	REVISED -

STATE OF ILLINOIS
DEPARTMENT OF TRANSPORTATION

CENTERLINE TIE POINTS

SCALE: SHEET NO. OF SHEETS STA. TO STA.

F.A.S. RTE.	SECTION	COUNTY	TOTAL SHEETS	SHEET NO.
2484	(125,126,127)RS-2	MCLEAN	122	18
CONTRACT NO. 70510			ILLINOIS FED. AID PROJECT	