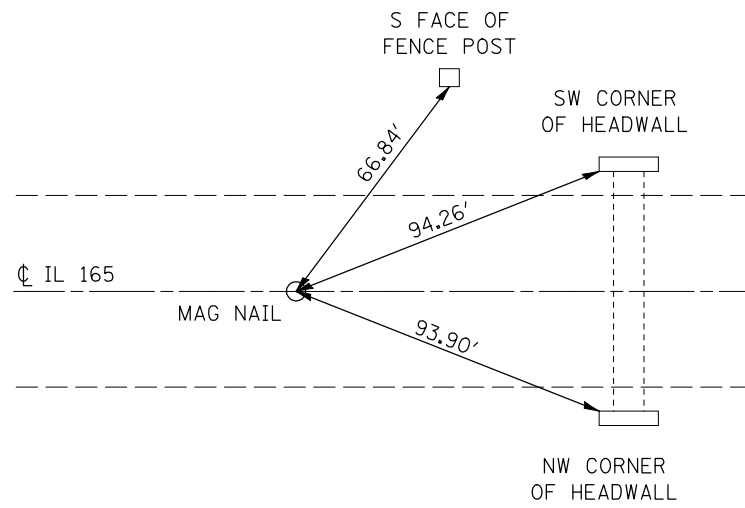
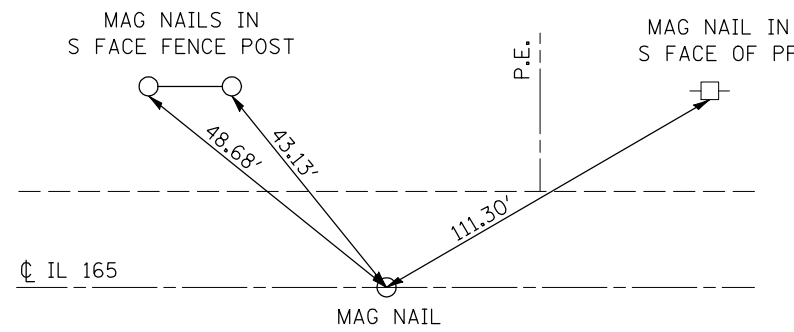


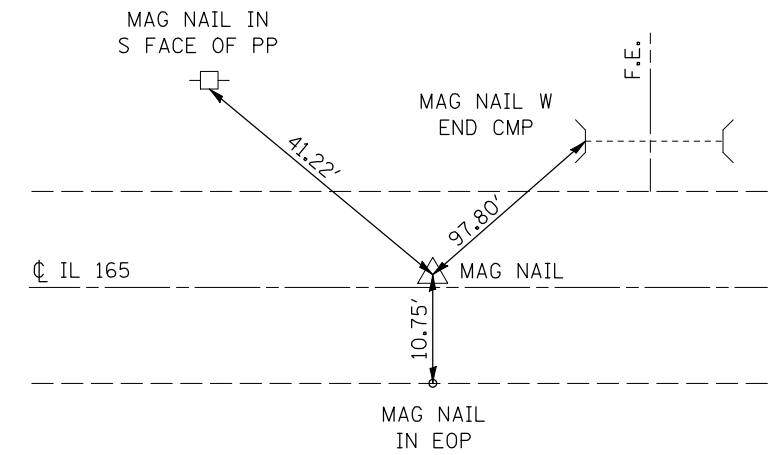
P.T.
STA. 626 + 01.73



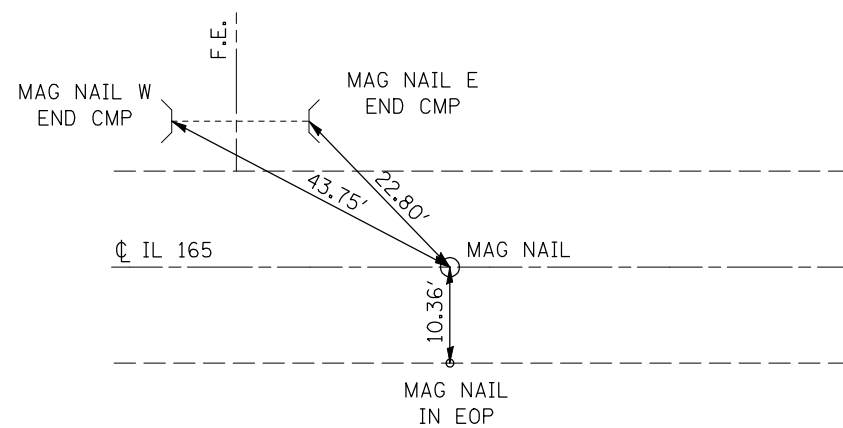
P.C.
STA. 637 + 08.73



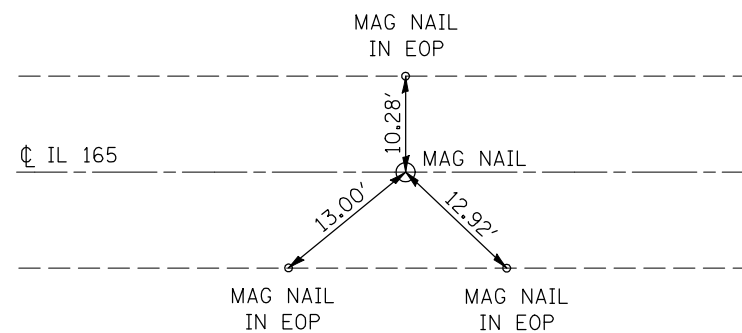
P.I.
STA. 638 + 42.95, 0.35' LT.



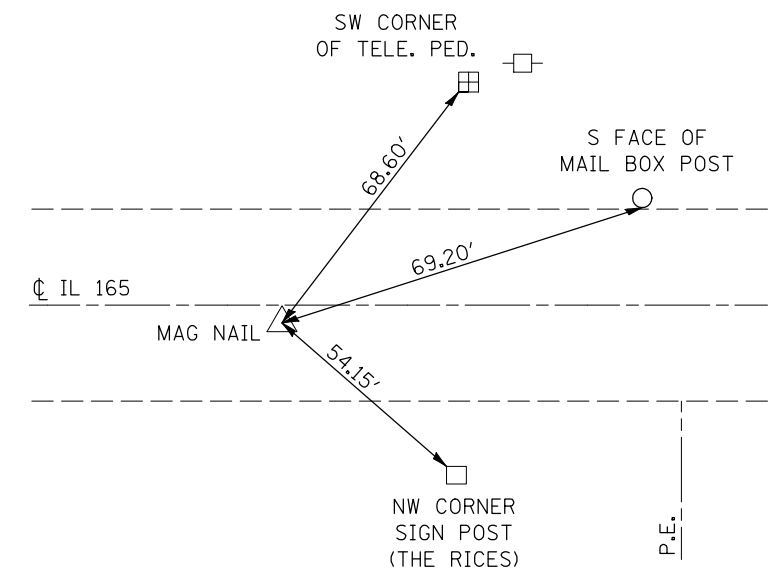
P.I.
STA. 639 + 77.17



P.C.
STA. 666 + 03.82



P.I.
STA. 670 + 67.42, 0.69' RT.



FILE NAME =	USER NAME = coombessf	DESIGNED -	REVISED -
ct:\pw\work\PWIDOT\COOMBESSF\dms87296\070510-sht-ATB.dgn		DRAWN -	REVISED -
	PLOT SCALE = 40.0000' / IN.	CHECKED -	REVISED -
	PLOT DATE = 1/13/2010	DATE -	REVISED -

**STATE OF ILLINOIS
DEPARTMENT OF TRANSPORTATION**

CENTERLINE TIE POINTS

SCALE: SHEET NO. OF SHEETS STA. TO STA.

F.A.S. RTE.	SECTION	COUNTY	TOTAL SHEETS	SHEET NO.
2484	(125,126,127)RS-2	MCLEAN	122	19
CONTRACT NO. 70510				
ILLINOIS FED. AID PROJECT				