

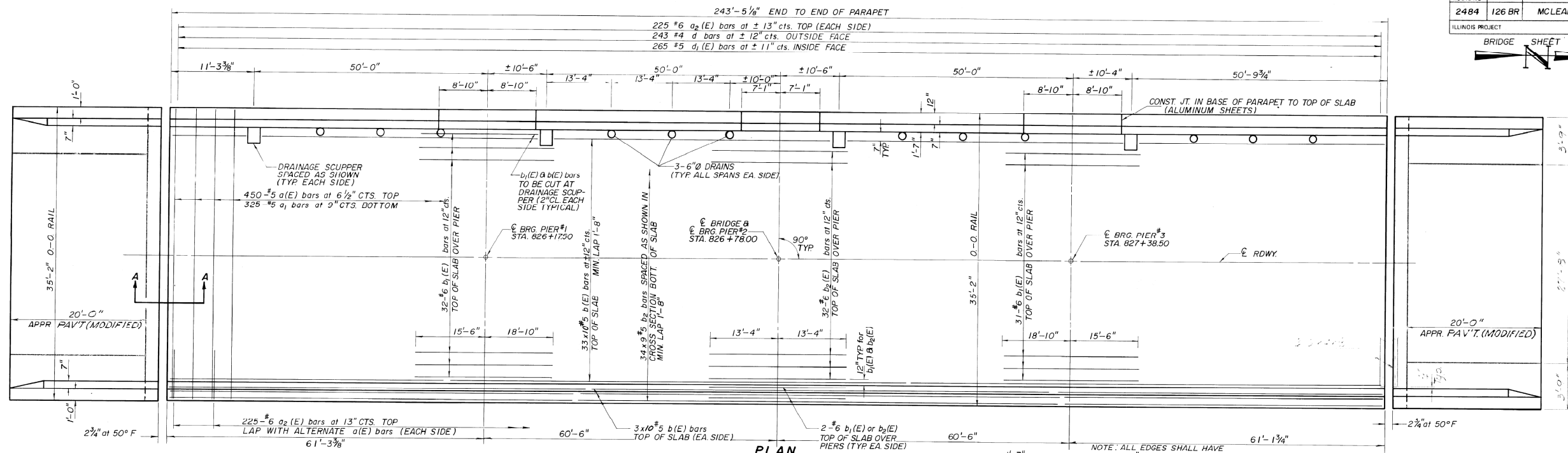
EXISTING SUPERSTRUCTURE DETAILS

S.N. 057-0110

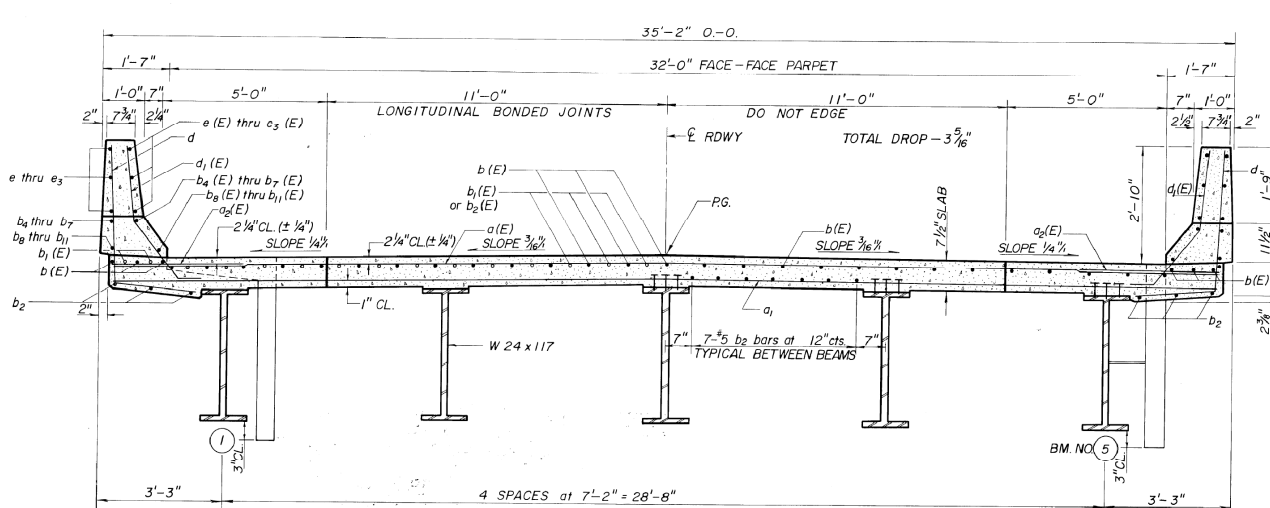
(FOR INFORMATION ONLY)

F.A.S. ROUTE NO.	SEC.	COUNTY	TOTAL SHEETS	SHEET NO.
2484	126 BR	MCLEAN	15	8

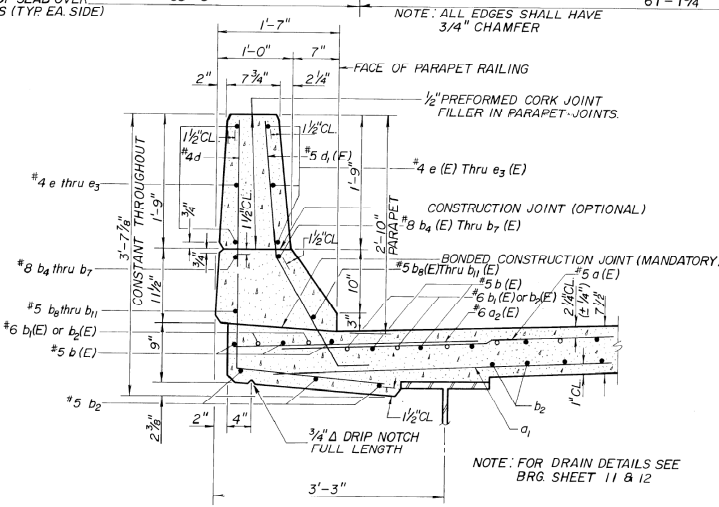
BRIDGE SHEET 3 OF 13



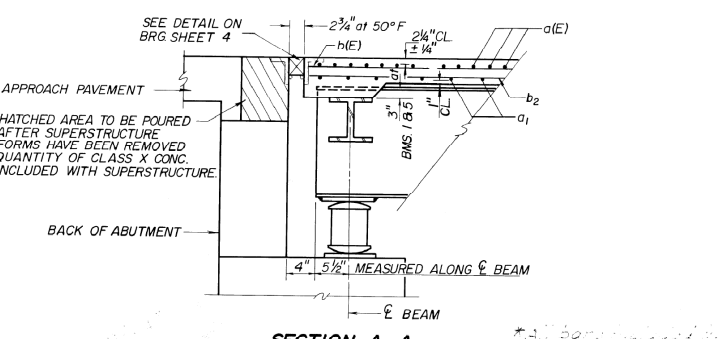
PLAN



NEAR PIER CROSS SECTION (LOOKING NORTH) NEAR MIDSPAN



CURB SECTION



SECTION A-A

BILL OF MATERIAL - SUPERSTRUCTURE*

BAR	NO.	SIZE	LENGTH	SHAPE
a(E)	450	#5	34'-6"	
a1	325	#5	34'-6"	
a2(E)	450	#6	4'-0"	
b(E)	351	#5	25'-8"	
b1(E)	72	#6	34'-4"	
b2(E)	36	#6	26'-8"	
b3	306	#5	28'-10"	
b4	8	#8	27'-8"	
b4(E)	8	#8	27'-8"	
b5	8	#8	8'-6"	
b5(E)	8	#8	8'-6"	
b6	8	#8	23'-10"	
b6(E)	8	#8	23'-10"	
b7	4	#8	6'-9"	
b7(E)	4	#8	6'-9"	
b8	8	#5	26'-10"	
b8(E)	8	#5	26'-10"	
b9	8	#5	8'-6"	
b9(E)	8	#5	8'-6"	
b10	8	#5	23'-0"	
b10(E)	8	#5	23'-0"	
b11	4	#5	6'-9"	
b11(E)	4	#5	6'-9"	
b12(E)	64	#5	25'-0"	
d	486	#4	5'-6"	
d1(E)	530	#5	3'-11"	
e	36	#4	17'-0"	
e(E)	36	#4	17'-0"	
e1	36	#4	14'-6"	
e1(E)	36	#4	14'-6"	
e2	24	#4	8'-6"	
e2(E)	24	#4	8'-6"	
e3	12	#4	6'-9"	
e3(E)	12	#4	6'-9"	
CLASS X CONCRETE				CU. YD. 2736
* REINFORCEMENT BARS (EPOXY COATED) LBS.				65,220

NOTE: BARS INDICATED THUS: 32 x 9 #5 ETC. INDICATES 32 LINES OF BARS WITH 9 LENGTHS PER LINE.

SUPERSTRUCTURE
F.A.S. RTE. 2484
SECTION 126 BR
MCLEAN COUNTY
STA. 826 + 78.00

FILE NAME =	USER NAME = coombessf	DESIGNED - RTC	REVISED -	STATE OF ILLINOIS DEPARTMENT OF TRANSPORTATION	EXISTING SUPERSTRUCTURE DETAILS		F.A.S. RTE. 2484	SECTION (125,126,127)RS-2	COUNTY MCLEAN	TOTAL SHEETS 122	SHEET NO. 43	
ct:\pw\work\PWIDOT\COOMBESSF\dms87296\78510_bridge_repair_sht.dgn		DRAWN - RTC	REVISED -		S.N. 057-0110		SCALE:	SHEET NO. 5 OF 8 SHEETS	STA. TO STA.	CONTRACT NO. 70510		
		CHECKED -	REVISED -		ILLINOIS FED. AID PROJECT							
		DATE -	REVISED -									