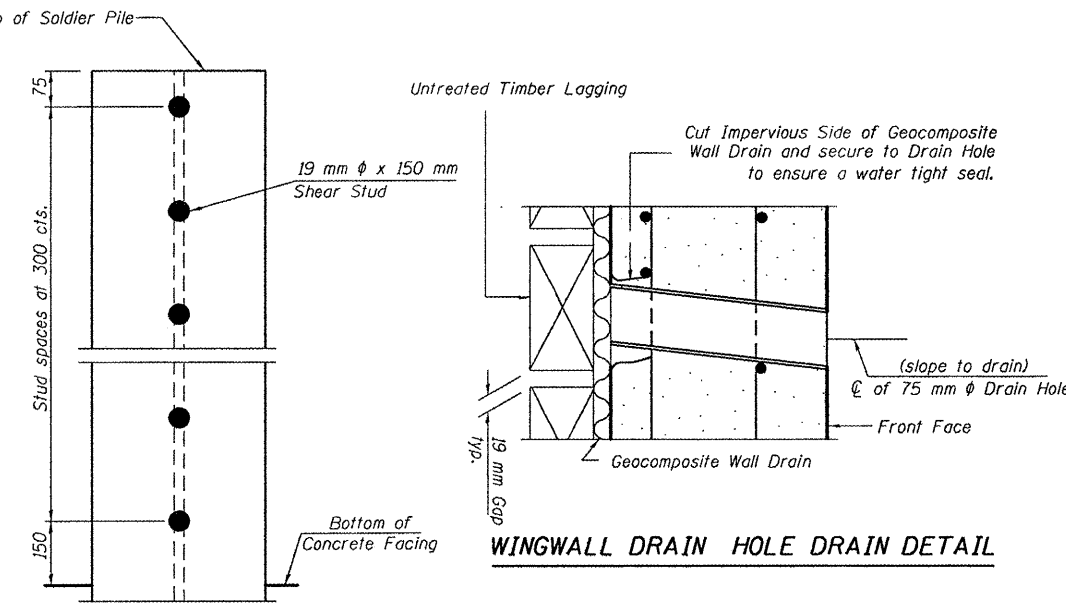
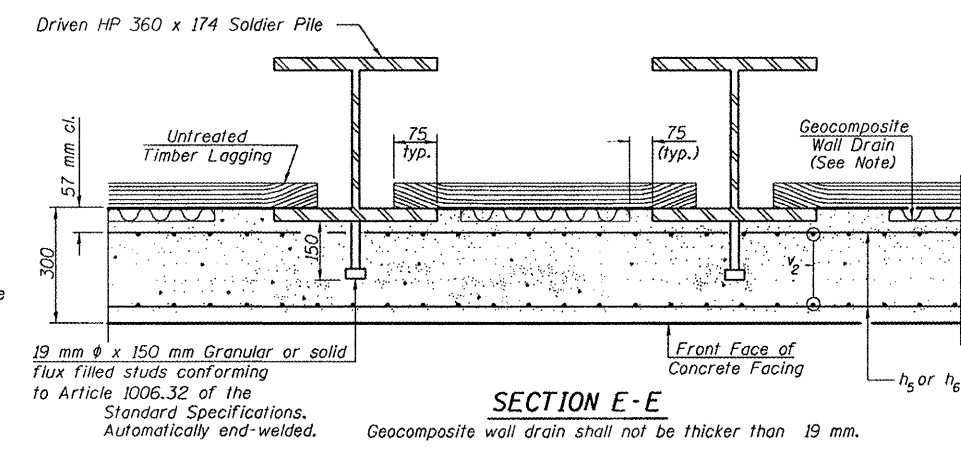


SECTION THRU WALL

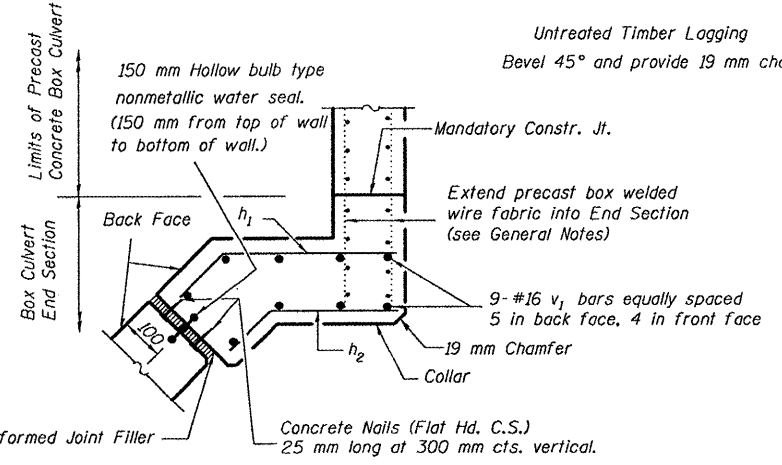


SHEAR STUD DETAIL
(Elevation of pile shown)

WINGWALL DRAIN HOLE DRAIN DETAIL



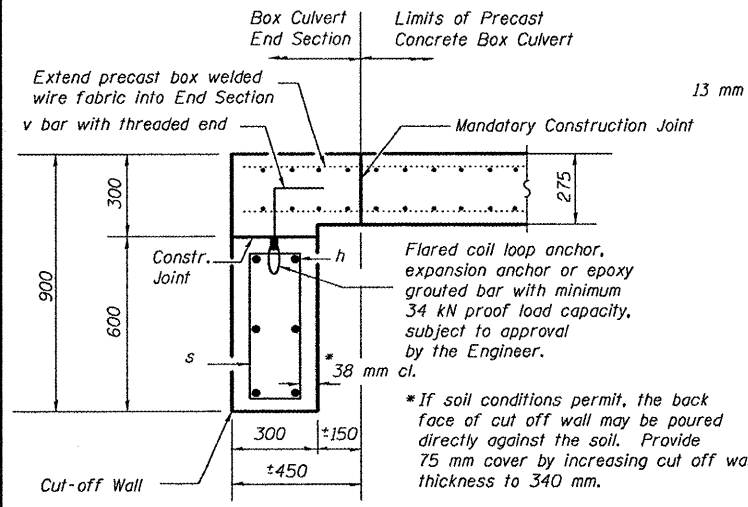
SECTION E-E



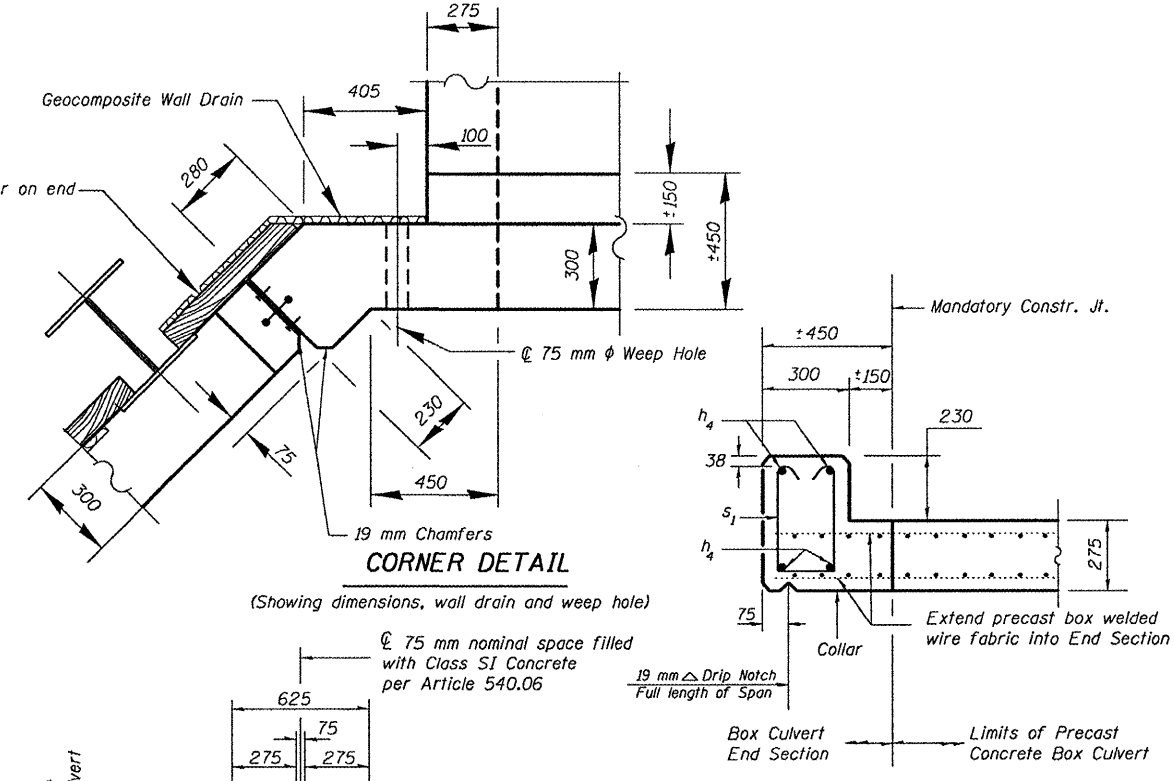
SECTION B-B
(Showing reinforcement and seal)

SEQUENCE OF WALL CONSTRUCTION

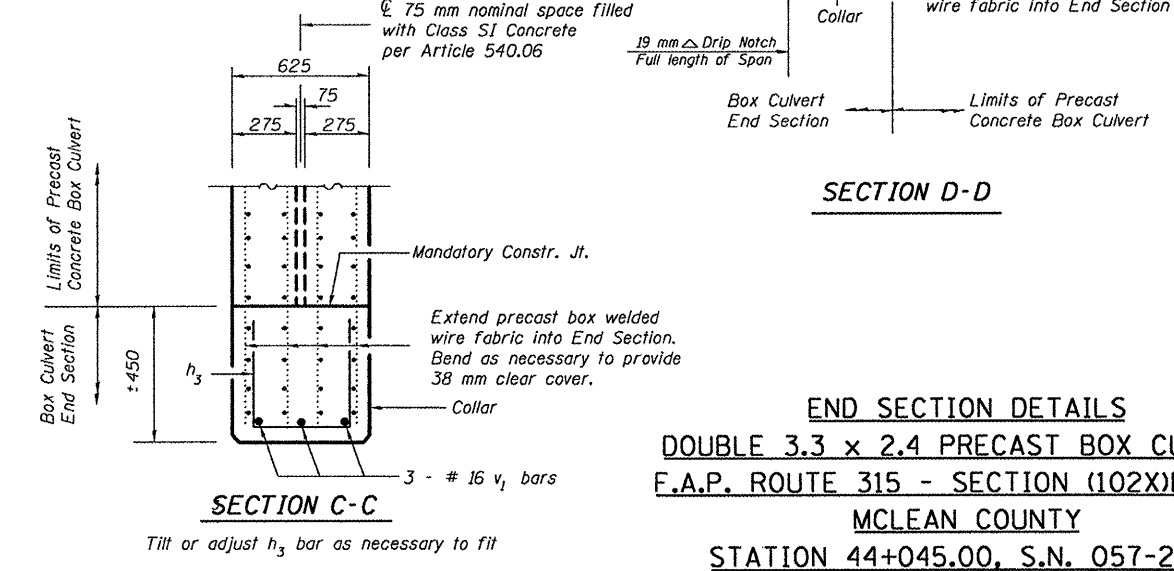
1. Build the cut-off wall
2. Place precast box sections
3. Drive soldier piles (may be driven prior to placing the boxes)
4. Install Untreated Timber Lagging
5. Place Geocomposite Wall Drain
6. Place and compact backfill behind wall
7. Install Stud Shear Connectors
8. Place rebar and form concrete face
9. Cast concrete face
10. Remove temporary soldier pile and associated timber lagging.
11. Place remainder of backfill to proposed finished ground surface in front and back of wall.



SECTION A-A



CORNER DETAIL
(Showing dimensions, wall drain and weep hole)



SECTION C-C

SECTION D-D

END SECTION DETAILS
DOUBLE 3.3 x 2.4 PRECAST BOX CULVERT
F.A.P. ROUTE 315 - SECTION (102X)BR, BR-3
MCLEAN COUNTY
STATION 44+045.00, S.N. 057-2039
CULVERT NO. 2

FILE NAME =	USER NAME = #USER#	DESIGNED - R. CARROLL	REVISED -
#FILE#		DRAWN - R. CARROLL	REVISED -
	PLOT SCALE = #SCALE#	CHECKED -	REVISED -
	PLOT DATE = #DATE#	DATE -	REVISED -

STATE OF ILLINOIS
DEPARTMENT OF TRANSPORTATION

END SECTION DETAILS	
S.N. 057-2039	
SCALE:	SHEET NO. 3 OF 5 SHEETS STA. TO STA.

F.A.P. RTE. 315	SECTION (102X)BR, BR-3	COUNTY MCLEAN	TOTAL SHEETS 42	SHEET NO. 28
			CONTRACT NO. 70529	
ILLINOIS FED. AID PROJECT				