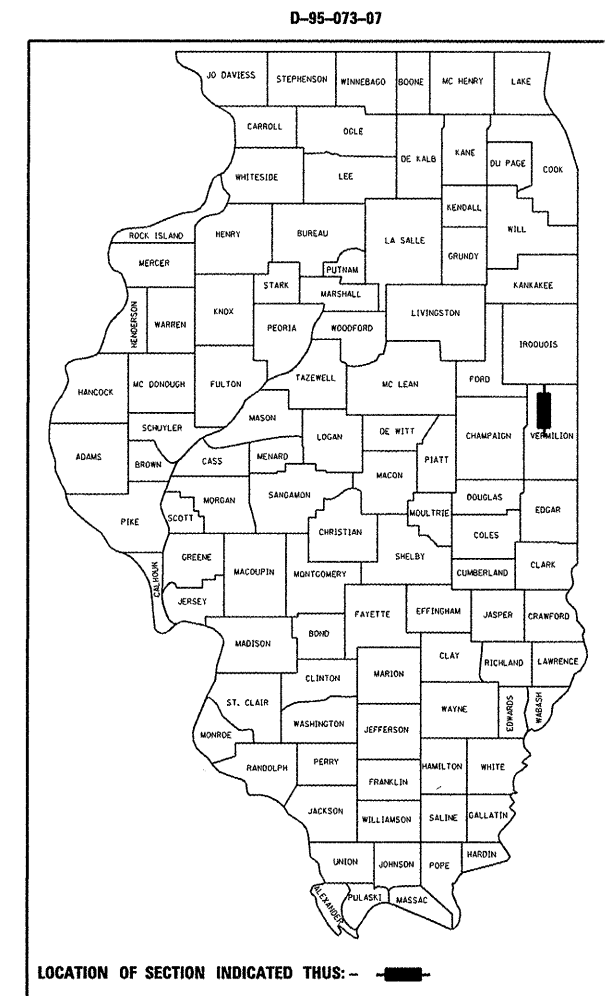


F.A.P. RTE.	SECTION	COUNTY	TOTAL SHEETS	SHEET NO.
840	122 RS-4	VERMILION	42	1

STATE OF ILLINOIS
DEPARTMENT OF TRANSPORTATION
DIVISION OF HIGHWAYS

**PROPOSED
HIGHWAY PLANS**

FAP ROUTE 840 (IL 49)
SECTION 122 RS-4
VERMILION COUNTY
RESURFACING (3P) FROM FAST CREEK TO THE IROQUOIS COUNTY LINE



(217)465-4181

PROJECT ENGINEER: KEVIN TRAPP

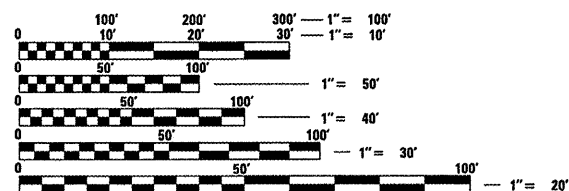
SQUAD LEADER: JEFF SHERER

DESIGNER: RANDY AUSTIN

FOR INDEX OF SHEETS, SEE SHEET NO. 2
FOR SUMMARY OF QUANTITIES, SEE SHEET NO. 4-5

CURRENT TRAFFIC DATA			
	1282+10 TO 1286+69	1286+69 TO 1391+25.75	
	LEG "A"	LEG "B"	
CURRENT ADT =	1,800	950	(2009)
20 YR ADT =	2,150	1,150	(2029)
P.U. & P.C. % =	85.8	76.3	(2009)
SU % =	8.5	6.4	(2009)
MU % =	5.7	17.3	(2009)

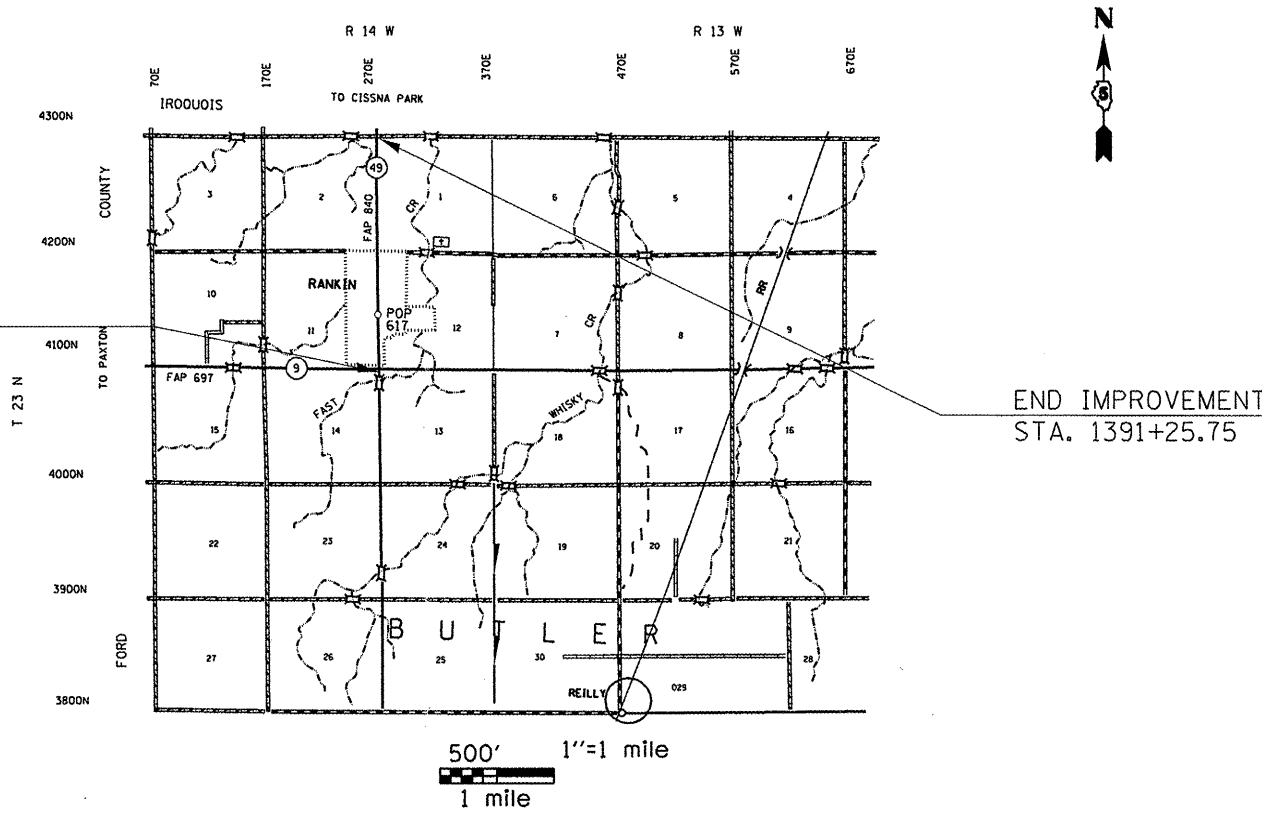
DESIGN DESIGNATION
MINOR ARTERIAL



FULL SIZE PLANS HAVE BEEN PREPARED USING STANDARD ENGINEERING SCALES. REDUCED SIZED PLANS WILL NOT CONFORM TO STANDARD SCALES. IN MAKING MEASUREMENTS ON REDUCED PLANS, THE ABOVE SCALES MAY BE USED.

J.U.L.I.E.
JOINT UTILITY LOCATION INFORMATION FOR EXCAVATION
1-800-892-0123

C-95-073-07



TOTAL LENGTH = 10,915.75 ft = 2.067 miles
NET LENGTH = 10,915.75 ft = 2.067 miles

STATE OF ILLINOIS
DEPARTMENT OF TRANSPORTATION
DIVISION OF HIGHWAYS

SUBMITTED 1/25 20 10

Joseph E. Douvan
DEPUTY DIRECTOR OF HIGHWAYS, REGION ENGINEER

March 19, 20 10.
Scott E. Stett P.E. RD
ENGINEER OF DESIGN AND ENVIRONMENT

March 19, 20 10
Christine M. Reed RD
DIRECTOR OF HIGHWAYS, CHIEF ENGINEER

**PRINTED BY THE AUTHORITY
OF THE STATE OF ILLINOIS**