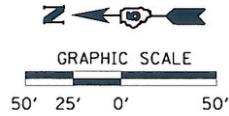
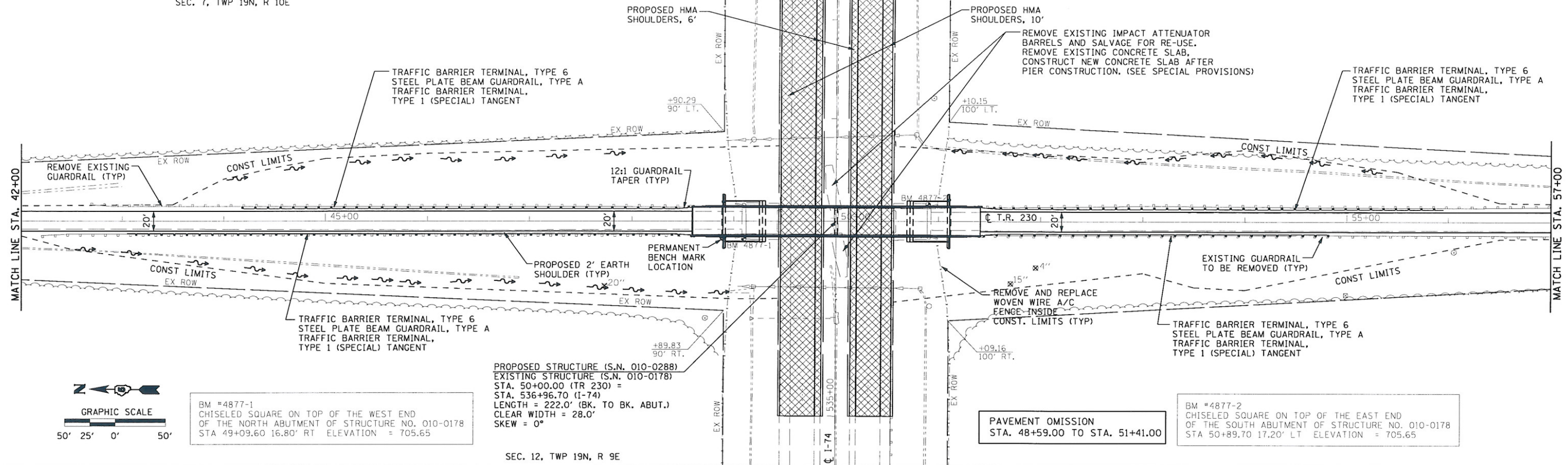


SEC. 7, TWP 19N, R 10E



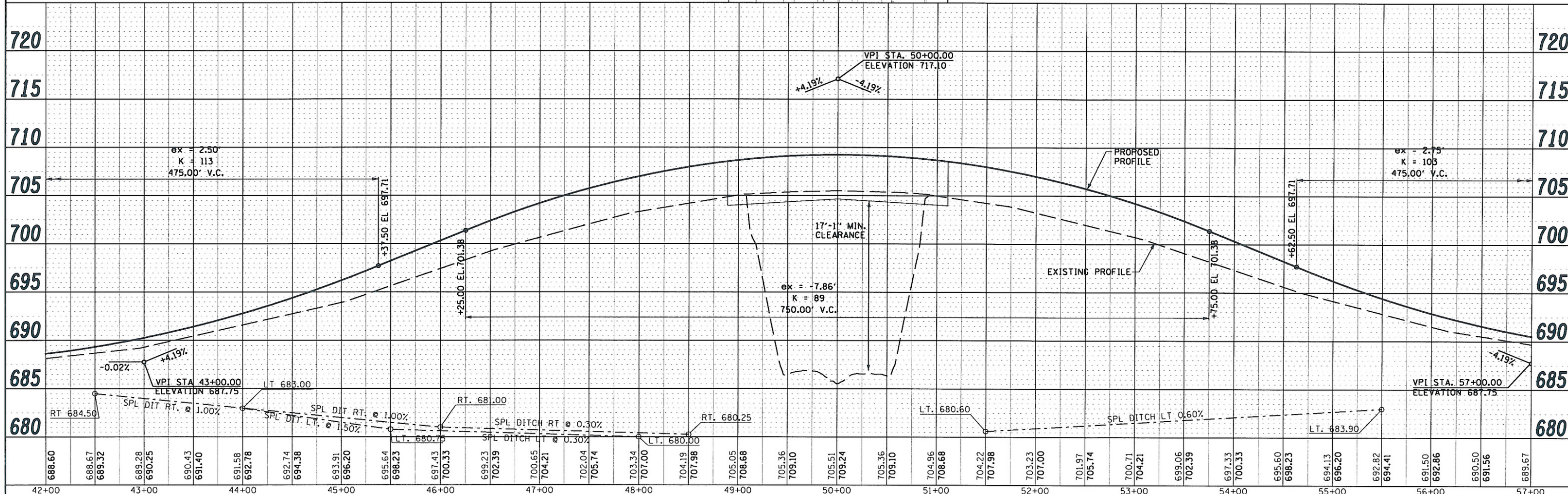
BM #4877-1  
CHISELED SQUARE ON TOP OF THE WEST END  
OF THE NORTH ABUTMENT OF STRUCTURE NO. 010-0178  
STA 49+09.60 16.80' RT ELEVATION = 705.65

PROPOSED STRUCTURE (S.N. 010-0288)  
EXISTING STRUCTURE (S.N. 010-0178)  
STA. 50+00.00 (TR 230) =  
STA. 536+96.70 (I-74)  
LENGTH = 222.0' (BK. TO BK. ABUT.)  
CLEAR WIDTH = 28.0'  
SKEW = 0°

PAVEMENT OMISSION  
STA. 48+59.00 TO STA. 51+41.00

BM #4877-2  
CHISELED SQUARE ON TOP OF THE EAST END  
OF THE SOUTH ABUTMENT OF STRUCTURE NO. 010-0178  
STA 50+89.70 17.20' LT ELEVATION = 705.65

SEC. 12, TWP 19N, R 9E



HURST-ROSCHIE ENGINEERS, INC.  
HILLSBORO, ILLINOIS 62049  
(217)332-3959 FAX (217)332-3212



FILE NAME =	T:\190-4199.WD\3_TR230.cover-1-74.dgn\0578	USER NAME =	HURST-ROSCHIE
DESIGNED -	JJC	REVISED -	
DRAWN -	TWC	REVISED -	
CHECKED -	MAR	REVISED -	
DATE -	01-27-10	REVISED -	

STATE OF ILLINOIS  
DEPARTMENT OF TRANSPORTATION

TR 230 - PLAN AND PROFILE  
SCALE: 1:50 SHEET NO. 2 OF 3 SHEETS STA. 42+00 TO STA. 57+00

F.A.I. RTE.	74	SECTION	(10-6)HR-5	COUNTY	CHAMPAIGN	TOTAL SHEETS	63	SHEET NO.	12
						CONTRACT NO.	70750		