

STATE OF ILLINOIS
DEPARTMENT OF TRANSPORTATION
DIVISION OF HIGHWAYS

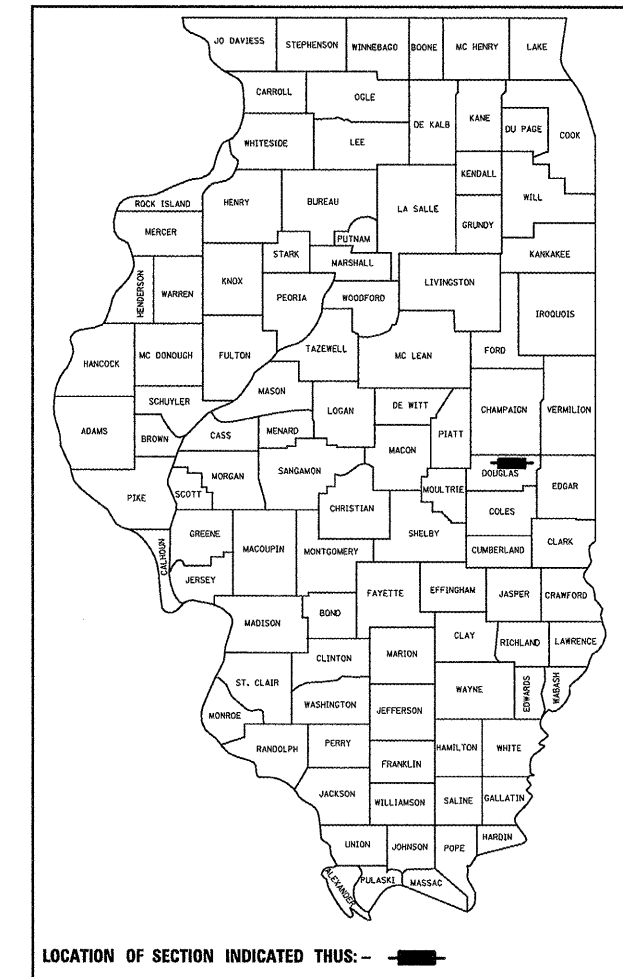
PROPOSED HIGHWAY PLANS

FAS ROUTE 1671 (US 45)
SECTION FY 2010 POSTING MITIGATION

F.A.S. RTE.	SECTION	COUNTY	TOTAL SHEETS	SHEET NO.
1671		DOUGLAS	16	1

*FY 2010 POSTING MITIGATION

D-95-047-09

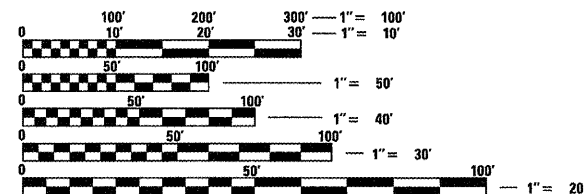


FOR INDEX OF SHEETS, SEE SHEET NO. 2
FOR SUMMARY OF QUANTITIES, SEE SHEET NO. 4

CULVERT REHABILITATION DOUGLAS COUNTY

NORTH OF ARCOLA
C-95-047-09

CURRENT ADT
MAJOR COLLECTOR
FAS 1671 (US 45) = 1900 (2008)
SU = 6.5% MU = 7.1%



FULL SIZE PLANS HAVE BEEN PREPARED USING STANDARD ENGINEERING SCALES. REDUCED SIZED PLANS WILL NOT CONFORM TO STANDARD SCALES. IN MAKING MEASUREMENTS ON REDUCED PLANS, THE ABOVE SCALES MAY BE USED.

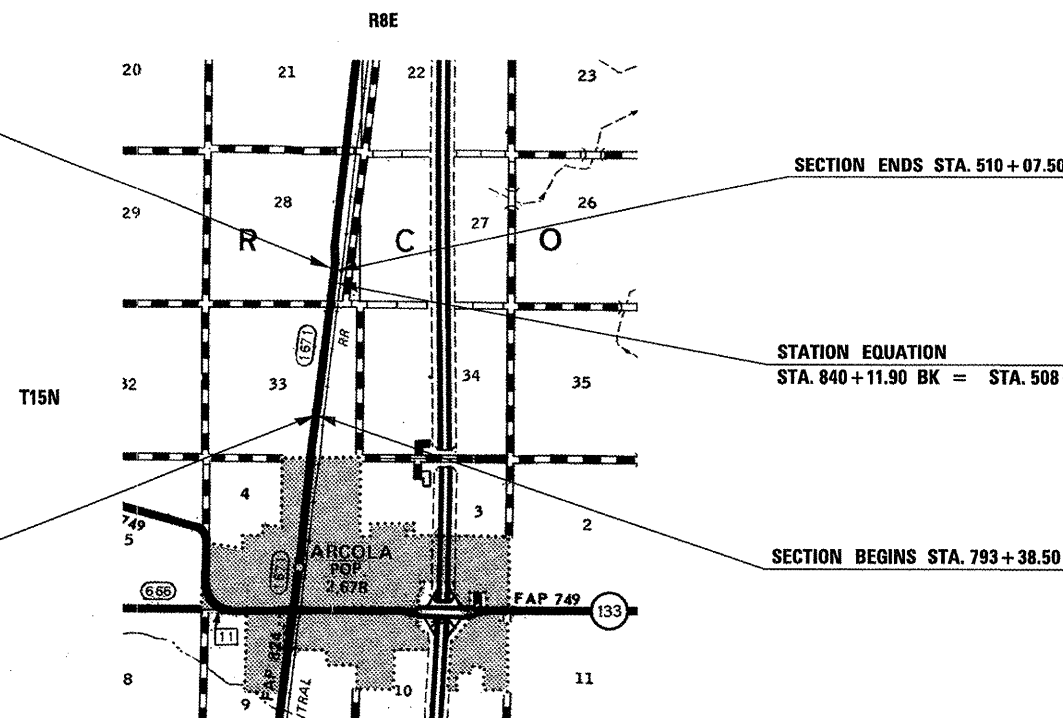
J.U.L.I.E.
JOINT UTILITY LOCATION INFORMATION FOR EXCAVATION TOWNSHIPS
1-800-892-0123 OR 811
TOWNSHIPS
ARCOLA

PROJECT ENGINEER: NANCY FASIG
SQUAD LEADER: STEVE COOMBES
(217) 465-4181
CONTRACT NO. 70814

EXIST SN 021-8046
10' X 3' BOX CULVERT
STA. 510+01.00



EXIST SN 021-8047
8' X 2' BOX CULVERT
STA. 793+44.00



SECTION ENDS STA. 510+07.50

STATION EQUATION
STA. 840+11.90 BK = STA. 508+63.00 AH

SECTION BEGINS STA. 793+38.50

GROSS LENGTH = 4,812.40 FT. = 0.911 MILE
NET LENGTH = 24.00 FT. = 0.005 MILE

STATE OF ILLINOIS
DEPARTMENT OF TRANSPORTATION
DIVISION OF HIGHWAYS

SUBMITTED 1/28 20 10

Judy K. Coover
DEPUTY DIRECTOR OF HIGHWAYS, REGION ENGINEER

March 19, 2010
Scott E. Still PE/10
Acting ENGINEER OF DESIGN AND ENVIRONMENT

March 19, 2010
Christine M. Reed 10
DIRECTOR OF HIGHWAYS, CHIEF ENGINEER

**PRINTED BY THE AUTHORITY
OF THE STATE OF ILLINOIS**