

STATE OF ILLINOIS
DEPARTMENT OF TRANSPORTATION
DIVISION OF HIGHWAYS

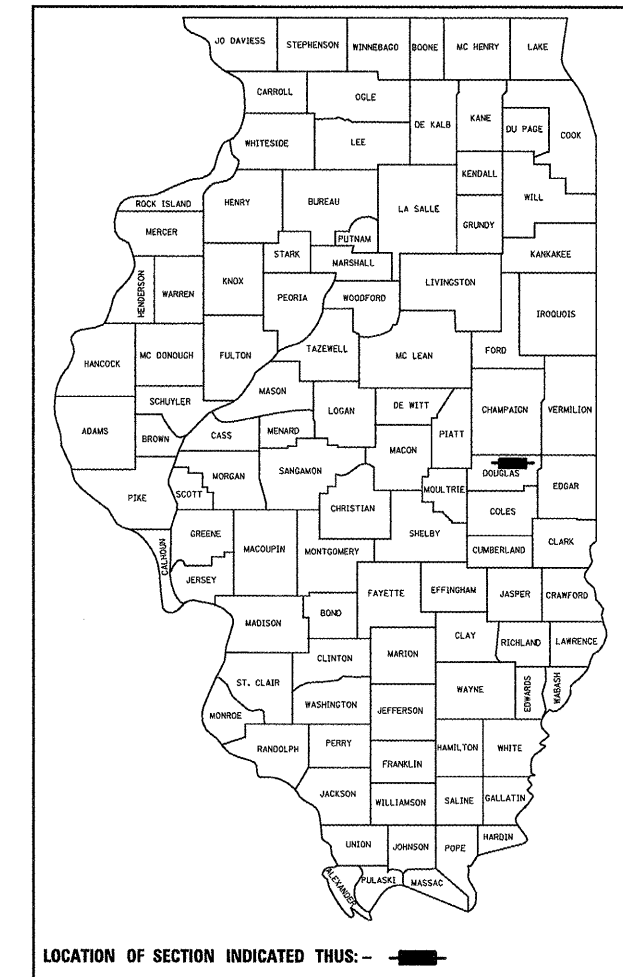
PROPOSED HIGHWAY PLANS

FAS ROUTE 1671 (US 45)
SECTION FY 2010 POSTING MITIGATION

F.A.S. RTE.	SECTION	COUNTY	TOTAL SHEETS	SHEET NO.
1671	*	DOUGLAS	16	1
		ILLINOIS	CONTRACT NO. 70814	

*FY 2010 POSTING MITIGATION

D-95-047-09

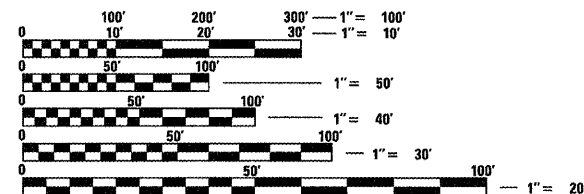


FOR INDEX OF SHEETS, SEE SHEET NO. 2
FOR SUMMARY OF QUANTITIES, SEE SHEET NO. 4

CULVERT REHABILITATION DOUGLAS COUNTY

NORTH OF ARCOLA
C-95-047-09

CURRENT ADT
MAJOR COLLECTOR
FAS 1671 (US 45) = 1900 (2008)
SU = 6.5% MU = 7.1%



FULL SIZE PLANS HAVE BEEN PREPARED USING STANDARD ENGINEERING SCALES. REDUCED SIZED PLANS WILL NOT CONFORM TO STANDARD SCALES. IN MAKING MEASUREMENTS ON REDUCED PLANS, THE ABOVE SCALES MAY BE USED.

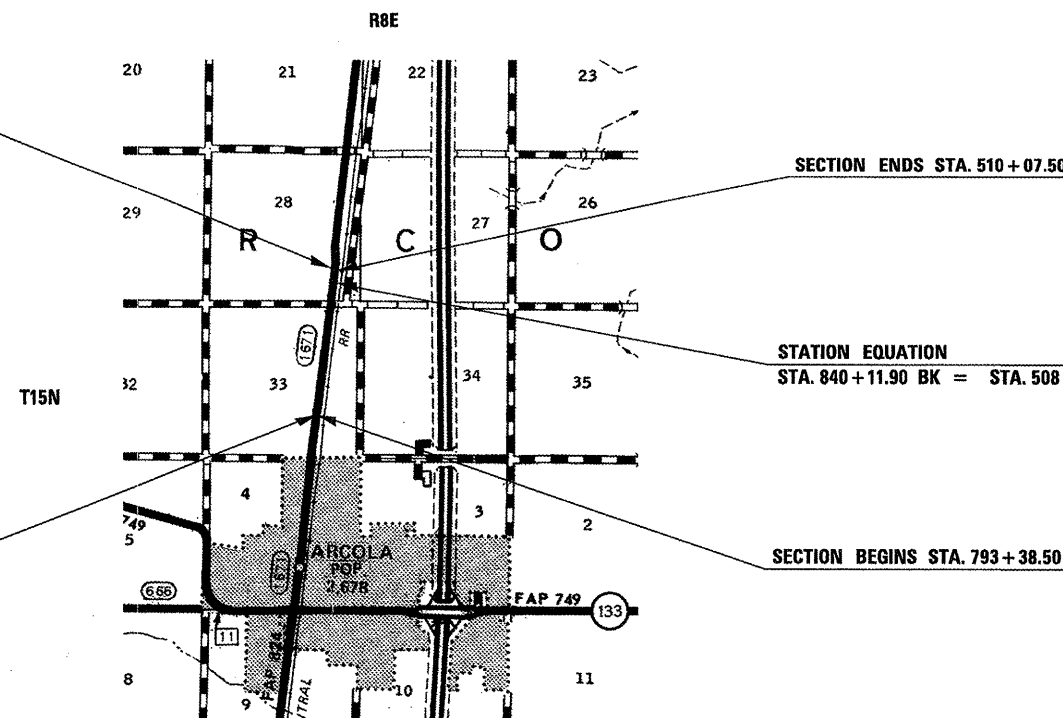
J.U.L.I.E.
JOINT UTILITY LOCATION INFORMATION FOR EXCAVATION
1-800-892-0123 TOWNSHIPS
OR 811 ARCOLA

PROJECT ENGINEER: NANCY FASIG
SQUAD LEADER: STEVE COOMBS
(217) 465-4181
CONTRACT NO. 70814

EXIST SN 021-8046
10' X 3' BOX CULVERT
STA. 510+01.00



EXIST SN 021-8047
8' X 2' BOX CULVERT
STA. 793+44.00



SECTION ENDS STA. 510+07.50

STATION EQUATION
STA. 840+11.90 BK = STA. 508+63.00 AH

SECTION BEGINS STA. 793+38.50

GROSS LENGTH = 4,812.40 FT. = 0.911 MILE
NET LENGTH = 24.00 FT. = 0.005 MILE

STATE OF ILLINOIS
DEPARTMENT OF TRANSPORTATION
DIVISION OF HIGHWAYS

SUBMITTED 1/28 20 10

Joyelle A. Coover
DEPUTY DIRECTOR OF HIGHWAYS, REGION ENGINEER

March 19 20 10
Scott E. Stitt PE/10
Acting ENGINEER OF DESIGN AND ENVIRONMENT

March 19 20 10
Christine M. Reed/10
DIRECTOR OF HIGHWAYS, CHIEF ENGINEER

**PRINTED BY THE AUTHORITY
OF THE STATE OF ILLINOIS**

INDEX OF SHEETS

SHEET	DESCRIPTION
1	COVER SHEET
2	INDEX OF SHEETS & LIST OF HIGHWAY STANDARDS
3	GENERAL NOTES & EXISTING TYPICAL CROSS SECTION
4	SUMMARY OF QUANTITIES
5	PLAN SHEET
6	S.N. 021-8047 SLAB DETAILS
7	S.N. 021-8046 SLAB DETAILS
8 - 11	ROAD CLOSURE DETOUR DETAILS
12	TRAFFIC CONTROL & PROTECTION DEVICES (ROAD & SIDEROAD/STREET CLOSURE) DETAIL
13-16	PAVEMENT MARKING AND MARKERS (RURAL & URBAN APPLICATIONS) DETAIL

LIST OF HIGHWAY STANDARDS

STANDARD	DESCRIPTION
000001-05	STANDARD SYMBOLS, ABBREVIATIONS AND PATTERNS
001001-02	AREAS OF REINFORCEMENT BARS
001006	DECIMAL OF AN INCH AND OF A FOOT
701901-01	TRAFFIC CONTROL DEVICES
780001-02	TYPICAL PAVEMENT MARKINGS

*FY 2010 POSTING MITIGATION

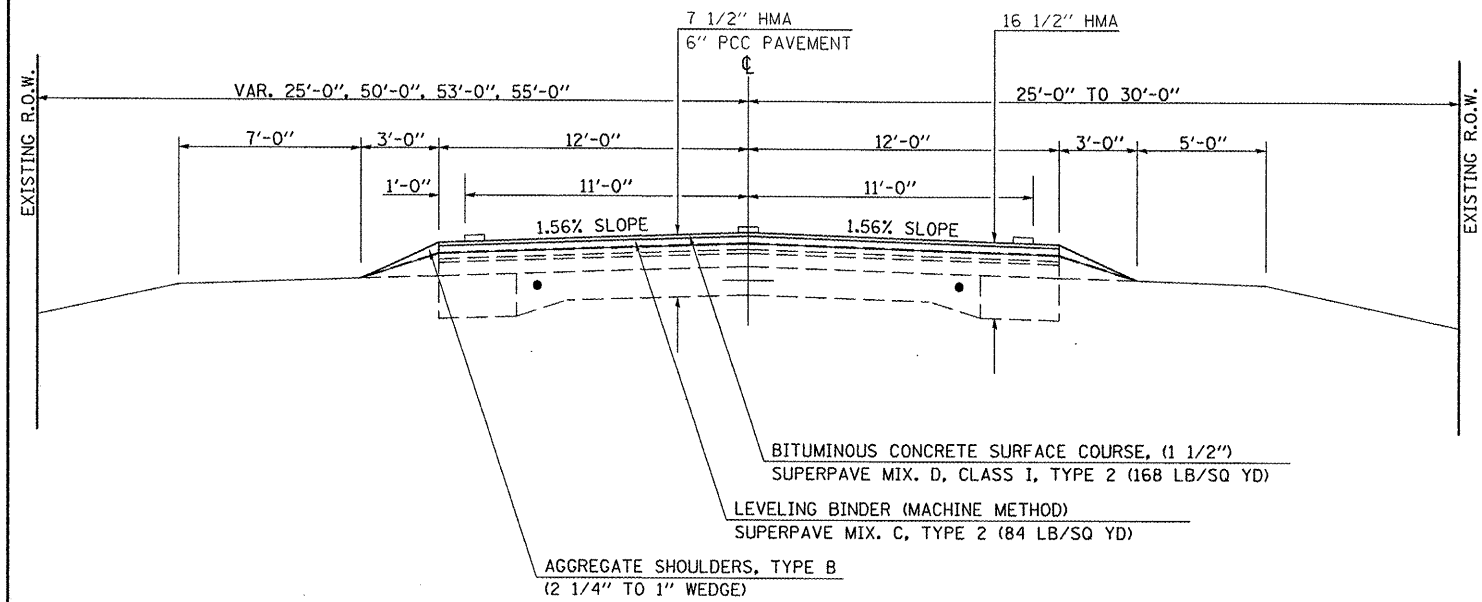
FILE NAME =	USER NAME = coombessf	DESIGNED -	REVISED -	STATE OF ILLINOIS DEPARTMENT OF TRANSPORTATION	INDEX OF SHEET & LIST OF HIGHWAY STANDARDS	F.A.S. RTE.	SECTION	COUNTY	TOTAL SHEETS	SHEET NO.
c:\pw_work\PWIDOT\COOMBESSF\0180209\0	70814-shr-gennote.dgn	DRAWN -	REVISED -			1671	*	DOUGLAS	16	2
PLOT SCALE = 40.0000' / IN.	CHECKED -	REVISED -	CONTRACT NO. 70814							
PLOT DATE = 1/27/2010	DATE -	REVISED -	ILLINOIS FED. AID PROJECT							
						SCALE: SHEET NO. OF SHEETS STA. TO STA.				

GENERAL NOTES

G.N.-100
 ENGLISH UNITS OF MEASUREMENT SHALL GOVERN OVER AND SUPERSEDE
 ANY METRIC UNITS SHOWN IN THIS CONTRACT. WHERE INCLUDED,
 METRIC UNITS ARE FOR INFORMATION ONLY.

NO COMMITMENTS

EXISTING TYPICAL CROSS SECTION



*FY 2010 POSTING MITIGATION

FILE NAME =	USER NAME = coombessf	DESIGNED -	REVISED -
c:\pwork\PIWIDOT\COOMBESSF\d0180209\0570814-sht-gennote.dgn		DRAWN -	REVISED -
		CHECKED -	REVISED -
		DATE -	REVISED -

STATE OF ILLINOIS
 DEPARTMENT OF TRANSPORTATION

GENERAL NOTES & EXISTING TYPICAL CROSS SECTION

F.A.S. RTE.	SECTION	COUNTY	TOTAL SHEETS	SHEET NO.
1671	*	DOUGLAS	16	3
CONTRACT NO. 70814				
ILLINOIS FED. AID PROJECT				

SCALE: SHEET NO. OF SHEETS STA. TO STA.

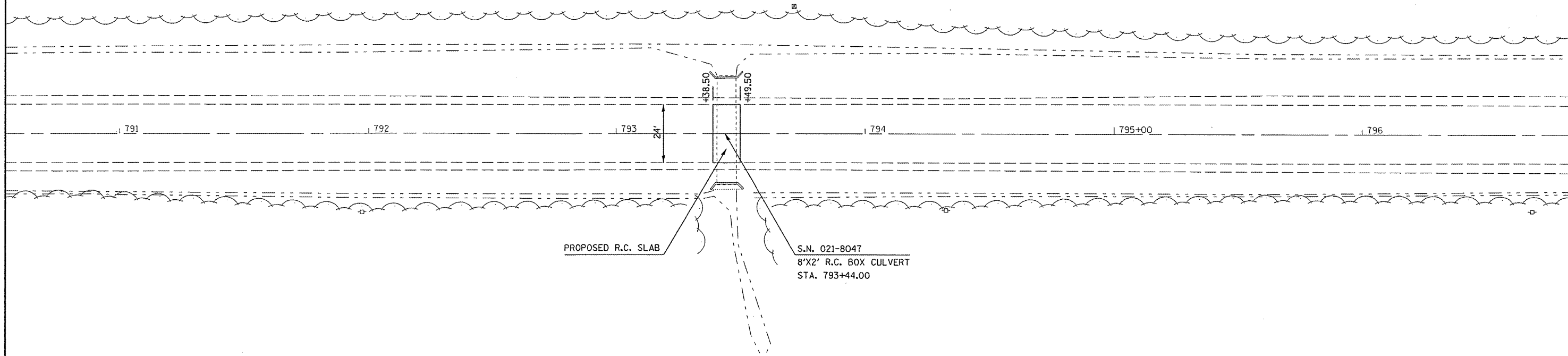
SUMMARY OF QUANTITIES

CODE NO.	DESCRIPTION	CONSTRUCTION TYPE CODE: UNIT	LOCATION OF WORK:		
			DOUGLAS CO. FAS 1671 US 45	DOUGLAS CO. FAS 1671 US 45 S.N. 021-8046	DOUGLAS CO. FAS 1671 US 45 S.N. 021-8047
			FUNDING BREAKOUT: 100 % STATE TOTAL	100 % STATE SFTY-2A	100 % STATE SFTY-2A
			QUANTITY	QUANTITY	QUANTITY
44001005	HOT-MIX ASPHALT SURFACE REMOVAL	SQ YD	64.1	34.7	29.4
50300255	CONCRETE SUPERSTRUCTURE	CU YD	15.3	8.7	6.6
50800205	REINFORCEMENT BARS, EPOXY COATED	POUND	4,110.0	2,200.0	1,910.0
67100100	MOBILIZATION	L SUM	1.0	0.5	0.5
* 78001110	PAINT PAVEMENT MARKING - LINE 4"	FOOT	58.0	36.0	22.0
X0324952	DETOUR SIGNING	L SUM	1.0	0.5	0.5
*SPECIALTY ITEMS					

*FY 2010 POSTING MITIGATION

FILE NAME :	USER NAME : coombessf	DESIGNED -	REVISED -	STATE OF ILLINOIS DEPARTMENT OF TRANSPORTATION	SUMMARY OF QUANTITIES	F.A.S. RTE. 1671	SECTION •	COUNTY DOUGLAS	TOTAL SHEETS 16	SHEET NO. 4
c:\p\work\PWIDOT\COOMBESSF\d0180209\DS70814-aht-500.dgn		DRAWN -	REVISED -							
PLOT SCALE : 40.0000 ' / IN.		CHECKED -	REVISED -							
PLOT DATE : 1/27/2010		DATE -	REVISED -		SCALE:	SHEET NO.	OF	SHEETS	STA.	TO STA.
										ILLINOIS FED. AID PROJECT CONTRACT NO. 70814

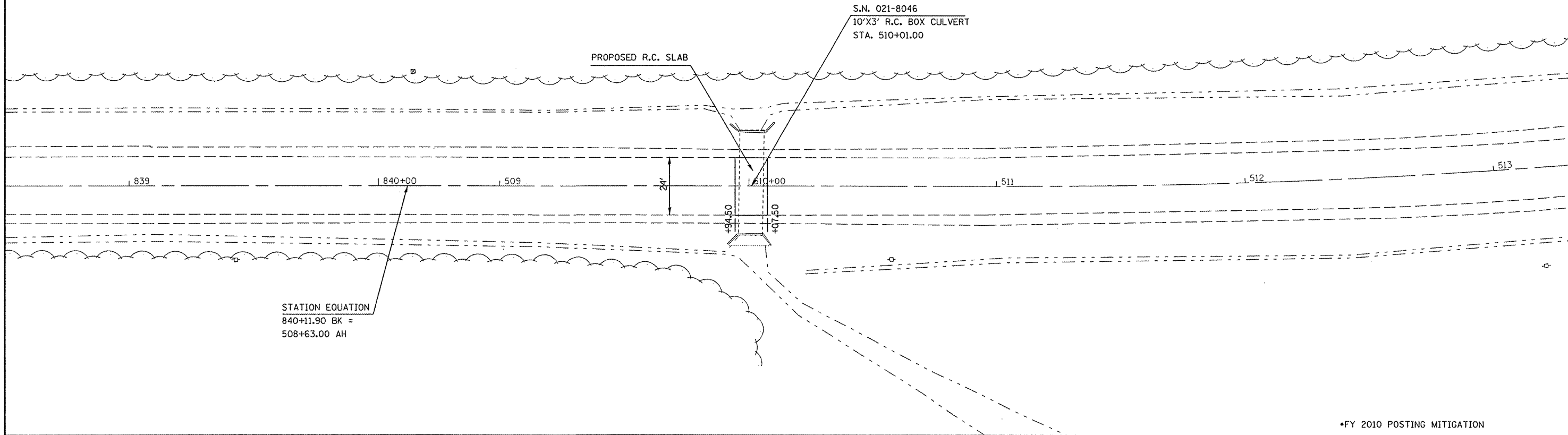
SEC 33, T15N, R8E, 3RD PM



PROPOSED R.C. SLAB

S.N. 021-8047
8'X2' R.C. BOX CULVERT
STA. 793+44.00

SEC 28, T15N, R8E, 3RD PM



PROPOSED R.C. SLAB

S.N. 021-8046
10'X3' R.C. BOX CULVERT
STA. 510+01.00

STATION EQUATION
840+11.90 BK =
508+63.00 AH

*FY 2010 POSTING MITIGATION

FILE NAME =	USER NAME = coombessf	DESIGNED -	REVISED -
c:\p\work\p\WIDOT\C00MBESSF\d0180209\0370814-sht-Plan.dgn		DRAWN -	REVISED -
	PLOT SCALE = 40.0000' / IN.	CHECKED -	REVISED -
	PLOT DATE = 1/27/2010	DATE -	REVISED -

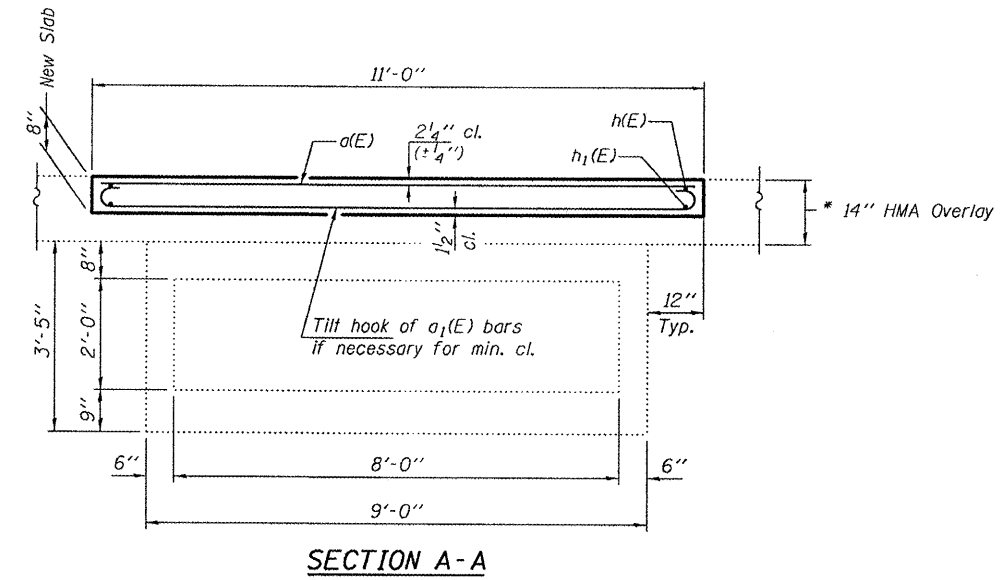
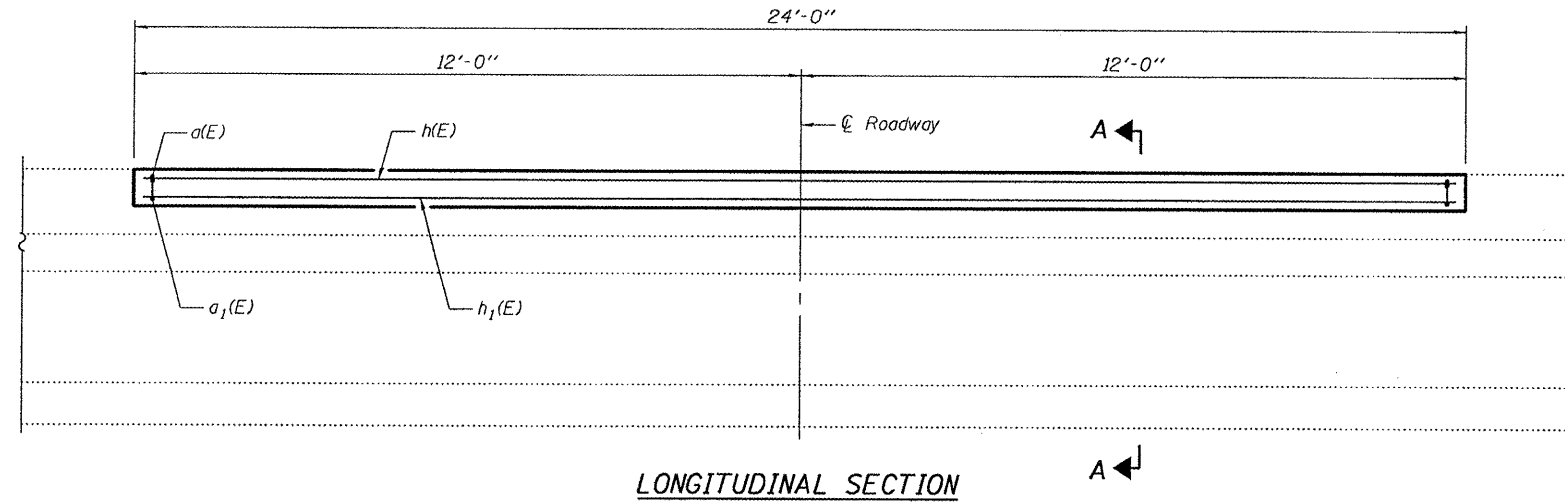
STATE OF ILLINOIS
DEPARTMENT OF TRANSPORTATION

PLAN SHEETS

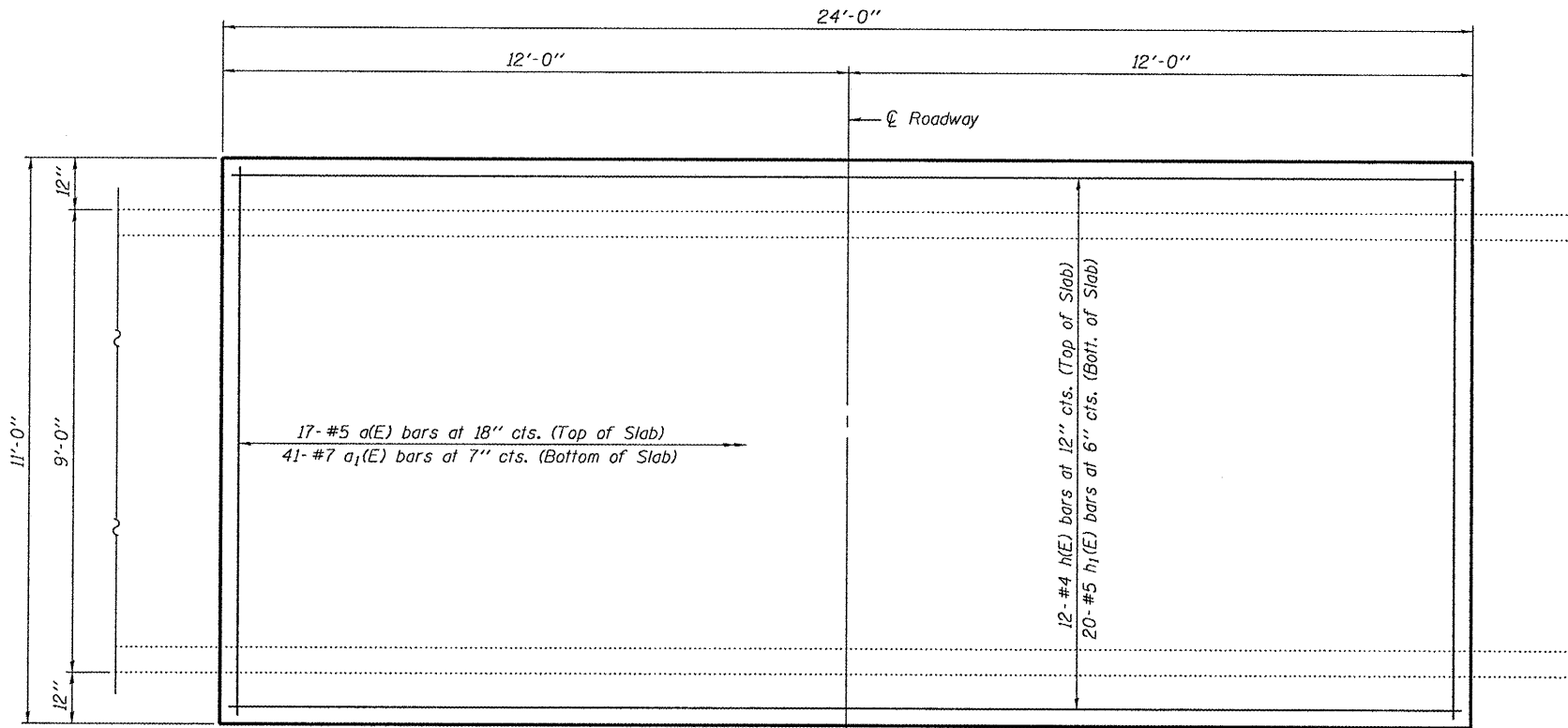
SCALE: SHEET NO. OF SHEETS STA. TO STA.

F.A.S. RTE.	SECTION	COUNTY	TOTAL SHEETS	SHEET NO.
1671	*	DOUGLAS	16	5
CONTRACT NO. 70814				
ILLINOIS FED. AID PROJECT				

STATE OF ILLINOIS
DEPARTMENT OF TRANSPORTATION



* Remove 8" of existing HMA overlay and replace with 8" concrete slab as shown. Thickness verified from 08/27/2008 coring report. Slope to match roadway. Cost of removal included with Hot-Mix Asphalt Surface Removal.



GENERAL NOTES

Plan dimensions and details relative to existing plans are subject to nominal construction variations. The Contractor shall field verify existing dimensions and details affecting new construction and make necessary approved adjustments prior to construction or ordering of materials. Such variations shall not be cause for additional compensation for a change in scope of the work, however, the Contractor will be paid for the quantity actually furnished at the unit price bid for the work.

Reinforcement bars shall conform to the requirements of ASTM A 706 Gr 60. See Special Provisions.

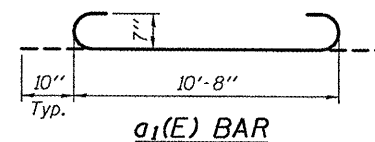
Reinforcement bars designated (E) shall be epoxy coated. The deck surface shall have its final finish tined according to Article 420.09(e)(1) of the Standard Specifications. Cost included with Concrete Superstructure.

BILL OF MATERIAL

Bar	No.	Size	Length	Shape
a(E)	17	#5	10'-8"	—
a1(E)	41	#7	12'-4"	U
h(E)	12	#4	23'-8"	—
h1(E)	20	#5	23'-8"	—
Hot-Mix Asphalt Surface Removal		Sq. Yds.	29.4	
Reinforcement Bars, Epoxy Coated		Pound	1910	
Concrete Superstructure		Cu. Yds.	6.6	

DESIGN STRESSES

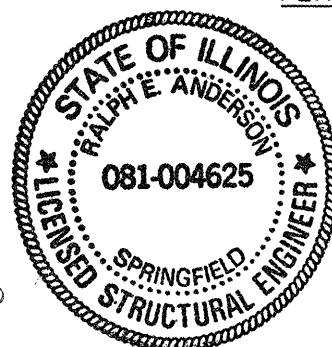
FIELD UNITS
f'c = 3,500 psi
fy = 60,000 psi (Reinf.)



SLAB DETAILS
SN 021-8047

DESIGNED	V. K. Vala
CHECKED	[Signature]
DRAWN	baliva
CHECKED	VHV [Signature]

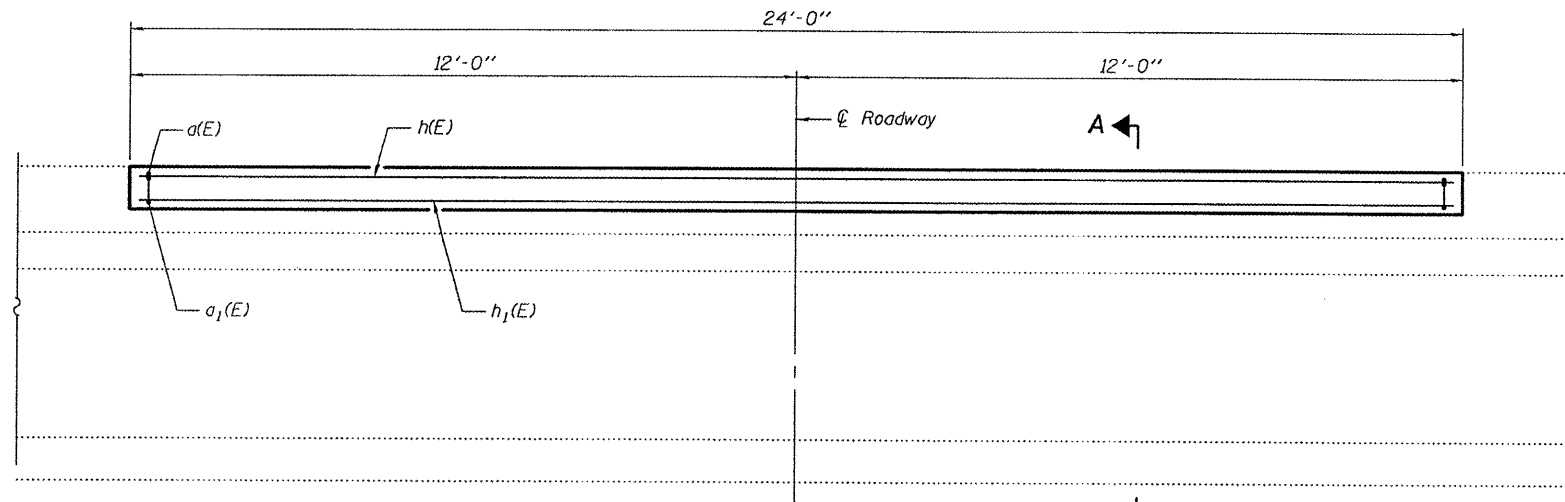
EXAMINED	[Signature]	FEBRUARY 10, 2010
PASSED	[Signature]	



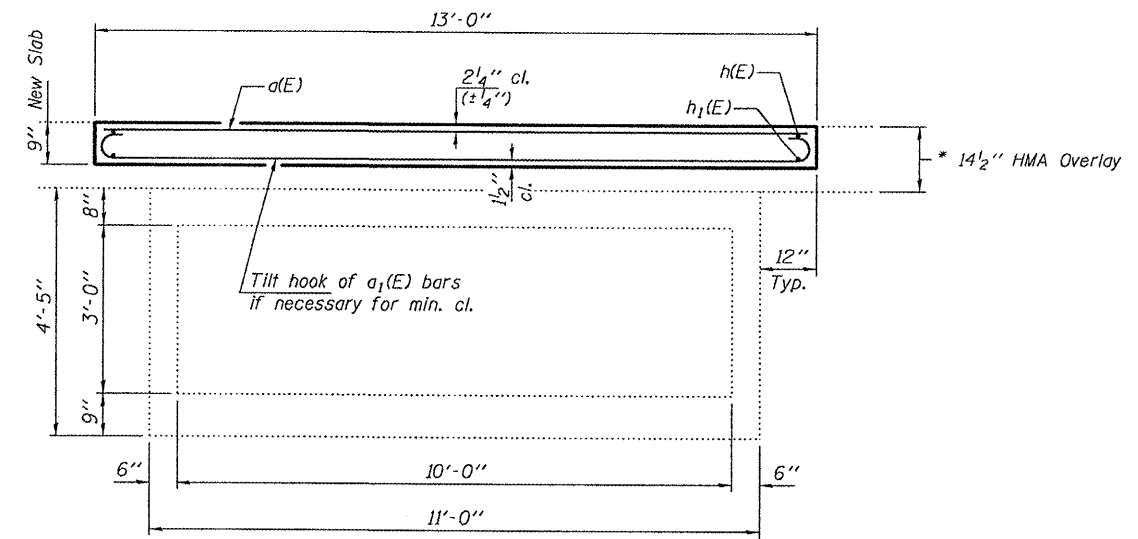
Expires: November 30, 2010

SHEET NO. 1 1 SHEETS	F.A.S. RTE.	SECTION	COUNTY	TOTAL SHEETS	SHEET NO.
	1671	FY 2010 POSTING MITIGATION	DOUGLAS	16	6
FED. ROAD DIST. NO.		ILLINOIS FED. AID PROJECT			

STATE OF ILLINOIS
DEPARTMENT OF TRANSPORTATION

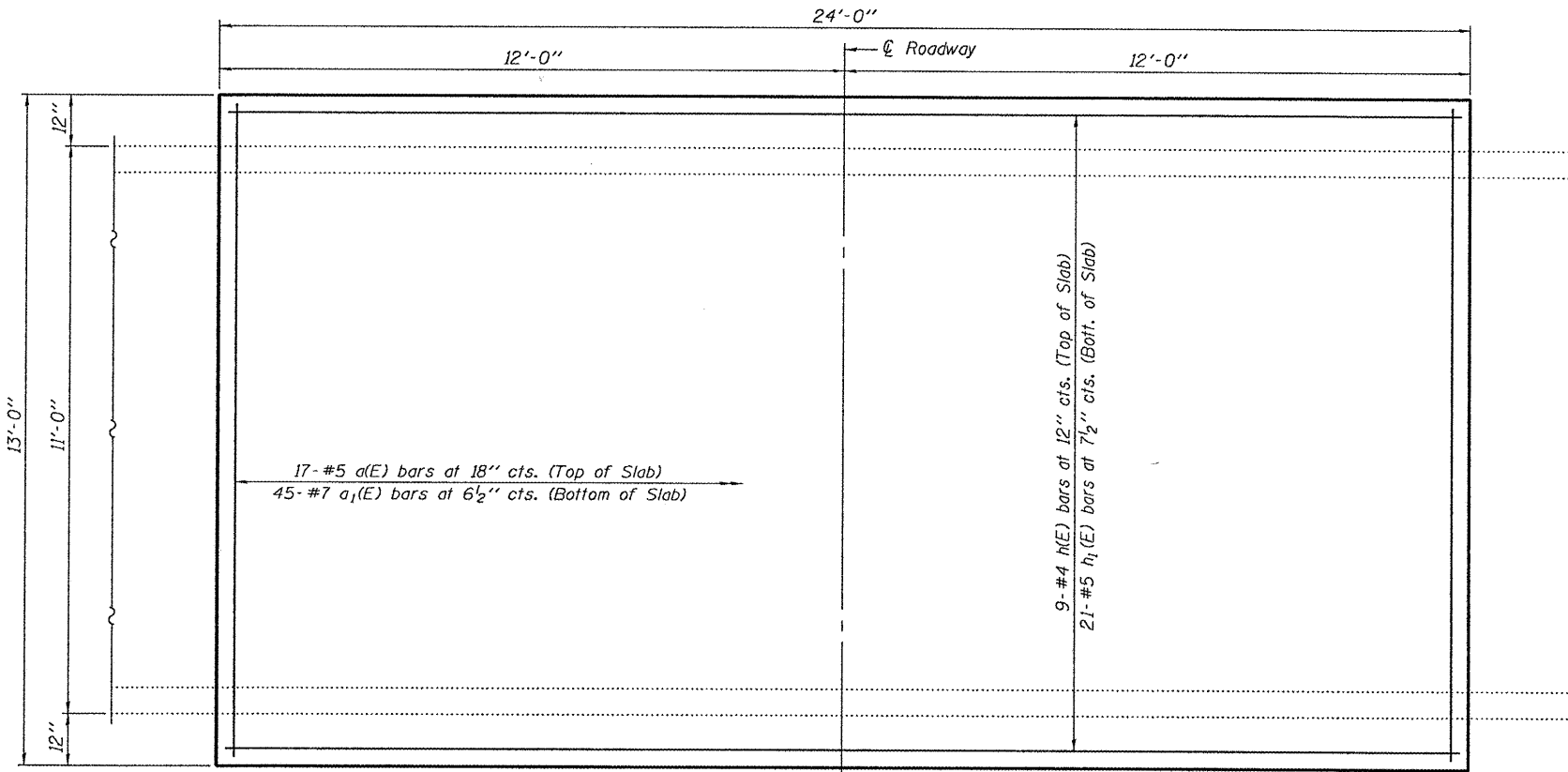


LONGITUDINAL SECTION



SECTION A-A

* Remove 9" of existing HMA overlay and replace with 9" concrete slab as shown. Thickness verified from 08/27/2008 coring report. Slope to match roadway. Cost of removal included with Hot-Mix Asphalt Surface Removal.



PLAN

GENERAL NOTES

Plan dimensions and details relative to existing plans are subject to nominal construction variations. The Contractor shall field verify existing dimensions and details affecting new construction and make necessary approved adjustments prior to construction or ordering of materials. Such variations shall not be cause for additional compensation for a change in scope of the work, however, the Contractor will be paid for the quantity actually furnished at the unit price bid for the work.

Reinforcement bars shall conform to the requirements of ASTM A 706 Gr 60. See Special Provisions.

Reinforcement bars designated (E) shall be epoxy coated.

The deck surface shall have its final finish tined according to Article 420.09(e)(1) of the Standard Specifications. Cost included with Concrete Superstructure.

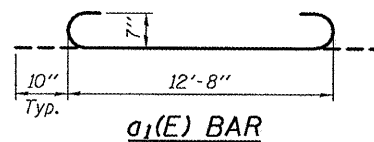
BILL OF MATERIAL

Bar	No.	Size	Length	Shape
a(E)	17	#5	12'-8"	—
a1(E)	45	#7	14'-4"	U
h(E)	9	#4	23'-8"	—
h1(E)	21	#5	23'-8"	—
Hot-Mix Asphalt Surface Removal		Sq. Yds.	34.7	
Reinforcement Bars, Epoxy Coated		Pound	2200	
Concrete Superstructure		Cu. Yds.	8.7	

DESIGN STRESSES

FIELD UNITS

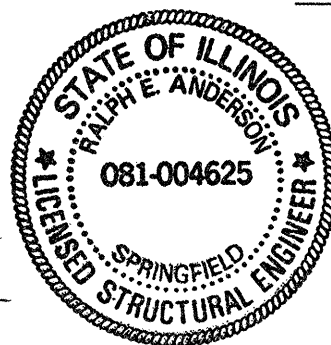
f'c = 3,500 psi
fy = 60,000 psi (Reinf.)



SLAB DETAILS
SN 021-8046

DESIGNED *V. C. H. Veliz*
CHECKED *[Signature]*
DRAWN *baliva*
CHECKED *[Signature]*

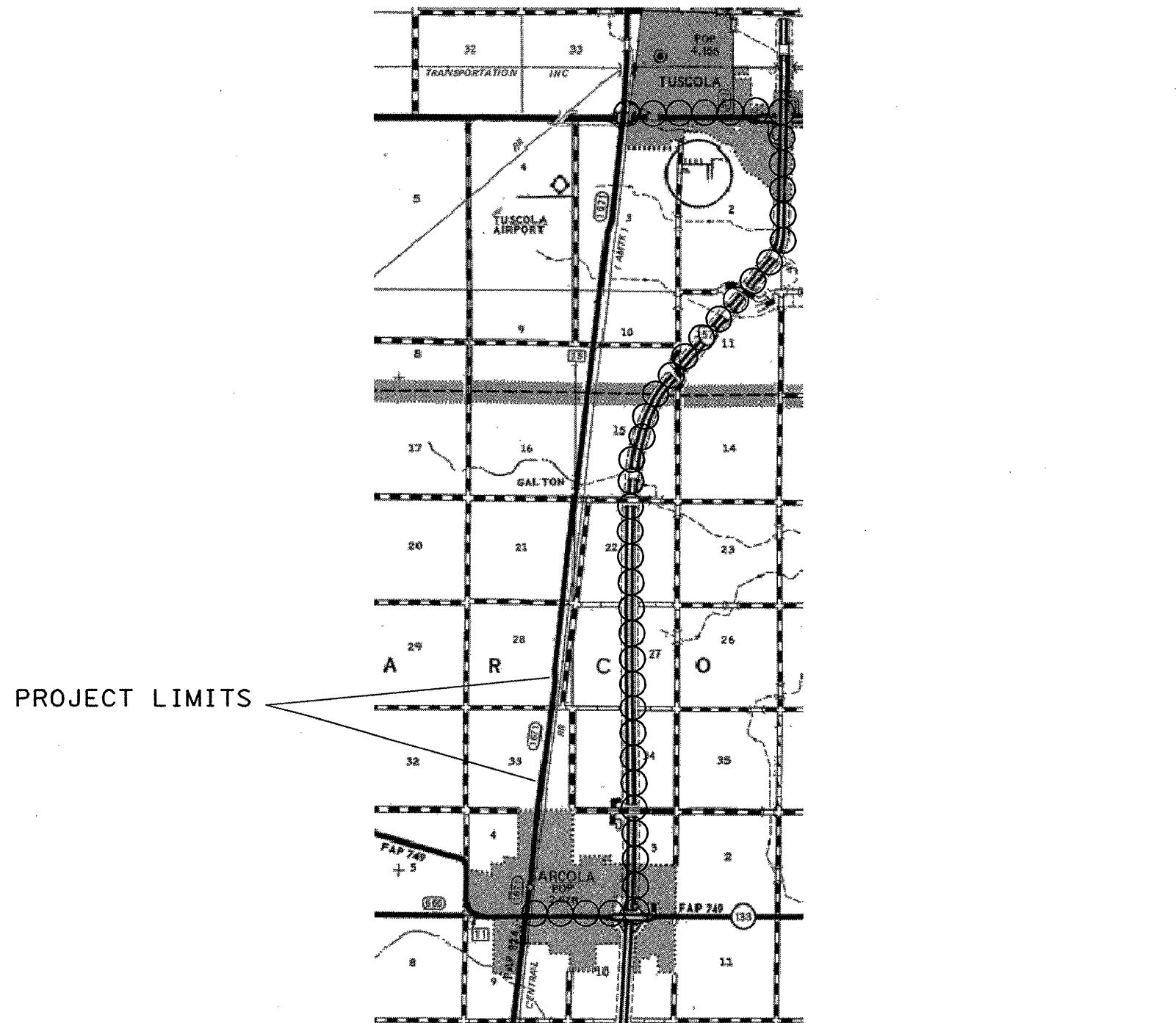
FEBRUARY 10, 2010
EXAMINED *[Signature]*
PASSED *Ralph E. Anderson*
ENGINEER OF STRUCTURAL SERVICES
ENGINEER OF BRIDGES AND STRUCTURES



Expires: November 30, 2010

SHEET NO. 1 1 SHEETS	F.A.S. RTE.	SECTION	COUNTY	TOTAL SHEETS	SHEET NO.
	1671	FY 2010 POSTING MITIGATION	DOUGLAS	16	7
		CONTRACT NO. 70814			
FED. ROAD DIST. NO.		ILLINOIS FED. AID PROJECT			

ROAD CLOSURE DETOUR DETAIL



PROJECT LIMITS



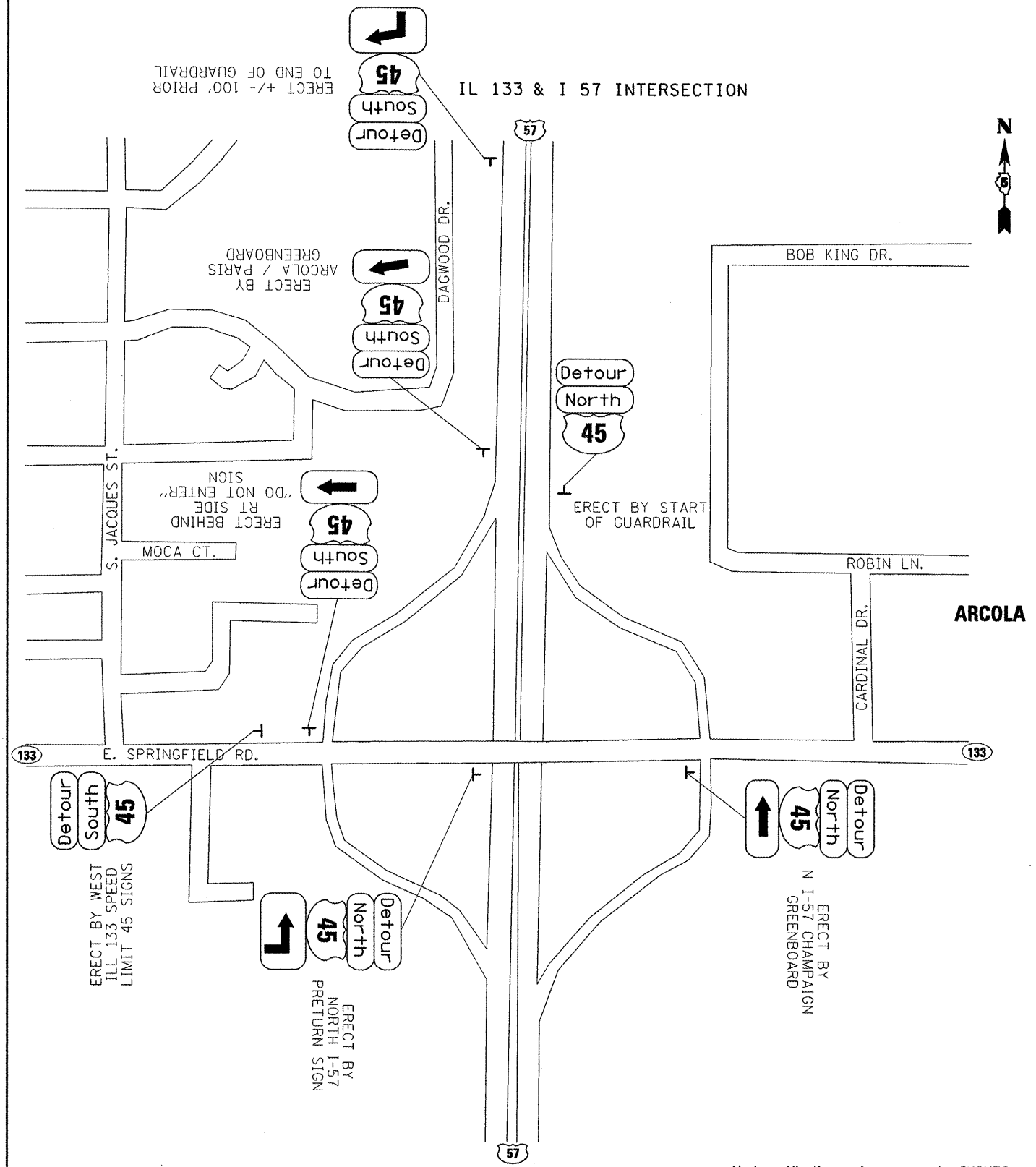
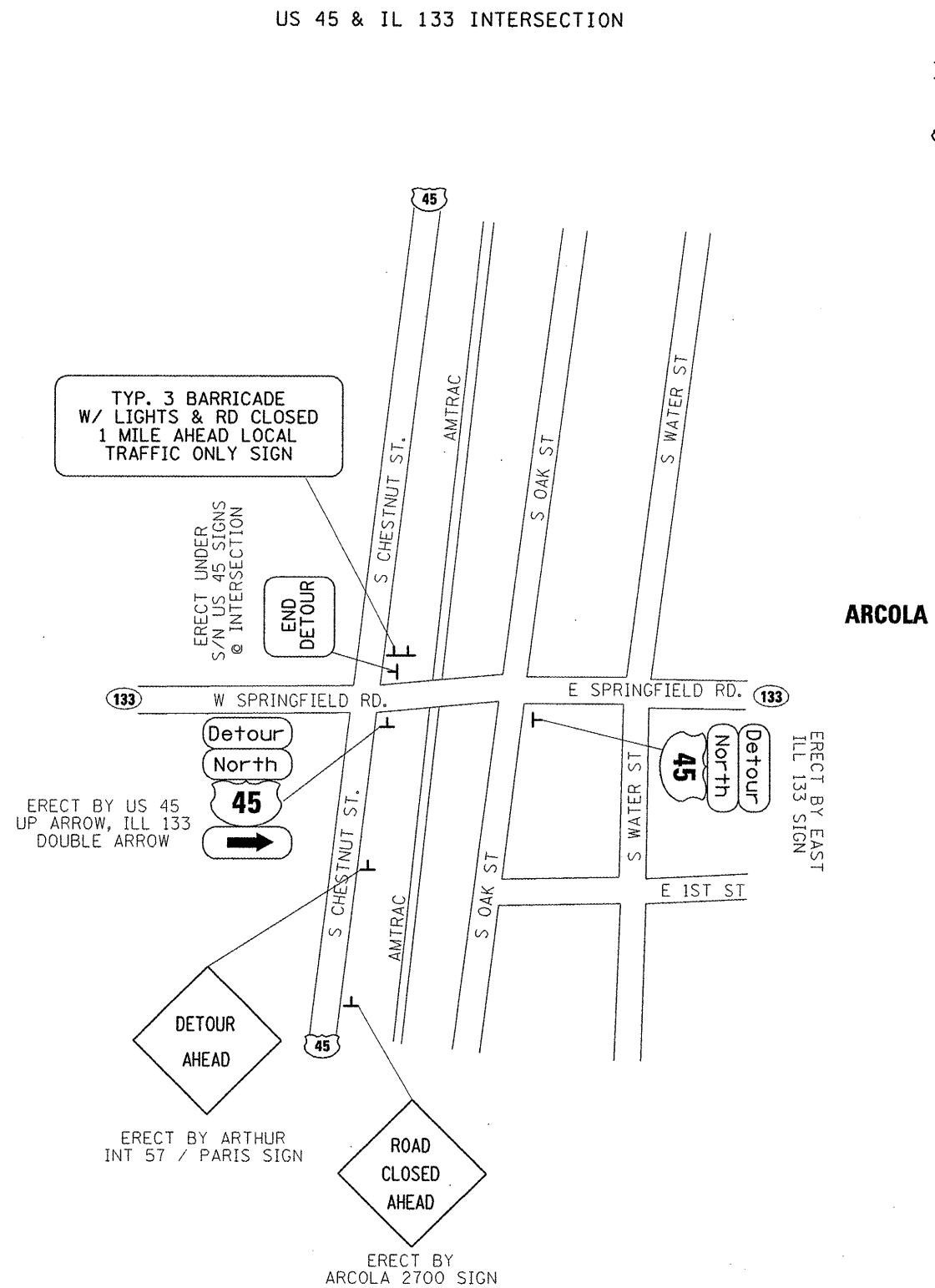
DETAIL NOTE:
 ALL DETOUR SIGN LOCATIONS ARE SUBJECT TO FIELD ADJUSTMENTS IN CASE OF CONFLICTS, ANY ADJUSTMENTS WILL BE COORDINATED BY THE ENGINEER, THE CONTRACTOR, AND THE BUREAU OF OPERATIONS TRAFFIC CONTROL SUPERVISOR PRIOR TO ROAD CLOSURE.

MARKED DETOUR ROUTE ○○○○

Note: All dimensions are in INCHES (millimeters) unless otherwise shown.
 *FY 2010 POSTING MITIGATION

FILE NAME =	USER NAME = coombessf	DESIGNED -	REVISED -	STATE OF ILLINOIS DEPARTMENT OF TRANSPORTATION	ROAD CLOSURE DETOUR DETAIL	F.A.S. RTE. 1671	SECTION *	COUNTY DOUGLAS	TOTAL SHEETS 16	SHEET NO. 8
ct:\p\work\PM1001\COOMBESSF\0100209\070914-sht-detail.dgn		DRAWN -	REVISED -			CONTRACT NO. 70814		ILLINOIS FED. AID PROJECT		
PLOT SCALE = 40.0000 / IN.		CHECKED -	REVISED -		SCALE:	SHEET NO.	OF	SHEETS	STA.	TO STA.
PLOT DATE = 1/27/2010		DATE -	REVISED -							

ROAD CLOSURE DETOUR DETAIL



Note: All dimensions are in INCHES (millimeters) unless otherwise shown.
 *FY 2010 POSTING MITIGATION

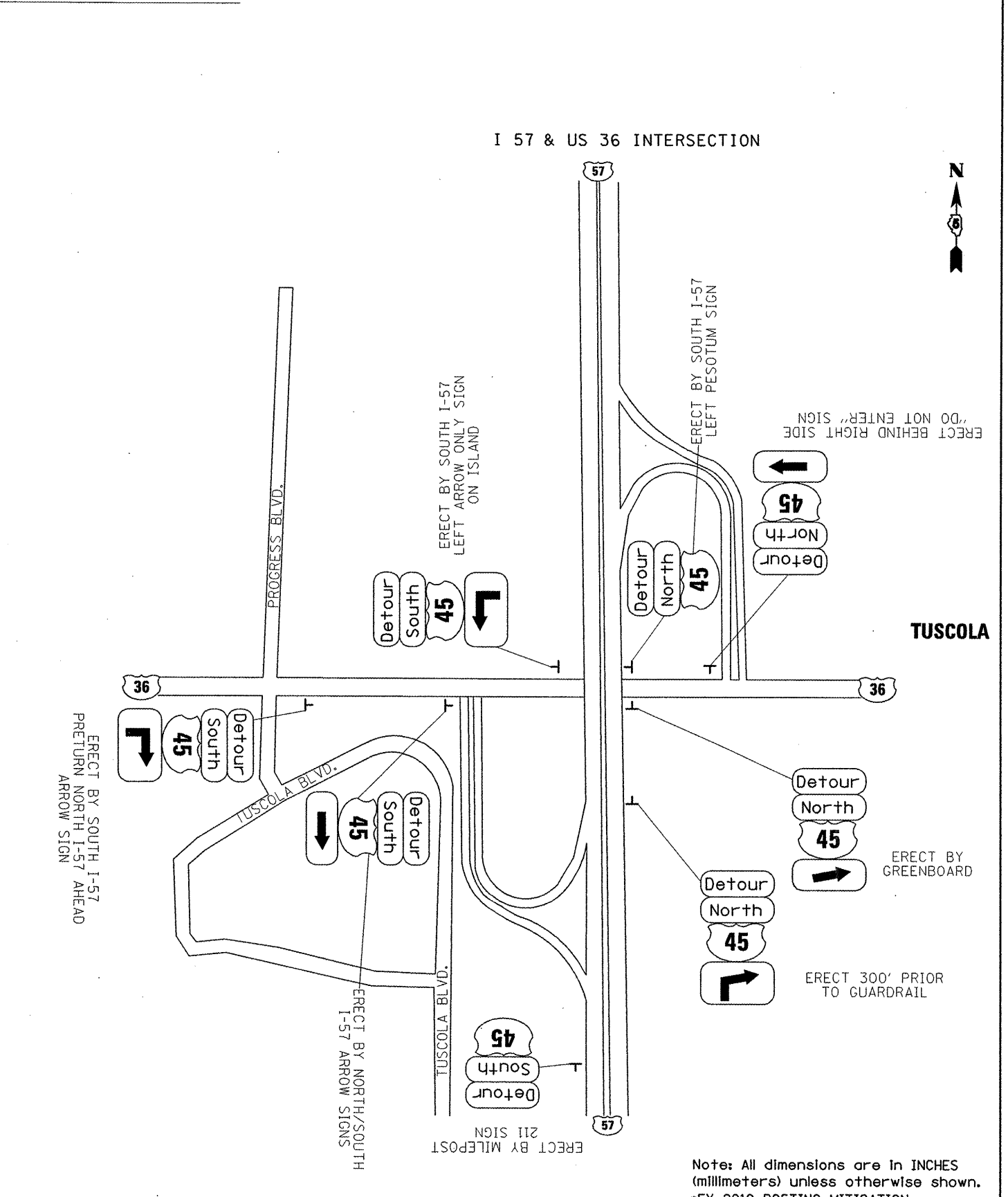
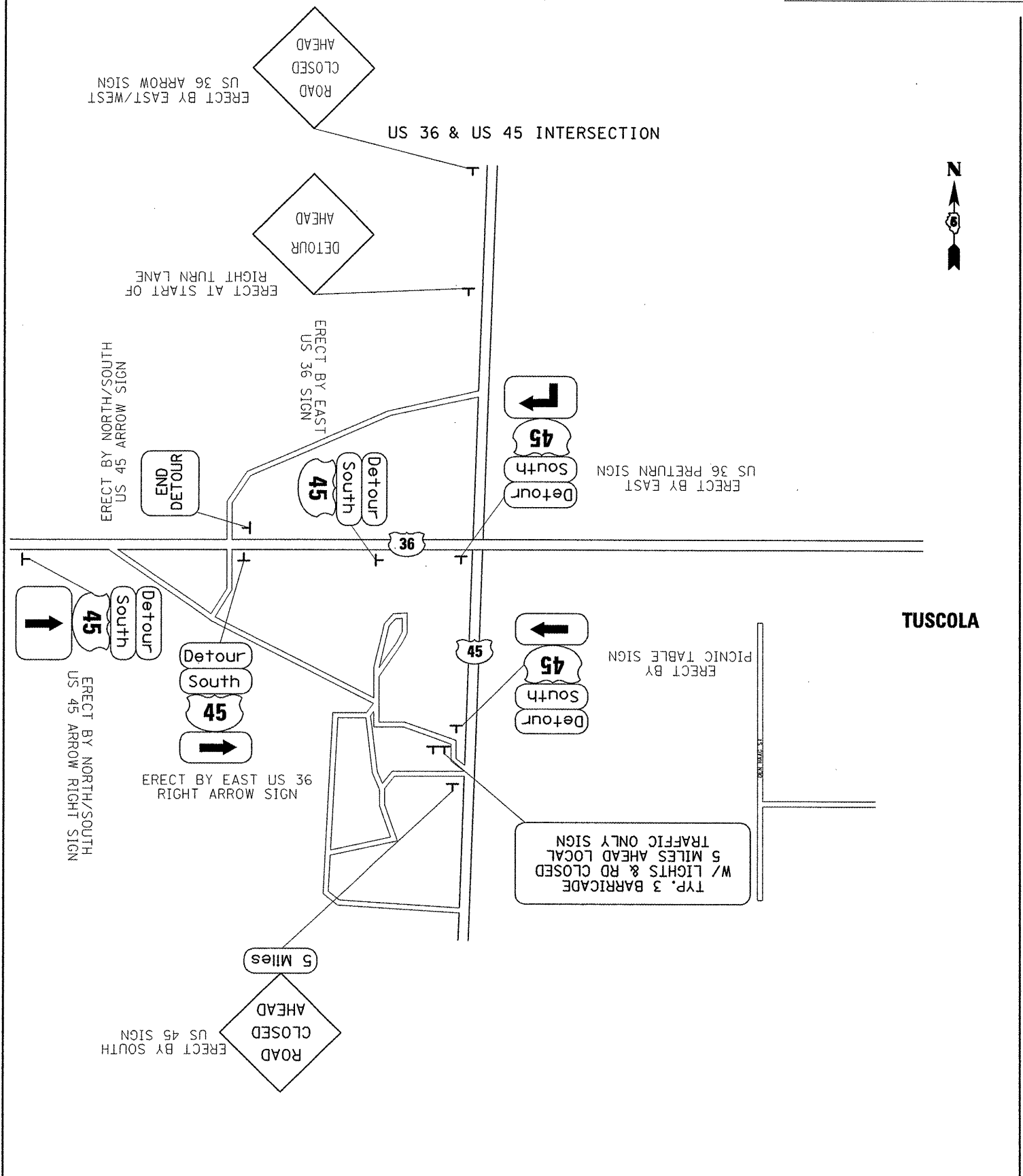
FILE NAME =	USER NAME = coombessf	DESIGNED -	REVISED -
c:\p\work\p\1001\COOMBESSF\0180209\0570814-sht-details.dgn		DRAWN -	REVISED -
		CHECKED -	REVISED -
		DATE -	REVISED -

STATE OF ILLINOIS
DEPARTMENT OF TRANSPORTATION

ROAD CLOSURE DETOUR DETAIL				
SCALE:	SHEET NO.	OF	SHEETS	STA. TO STA.

F.A.S. RTE.	SECTION	COUNTY	TOTAL SHEETS	SHEET NO.
1671		DOUGLAS	16	9
CONTRACT NO. 70814				
ILLINOIS FED. AID PROJECT				

ROAD CLOSURE DETOUR DETAIL



Note: All dimensions are in INCHES (millimeters) unless otherwise shown.
 *FY 2010 POSTING MITIGATION

FILE NAME =	USER NAME = coombessf	DESIGNED -	REVISED -
c:\pwwork\pwidot\COOMBESSF\d0180209\1570814-sht-det01a.dgn		DRAWN -	REVISED -
		CHECKED -	REVISED -
		DATE -	REVISED -

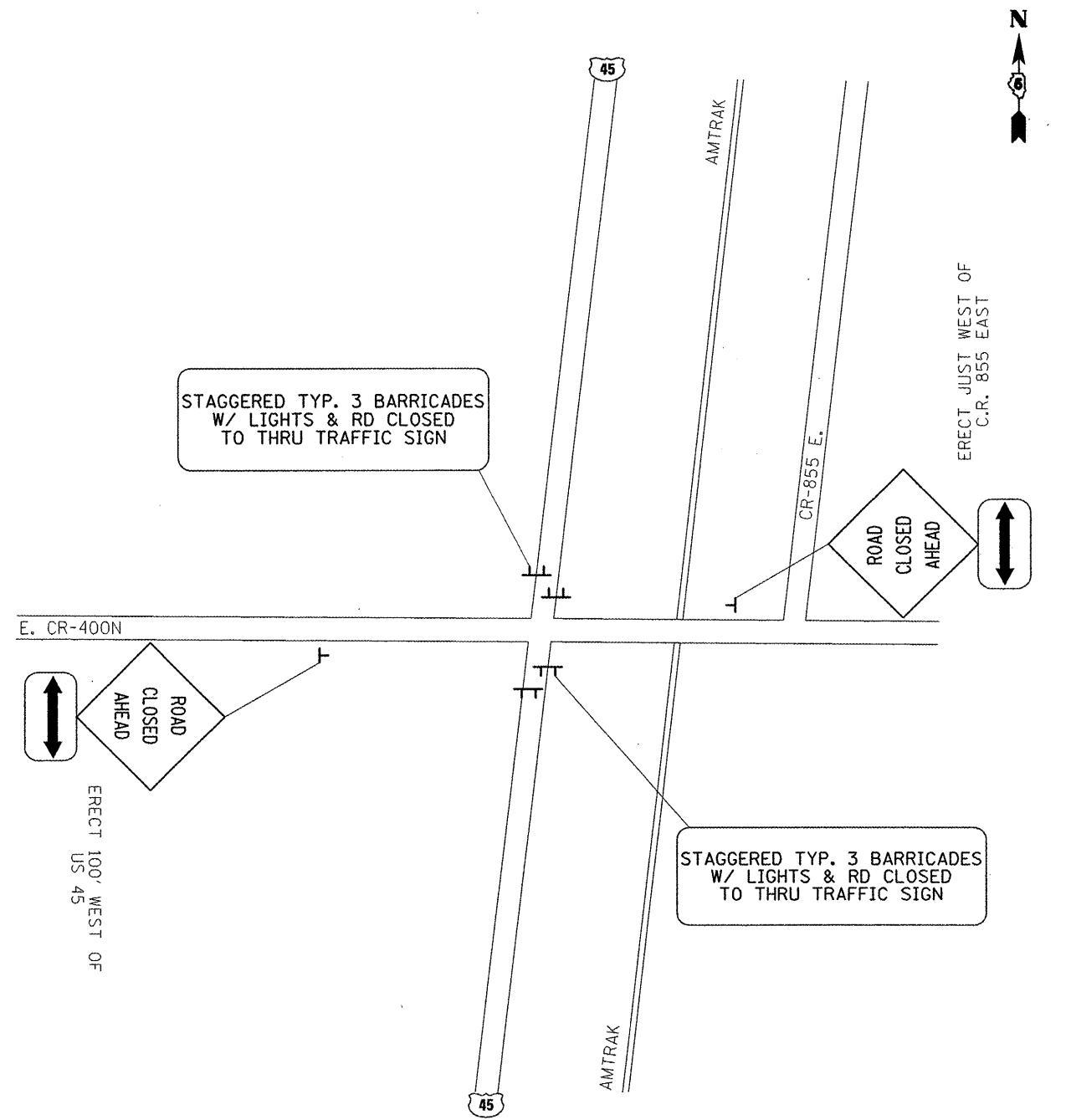
STATE OF ILLINOIS
DEPARTMENT OF TRANSPORTATION

ROAD CLOSURE DETOUR DETAIL			
SCALE:	SHEET NO. OF SHEETS	STA. TO STA.	

F.A.S. RTE.	SECTION	COUNTY	TOTAL SHEETS	SHEET NO.
1671		DOUGLAS	16	10
CONTRACT NO. 70814				
ILLINOIS FED. AID PROJECT				

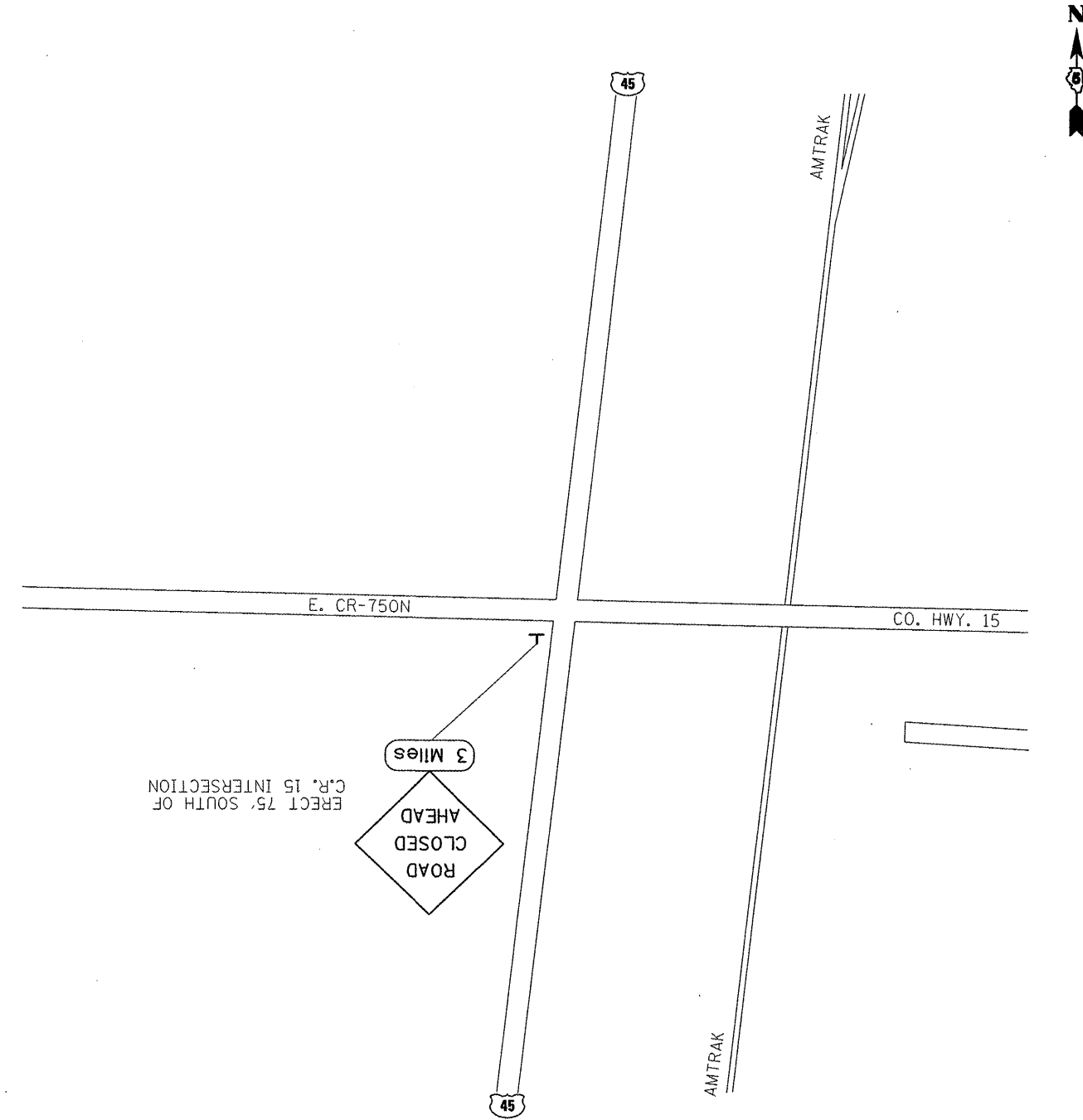
ROAD CLOSURE DETOUR DETAIL

US 45 & E. CR-400N. INTERSECTION



NOTE: TRAFFIC CONTROL DETAILS NOT SHOWN SHALL CONFORM TO THE ROAD CLOSURE DETAIL SHOWN ON DISTRICT 5 DETAIL NO. 70200000, TRAFFIC CONTROL & PROTECTION DEVICES (ROAD & SIDEROAD/STREET CLOSURES), INCLUDED ON PLAN SHEET NO. 12 OF 16.

US 45 & CO. RD. 15 INTERSECTION



Note: All dimensions are in INCHES (millimeters) unless otherwise shown.
*FY 2010 POSTING MITIGATION

FILE NAME =	USER NAME = coombessf	DESIGNED -	REVISED -
c:\pw_work\PW1001\C00MBESSF\0180209\0	70814-sht-details.dgn	DRAWN -	REVISED -
	PLOT SCALE = 40,0000' / IN.	CHECKED -	REVISED -
	PLOT DATE = 1/28/2010	DATE -	REVISED -

**STATE OF ILLINOIS
DEPARTMENT OF TRANSPORTATION**

ROAD CLOSURE DETOUR DETAIL

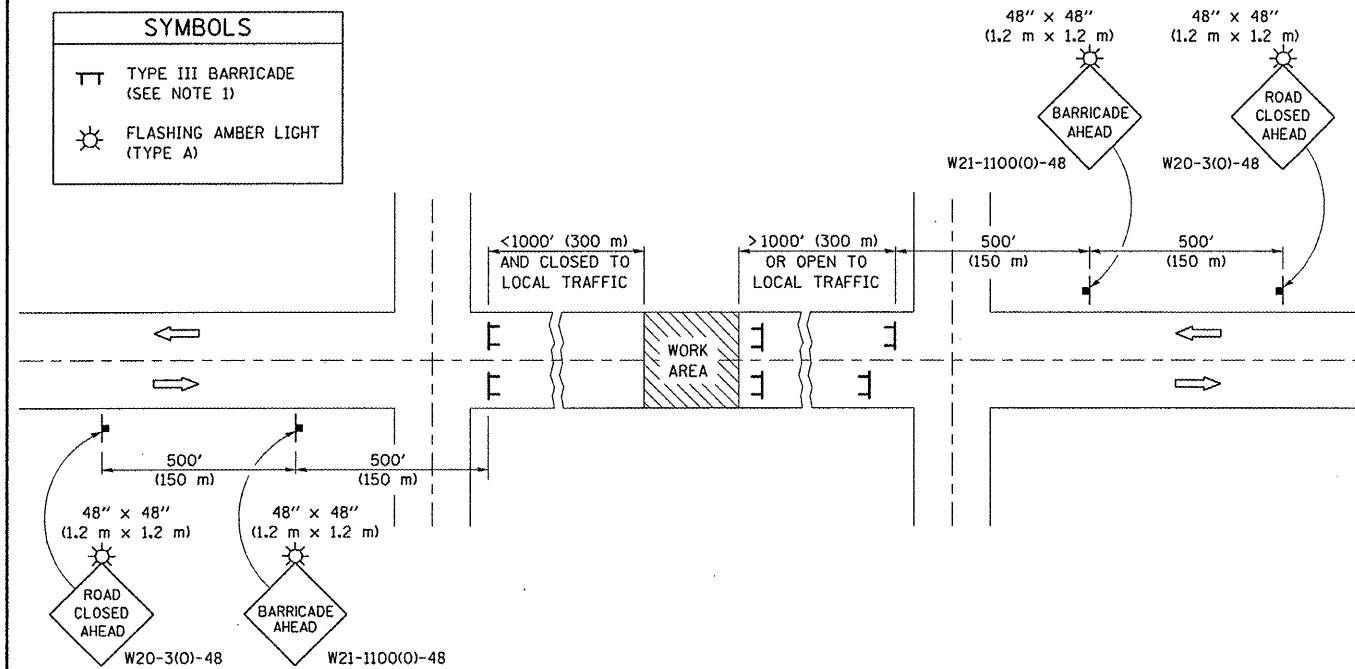
SCALE: SHEET NO. OF SHEETS STA. TO STA.

F.A.S. RTE.	SECTION	COUNTY	TOTAL SHEETS	SHEET NO.
1671	*	DOUGLAS	16	11
CONTRACT NO. 70814				
ILLINOIS FED. AID PROJECT				

ROAD CLOSURE

SIDEROAD / STREET CLOSURE

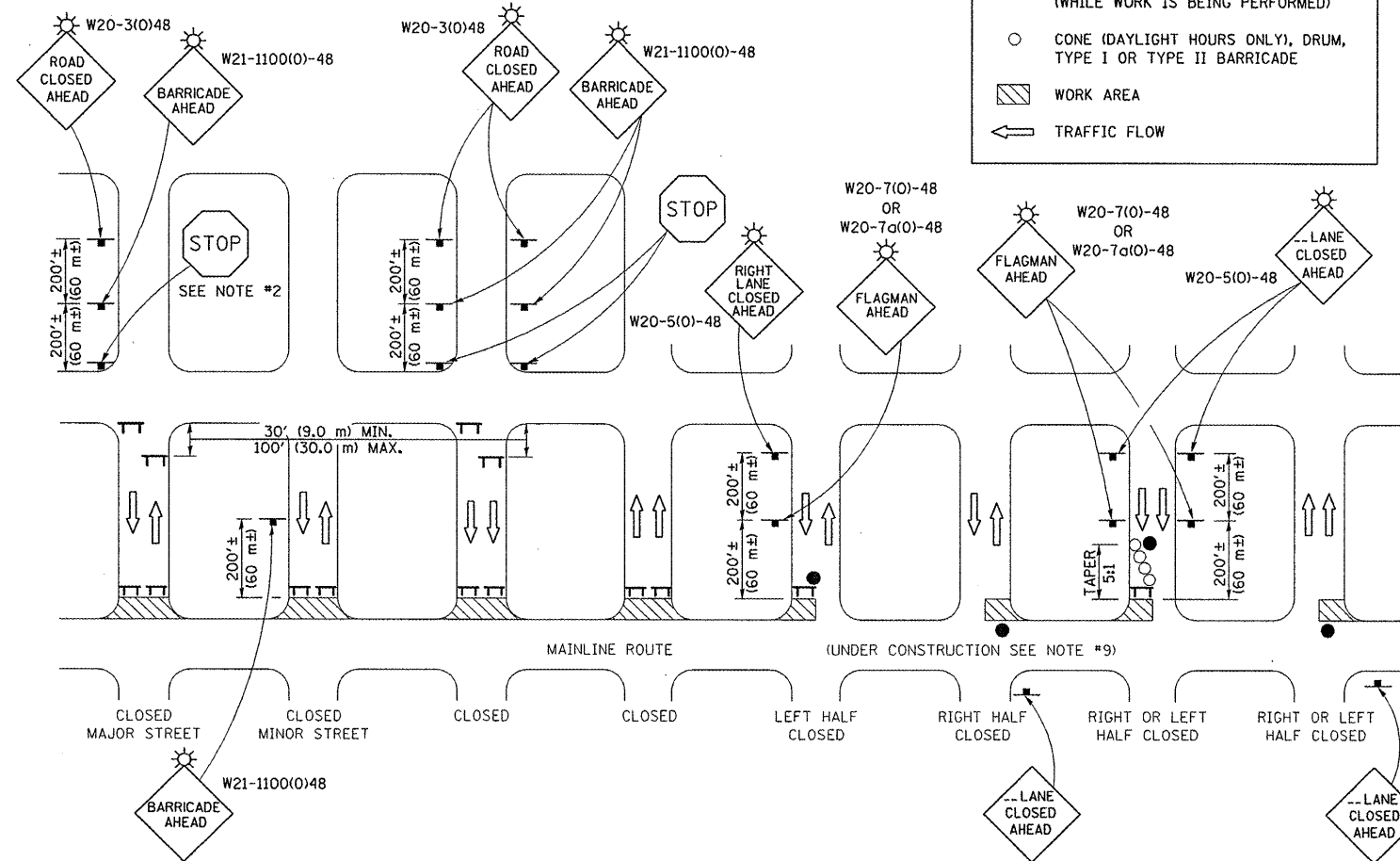
SYMBOLS	
	TYPE III BARRICADE (SEE NOTE 1)
	FLASHING AMBER LIGHT (TYPE A)



SYMBOLS	
	TYPE III BARRICADE (SEE NOTE)
	FLASHING LIGHT
	FLAGGER WITH TRAFFIC CONTROL SIGN (WHILE WORK IS BEING PERFORMED)
	CONE (DAYLIGHT HOURS ONLY), DRUM, TYPE I OR TYPE II BARRICADE
	WORK AREA
	TRAFFIC FLOW

GENERAL NOTES

- TYPE III BARRICADES SHALL BE AS SHOWN ON STANDARD 701901 "TYPICAL APPLICATIONS OF TYPE III BARRICADES CLOSING A ROAD". EACH TYPE III BARRICADE SHALL HAVE TWO FLASHING AMBER LIGHTS MOUNTED ABOVE IT.
- IF THE ROAD IS OPEN TO LOCAL TRAFFIC OR EXCEEDS 1000' (300 m), ANOTHER SET OF TYPE III BARRICADES, EQUIPPED AS IN NOTE 1 ABOVE, SHALL BE PLACED AT EACH END OF THE WORK AREA.
- WHEN A STOP CONDITION EXISTS, NO SIGNS ARE REQUIRED IN ADVANCE OF THE "STOP" SIGN WHEN THE ROAD IS CLOSED WITHIN 100' (30 m) OF THE INTERSECTION.
- STANDARD 701901 SHALL APPLY FOR THE PLACEMENT & DESIGN OF TYPE III BARRICADES.
- IF A TYPE III BARRICADE WITH AN ATTACHED SIGN PANEL WHICH MEETS NCHRP 350 IS NOT AVAILABLE, THE SIGNS MAY BE MOUNTED ON AN NCHRP 350 TEMPORARY SIGN SUPPORT DIRECTLY IN FRONT OF THE BARRICADE.
- REFLECTORIZED STRIPING SHALL APPEAR ON BOTH SIDES OF THE TYPE III BARRICADES IF ROAD IS OPEN TO LOCAL TRAFFIC.
- ALL SIGNS SHALL BE POST MOUNTED IF THE CLOSURE TIME EXCEEDS FOUR DAYS.
- A MINIMUM OF TWO FLASHING LIGHTS SHALL BE USED AT NIGHT ON EACH APPROACH IN ADVANCE OF THE WORK AREA. FLASHING LIGHTS SHALL BE INSTALLED ABOVE THE FIRST TWO SIGNS IN THE SERIES.
- LONGITUDINAL DIMENSIONS MAY BE ADJUSTED SLIGHTLY TO FIT FIELD CONDITIONS.
- FORMS BT. 725 AND BT. 726 ARE REQUIRED.
- WHEN A SIDEROAD INTERSECTS THE HIGHWAY ON WHICH WORK IS BEING PERFORMED, ADDITIONAL TRAFFIC DEVICES SHALL BE ERECTED AND PROVIDED AS DIRECTED BY THE ENGINEER.
- AN ADDITIONAL SIGN MAY BE REQUIRED AT A MAJOR INTERSECTING ROAD IN ADVANCE OF THE CLOSURE. THE ADDITIONAL SIGN SHALL GIVE THE DISTANCE TO THE BARRICADE IN MILES OR FRACTIONS OF A MILE.



GENERAL NOTES

- TYPE III BARRICADES SHALL BE AS SHOWN ON "TYPICAL APPLICATIONS OF TYPE III BARRICADES CLOSING A ROAD". EACH TYPE III BARRICADE SHALL HAVE TWO FLASHING AMBER LIGHTS MOUNTED ABOVE IT.
- WHERE A STOP CONDITION EXISTS, AS SHOWN ABOVE, WARNING SIGNS MAY BE OMITTED IN ADVANCE OF THE "STOP" SIGN.
- STANDARD 701901 SHALL APPLY FOR THE PLACEMENT & MANUFACTURE OF TYPE III BARRICADES.
- ALL SIGNS SHALL BE POST MOUNTED IF THE CLOSURE TIME EXCEEDS FOUR DAYS.
- ONE FLASHING WARNING SIGN DURING HOURS OF DARKNESS.
- LONGITUDINAL DIMENSIONS MAY BE ADJUSTED SLIGHTLY TO FIT FIELD CONDITIONS.
- FORMS BT 725 AND BT 726 ARE REQUIRED.
- THE MAINLINE ROUTE TEMPORARY TRAFFIC CONTROL SHALL BE IN ACCORDANCE WITH THE PLANS, SPECIAL PROVISIONS AND STANDARD SPECIFICATIONS.
- ALL FLAGGERS REQUIRED AT SIDE ROADS AND ENTRANCES REMAINING OPEN TO TRAFFIC AND/OR ADDITIONAL BARRICADES REQUIRED BY THE ENGINEER TO CLOSE SIDE ROADS AND ENTRANCES WILL BE PAID FOR ACCORDING TO ARTICLE 109.04.

Note: All dimensions are in INCHES (millimeters) unless otherwise shown.

*FY 2010 POSTING MITIGATION

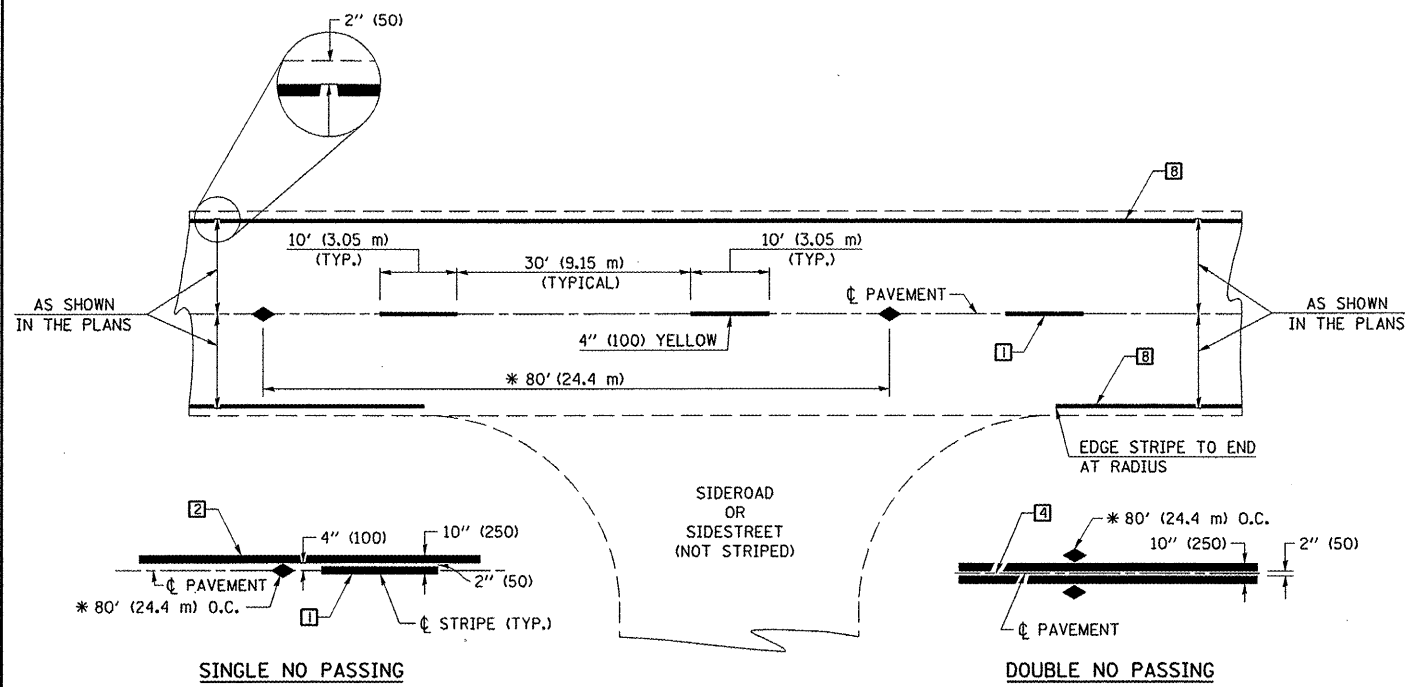
DISTRICT 5 DETAIL NO. 7020000

FILE NAME =	USER NAME = coombessf	DESIGNED -	REVISED - 11/06
c:\pwwork\pwwid\COOMBESSF\0180209.D	70814-sht-details.dgn	DRAWN -	REVISED - 12/07
	PLOT SCALE = 48.0000 "/td> <td>CHECKED -</td> <td>REVISED - 09/09 - KJT</td>	CHECKED -	REVISED - 09/09 - KJT
	PLOT DATE = 1/27/2010	DATE -	REVISED -

STATE OF ILLINOIS
DEPARTMENT OF TRANSPORTATION

TRAFFIC CONTROL & PROTECTION DEVICES (ROAD & SIDEROAD/STREET CLOSURES)				
SCALE:	SHEET NO.	OF SHEETS	STA.	TO STA.

F.A.S. RTE.	SECTION	COUNTY	TOTAL SHEETS	SHEET NO.
1671	*	DOUGLAS	16	12
FED. ROAD DIST. NO. ILLINOIS FED. AID PROJECT			CONTRACT NO. 70814	



* REDUCE TO 40' (12.2 m) O.C. ON CURVES WITH POSTED OR ADVISORY SPEEDS OF 45 mph (70 km/h) OR LESS.

TWO LANE/TWO WAY

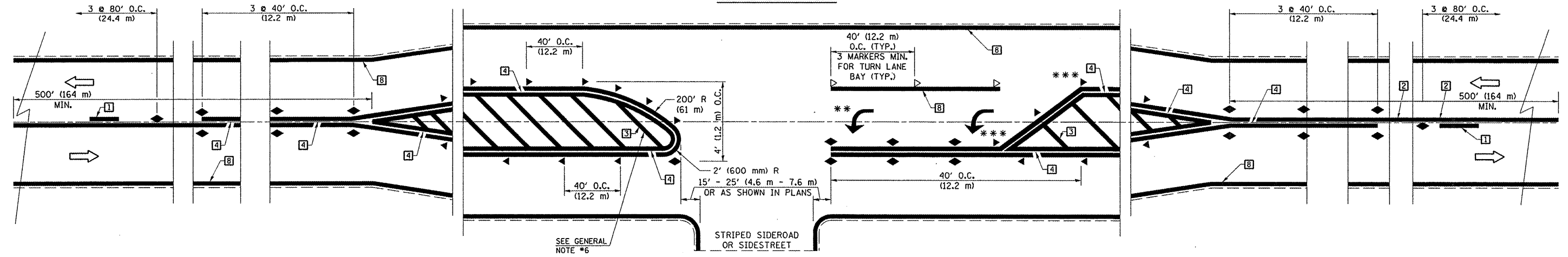
TYPICAL PAVEMENT MARKING LEGEND

- 1 4" (100) SKIP-DASH (YELLOW)
- 2 4" (100) SOLID (YELLOW)
- 3 12" (300) DIAGONAL (YELLOW)
- 4 4" (100) DOUBLE YELLOW (NARROW)
- 5 RESERVED
- 6 RESERVED
- 7 4" (100) SKIP-DASH (WHITE)
- 8 4" (100) SOLID (WHITE)
- 9 12" (300) DIAGONAL (WHITE)
- 10 6" (150) SOLID (WHITE)
- 11 24" (600) STOP BAR (WHITE)
- 12 8" (200) SOLID (WHITE)
- 13 4" (100) LANE LINE EXTENSIONS (WHITE)
- 14 4" (100) PARKING WHITE

TYPICAL PAVEMENT MARKERS LEGEND

- ◆ TWO-WAY AMBER MARKER
- ▶ ONE-WAY AMBER MARKER
- ▷ ONE-WAY CRYSTAL MARKER

RURAL LEFT TURN



*** REDUCE SPACING IF NECESSARY TO ASSURE MARKERS AT CORNER POINTS.

** TURN ARROWS SHALL BE PLACED AS SHOWN ON SHEET #2.

Note: All dimensions are in INCHES (millimeters) unless otherwise shown.
 *FY 2010 POSTING MITIGATION

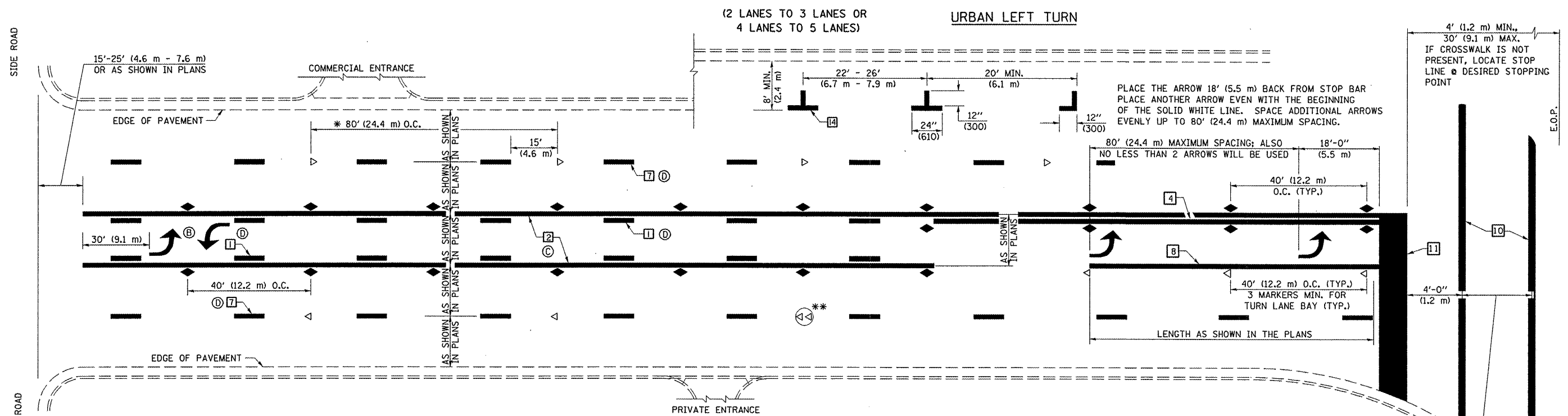
DISTRICT 5 DETAIL NO. 7800AAAA

FILE NAME =	USER NAME = coombessf	DESIGNED -	REVISED - 11/06
1671	78814-sh1-details.dgn	DRAWN -	REVISED - 09/2009 - KJT
	PLOT SCALE = 40.0000' / IN.	CHECKED -	REVISED -
	PLOT DATE = 1/27/2010	DATE -	REVISED -

**STATE OF ILLINOIS
DEPARTMENT OF TRANSPORTATION**

PAVEMENT MARKING AND MARKERS (RURAL & URBAN APPLICATIONS)			
SCALE:	SHEET NO. 1 OF 4 SHEETS	STA.	TO STA.

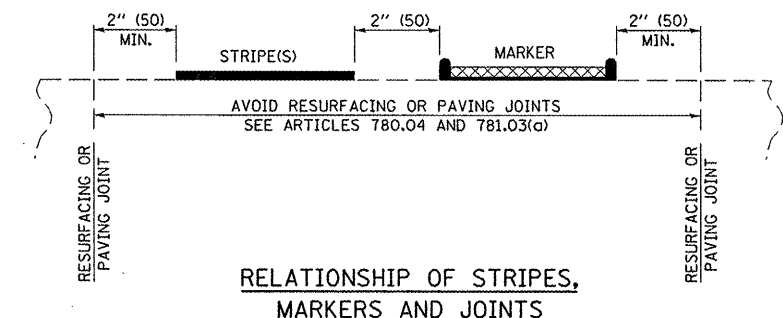
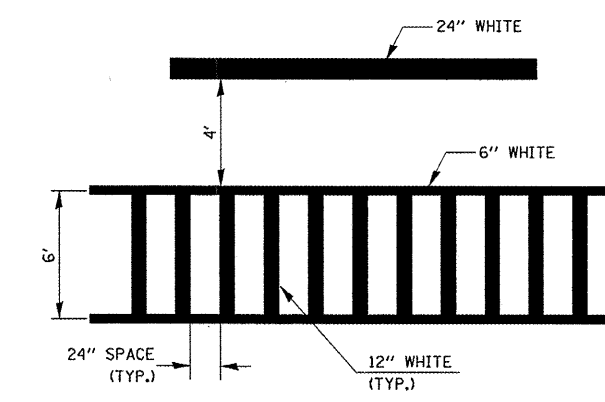
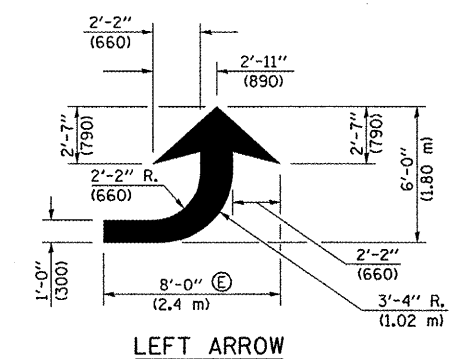
F.A.S. RTE.	SECTION	COUNTY	TOTAL SHEETS	SHEET NO.
1671		DOUGLAS	16	13
CONTRACT NO. 70814				
FED. ROAD DIST. NO. [ILLINOIS] FED. AID PROJECT				



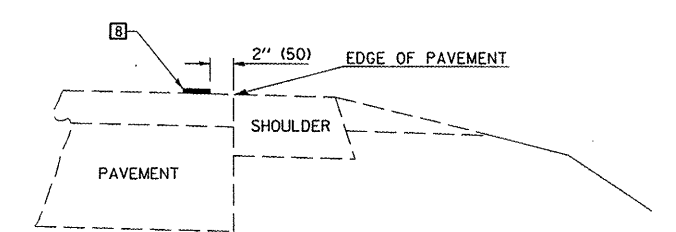
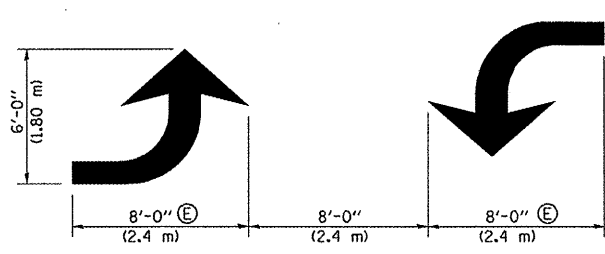
* REDUCE TO 40 FEET (12.2 METERS) ON CENTER ON CURVES WHERE ADVISORY SPEEDS ARE 10 MPH (15 km/h) LOWER THAN POSTED SPEEDS.

** DOUBLE LANE LINE MARKERS SHALL BE SPECIFIED AND SPACED AS SHOWN IN HIGHWAY STANDARD 781001 FOR MULTI-LANE DIVIDED AND UNDIVIDED HIGHWAYS.

BLOOMINGTON-NORMAL CITY LIMITS ONLY



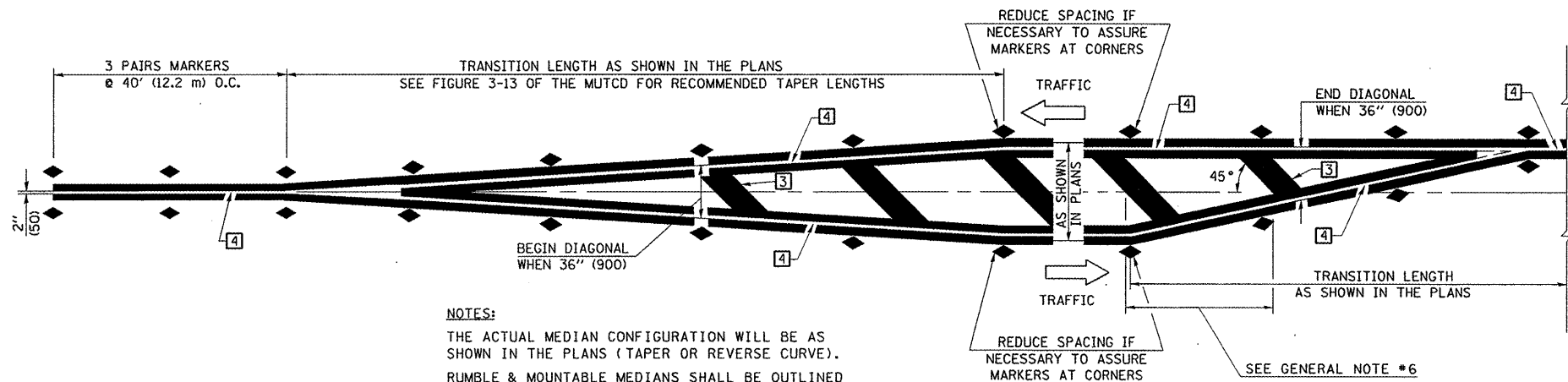
- GENERAL NOTES:**
- ⓑ TURN ARROW PAIRS SHALL BE PLACED AT 250' (75 m) INTERVALS AND SHALL BE EVENLY SPACED BETWEEN BOTH ENDS OF THE BIDIRECTIONAL LEFT TURN LANE.
 - ⓒ THE SOLID YELLOW PAVEMENT MARKINGS ② SHOULD GENERALLY START OR END NEAR THE RADIUS POINT OF EACH STREET RETURN EXCEPT WHERE ONE OR BOTH ENDS WOULD INCLUDE STOP BARS.
 - ⓓ THE SKIP-DASH PAVEMENT MARKINGS ① OR ⑦ SHOULD BE CENTERED BETWEEN BOTH ENDS OF EACH CITY BLOCK AND SHALL BE PLACED SO THEY LINE UP ACROSS FROM EACH OTHER. SEE EXAMPLE ON SHEET 2 OF 3.
 - ⓔ USE LARGE ARROW SIZE FOR BOTH RURAL AND URBAN LOCATIONS. (SEE LAST PAGE OF SECTION 780x FOR SYMBOLS TABLE)



Note: All dimensions are in INCHES (millimeters) unless otherwise shown.
 *FY 2010 POSTING MITIGATION

DISTRICT 5 DETAIL NO. 7800AAAA

FILE NAME =	USER NAME = coombessf	DESIGNED -	REVISED - 11/06	STATE OF ILLINOIS DEPARTMENT OF TRANSPORTATION	PAVEMENT MARKING AND MARKERS (RURAL & URBAN APPLICATIONS)	F.A.S. RTE.	SECTION	COUNTY	TOTAL SHEETS	SHEET NO.	
cd:\pw_work\pwidot\COOMBESSF\d0180209\078814-sht-details.dgn	78814-sht-details.dgn	DRAWN -	REVISED - 09/2009 - KJT			1671	*	DOUGLAS	16	14	
PLOT SCALE = 40.0000 / IN.		CHECKED -	REVISED -			CONTRACT NO. 70814					
PLOT DATE = 1/27/2010		DATE -	REVISED -			ILLINOIS FED. AID PROJECT					

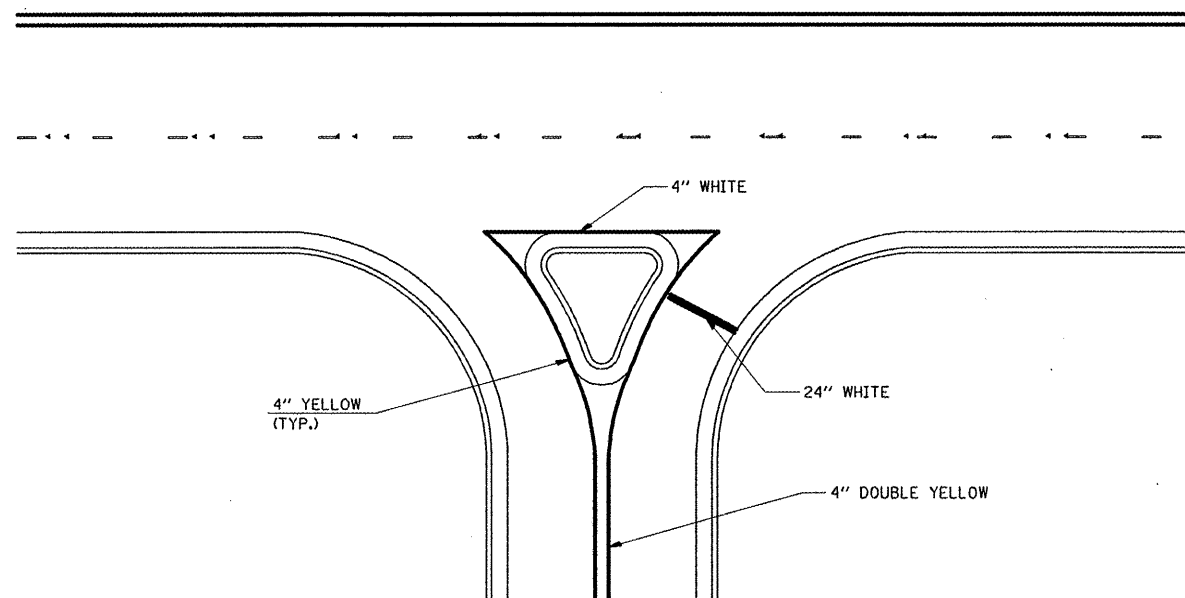


NOTES:
 THE ACTUAL MEDIAN CONFIGURATION WILL BE AS SHOWN IN THE PLANS (TAPER OR REVERSE CURVE).
 RUMBLE & MOUNTABLE MEDIANS SHALL BE OUTLINED WITH [2].

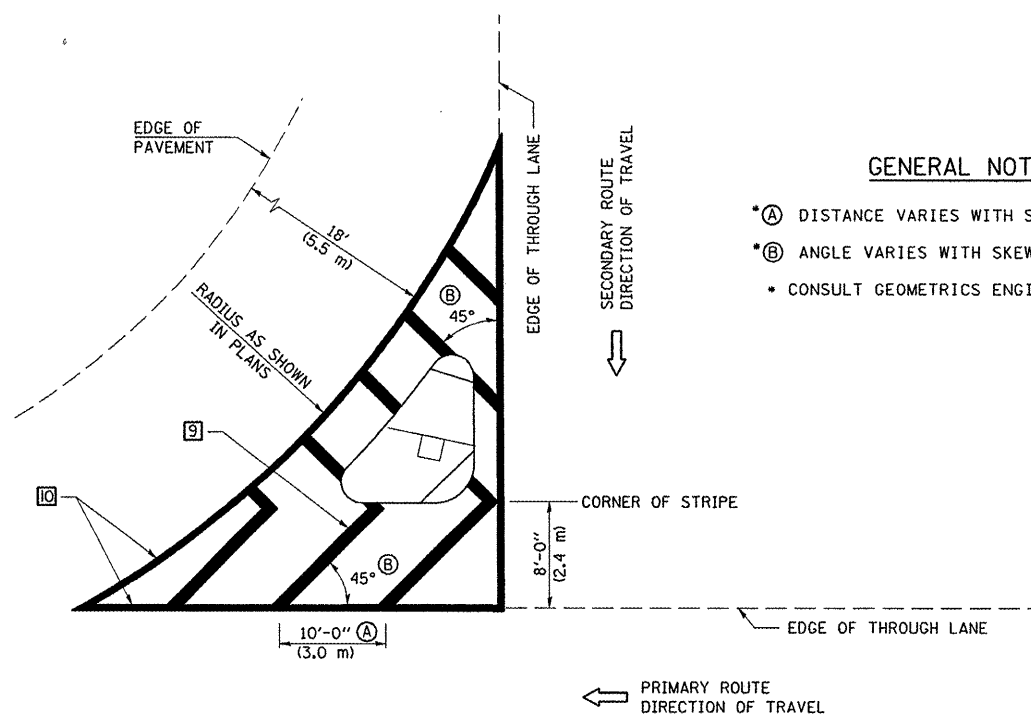
TYPICAL MEDIAN TRANSITIONS

GENERAL NOTES

1. WHEN MEDIANS ARE PRESENT, PAVEMENT MARKINGS ARE TO BE PLACED ADJACENT TO MEDIANS.
2. SOME OF THE INFORMATION INCLUDED WITH THIS DETAIL MAY NOT BE APPLICABLE TO THIS IMPROVEMENT.
3. PAVEMENT MARKINGS ARE TO BE EXTENDED THROUGH OMISSIONS WHEN APPLICABLE.
4. A STRIPING KEY IS AVAILABLE ELSEWHERE AND SHALL BE SHOWN WHERE THE QUANTITIES ARE LISTED.
5. FINAL PAVEMENT MARKINGS SHALL BE IN PLACE PRIOR TO PLACING ANY RAISED REFLECTIVE PAVEMENT MARKERS.
6. THE FOLLOWING CRITERIA SHALL BE USED FOR SELECTING THE DIAGONAL PAVEMENT MARKING SPACING,
 < 30 MPH USE 15' (< 50 km/h USE 4.5 m)
 30-45 MPH USE 20' (50-75 km/h USE 6.0 m)
 > 45 MPH USE 30' (> 75 km/h USE 9.0 m)



RIGHT IN - RIGHT OUT ACCESS



GENERAL NOTES

- *A DISTANCE VARIES WITH SKEW OF INTERSECTION.
- *B ANGLE VARIES WITH SKEW OF INTERSECTION.
- CONSULT GEOMETRICS ENGINEER

ISLAND

Note: All dimensions are in INCHES (millimeters) unless otherwise shown.

*FY 2010 POSTING MITIGATION

DISTRICT 5 DETAIL NO. 7800AAAA

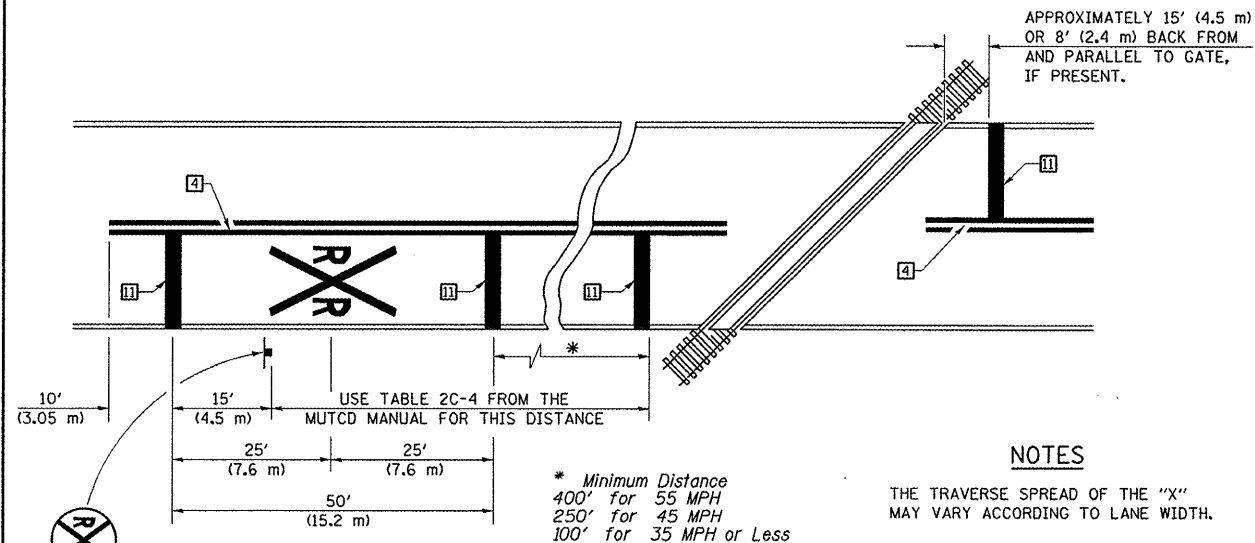
FILE NAME =	USER NAME = coombessf	DESIGNED -	REVISED - 11/06
c:\pw_work\PWIDOT\COOMBESSF\0180209\0570814-sh1-detail.dgn		DRAWN -	REVISED - 09/2009 - KJT
PLOT SCALE = 40.0000' / IN.		CHECKED -	REVISED -
PLOT DATE = 1/27/2010		DATE -	REVISED -

STATE OF ILLINOIS
 DEPARTMENT OF TRANSPORTATION

PAVEMENT MARKING AND MARKERS
 (RURAL & URBAN APPLICATIONS)

SCALE: SHEET NO. 3 OF 4 SHEETS STA. TO STA.

F.A.S. RTE.	SECTION	COUNTY	TOTAL SHEETS	SHEET NO.
1671	*	DOUGLAS	16	15
CONTRACT NO. 70814				
FED. ROAD DIST. NO.		ILLINOIS FED. AID PROJECT		



PAVEMENT MARKINGS AT RAILROAD-HIGHWAY GRADE CROSSING

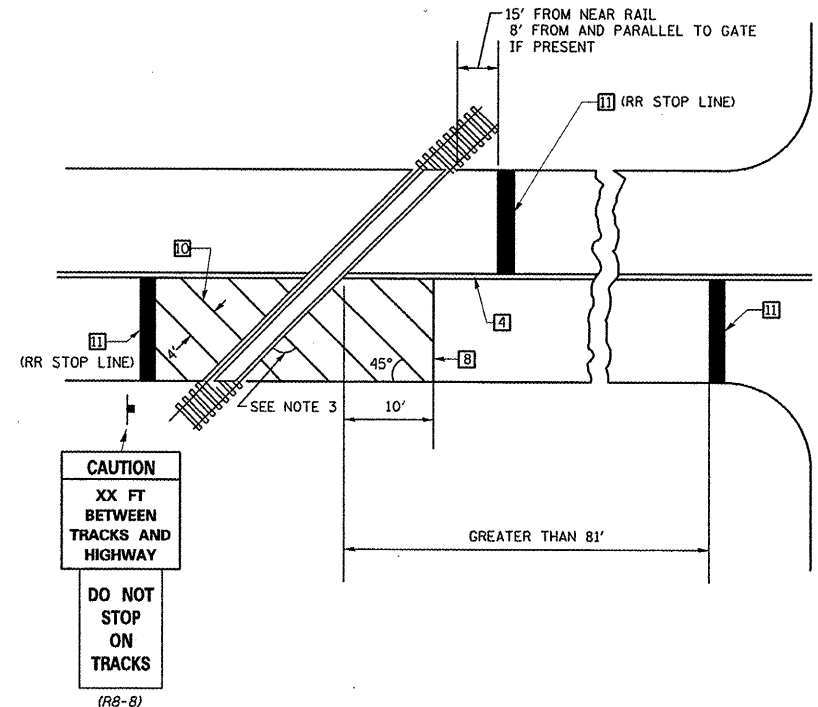
NOTES

THE TRAVERSE SPREAD OF THE "X" MAY VARY ACCORDING TO LANE WIDTH.

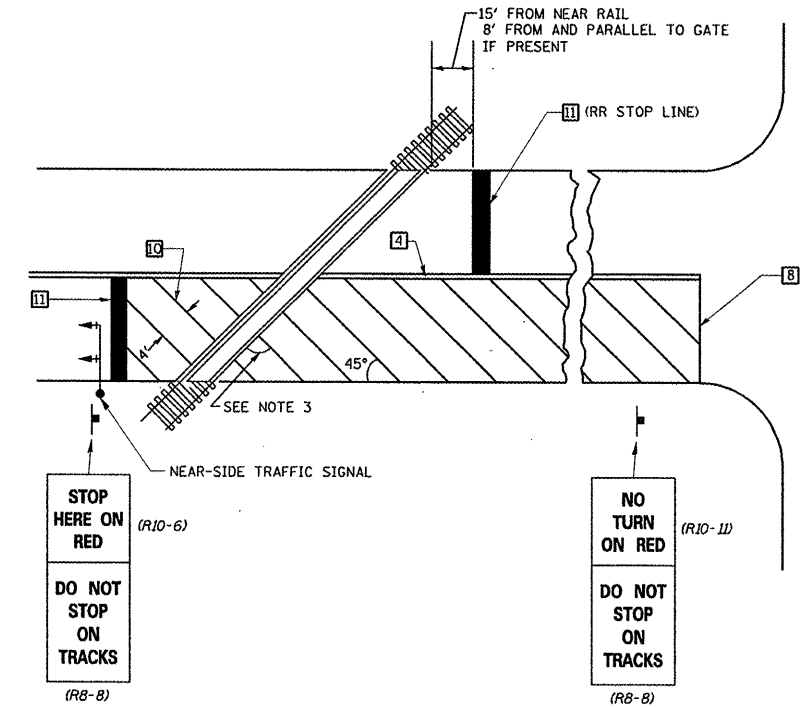
ON MULTI-LANE ROADS, THE STOP LINES SHALL EXTEND ACROSS ALL APPROACH LANES AND SEPARATE RXR SYMBOLS SHALL BE PLACED ADJACENT TO EACH OTHER IN EACH LANE.

WHEN THE PAVEMENT MARKING SYMBOL IS USED, A PORTION OF THE SYMBOL SHOULD BE LOCATED DIRECTLY ADJACENT TO THE ADVANCE WARNING SIGN (W10-1) AS PLACED BY TABLE II-1, CONDITION B OF THE MUTCD.

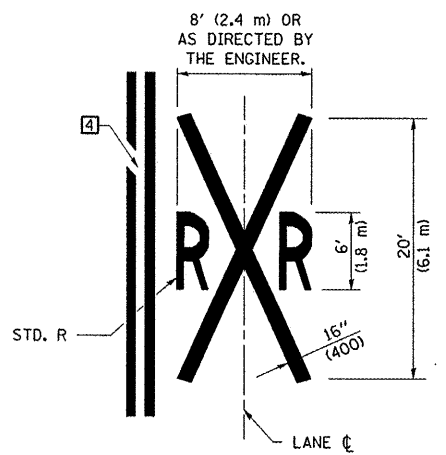
RAILROAD CROSSING WITH INTERCONNECT ONLY



RAILROAD CROSSING WITH INTERCONNECT AND PRE-SIGNALS



SUPPLEMENTAL PAVEMENT MARKING TREATMENT FOR RAILROAD-HIGHWAY GRADE CROSSING



GENERAL NOTES

- SUPPLEMENTAL PAVEMENT MARKINGS TO BE INSTALLED ONLY ON APPROACHES TO INTERSECTIONS CONTROLLED BY TRAFFIC SIGNALS WHICH ARE INTERCONNECTED WITH THE RAILROAD WARNING SIGNALS.
- EXTEND PAVEMENT MARKINGS TO THE INTERSECTION ONLY WHERE NEAR-SIDE TRAFFIC SIGNALS ARE USED.
- WHERE THE ANGLE BETWEEN THE DIAGONAL PAVEMENT MARKINGS AND THE TRACK WOULD BE LESS THAN 20°, THE PAVEMENT MARKINGS SHOULD BE PLACED IN THE OPPOSITE DIRECTION FROM THAT SHOWN.

Note: All dimensions are in INCHES (millimeters) unless otherwise shown.
 *FY 2010 POSTING MITIGATION

DISTRICT 5 DETAIL NO. 7800AAAA

FILE NAME =	USER NAME = coombessf	DESIGNED -	REVISED - 11/06
c:\pwork\pwork\DOT\COOMBESSF\d0180289\078014-sht-details.dgn		DRAWN -	REVISED - 09/2009 - KJT
	PLOT SCALE = 40.0000 "/ IN.	CHECKED -	REVISED -
	PLOT DATE = 1/27/2010	DATE -	REVISED -

STATE OF ILLINOIS
 DEPARTMENT OF TRANSPORTATION

PAVEMENT MARKING AND MARKERS
 (RURAL & URBAN APPLICATIONS)

F.A.S. RTE.	SECTION	COUNTY	TOTAL SHEETS	SHEET NO.
1671		DOUGLAS	16	16
CONTRACT NO. 70814				
FED. ROAD DIST. NO. ILLINOIS FED. AID PROJECT				

SCALE: SHEET NO. 4 OF 4 SHEETS STA. TO STA.