

STATE OF ILLINOIS  
DEPARTMENT OF TRANSPORTATION  
DIVISION OF HIGHWAYS

**PROPOSED  
HIGHWAY PLANS**

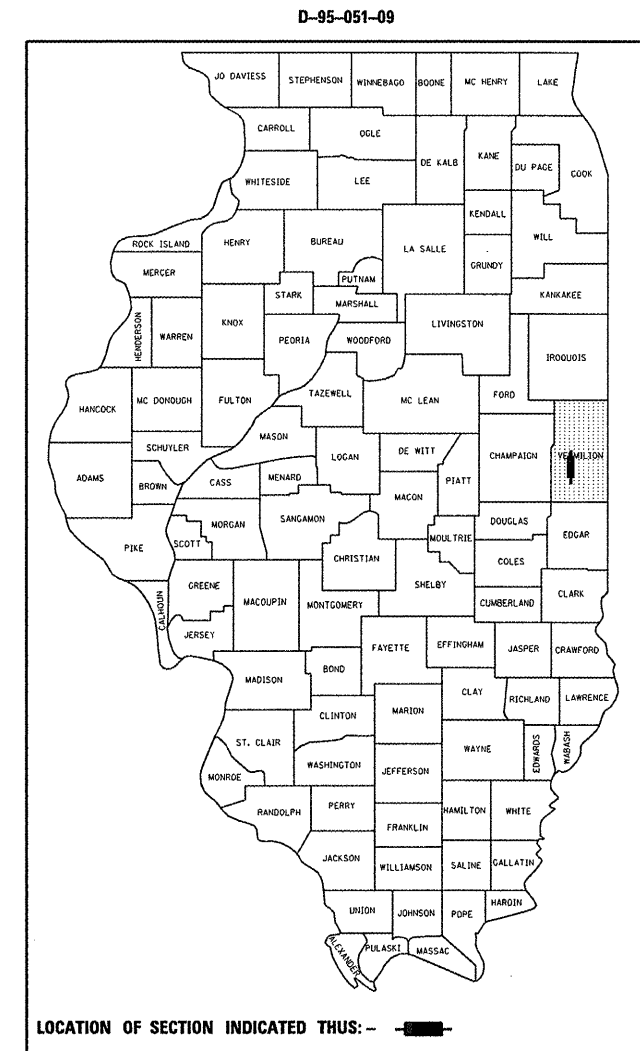
FAS ROUTE 331 (OAKWOOD RD)  
SECTION (81,15D)PT

PATCHING  
VERMILION COUNTY  
FROM SOUTH OF US 150 TO  
HOMER-CATLIN ROAD  
C-95-051-09

| F.A.S. RTE. | SECTION    | COUNTY    | TOTAL SHEETS       | SHEET NO. |
|-------------|------------|-----------|--------------------|-----------|
| 332         | (81,15D)PT | VERMILION | 11                 | 1         |
|             |            | ILLINOIS  | CONTRACT NO. 70818 |           |

FOR INDEX OF SHEETS, SEE SHEET NO. 2  
FOR SUMMARY OF QUANTITIES, SEE SHEET NO. 3

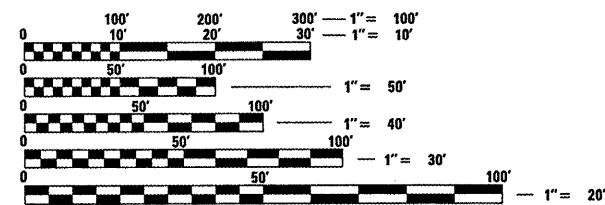
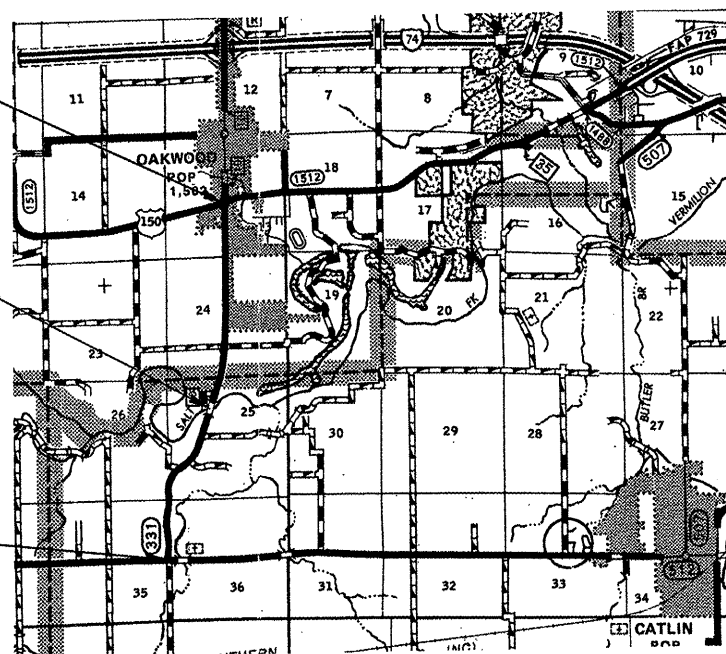
CURRENT ADT:  
4100 (2009)



SECTION (81,15D)PT  
BEGIN STATION 0+11.71

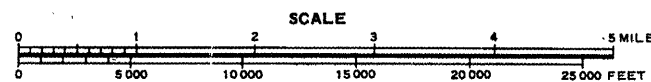
BRIDGE OMISSION  
STA. 90+06.21 TO STA. 94+03.79

SECTION (81,15D)PT  
END STATION 166+26.98



FULL SIZE PLANS HAVE BEEN PREPARED USING STANDARD ENGINEERING SCALES. REDUCED SIZED PLANS WILL NOT CONFORM TO STANDARD SCALES. IN MAKING MEASUREMENTS ON REDUCED PLANS, THE ABOVE SCALES MAY BE USED.

J.U.L.I.E.  
JOINT UTILITY LOCATION INFORMATION FOR EXCAVATION  
1-800-892-0123  
OR 811



GROSS LENGTH = 16615.27 FT. = 3.147 MILE  
NET LENGTH = 16217.69 FT. = 3.072 MILE

PROJECT ENGINEER: KEVIN TRAPP  
SQUAD LEADER: MATT BOWER  
DESIGNER: DAN CRADDOCK  
CONTRACT NO. 70818

STATE OF ILLINOIS  
DEPARTMENT OF TRANSPORTATION  
DIVISION OF HIGHWAYS

SUBMITTED 1/21 2010

*Joseph E. Goveas*  
DEPUTY DIRECTOR OF HIGHWAYS, REGION ENGINEER

*March 19, 2010*  
*Scott E. Stett, P.E.*  
Acting ENGINEER OF DESIGN AND ENVIRONMENT

*March 19, 2010*  
*Christine M. Reed*  
DIRECTOR OF HIGHWAYS, CHIEF ENGINEER

**PRINTED BY THE AUTHORITY  
OF THE STATE OF ILLINOIS**