

F.A.P. RTE.	SECTION	COUNTY	TOTAL SHEETS	SHEET NO.
310	69-12LS	MORGAN	16	1

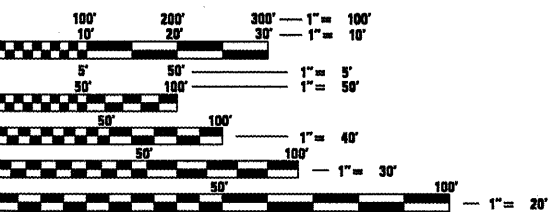
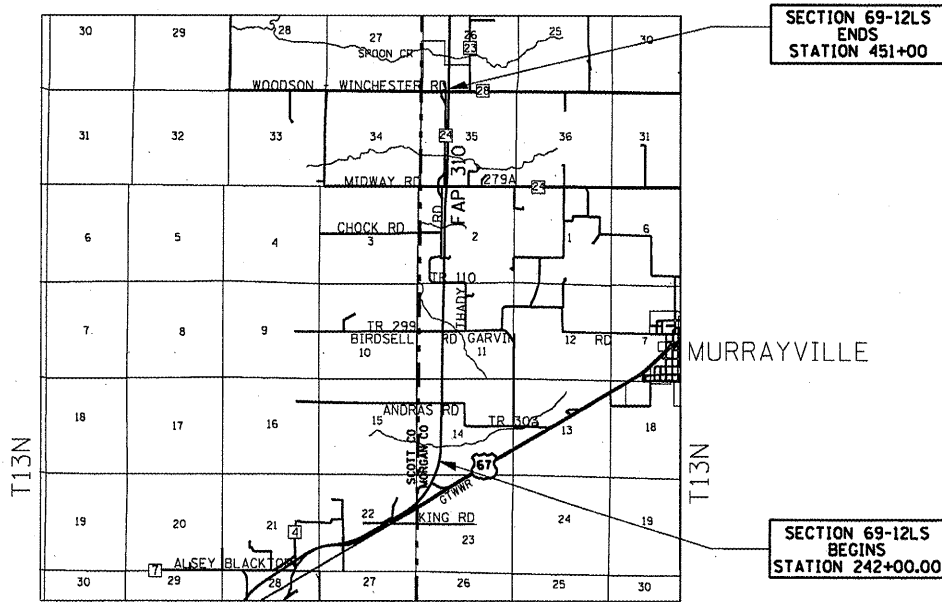
STATE OF ILLINOIS  
DEPARTMENT OF TRANSPORTATION  
DIVISION OF HIGHWAYS  
**PLANS FOR PROPOSED  
FEDERAL AID HIGHWAY**

F.A.P. ROUTE 310 (U.S. HWY. 67)  
SECTION 69-12LS  
PROJECT LANDSCAPING  
MORGAN COUNTY  
C-96-175-10

FOR INDEX OF SHEETS, SEE SHEET NO. 2

**STANDARD**

- 000001-05
- 701101-02
- 701106-02
- 701901-01



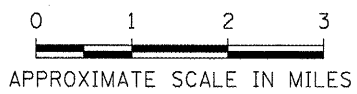
FULL SIZE PLANS HAVE BEEN PREPARED USING STANDARD ENGINEERING SCALES. REDUCED SIZED PLANS WILL NOT CONFORM TO STANDARD SCALES. IN MAKING MEASUREMENTS ON REDUCED PLANS, THE ABOVE SCALES MAY BE USED.

J.U.L.I.E.  
JOINT UTILITY LOCATION INFORMATION FOR EXCAVATION  
1-800-892-0123

**CONTRACT NO. 72533**

**DESIGN DESIGNATION**  
FAP 310  
ARTERIAL  
ADT = 10700 (2022)  
% SU = 3  
% MU = 6

**NET LENGTH OF SECTION 69-12LS = 20,900.00 FEET = 3.958 MILES**



STATE OF ILLINOIS  
DEPARTMENT OF TRANSPORTATION  
DIVISION OF HIGHWAYS

SUBMITTED *February 3, 2010*  
*Roger Z. Dmoch*  
DISTRICT ENGINEER

*March 19, 2010*  
*Scott E. Stett, P.E.*  
ENGINEER OF DESIGN AND ENVIRONMENT

*March 19, 2010*  
*Christine M. Reed*  
DIRECTOR, DIVISION OF HIGHWAYS

HUTCHISON ENGINEERING, INC  
JACKSONVILLE, ILLINOIS

PROJECT ENGINEER: JOHN C. NEGANGARD (217) 782-6990  
SENIOR SQUAD LEADER: VINCE MADONIA (217) 785-9046