

F.A.P. RTE.	SECTION	COUNTY	TOTAL SHEETS	SHEET NO.
310	69-12(LS-1)	MORGAN	20	1

STATE OF ILLINOIS  
DEPARTMENT OF TRANSPORTATION  
DIVISION OF HIGHWAYS

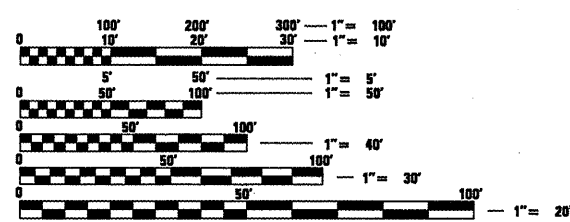
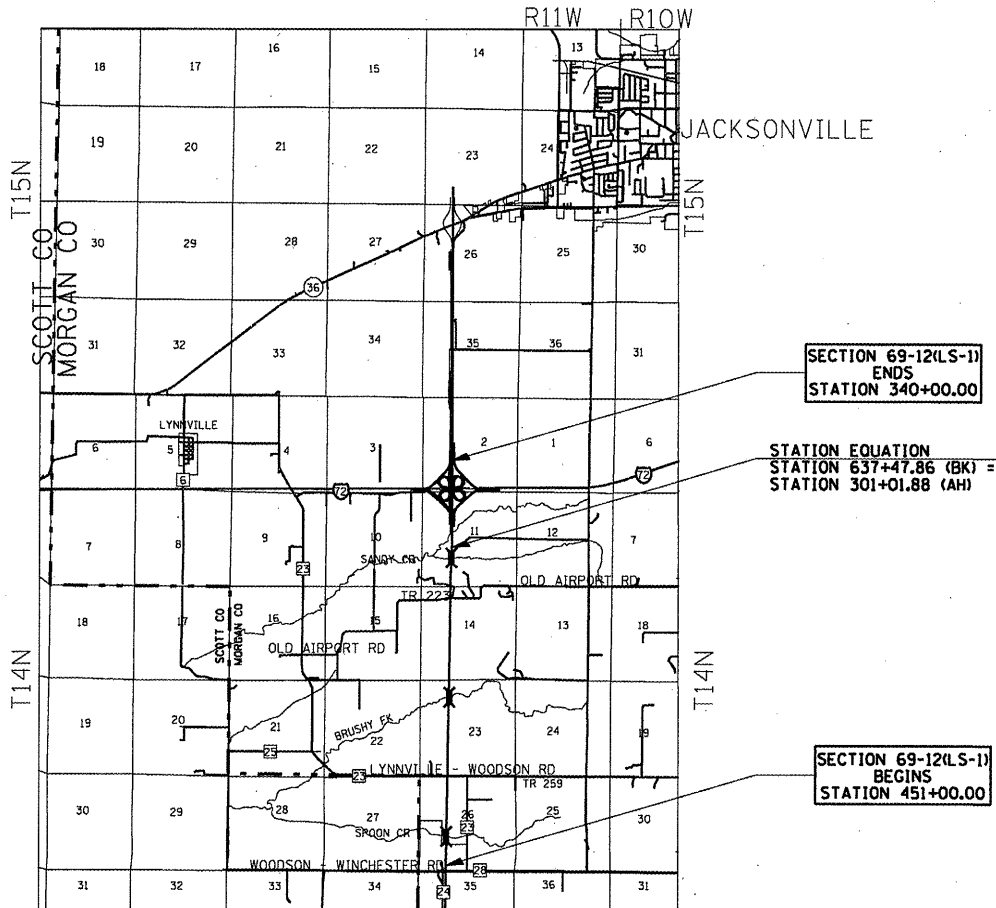
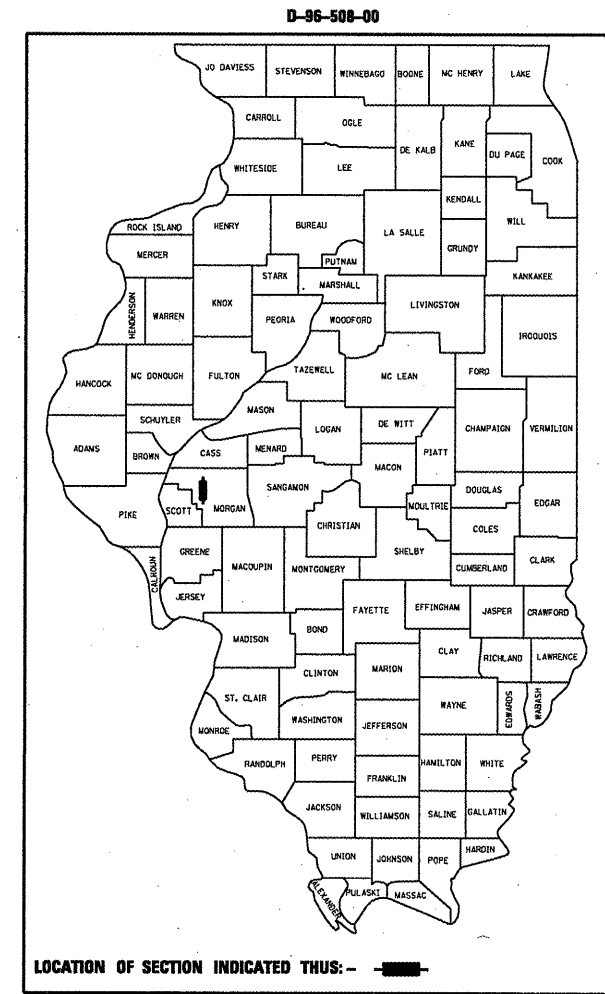
# PLANS FOR PROPOSED FEDERAL AID HIGHWAY

F.A.P. ROUTE 310 (U.S. HWY. 67)  
SECTION 69-12(LS-1)  
PROJECT LANDSCAPING  
MORGAN COUNTY  
C-96-177-10

FOR INDEX OF SHEETS, SEE SHEET NO. 2

**STANDARD**

- 000001-05
- 701101-02
- 701106-02
- 701901-01

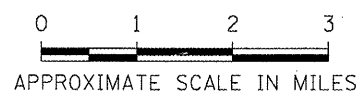


FULL SIZE PLANS HAVE BEEN PREPARED USING STANDARD ENGINEERING SCALES. REDUCED SIZED PLANS WILL NOT CONFORM TO STANDARD SCALES. IN MAKING MEASUREMENTS ON REDUCED PLANS, THE ABOVE SCALES MAY BE USED.

J.U.L.I.E.  
JOINT UTILITY LOCATION INFORMATION FOR EXCAVATION  
1-800-892-0123

**DESIGN DESIGNATION**  
FAP 310  
ARTERIAL  
ADT = 10700 (2022)  
% SU = 3  
% MU = 6

NET LENGTH OF PROJECT = 22,546.00 FEET = 4.270 MILES



STATE OF ILLINOIS  
DEPARTMENT OF TRANSPORTATION  
DIVISION OF HIGHWAYS

SUBMITTED *February 3, 2010*  
*Ryan Z. Dimpall*  
DISTRICT ENGINEER

*March 19, 2010*  
*Scott E. Stiles P.E.*  
ENGINEER OF DESIGN AND ENVIRONMENT

*March 19, 2010*  
*Christine M. Reed*  
DIRECTOR, DIVISION OF HIGHWAYS

HUTCHISON ENGINEERING, INC  
JACKSONVILLE, ILLINOIS

PROJECT ENGINEER: JOHN C. NEGANGARD (217) 782-6990  
SENIOR SQUAD LEADER: VINCE MADONIA (217) 785-9046

F.A.P. RTE.	SECTION	COUNTY	TOTAL SHEETS	SHEET NO.
310	69-12(LS-1)	MORGAN	20	2
STA.		TO STA.		
FED. ROAD DIST. NO.		ILLINOIS FED. AID PROJECT		

100%  
STATE  
Y003

SUMMARY OF QUANTITIES

INDEX

- 1 COVER SHEET, STANDARD
- 2 INDEX, SUMMARY OF QUANTITIES, GENERAL NOTES
- 3-20 LANDSCAPING PLANS

GENERAL NOTES

1. THE TREES SHALL BE SPACED A MINIMUM OF 20 FEET APART.
2. THE LOCATIONS OF ALL PLANTS SHOWN ON THE PLANS ARE APPROXIMATE. THE DISTRICT LANDSCAPE ARCHITECT AND THE DEPARTMENT SHALL HAVE THE RIGHT TO ADJUST THE LOCATION OF PLANTS. NO ADDITIONAL COMPENSATION WILL BE ALLOWED THE CONTRACTOR FOR CONFORMING WITH THIS PROVISION.
3. CLASS 4 SEEDING AREAS SHALL EXTEND FROM A LINE 20 FEET FROM THE EDGES OF THE OUTSIDE SHOULDERS TO THE ACCESS CONTROL OR THE RIGHT-OF-WAY LINES AT THE LOCATIONS SHOWN ON THE PLANS.
4. THE SEEDING SHALL NOT BEGIN UNTIL ALL OTHER WORK HAS BEEN COMPLETED ON THIS SECTION UNLESS OTHERWISE DIRECTED BY THE LANDSCAPE ARCHITECT OR THE ENGINEER. NO FERTILIZER NUTRIENTS OR MULCH WILL BE REQUIRED FOR THE INTER SEEDING.
5. THE CONSTRUCTION LIMITS SHOWN ON THE PLANS ARE FOR THE GRADING AND PAVING OF THE VARIOUS CONSTRUCTION SECTIONS AND SHALL NOT BE CONSTRUED TO BE THE LIMITS FOR THE LANDSCAPING ON THIS PROJECT.

COMMITMENTS

PAY CODE ITEM	ITEM	UNIT	TOTAL	QUANTITY PER SHEET																	
				3	4	5	6	7	8	9	10	11	12	13	14	15	16	17	18	19	20
25000750	MOWING	ACRE	107.1	6.7	3.9	0.0	0.6	6.2	4.9	6.8	1.1	0.0	0.0	5.7	8.0	7.0	0.7	15.1	19.4	10.0	11.0
25001800	SEEDING, CLASS 4 (MODIFIED)	ACRE	107.1	6.7	3.9	0.0	0.6	6.2	4.9	6.8	1.1	0.0	0.0	5.7	8.0	7.0	0.7	15.1	19.4	10.0	11.0
67100100	MOBILIZATION	L SUM	1																		
A2001020	TREE, ACER RUBRUM (RED MAPLE), 2-1/2" CALIPER, BALLED AND BURLAPPED	EACH	61	2	2	2	3	2			5			6	8	8	3	3	3	5	9
A2001720	TREE, ACER SACCHARUM (SUGAR MAPLE), 2-1/2" CALIPER, BALLED AND BURLAPPED	EACH	56		2	2				3	5	3		3	6	3	5	6	7	2	9
A2002320	TREE, BETULA NIGRA (RIVER BIRCH), 2-1/2" CALIPER, BALLED AND BURLAPPED	EACH	27			2	2			10				2			5		3		3
A2002916	TREE, CELTIS OCCIDENTALIS (COMMON HACKBERRY), 2" CALIPER, BALLED AND BURLAPPED	EACH	37	3	3			2		2		2	2	2	2	4	5	4	3		3
A2007116	TREE, QUERCUS RUBRA (RED OAK), 2" CALIPER, BALLED AND BURLAPPED	EACH	35	3	3	3		2		6	2			3	2	2	3		2	2	2
A2007720	TREE, TAXODIUM DISTICHUM SHAWNEE BRAVE (SHAWNEE BRAVE BALD CYPRESS), 2-1/2" CALIPER, BALLED AND BURLAPPED	EACH	18			2				10							2		4		
B2001166	TREE, CERCIS CANADENSIS (EASTERN REDBUD), 6' HEIGHT, CLUMP FORM, BALLED AND BURLAPPED	EACH	63		3			6	6	8				7	7	3	5	5		9	4
B2001666	TREE, CRATAEGUS CRUSGALLI INERMIS (THORN LESS COCKSPUR HAWTHORN), 6' HEIGHT, SHRUB FORM, BALLED AND BURLAPPED	EACH	17		3				3			2	3				3	3			
B2001966	TREE, CRATAEGUS PHAENOPYRUM (WASHINGTON HAWTHORN), 6' HEIGHT, CLUMP FORM, BALLED AND BURLAPPED	EACH	19		2				3			2	2			3	2		2	3	
B2003066	TREE, MALUS BRANDYWINE (BRANDYWINE CRAB APPLE), 6' HEIGHT, CLUMP FORM, BALLED AND BURLAPPED	EACH	23	3					3	2			4				5				3
B2004316	TREE, MALUS RADIANT (RADIANT CRAB APPLE), 2" CALIPER, TREE FORM, BALLED AND BURLAPPED	EACH	50	2	5		2	2				2			8	5	3	9	5	3	4
B2005066	TREE, MALUS SNOWDRIFT (SNOWDRIFT CRAB APPLE), 6' HEIGHT, CLUMP FORM, BALLED AND BURLAPPED	EACH	33	2				5				3	2		5	2	4	2	3	2	3
D2002972	EVERGREEN, PINUS STROBUS (EASTERN WHITE PINE), 6' HEIGHT, BALLED AND BURLAPPED	EACH	161	36	10	10	20		10	14	5			13	32	11					
K0026700	TREE CARE	EACH	2																		
K0026710	TREE CARE MULCH	L SUM	1																		
K0026720	TREE INTERMEDIATE AND SHRUB WATERING	UNIT	6																		

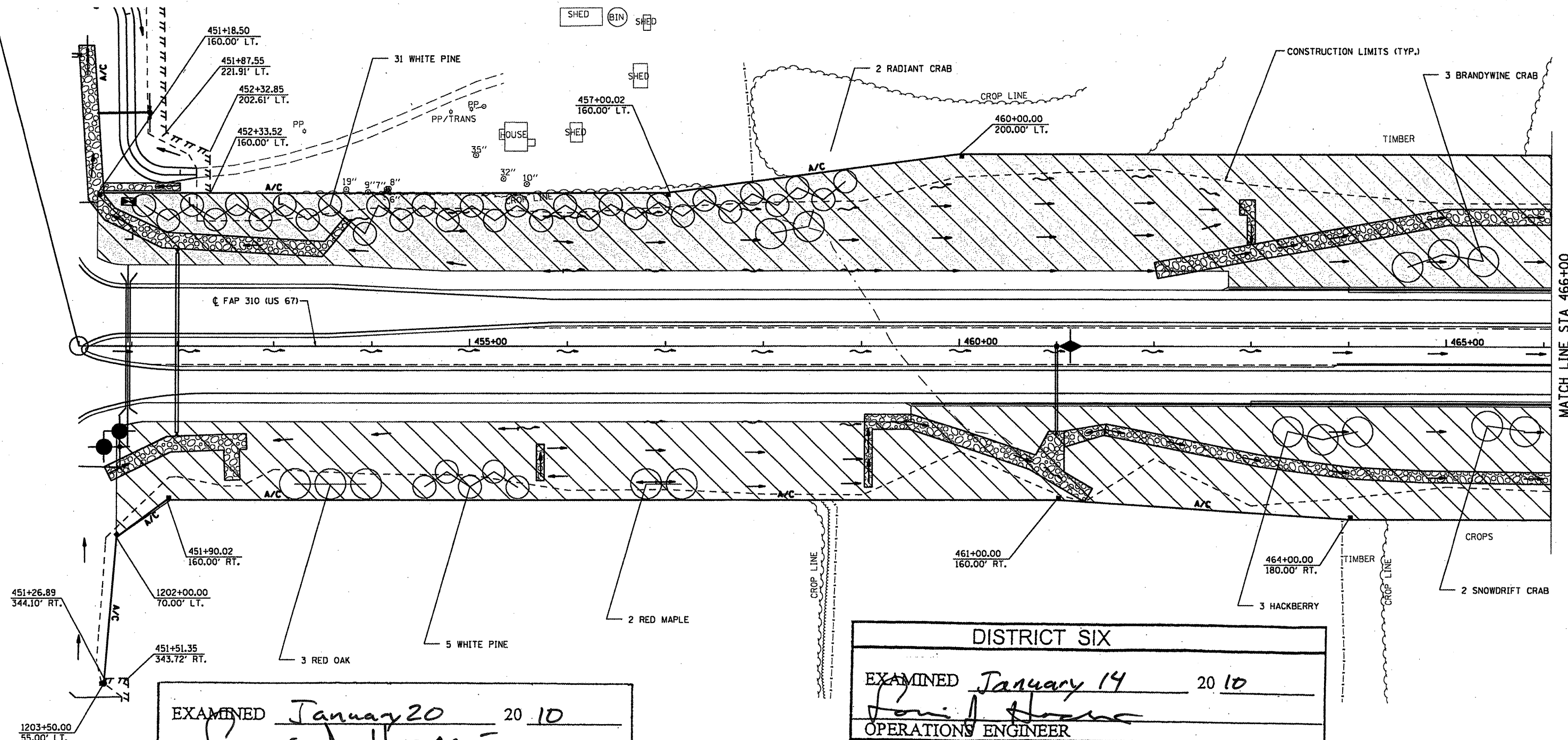
REVISIONS	
NAME	DATE

ILLINOIS DEPARTMENT OF TRANSPORTATION  
**INDEX, SUMMARY OF QUANTITIES,  
 AND GENERAL NOTES**  
 FAP ROUTE 310  
 SCALE: VERT. \_\_\_\_\_  
 DATE \_\_\_\_\_  
 DRAWN BY \_\_\_\_\_  
 CHECKED BY \_\_\_\_\_

F.A.P. RTE.	SECTION	COUNTY	TOTAL SHEETS	SHEET NO.
310	69-12(LS-1)	MORGAN	20	3
STA. 451+00		TO STA. 466+00		
FED. ROAD DIST. NO.		ILLINOIS	FED. AID PROJECT	

BEGIN SECTION 69-12(LS-1)  
STA. 451+00.00

PROF. SEEDING CLASS 4 (MODIFIED)



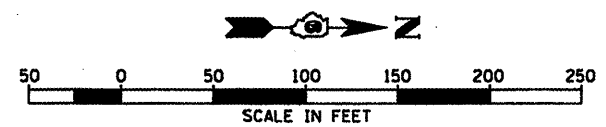
MATCH LINE STA 466+00

EXAMINED January 20 20 10  
*Louis J. Hosi*  
PROGRAM IMPLEMENTATION ENGINEER

EXAMINED January 14 20 10  
*DRM*  
PROGRAM DEVELOPMENT ENGINEER

DISTRICT SIX

EXAMINED January 14 20 10  
*Louis J. Hosi*  
OPERATIONS ENGINEER



REVISIONS	
NAME	DATE

ILLINOIS DEPARTMENT OF TRANSPORTATION

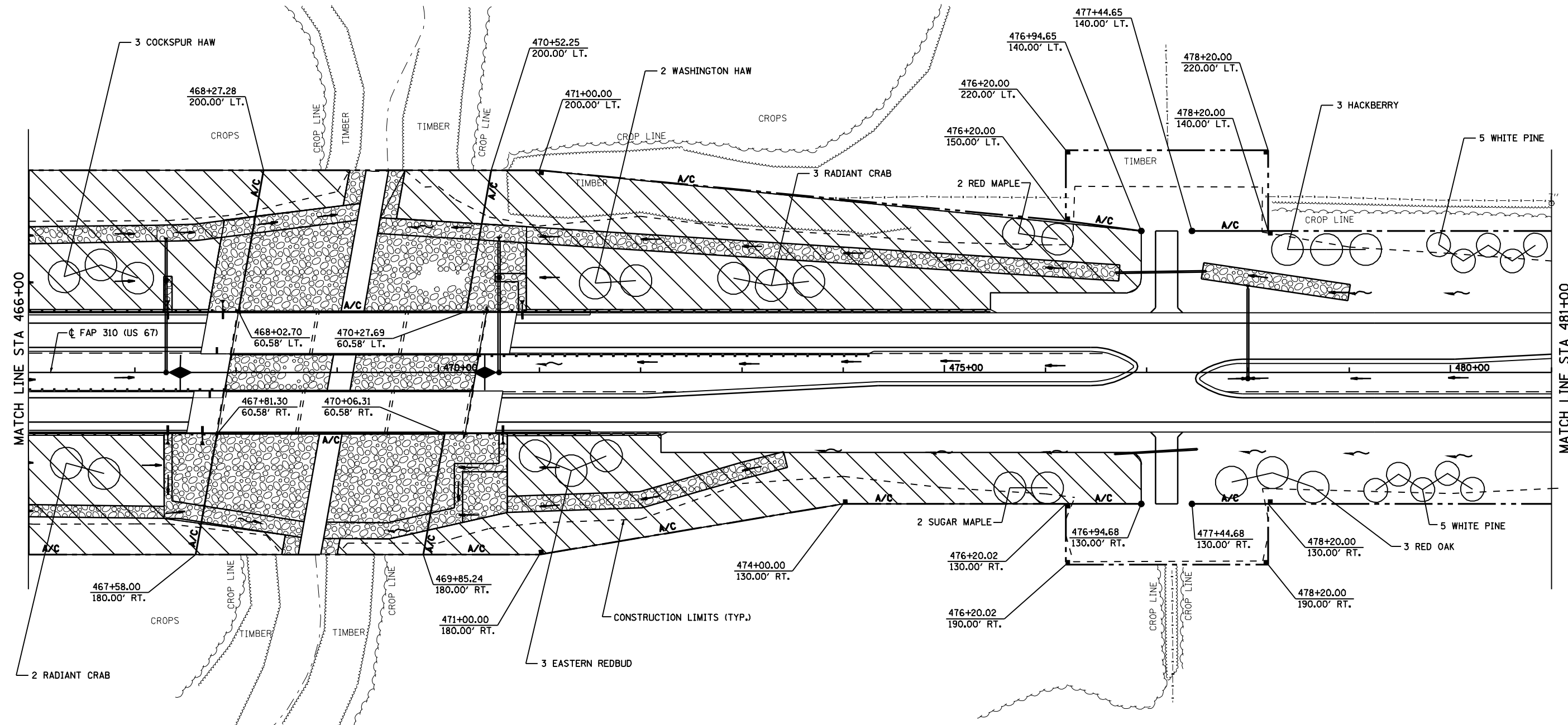
FAP ROUTE 310  
LANDSCAPING PLAN  
STA 451+00 TO STA 466+00

SCALE: VERT. \_\_\_\_\_  
HORIZ. \_\_\_\_\_

DATE \_\_\_\_\_ DRAWN BY \_\_\_\_\_  
CHECKED BY \_\_\_\_\_

F.A.P. RTE.	SECTION	COUNTY	TOTAL SHEETS	SHEET NO.
310	69-12(LS-1)	MORGAN	20	4
STA. 466+00		TO STA. 481+00		
FED. ROAD DIST. NO.		ILLINOIS FED. AID PROJECT		

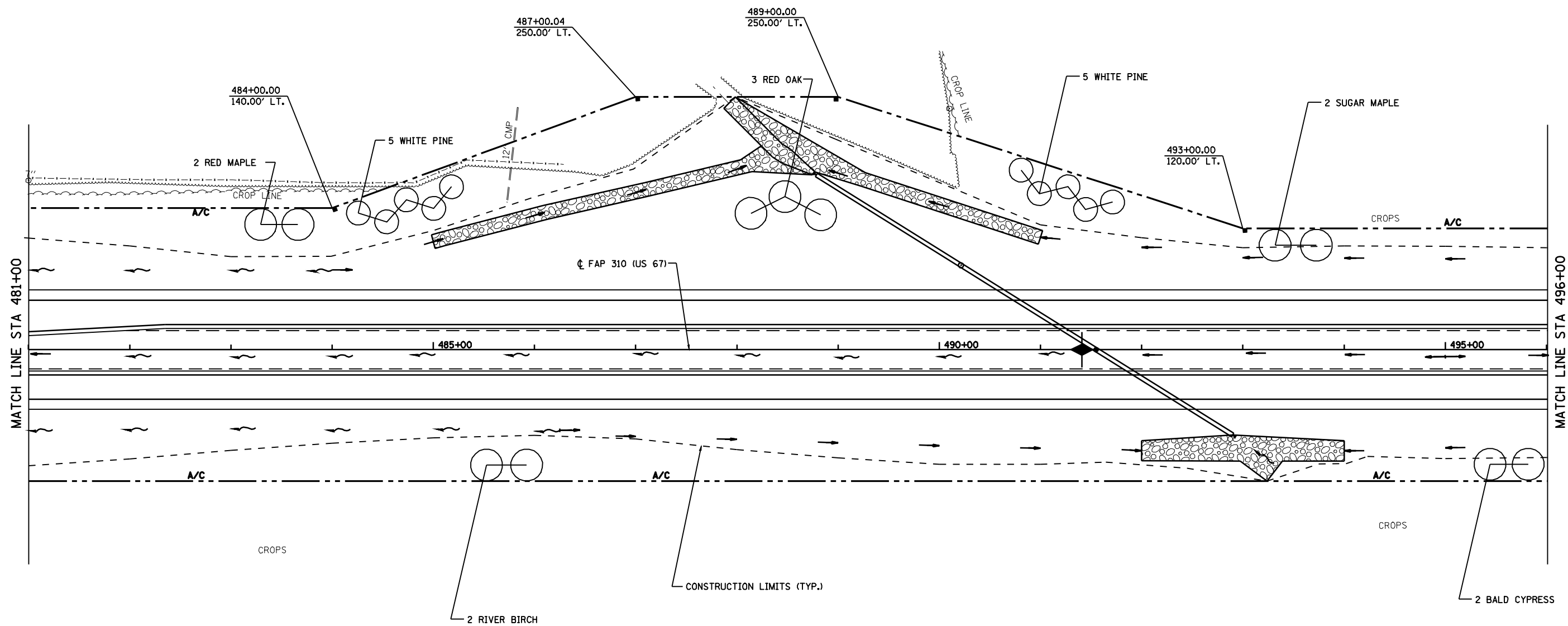
 PROP. SEEDING CLASS 4 (MODIFIED)



REVISIONS	
NAME	DATE

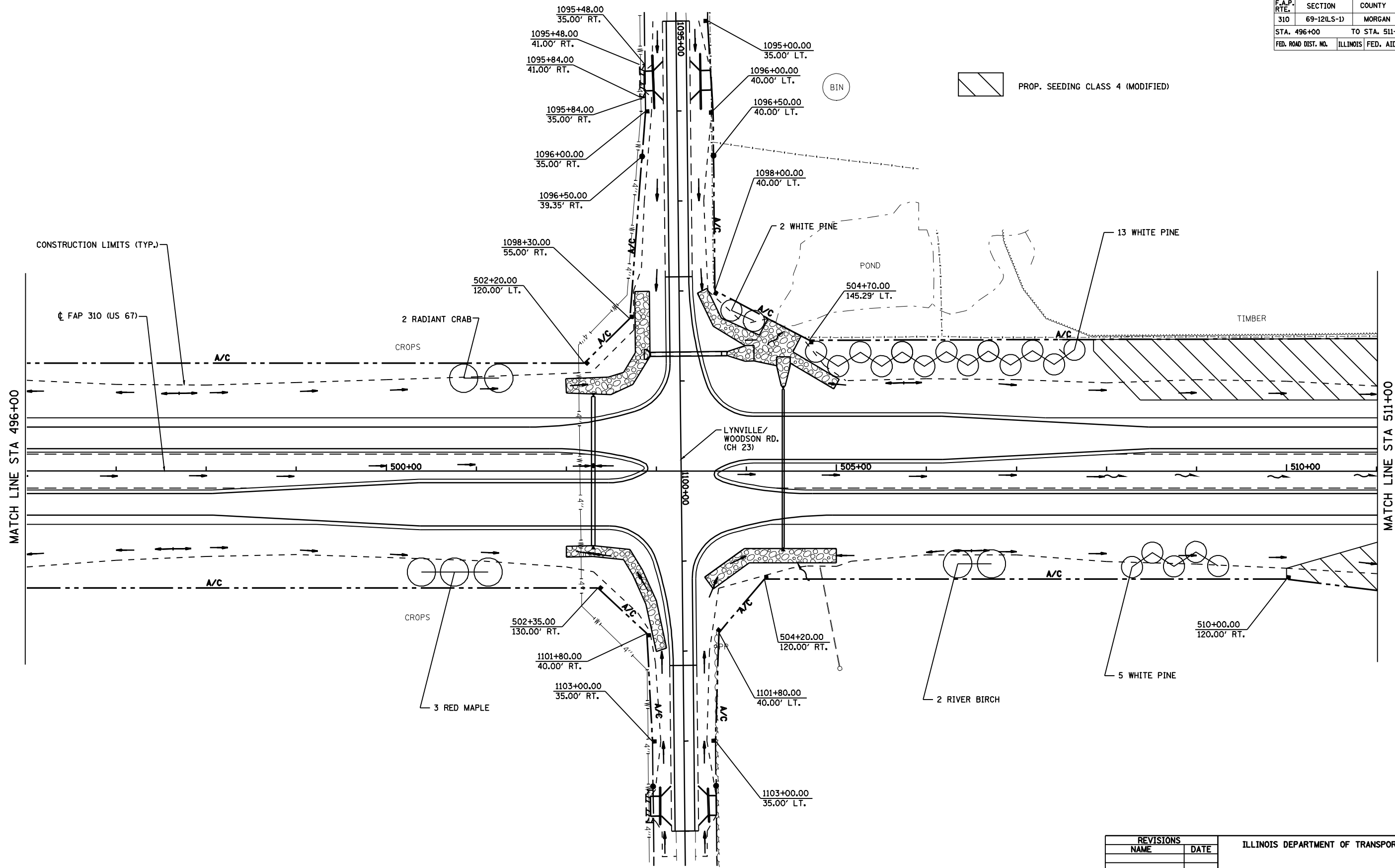
ILLINOIS DEPARTMENT OF TRANSPORTATION  
 FAP ROUTE 310  
 LANDSCAPING PLAN  
 STA 466+00 TO STA 481+00  
 SCALE: VERT. \_\_\_\_\_  
 DATE \_\_\_\_\_ HORIZ. \_\_\_\_\_  
 DRAWN BY \_\_\_\_\_  
 CHECKED BY \_\_\_\_\_

F.A.P. RTE.	SECTION	COUNTY	TOTAL SHEETS	SHEET NO.
310	69-12(LS-1)	MORGAN	20	5
STA. 481+00		TO STA. 496+00		
FED. ROAD DIST. NO.		ILLINOIS FED. AID PROJECT		



REVISIONS		ILLINOIS DEPARTMENT OF TRANSPORTATION
NAME	DATE	
		FAP ROUTE 310 LANDSCAPING PLAN STA 481+00 TO STA 496+00
SCALE:	VERT. / HORIZ.	DRAWN BY / CHECKED BY

F.A.P. RTE.	SECTION	COUNTY	TOTAL SHEETS	SHEET NO.
310	69-12(LS-1)	MORGAN	20	6
STA. 496+00		TO STA. 511+00		
FED. ROAD DIST. NO.		ILLINOIS FED. AID PROJECT		



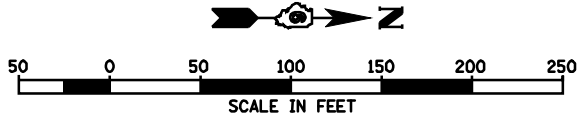
REVISIONS	
NAME	DATE

ILLINOIS DEPARTMENT OF TRANSPORTATION

FAP ROUTE 310  
LANDSCAPING PLAN  
STA 496+00 TO STA 511+00

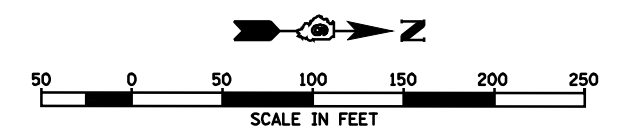
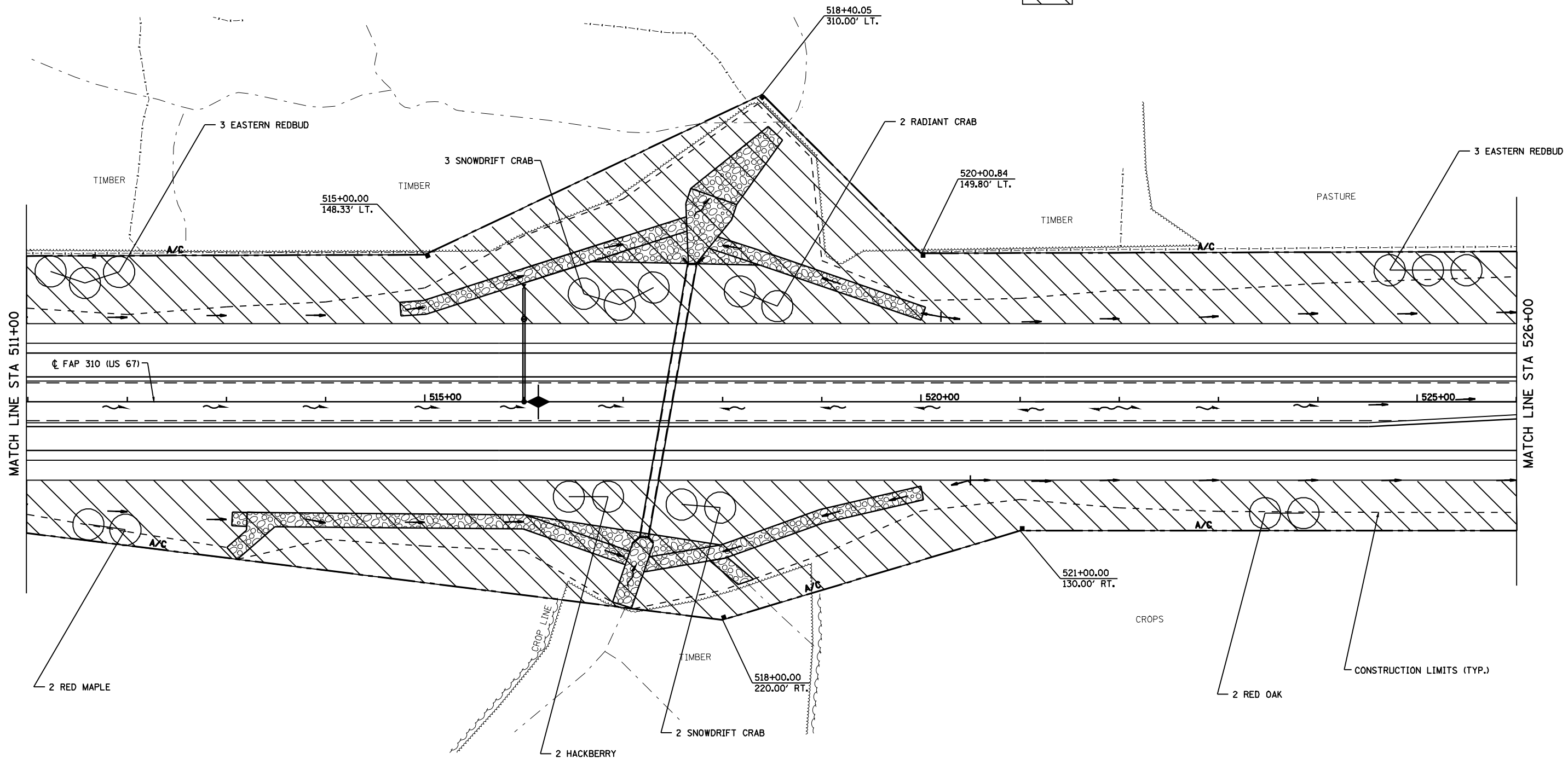
SCALE: VERT. \_\_\_\_\_  
HORIZ. \_\_\_\_\_

DATE \_\_\_\_\_ DRAWN BY \_\_\_\_\_  
CHECKED BY \_\_\_\_\_



F.A.P. RTE.	SECTION	COUNTY	TOTAL SHEETS	SHEET NO.
310	69-12(ILS-1)	MORGAN	20	7
STA. 511+00		TO STA. 526+00		
FED. ROAD DIST. NO.		ILLINOIS	FED. AID PROJECT	

 PROP. SEEDING CLASS 4 (MODIFIED)

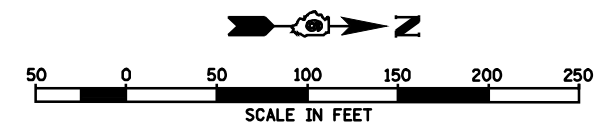
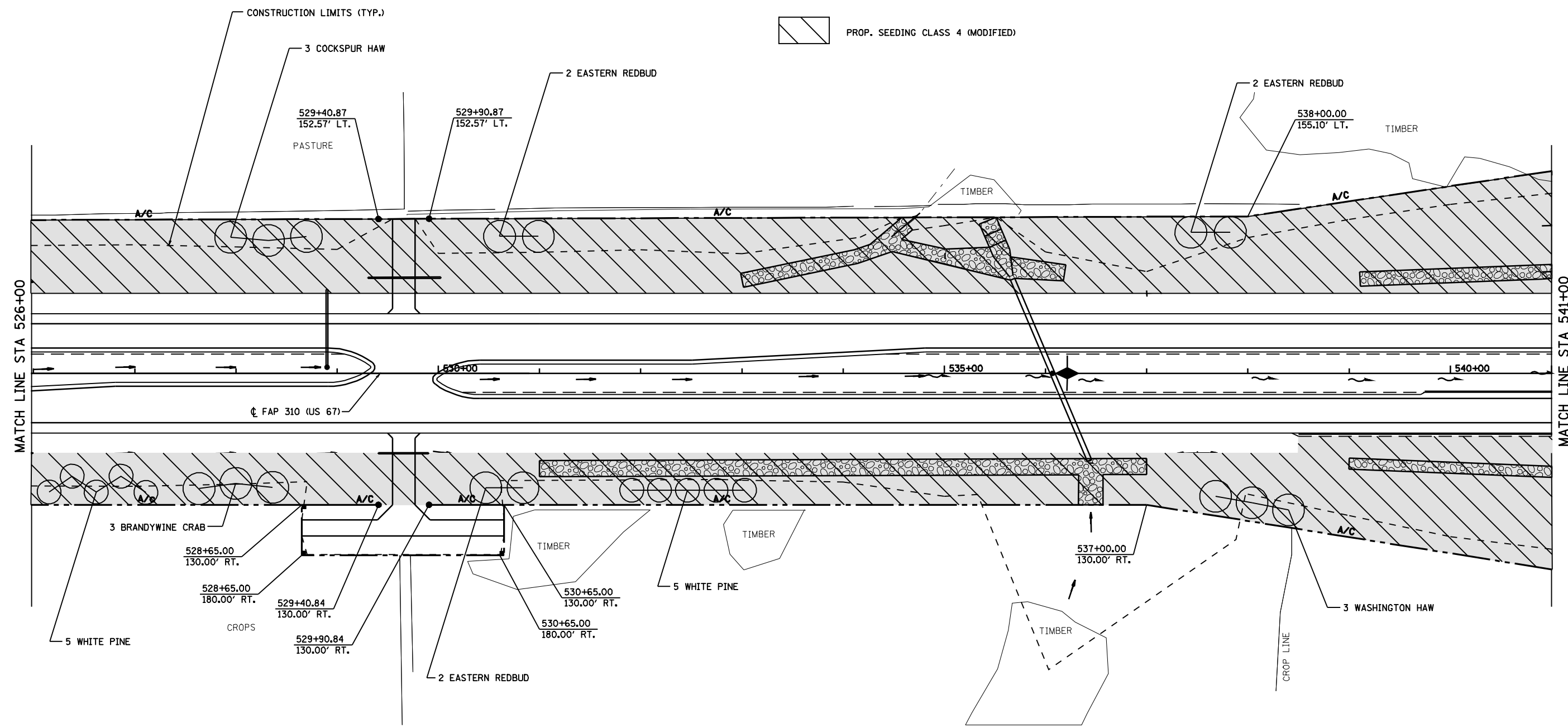


REVISIONS	
NAME	DATE

ILLINOIS DEPARTMENT OF TRANSPORTATION  
 FAP ROUTE 310  
 LANDSCAPING PLAN  
 STA 511+00 TO STA 526+00

SCALE: VERT. \_\_\_\_\_  
 HORIZ. \_\_\_\_\_  
 DATE \_\_\_\_\_ DRAWN BY \_\_\_\_\_  
 CHECKED BY \_\_\_\_\_

F.A.P. RTE.	SECTION	COUNTY	TOTAL SHEETS	SHEET NO.
310	69-12(LS-1)	MORGAN	20	8
STA. 526+00		TO STA. 541+00		
FED. ROAD DIST. NO.		ILLINOIS FED. AID PROJECT		



REVISIONS	
NAME	DATE

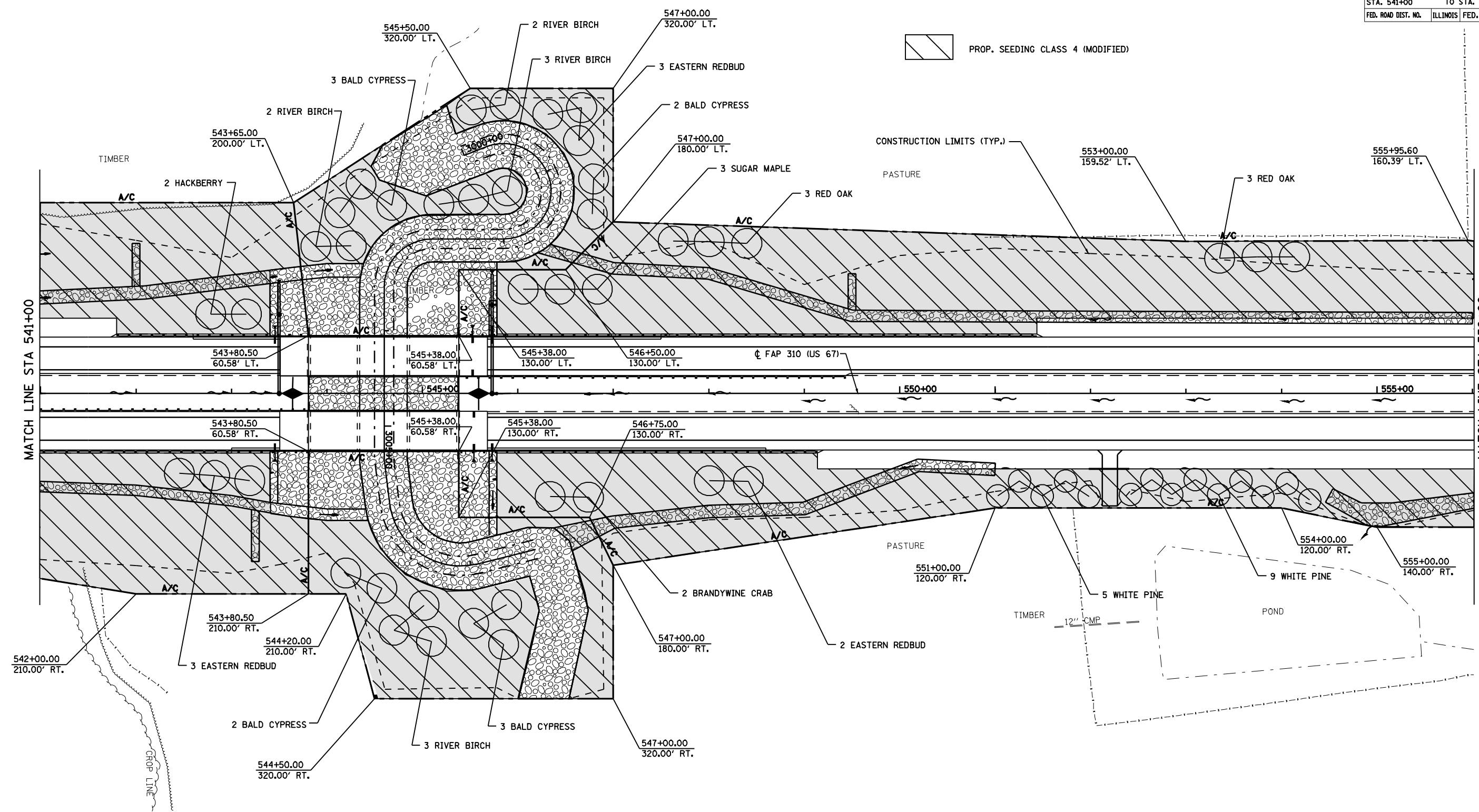
ILLINOIS DEPARTMENT OF TRANSPORTATION  
 FAP ROUTE 310  
 LANDSCAPING PLAN  
 STA 526+00 TO STA 541+00

SCALE: VERT. \_\_\_\_\_  
 HORIZ. \_\_\_\_\_

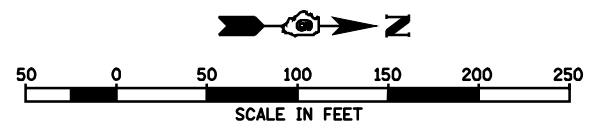
DATE \_\_\_\_\_ DRAWN BY \_\_\_\_\_  
 CHECKED BY \_\_\_\_\_



F.A.P. RTE.	SECTION	COUNTY	TOTAL SHEETS	SHEET NO.
310	69-12(LS-1)	MORGAN	20	9
STA. 541+00		TO STA. 556+00		
FED. ROAD DIST. NO.		ILLINOIS	FED. AID PROJECT	



PROP. SEEDING CLASS 4 (MODIFIED)



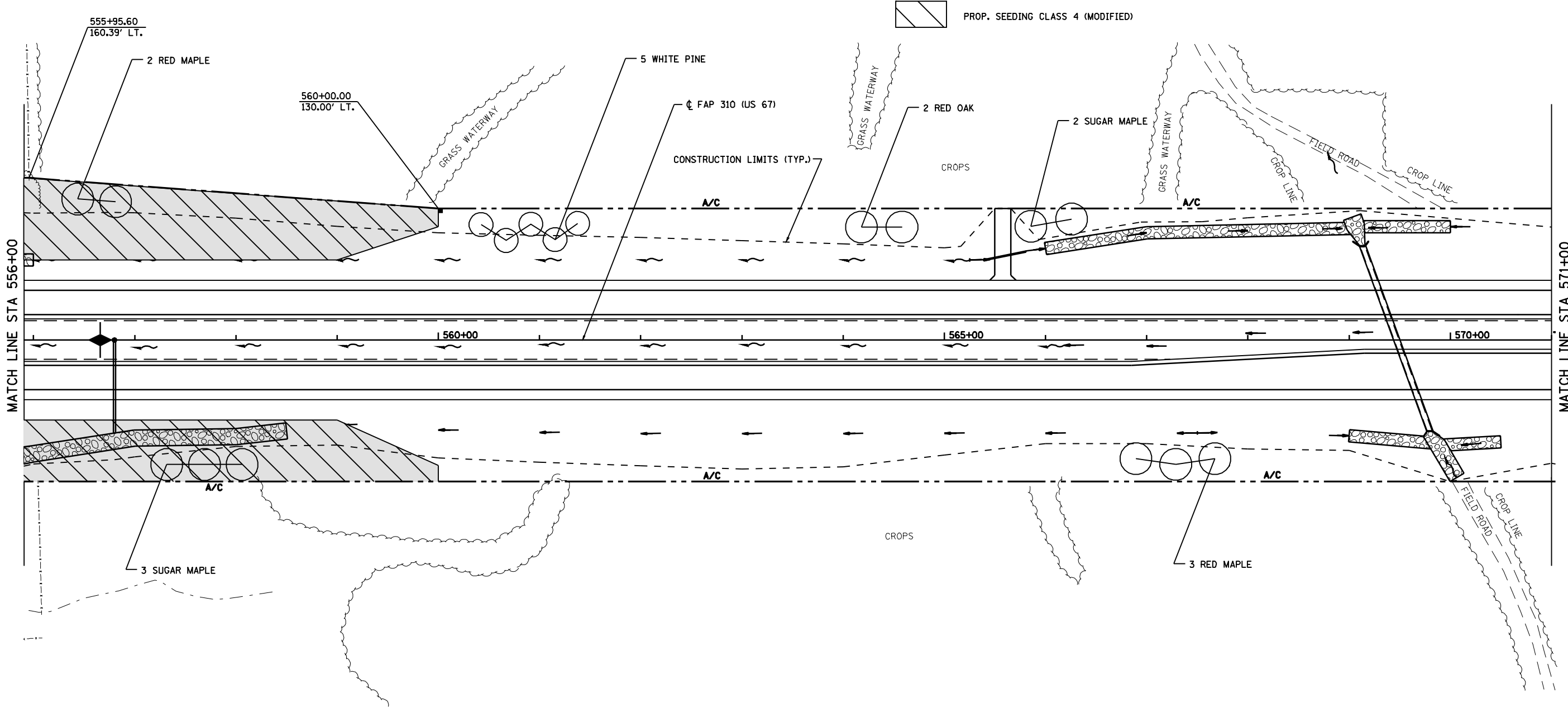
REVISIONS	
NAME	DATE

ILLINOIS DEPARTMENT OF TRANSPORTATION  
 FAP ROUTE 310  
 LANDSCAPING PLAN  
 STA 541+00 TO STA 556+00

SCALE: VERT. \_\_\_\_\_  
 HORIZ. \_\_\_\_\_

DRAWN BY \_\_\_\_\_  
 CHECKED BY \_\_\_\_\_

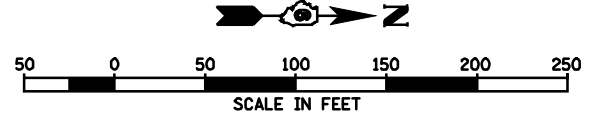
F.A.P. RTE.	SECTION	COUNTY	TOTAL SHEETS	SHEET NO.
310	69-12(LS-1)	MORGAN	20	10
STA. 556+00		TO STA. 571+00		
FED. ROAD DIST. NO.		ILLINOIS	FED. AID PROJECT	



PROP. SEEDING CLASS 4 (MODIFIED)

MATCH LINE STA 556+00

MATCH LINE STA 571+00



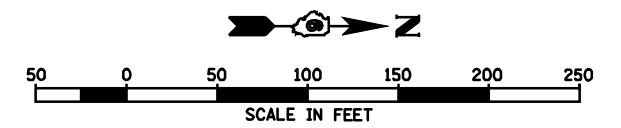
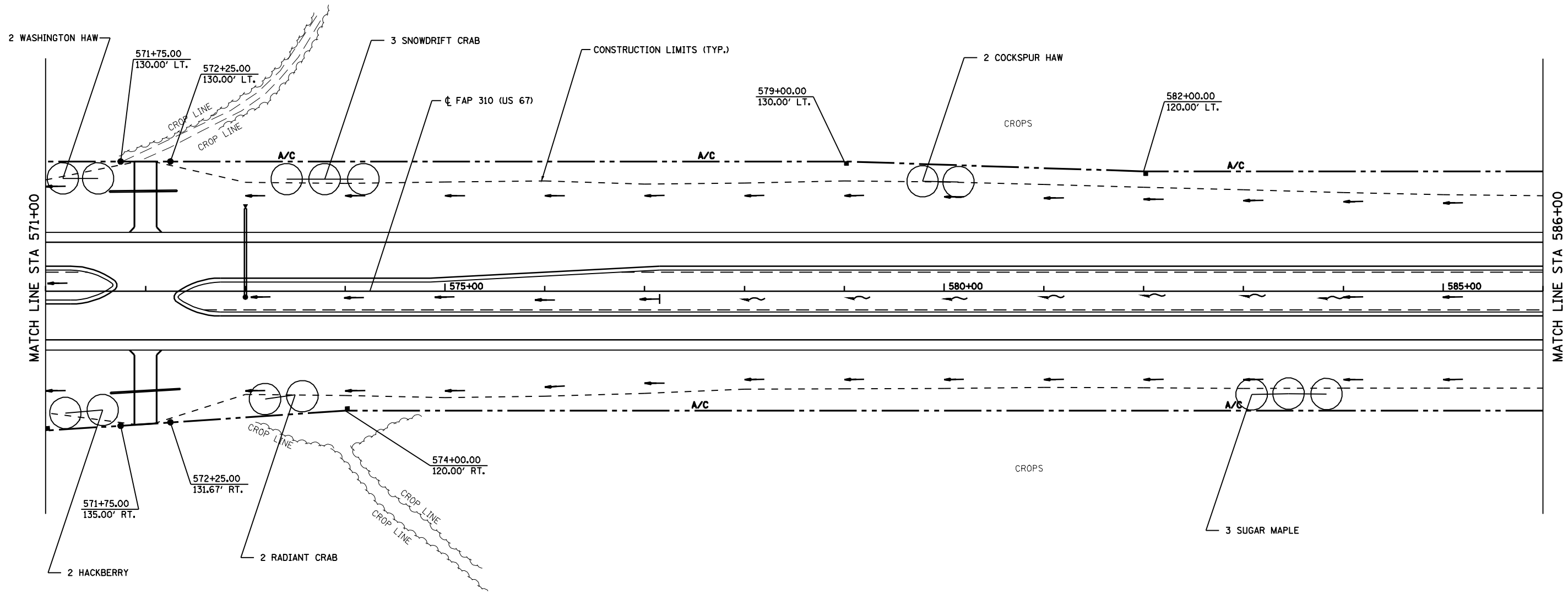
REVISIONS	
NAME	DATE

ILLINOIS DEPARTMENT OF TRANSPORTATION  
 FAP ROUTE 310  
 LANDSCAPING PLAN  
 STA 556+00 TO STA 571+00

SCALE: VERT. \_\_\_\_\_  
 HORIZ. \_\_\_\_\_

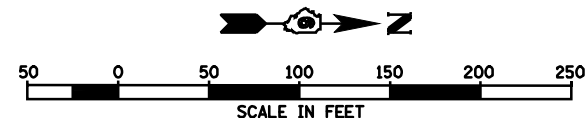
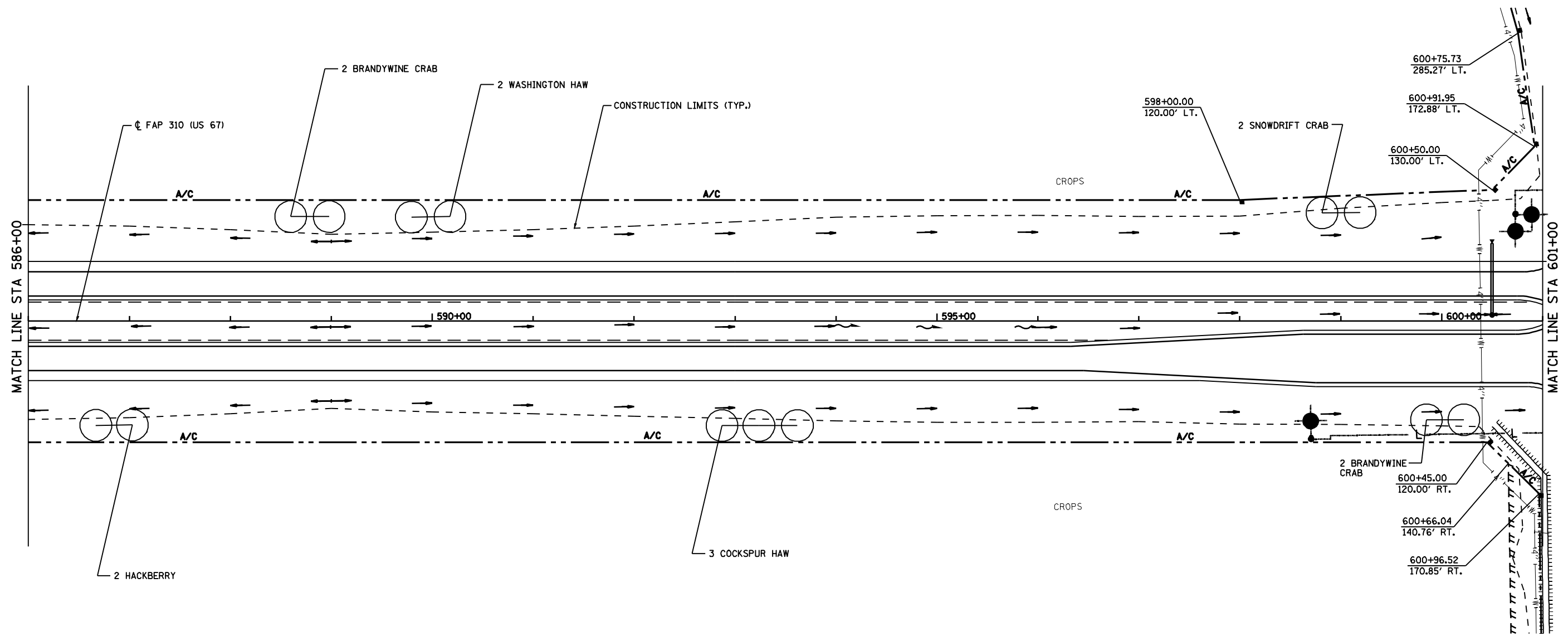
DRAWN BY \_\_\_\_\_  
 CHECKED BY \_\_\_\_\_

F.A.P. RTE.	SECTION	COUNTY	TOTAL SHEETS	SHEET NO.
310	69-12(LS-1)	MORGAN	20	11
STA. 571+00		TO STA. 586+00		
FED. ROAD DIST. NO.		ILLINOIS	FED. AID PROJECT	



REVISIONS		ILLINOIS DEPARTMENT OF TRANSPORTATION
NAME	DATE	
		FAP ROUTE 310 LANDSCAPING PLAN STA 571+00 TO STA 586+00
SCALE:	VERT. HORIZ.	DRAWN BY CHECKED BY

F.A.P. RTE.	SECTION	COUNTY	TOTAL SHEETS	SHEET NO.
310	69-12(LS-1)	MORGAN	20	12
STA. 586+00		TO STA. 601+00		
FED. ROAD DIST. NO.		ILLINOIS	FED. AID PROJECT	



REVISIONS	
NAME	DATE

ILLINOIS DEPARTMENT OF TRANSPORTATION

FAP ROUTE 310  
LANDSCAPING PLAN  
STA 586+00 TO STA 601+00

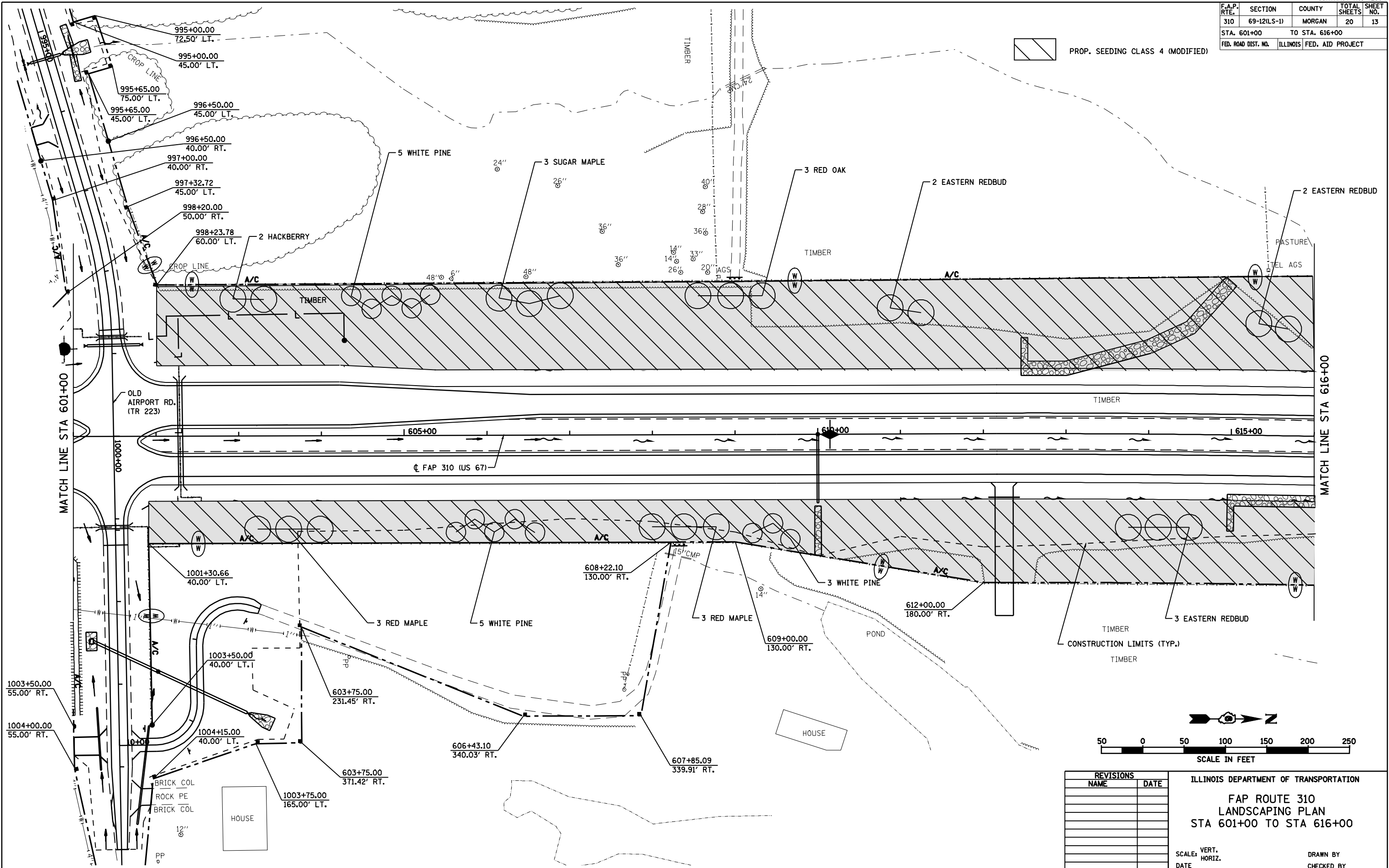
SCALE: VERT. \_\_\_\_\_  
HORIZ. \_\_\_\_\_

DATE \_\_\_\_\_ DRAWN BY \_\_\_\_\_  
CHECKED BY \_\_\_\_\_

F.A.P. RTE.	SECTION	COUNTY	TOTAL SHEETS	SHEET NO.
310	69-12(LS-1)	MORGAN	20	13

STA. 601+00 TO STA. 616+00  
 FED. ROAD DIST. NO. ILLINOIS FED. AID PROJECT

PROP. SEEDING CLASS 4 (MODIFIED)



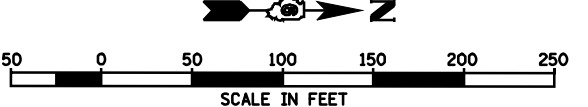
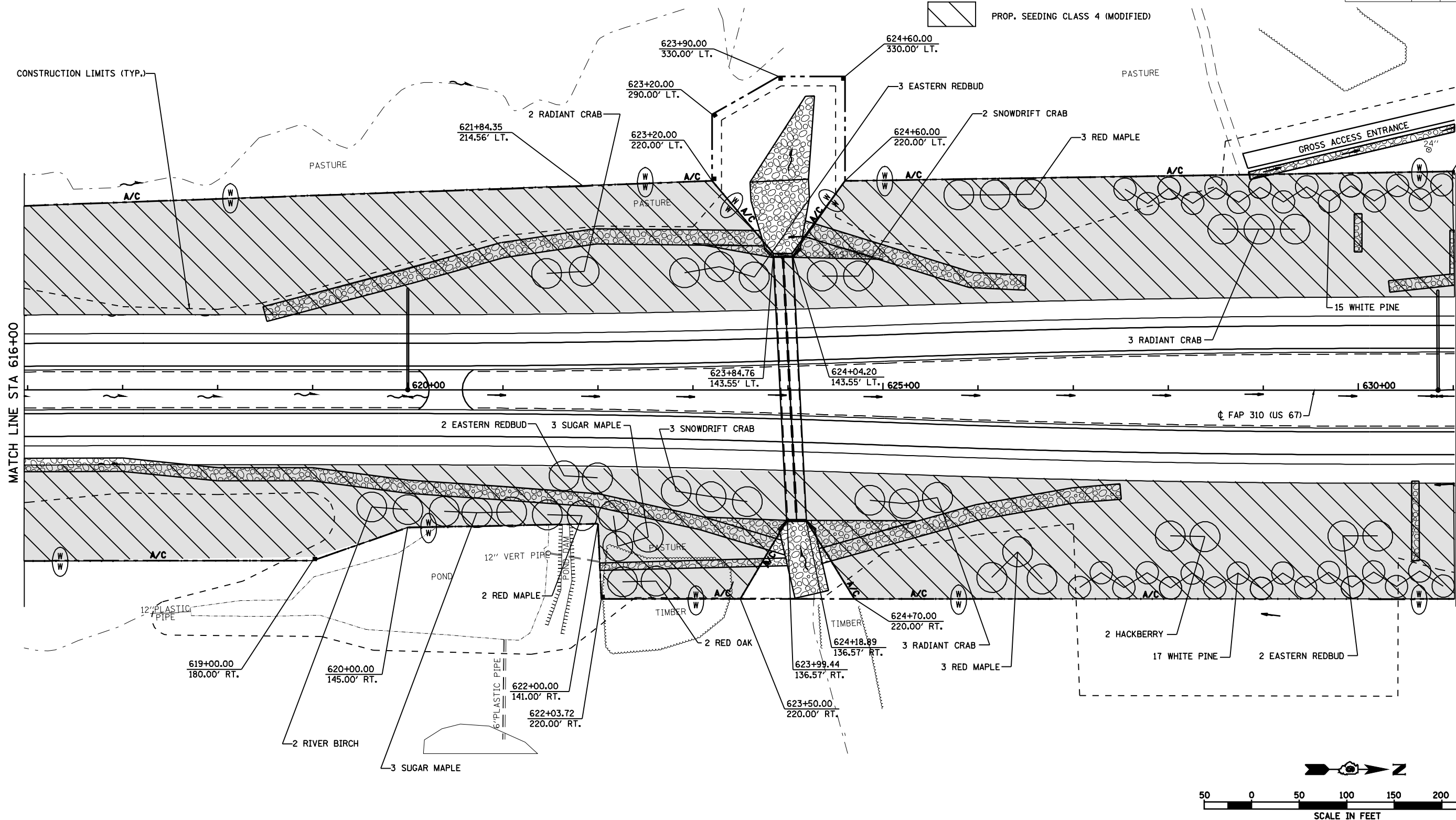
REVISIONS	
NAME	DATE

ILLINOIS DEPARTMENT OF TRANSPORTATION  
 FAP ROUTE 310  
 LANDSCAPING PLAN  
 STA 601+00 TO STA 616+00

SCALE: VERT. \_\_\_\_\_  
 HORIZ. \_\_\_\_\_  
 DATE \_\_\_\_\_

DRAWN BY \_\_\_\_\_  
 CHECKED BY \_\_\_\_\_

F.A.P. RTE.	SECTION	COUNTY	TOTAL SHEETS	SHEET NO.
310	69-12(LS-1)	MORGAN	20	14
STA. 616+00		TO STA. 631+00		
FED. ROAD DIST. NO.		ILLINOIS FED. AID PROJECT		



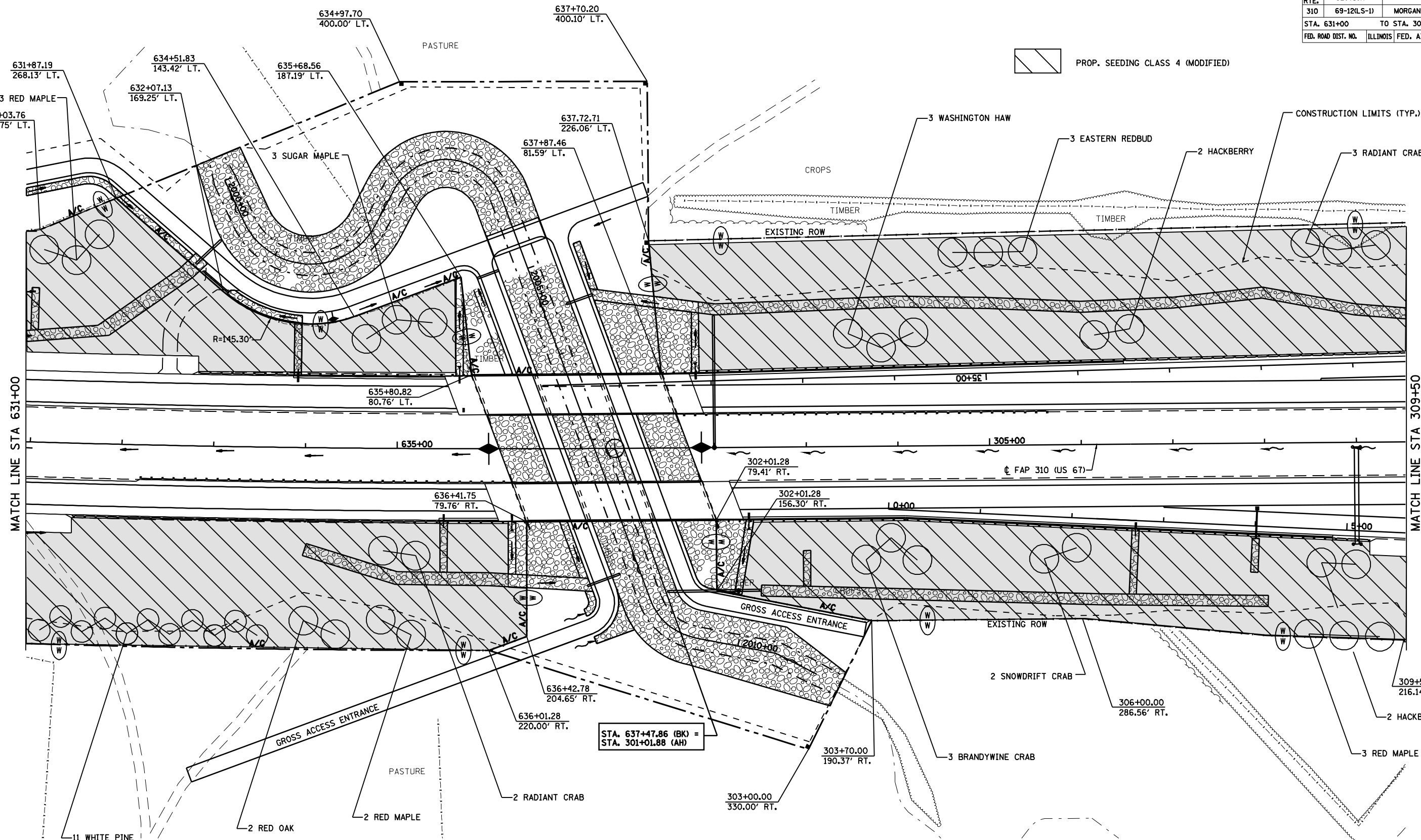
REVISIONS	
NAME	DATE

ILLINOIS DEPARTMENT OF TRANSPORTATION  
 FAP ROUTE 310  
 LANDSCAPING PLAN  
 STA 616+00 TO STA 631+00

SCALE: VERT. \_\_\_\_\_  
 HORIZ. \_\_\_\_\_  
 DATE \_\_\_\_\_ DRAWN BY \_\_\_\_\_  
 CHECKED BY \_\_\_\_\_

F.A.P. RTE.	SECTION	COUNTY	TOTAL SHEETS	SHEET NO.
310	69-12(LS-1)	MORGAN	20	15
STA. 631+00		TO STA. 309+50		
FED. ROAD DIST. NO.		ILLINOIS FED. AID PROJECT		

PROF. SEEDING CLASS 4 (MODIFIED)



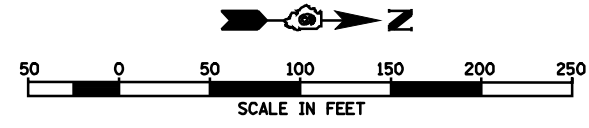
MATCH LINE STA 631+00

MATCH LINE STA 309+50

STA. 637+47.86 (BK) =  
STA. 301+01.88 (AH)

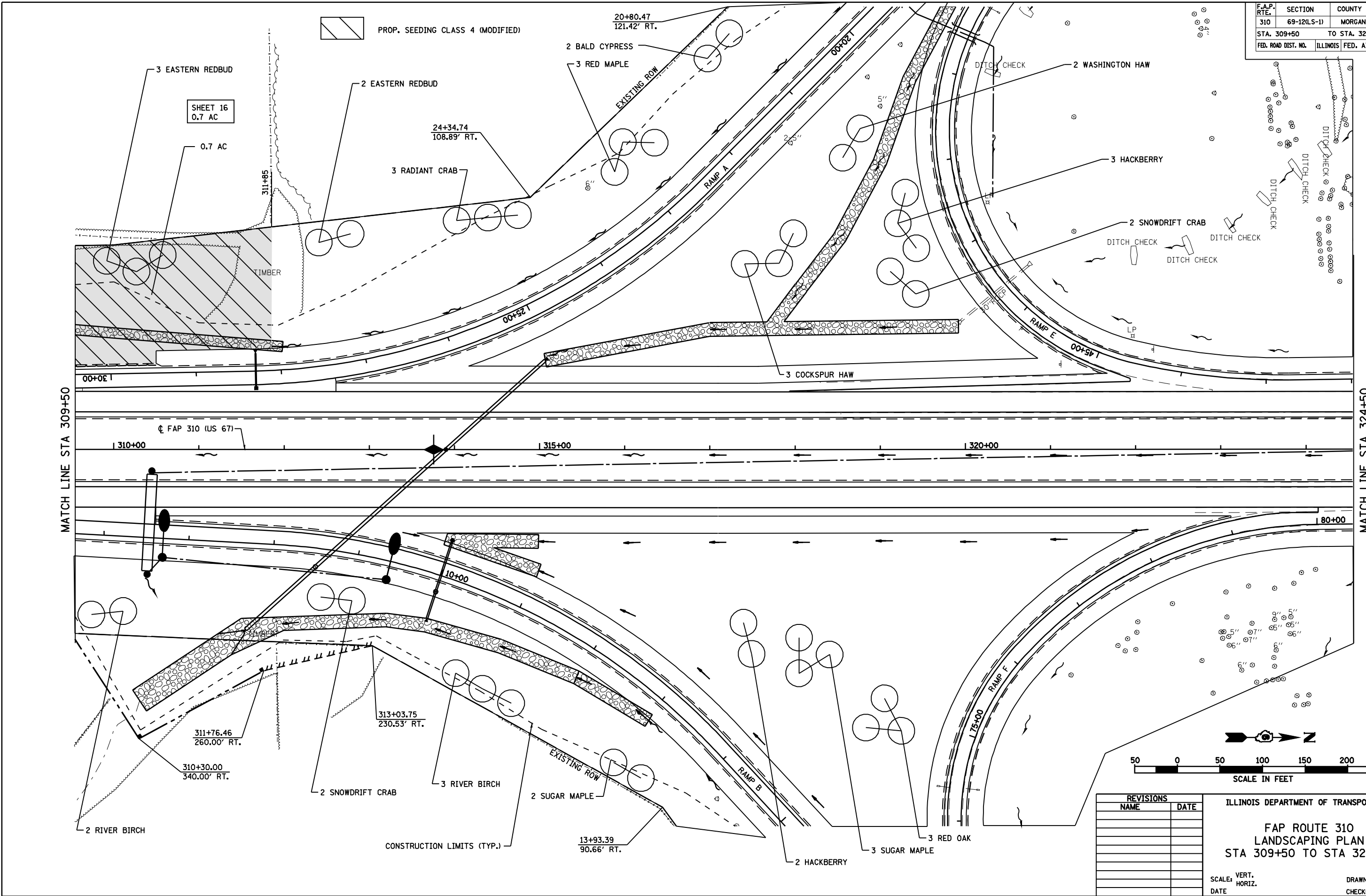
REVISIONS	
NAME	DATE

ILLINOIS DEPARTMENT OF TRANSPORTATION  
FAP ROUTE 310  
LANDSCAPING PLAN  
STA 631+00 TO STA 309+50



SCALE: VERT. \_\_\_\_\_  
HORIZ. \_\_\_\_\_  
DATE \_\_\_\_\_ DRAWN BY \_\_\_\_\_  
CHECKED BY \_\_\_\_\_

F.A.P. RTE.	SECTION	COUNTY	TOTAL SHEETS	SHEET NO.
310	69-12(LS-1)	MORGAN	20	16
STA. 309+50		TO STA. 324+50		
FED. ROAD DIST. NO.		ILLINOIS FED. AID PROJECT		



REVISIONS	
NAME	DATE

ILLINOIS DEPARTMENT OF TRANSPORTATION

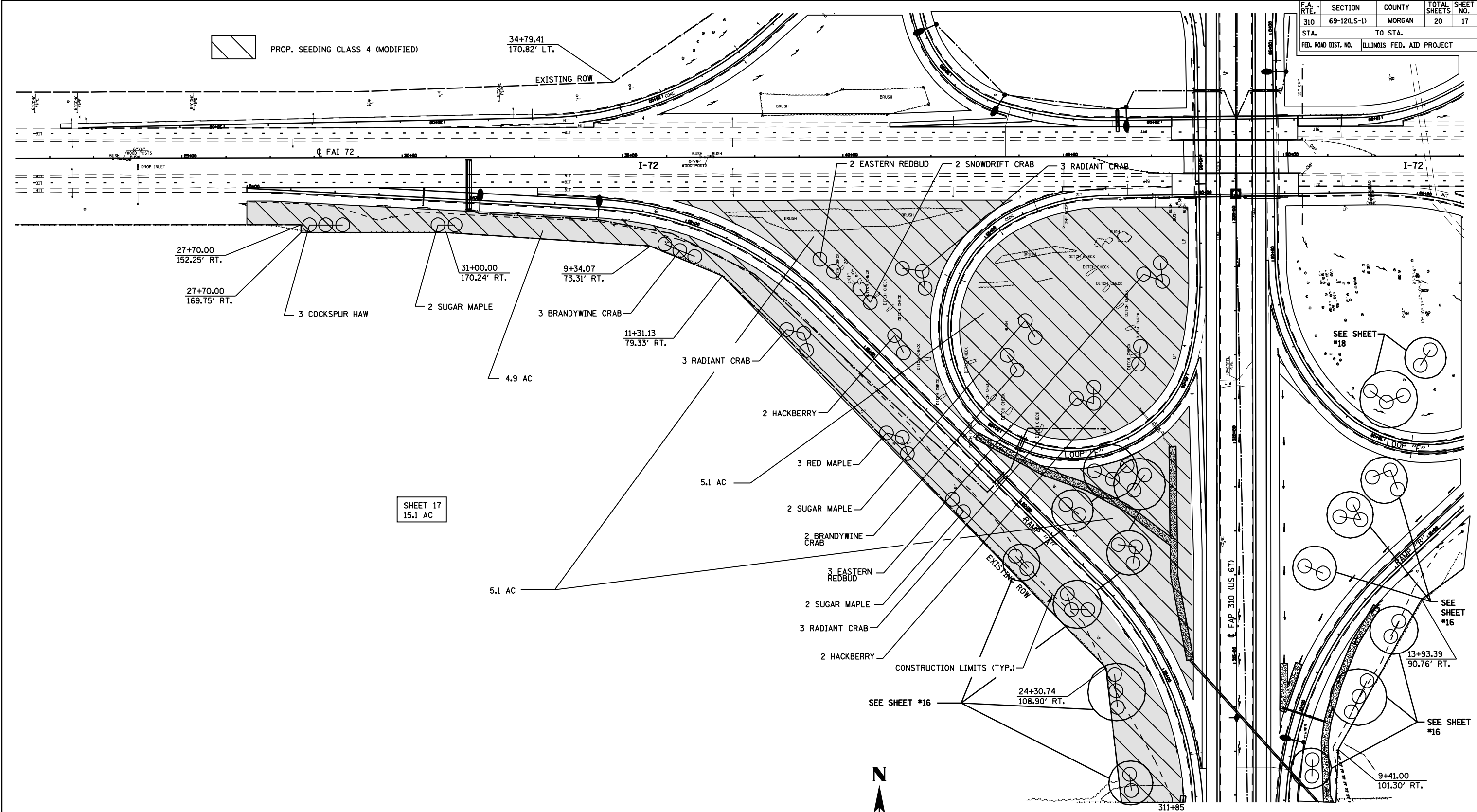
FAP ROUTE 310  
LANDSCAPING PLAN  
STA 309+50 TO STA 324+50

SCALE: VERT. \_\_\_\_\_  
HORIZ. \_\_\_\_\_

DATE \_\_\_\_\_ DRAWN BY \_\_\_\_\_  
CHECKED BY \_\_\_\_\_



F.A. RTE.	SECTION	COUNTY	TOTAL SHEETS	SHEET NO.
310	69-12(LS-1)	MORGAN	20	17
STA. TO STA.		ILLINOIS FED. AID PROJECT		
FED. ROAD DIST. NO.		ILLINOIS FED. AID PROJECT		



SHEET 17  
15.1 AC

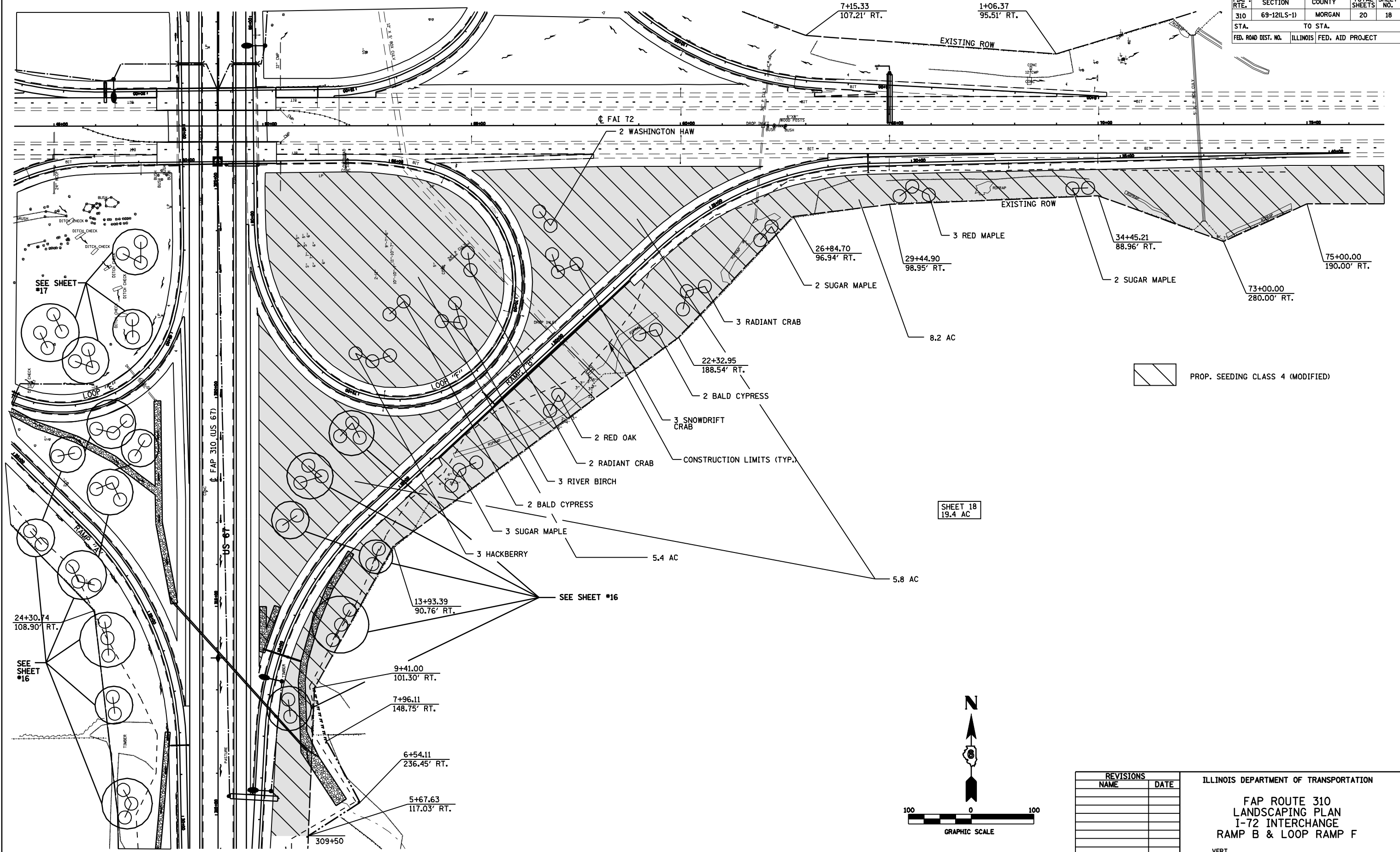
REVISIONS	
NAME	DATE

ILLINOIS DEPARTMENT OF TRANSPORTATION  
**FAP ROUTE 310  
 LANDSCAPING PLAN  
 I-72 INTERCHANGE  
 RAMP A & LOOP RAMP E**

SCALE: VERT. \_\_\_\_\_  
 HORIZ. \_\_\_\_\_

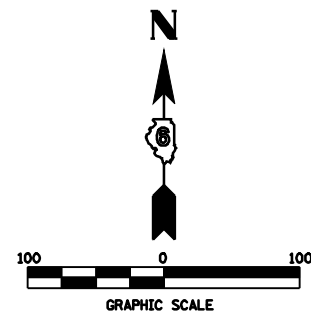
DATE \_\_\_\_\_ DRAWN BY \_\_\_\_\_  
 CHECKED BY \_\_\_\_\_

F.A. RTE.	SECTION	COUNTY	TOTAL SHEETS	SHEET NO.
310	69-12(LS-1)	MORGAN	20	18
STA.		TO STA.		
FED. ROAD DIST. NO.		ILLINOIS FED. AID PROJECT		



SHEET 18  
19.4 AC

PROP. SEEDING CLASS 4 (MODIFIED)



REVISIONS	
NAME	DATE

ILLINOIS DEPARTMENT OF TRANSPORTATION

**FAP ROUTE 310  
LANDSCAPING PLAN  
1-72 INTERCHANGE  
RAMP B & LOOP RAMP F**

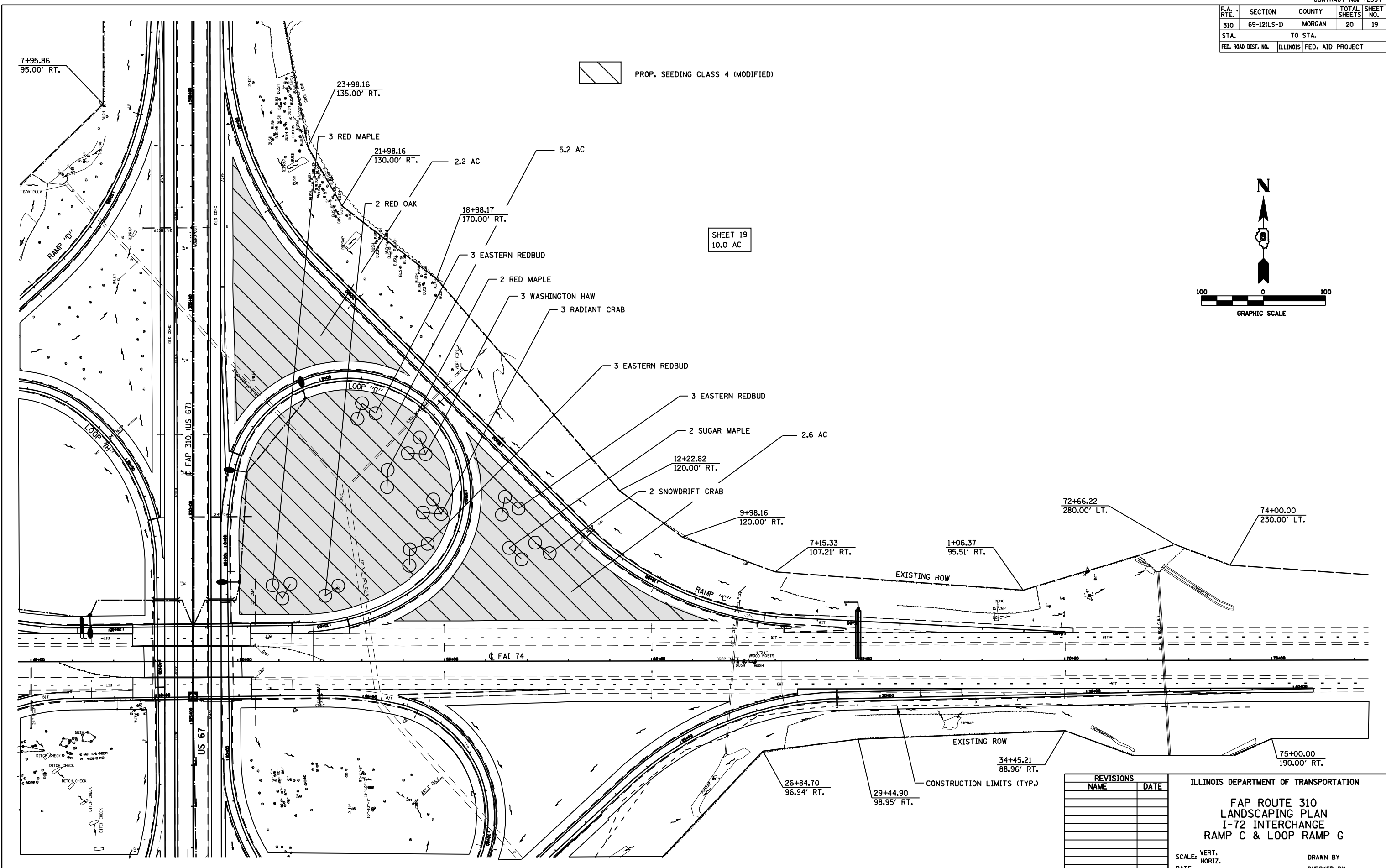
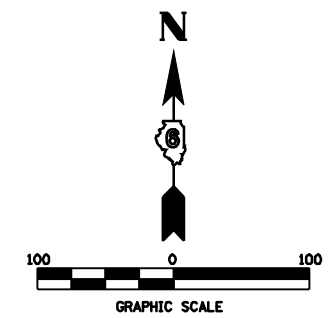
SCALE: VERT. \_\_\_\_\_  
HORIZ. \_\_\_\_\_

DATE \_\_\_\_\_ DRAWN BY \_\_\_\_\_  
CHECKED BY \_\_\_\_\_

F.A. RTE.	SECTION	COUNTY	TOTAL SHEETS	SHEET NO.
310	69-12(LS-1)	MORGAN	20	19
STA.		TO STA.		
FED. ROAD DIST. NO.	ILLINOIS	FED. AID PROJECT		

 PROP. SEEDING CLASS 4 (MODIFIED)

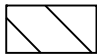
SHEET 19  
10.0 AC

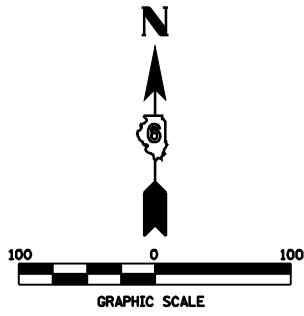


REVISIONS	
NAME	DATE

ILLINOIS DEPARTMENT OF TRANSPORTATION  
**FAP ROUTE 310  
 LANDSCAPING PLAN  
 I-72 INTERCHANGE  
 RAMP C & LOOP RAMP G**  
 SCALE: VERT. \_\_\_\_\_  
 HORIZ. \_\_\_\_\_  
 DATE \_\_\_\_\_ DRAWN BY \_\_\_\_\_  
 CHECKED BY \_\_\_\_\_

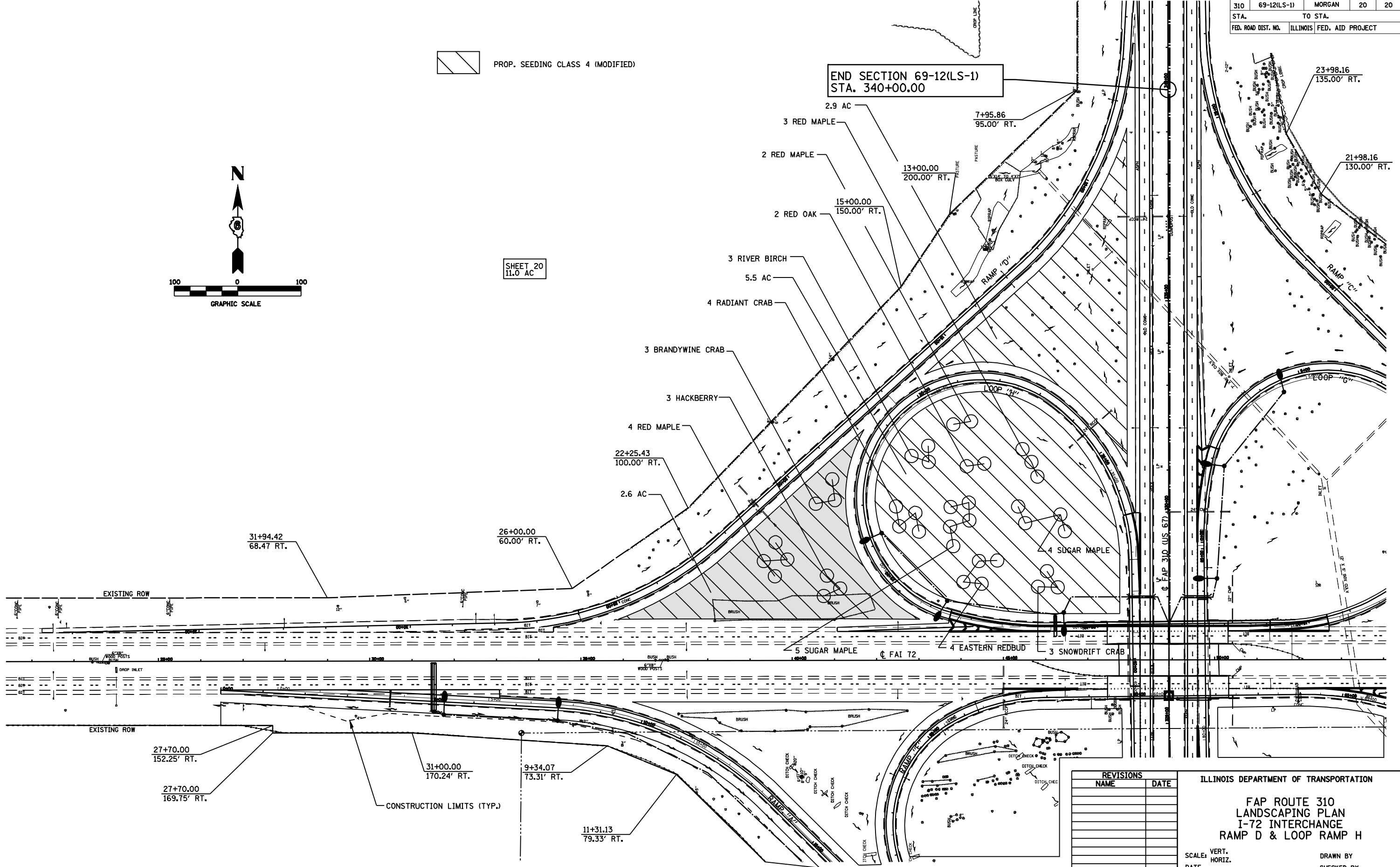
F.A. RTE.	SECTION	COUNTY	TOTAL SHEETS	SHEET NO.
310	69-12(LS-1)	MORGAN	20	20
STA.		TO STA.		
FED. ROAD DIST. NO.		ILLINOIS FED. AID PROJECT		

 PROP. SEEDING CLASS 4 (MODIFIED)



SHEET 20  
11.0 AC

END SECTION 69-12(LS-1)  
STA. 340+00.00



REVISIONS	
NAME	DATE

ILLINOIS DEPARTMENT OF TRANSPORTATION  
**FAP ROUTE 310  
LANDSCAPING PLAN  
I-72 INTERCHANGE  
RAMP D & LOOP RAMP H**

SCALE: VERT. \_\_\_\_\_  
HORIZ. \_\_\_\_\_

DRAWN BY \_\_\_\_\_  
CHECKED BY \_\_\_\_\_