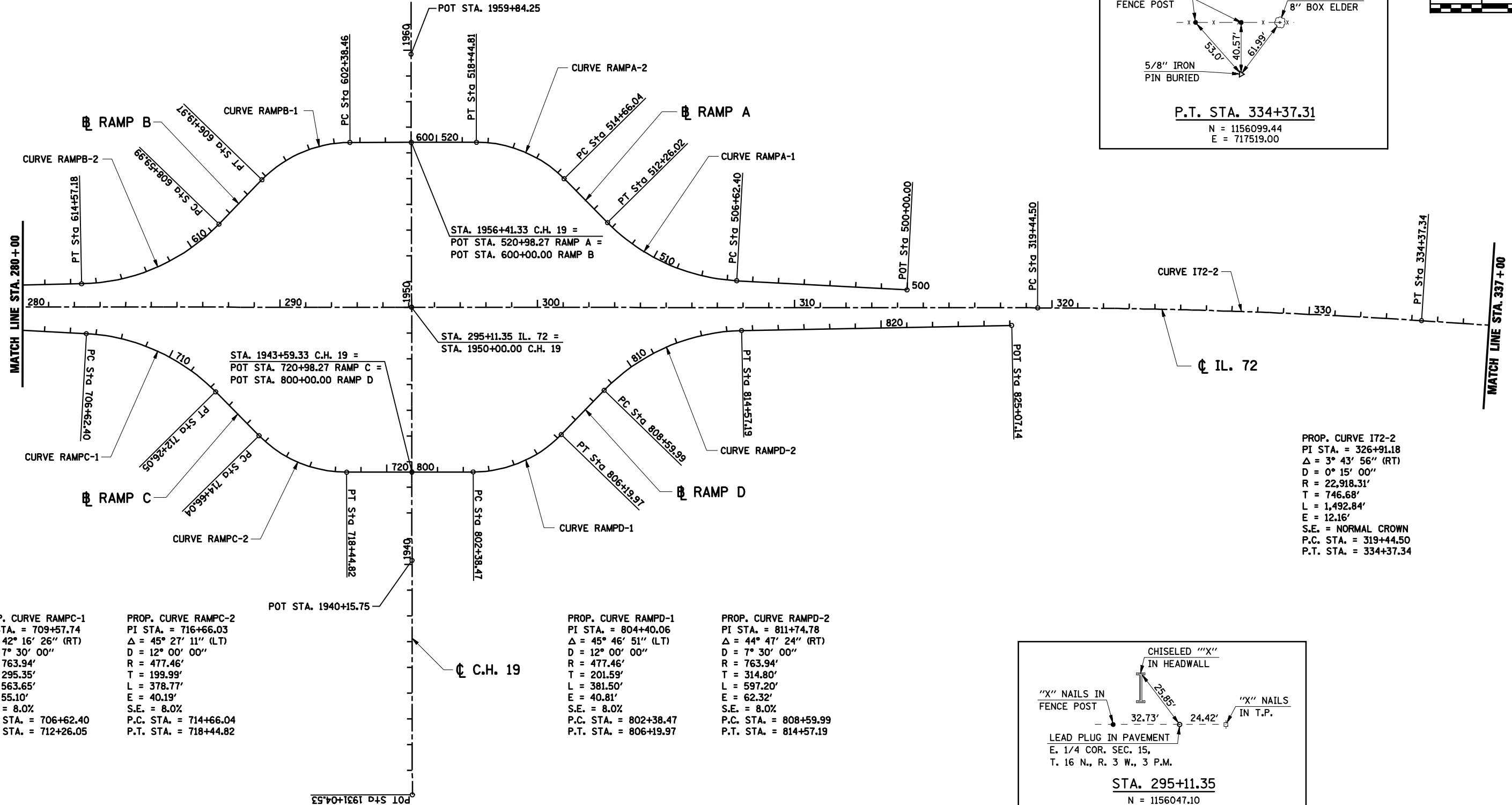
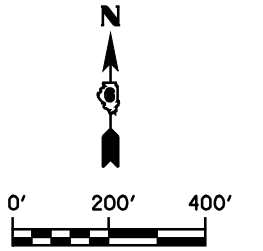
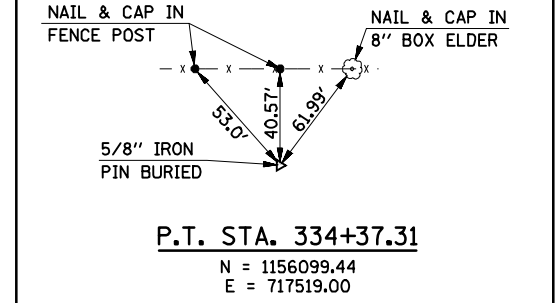
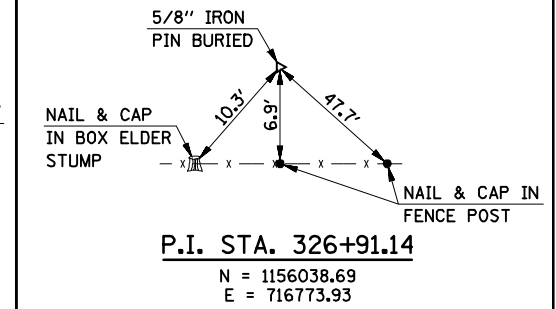
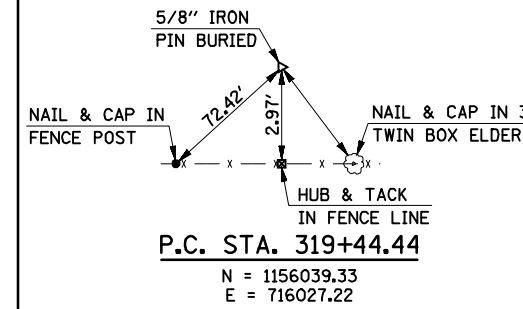


PROP. CURVE RAMPB-2  
 PI STA. = 611+74.78  
 $\Delta = 44^\circ 47' 23''$  (RT)  
 D = 7° 30' 00"  
 R = 763.94'  
 T = 314.79'  
 L = 597.19'  
 E = 62.32'  
 S.E. = 8.0%  
 P.C. STA. = 608+59.99  
 P.T. STA. = 614+57.18

PROP. CURVE RAMPB-1  
 PI STA. = 604+40.05  
 $\Delta = 45^\circ 46' 54''$  (LT)  
 D = 12° 00' 00"  
 R = 477.46'  
 T = 201.60'  
 L = 381.51'  
 E = 40.82'  
 S.E. = 8.0%  
 P.C. STA. = 602+38.46  
 P.T. STA. = 606+19.97

PROP. CURVE RAMP A-2  
 PI STA. = 516+66.03  
 $\Delta = 45^\circ 27' 09''$  (LT)  
 D = 12° 00' 00"  
 R = 477.46'  
 T = 199.98'  
 L = 378.77'  
 E = 40.19'  
 S.E. = 8.0%  
 P.C. STA. = 514+66.04  
 P.T. STA. = 518+44.81

PROP. CURVE RAMP A-1  
 PI STA. = 509+57.73  
 $\Delta = 42^\circ 16' 19''$  (RT)  
 D = 7° 30' 00"  
 R = 763.94'  
 T = 295.33'  
 L = 563.62'  
 E = 55.10'  
 S.E. = 8.0%  
 P.C. STA. = 506+62.40  
 P.T. STA. = 512+26.02



PROP. CURVE RAMP C-1  
 PI STA. = 709+57.74  
 $\Delta = 42^\circ 16' 26''$  (RT)  
 D = 7° 30' 00"  
 R = 763.94'  
 T = 295.35'  
 L = 563.65'  
 E = 55.10'  
 S.E. = 8.0%  
 P.C. STA. = 706+62.40  
 P.T. STA. = 712+26.05

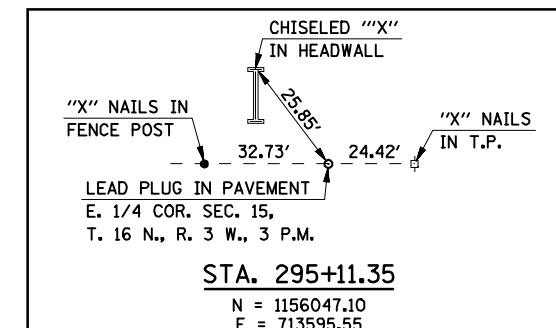
PROP. CURVE RAMP C-2  
 PI STA. = 716+66.03  
 $\Delta = 45^\circ 27' 11''$  (LT)  
 D = 12° 00' 00"  
 R = 477.46'  
 T = 199.99'  
 L = 378.77'  
 E = 40.19'  
 S.E. = 8.0%  
 P.C. STA. = 714+66.04  
 P.T. STA. = 718+44.82

POT STA. 1940+15.75  
 C.H. 19

PROP. CURVE RAMP D-1  
 PI STA. = 804+40.06  
 $\Delta = 45^\circ 46' 51''$  (LT)  
 D = 12° 00' 00"  
 R = 477.46'  
 T = 201.59'  
 L = 381.50'  
 E = 40.81'  
 S.E. = 8.0%  
 P.C. STA. = 802+38.47  
 P.T. STA. = 806+19.97

PROP. CURVE RAMP D-2  
 PI STA. = 811+74.78  
 $\Delta = 44^\circ 47' 24''$  (RT)  
 D = 7° 30' 00"  
 R = 763.94'  
 T = 314.80'  
 L = 597.20'  
 E = 62.32'  
 S.E. = 8.0%  
 P.C. STA. = 808+59.99  
 P.T. STA. = 814+57.19

PROP. CURVE I72-2  
 PI STA. = 326+91.18  
 $\Delta = 3^\circ 43' 56''$  (RT)  
 D = 0° 15' 00"  
 R = 22,918.31'  
 T = 746.68'  
 L = 1,492.84'  
 E = 12.16'  
 S.E. = NORMAL CROWN  
 P.C. STA. = 319+44.50  
 P.T. STA. = 334+37.34



FILE NAME =	USER NAME = laughlinr1	DESIGNED -	REVISED -
e:\pwwork\p\WIDOT\LAUGHLINRL\0184389\16AT02.SHT		DRAWN - AAD	REVISED -
PLOT SCALE = NONE		CHECKED - JAC	REVISED -
PLOT DATE = Feb-11-2010 08:58:24AM		DATE - 06/11/07	REVISED -

**STATE OF ILLINOIS  
 DEPARTMENT OF TRANSPORTATION**

<b>I-72 ALIGNMENT</b>			
<b>STA. 280 + 00 TO STA. 337 + 00</b>			
SCALE:	SHEET NO.	OF SHEETS	STA. TO STA.

F.A.I. RTE.	SECTION	COUNTY	TOTAL SHEETS	SHEET NO.
72	(84-10-2)RS-3, (84-10-3)RS-4	SANGAMON	61	26
CONTRACT NO. 72910				
FED. ROAD DIST. NO. 2 ILLINOIS FED. AID PROJECT				