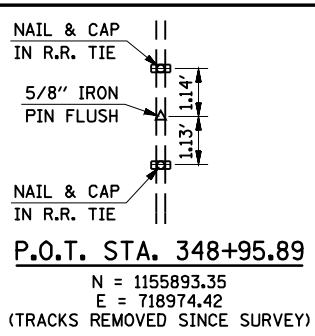


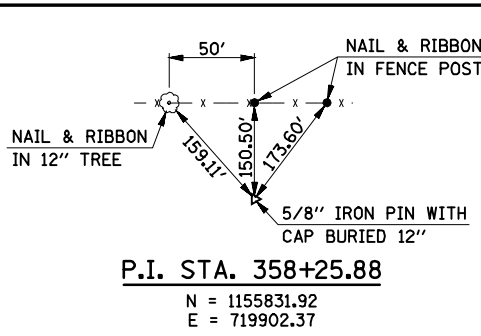
P.C. STA. 340+87.10

N = 1155946.59
E = 718167.37



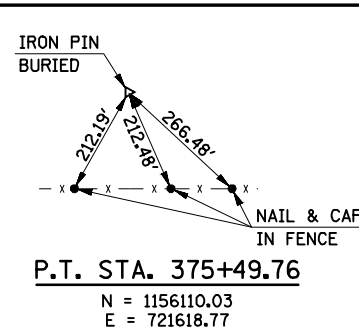
P.O.T. STA. 348+95.89

N = 1155893.35
E = 718974.42
(TRACKS REMOVED SINCE SURVEY)



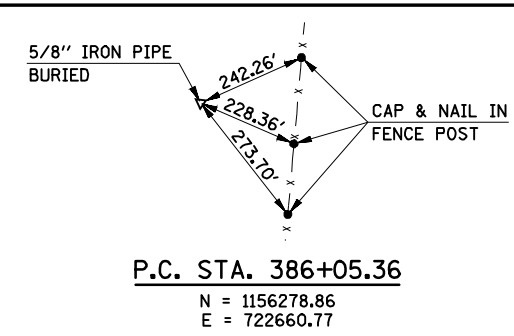
P.I. STA. 358+25.88

N = 1155831.92
E = 719902.37



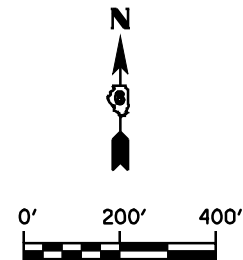
P.T. STA. 375+49.76

N = 1156110.03
E = 721618.77

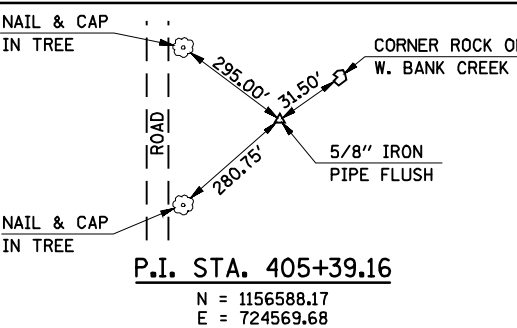
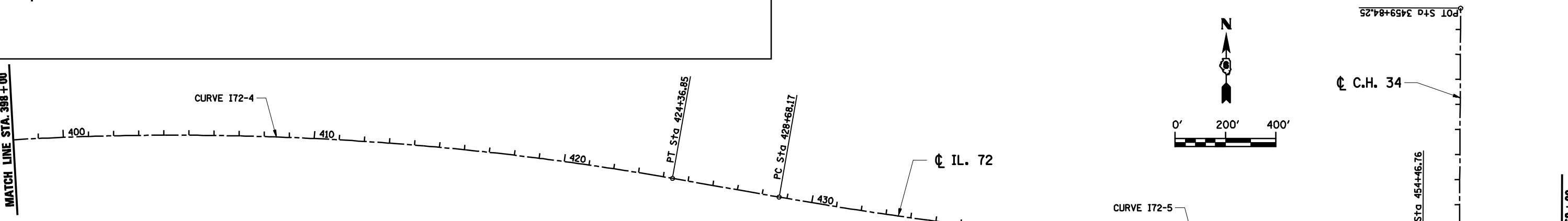
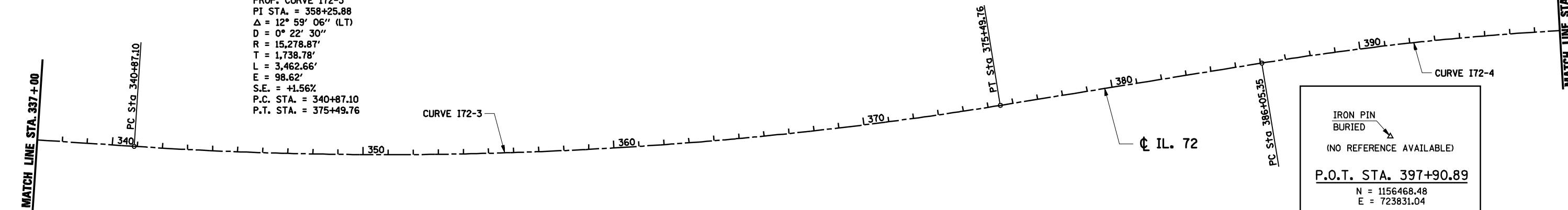


P.C. STA. 386+05.36

N = 1156278.86
E = 722660.77

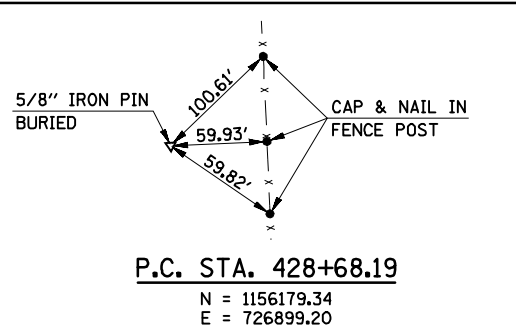


PROP. CURVE I72-3
PI STA. = 358+25.88
 $\Delta = 12^\circ 59' 06''$ (LT)
D = $0^\circ 22' 30''$
R = 15,278.87'
T = 1,738.78'
L = 3,462.66'
E = 98.62'
S.E. = +1.56%
P.C. STA. = 340+87.10
P.T. STA. = 375+49.76



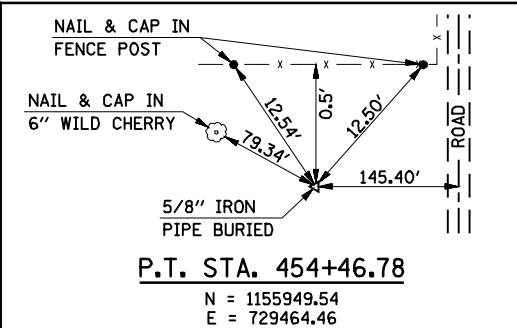
P.I. STA. 405+39.16

N = 1156588.17
E = 724569.68



P.C. STA. 428+68.17

N = 1156179.34
E = 726899.20



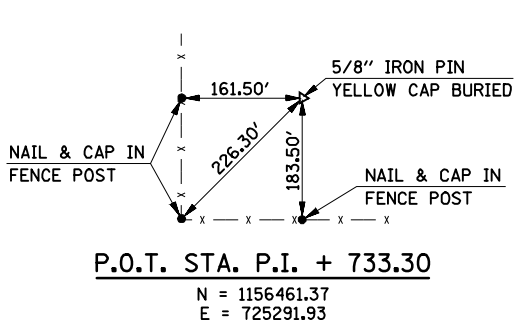
P.T. STA. 454+46.78

N = 1155949.54
E = 729464.46

PROP. CURVE I72-4
PI STA. = 405+39.15
 $\Delta = 19^\circ 09' 27''$ (RT)
D = $0^\circ 30' 00''$
R = 11,459.16'
T = 1,933.80'
L = 3,831.50'
E = 162.02'
S.E. = -1.56%
P.C. STA. = 386+05.35
P.T. STA. = 424+36.85

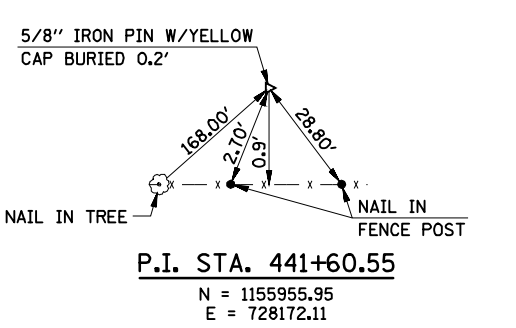
PROP. CURVE I72-5
PI STA. = 441+60.54
 $\Delta = 9^\circ 40' 11''$ (LT)
D = $0^\circ 22' 30''$
R = 15,278.87'
T = 1,292.36'
L = 2,578.59'
E = 54.56'
S.E. = +1.56%
P.C. STA. = 428+68.17
P.T. STA. = 454+46.76

STA. 455+92.16 IL. 72 =
POT STA. 3450+00.00 C.H. 34



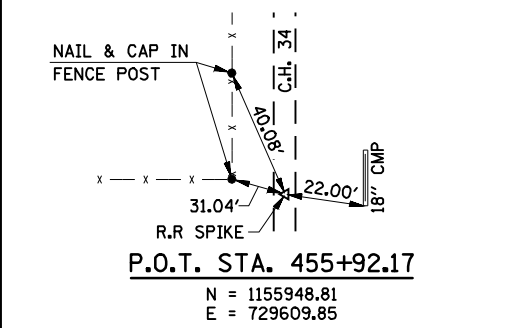
P.O.T. STA. P.I. + 733.30

N = 1156461.37
E = 725291.93



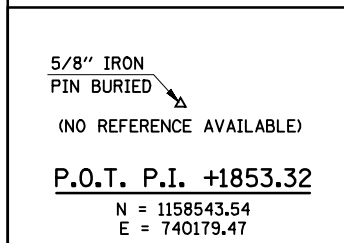
P.I. STA. 441+60.55

N = 1155955.95
E = 728172.11



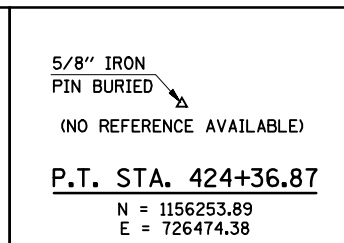
P.O.T. STA. 455+92.17

N = 1155948.81
E = 729609.85



P.O.T. P.I. +1853.32

N = 1158543.54
E = 740179.47



P.T. STA. 424+36.87

N = 1156253.89
E = 726474.38

FILE NAME =	USER NAME = laughlinr1
es:\pwwork\pwwork\LAUGHLINRL\0184389\7016AT03.SHT	
PLOT SCALE = NONE	
PLOT DATE = Feb-11-2010 08:58:27AM	

DESIGNED -	REVISED -
DRAWN - AAD	REVISED -
CHECKED - JAC	REVISED -
DATE - 06/11/07	REVISED -

STATE OF ILLINOIS
DEPARTMENT OF TRANSPORTATION

I-72 ALIGNMENT			
STA. 337+00 TO STA. 460+00			
SCALE:	SHEET NO.	OF SHEETS	STA. TO STA.

F.A.I. RTE.	SECTION	COUNTY	TOTAL SHEETS	SHEET NO.
72	(84-10-2)RS-3, (84-10-3)RS-4	SANGAMON	61	27
CONTRACT NO. 72910				
FED. ROAD DIST. NO. 2 ILLINOIS FED. AID PROJECT				