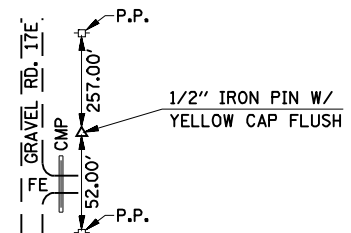


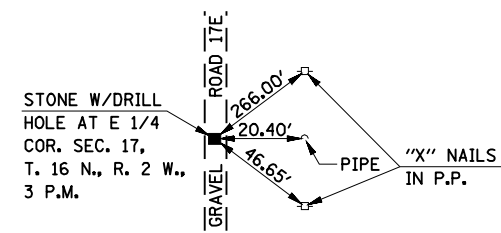
P.O.T. STA. 482+47.39

N = 1155935.64
E = 732265.09



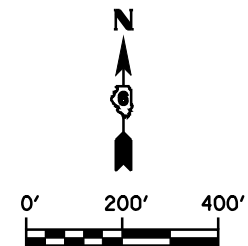
P.O.T. STA. 509+23.00

N = 1155922.37
E = 734940.61



STA. 509+04.68, 8.60' RT.

N = 1155913.86
E = 734922.28



MATCH LINE STA. 460+00



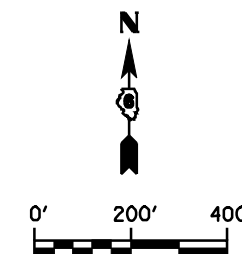
CL IL. 72

MATCH LINE STA. 520+00

5/8" IRON
PIN BURIED
(NO REFERENCE AVAILABLE)

P.O.T. STA. 536+70.77

N = 1155908.74
E = 737688.35



MATCH LINE STA. 520+00



CL IL. 72

POT Sta 570+01.15

FILE NAME =	USER NAME = laughlinr1	DESIGNED -	REVISED -
e:\pwwork\pwidot\LAUGHLINRL\10184389\7016AT04.SHT		DRAWN - AAD	REVISED -
PLOT SCALE = NONE		CHECKED - JAC	REVISED -
PLOT DATE = Feb-11-2010 08:58:29AM		DATE - 06/11/07	REVISED -

STATE OF ILLINOIS
DEPARTMENT OF TRANSPORTATION

IL-72 ALIGNMENT			
STA. 460+00 TO 570+00			
SCALE:	SHEET NO.	OF SHEETS	STA. TO STA.

F.A.I. RTE.	SECTION	COUNTY	TOTAL SHEETS	SHEET NO.
72	(84-10-2)RS-3, (84-10-3)RS-4	SANGAMON	61	28
CONTRACT NO. 72910				
FED. ROAD DIST. NO. 2 ILLINOIS FED. AID PROJECT				