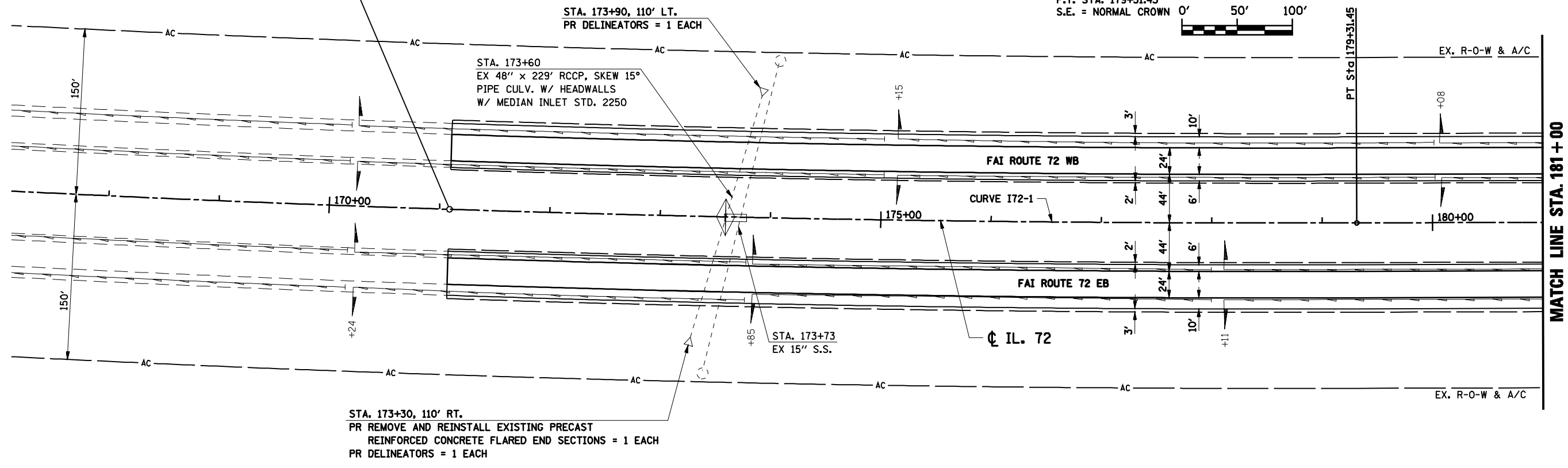
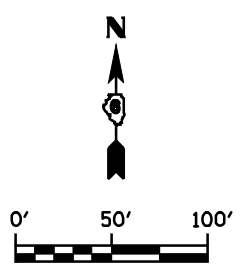
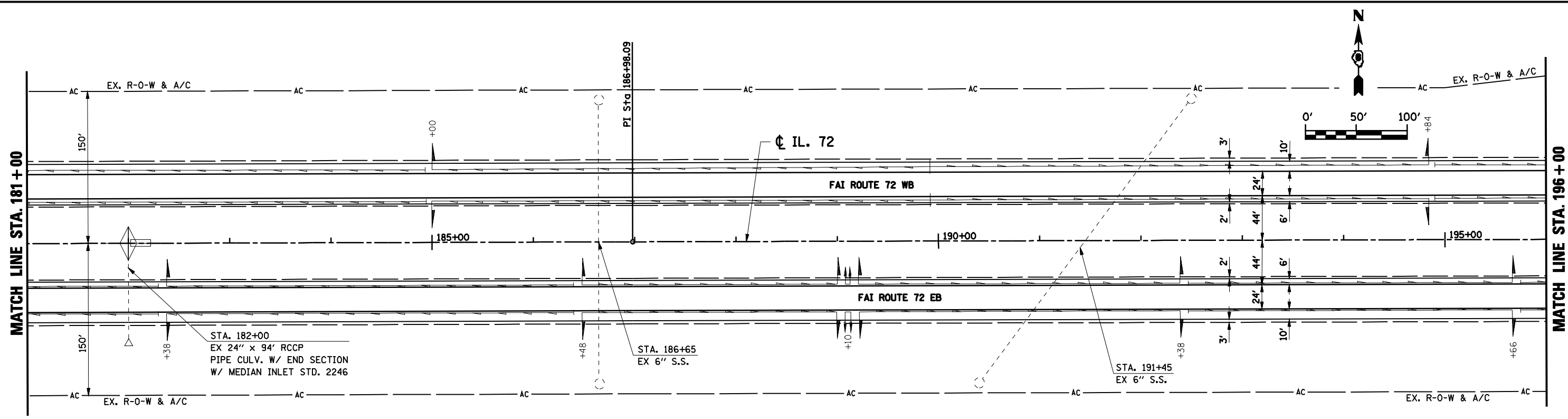


**BEGIN RESURFACING  
PROJECT STA. 171+09**

**CURVE I72-1**  
 PI STA. 170+58.94  
 $\Delta = 4^\circ 21' 53''$  (LT)  
 D = 0° 15' 00"  
 R = 22,918.31'  
 T = 873.36'  
 L = 1,745.87'  
 E = 16.63'  
 P.C. STA. 161+85.58  
 P.T. STA. 179+31.45  
 S.E. = NORMAL CROWN



**MATCH LINE STA. 181+00**



**MATCH LINE STA. 181+00**

**MATCH LINE STA. 196+00**

FILE NAME =	USER NAME = laughlinr1	DESIGNED -	REVISED -
es:\pwwork\pwwid\LAUGHLINRL\la0184389\7016PP01.SHT		DRAWN - AAD	REVISED -
PLOT SCALE = NONE		CHECKED - JAC	REVISED -
PLOT DATE = Feb-11-2010 08:58:32AM		DATE - 06/11/07	REVISED -

**STATE OF ILLINOIS  
DEPARTMENT OF TRANSPORTATION**

**I-72 PLAN  
STA. 166+00 TO STA. 196+00**

SCALE: SHEET NO. OF SHEETS STA. 166+00 TO STA. 196+00

F.A.I. RTE.	SECTION	COUNTY	TOTAL SHEETS	SHEET NO.
72	(84-10-2)RS-3, (84-10-3)RS-4	SANGAMON	61	29
CONTRACT NO. 72910				
FED. ROAD DIST. NO. 2 (ILLINOIS) FED. AID PROJECT				