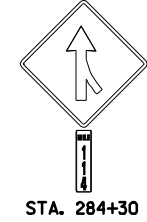


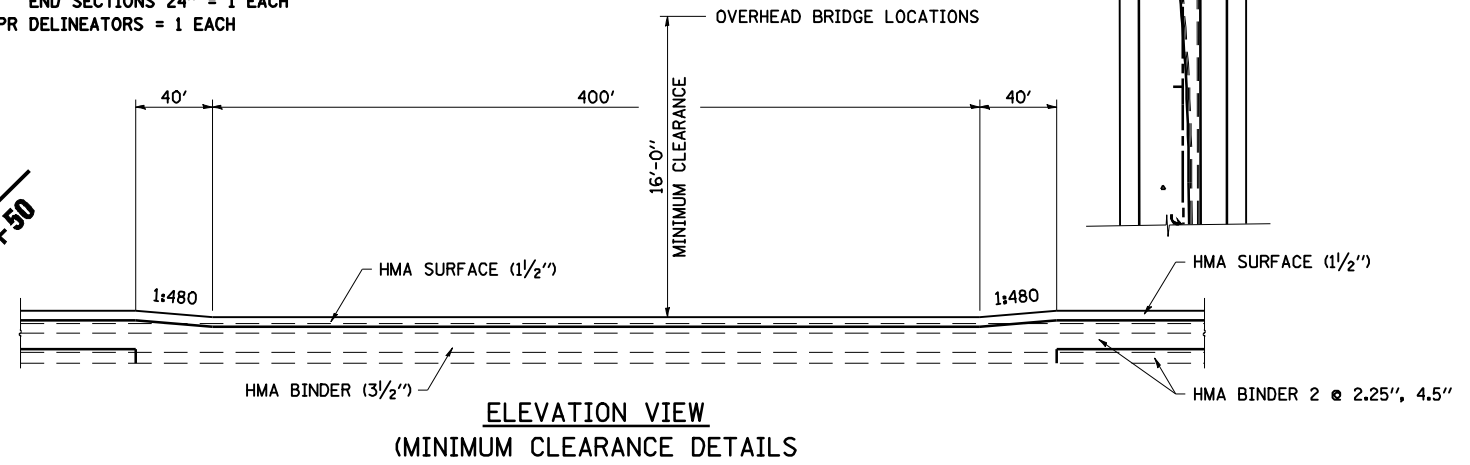
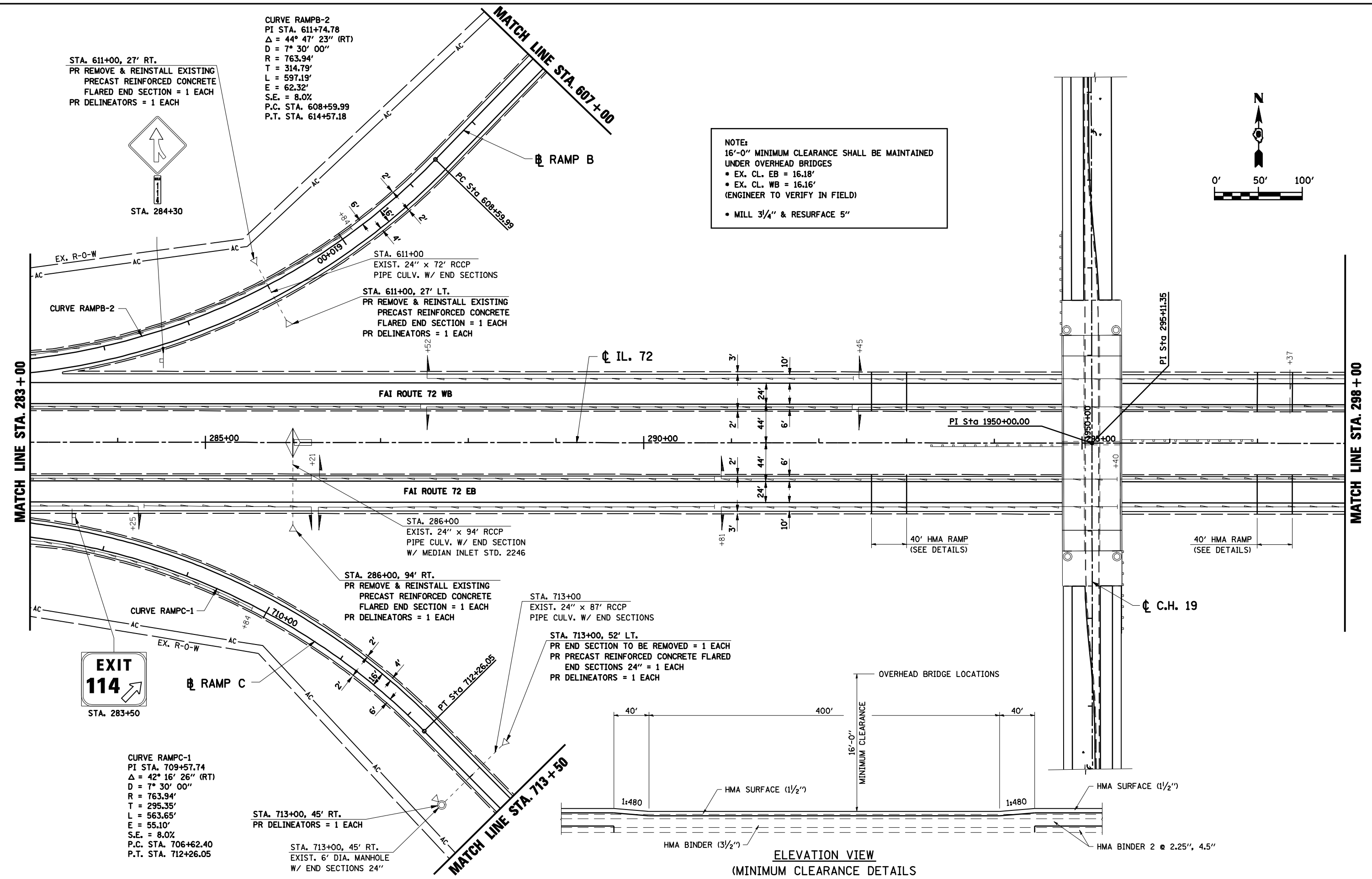
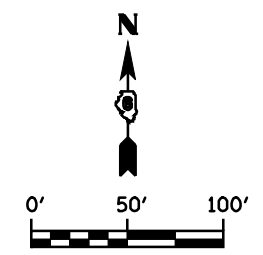
STA. 611+00, 27' RT.
 PR REMOVE & REINSTALL EXISTING
 PRECAST REINFORCED CONCRETE
 FLARED END SECTION = 1 EACH
 PR DELINEATORS = 1 EACH



STA. 284+30

CURVE RAMPB-2
 PI STA. 611+74.78
 $\Delta = 44^\circ 47' 23''$ (RT)
 $D = 7^\circ 30' 00''$
 $R = 763.94'$
 $T = 314.79'$
 $L = 597.19'$
 $E = 62.32'$
 $S.E. = 8.0\%$
 P.C. STA. 608+59.99
 P.T. STA. 614+57.18

NOTE:
 16'-0" MINIMUM CLEARANCE SHALL BE MAINTAINED
 UNDER OVERHEAD BRIDGES
 • EX. CL. EB = 16.18'
 • EX. CL. WB = 16.16'
 (ENGINEER TO VERIFY IN FIELD)
 • MILL 3/4" & RESURFACE 5"



ELEVATION VIEW
 (MINIMUM CLEARANCE DETAILS)

FILE NAME =	USER NAME = laughlinr1	DESIGNED -	REVISED -
es:\pwwork\pwwid\LAUGHLINRL\la0183140\1010TRRevised_7016PP05.SHT		DRAWN - AAD	REVISED -
PLOT SCALE = NONE		CHECKED - JAC	REVISED -
PLOT DATE = Mar-17-2010 08:16:24AM		DATE - 06/11/07	REVISED -

STATE OF ILLINOIS
 DEPARTMENT OF TRANSPORTATION

I-72 PLAN			
STA. 283+00 TO STA. 298+00			
SCALE:	SHEET NO.	OF SHEETS	STA. TO STA.

F.A.I. RTE.	SECTION	COUNTY	TOTAL SHEETS	SHEET NO.
72	(84-10-2)RS-3, (84-10-3)RS-4	SANGAMON	61	33
CONTRACT NO. 72910				
FED. ROAD DIST. NO. 2 (ILLINOIS) FED. AID PROJECT				