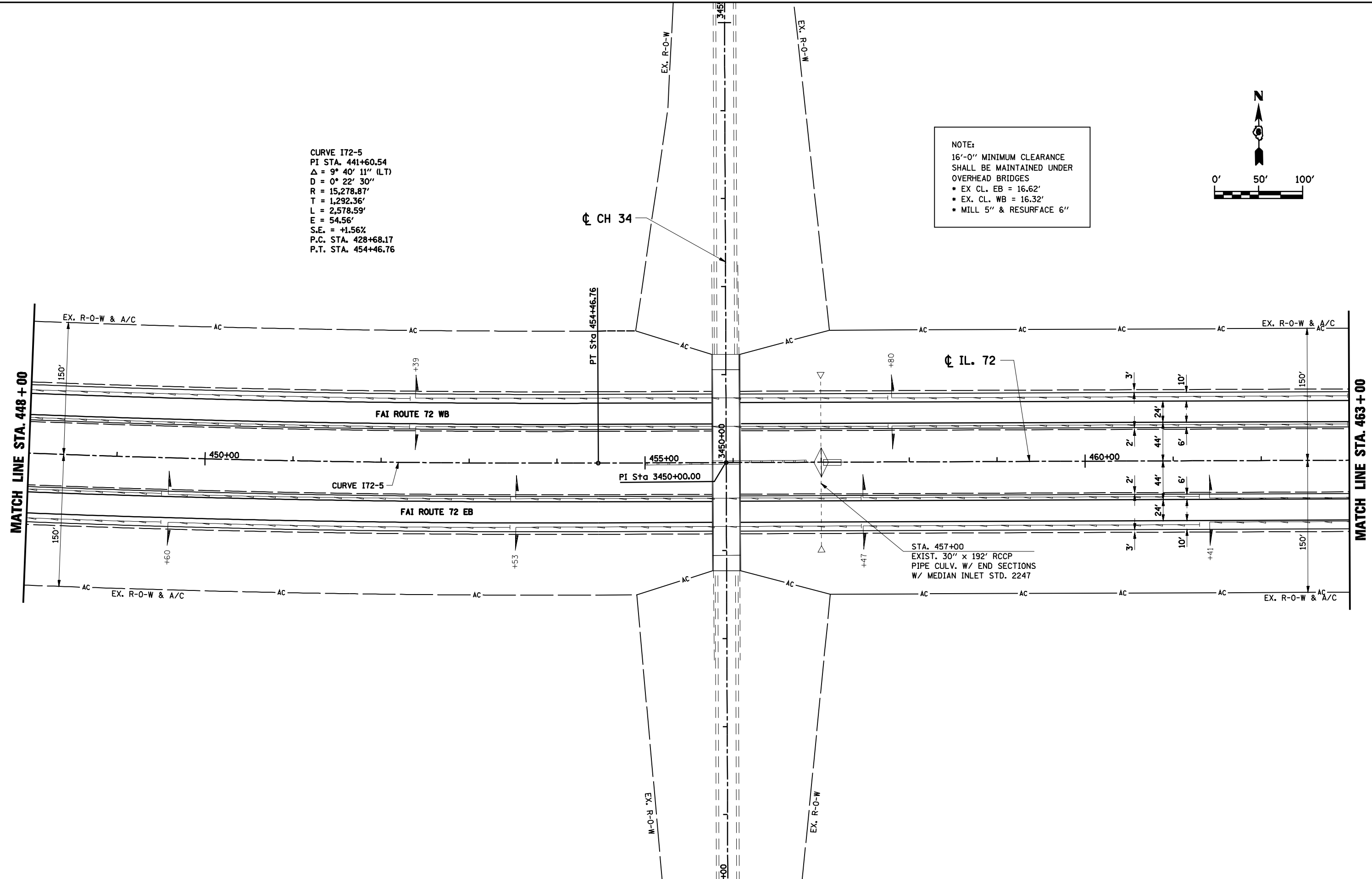
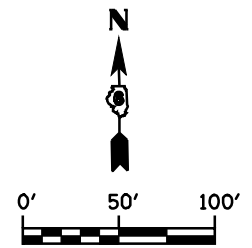


CURVE I72-5
 PI STA. 441+60.54
 $\Delta = 9^\circ 40' 11''$ (LT)
 $D = 0^\circ 22' 30''$
 $R = 15,278.87'$
 $T = 1,292.36'$
 $L = 2,578.59'$
 $E = 54.56'$
 $S.E. = +1.56\%$
 P.C. STA. 428+68.17
 P.T. STA. 454+46.76

NOTE:
 16'-0" MINIMUM CLEARANCE
 SHALL BE MAINTAINED UNDER
 OVERHEAD BRIDGES
 • EX. CL. EB = 16.62'
 • EX. CL. WB = 16.32'
 • MILL 5" & RESURFACE 6"



FILE NAME =	USER NAME = laughlinr1	DESIGNED -	REVISED -
e:\pwork\pwidot\LAUGHLINRL\0183140\DOTRevised_7016PP12.SHT		DRAWN - AAD	REVISED -
PLOT SCALE = NONE		CHECKED - JAC	REVISED -
PLOT DATE = Mar-17-2010 08:16:26AM		DATE - 06/11/07	REVISED -

**STATE OF ILLINOIS
 DEPARTMENT OF TRANSPORTATION**

**I-72 PLAN
 STA. 448+00 TO STA. 463+00**

SCALE: SHEET NO. OF SHEETS STA. TO STA.

F.A.I. RTE.	SECTION	COUNTY	TOTAL SHEETS	SHEET NO.
72	(84-10-2)RS-3, (84-10-3)RS-4	SANGAMON	61	40
CONTRACT NO. 72910				
FED. ROAD DIST. NO. 2 ILLINOIS FED. AID PROJECT				