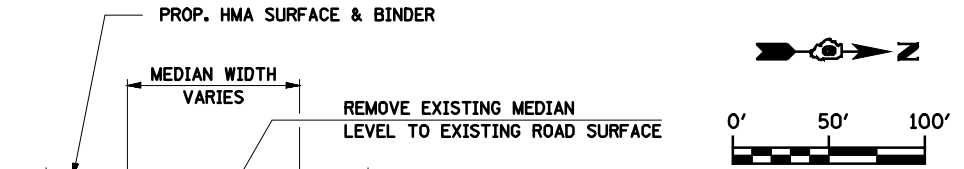


\* PR TRAFFIC BARRIER TERMINAL,  
TYPE 1 SPECIAL (TANGENT) = 1 EACH  
SEE GUARDRAIL SCHEDULE  
GUARDRAIL REMOVAL = 50 FOOT

STA. 1948+70, 28' LT.  
INLETS TO BE ADJUSTED WITH NEW  
TYPE 1 FRAME, OPEN LID = 1 EACH

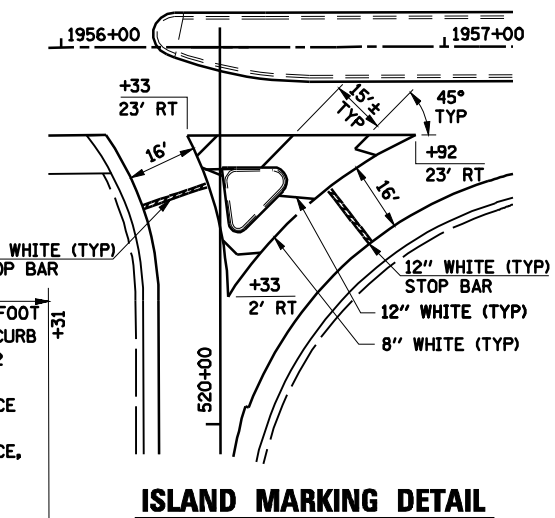
STA. 1948+70, 28' RT.  
INLETS TO BE ADJUSTED = 1 EACH

CURVE RAMPB-1  
PI STA. 604+40.05  
 $\Delta = 45^\circ 46' 54''$  (LT)  
D = 12° 00' 00"  
R = 477.46'  
T = 201.60'  
L = 381.51'  
E = 40.82'  
S.E. = 8.0%  
P.C. STA. 602+38.46  
P.T. STA. 606+19.97



STA. 1959+54, 0' RT.  
EX INLET W/ STORM SEWER 12"  
PRECAST REINFORCED FLARED  
END SECTION 12"

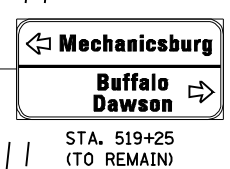
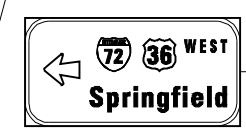
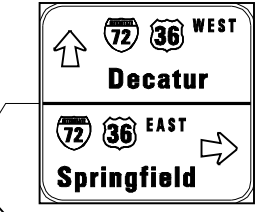
PR COMBINATION CURB AND  
GUTTER REMOVAL = 338 FOOT  
PR COMBINATION CONCRETE CURB  
AND GUTTER, TYPE B-4.12  
= 338 FOOT  
PR CONCRETE MEDIAN SURFACE  
REMOVAL = 1,013 SQ. FT.  
PR CONCRETE MEDIAN SURFACE,  
4 INCH = 1,013 SQ. FT.



PR COMBINATION CURB & GUTTER  
REMOVAL = 375 FOOT  
PR CONCRETE MEDIAN SURFACE  
REMOVAL = 466 SQ. FT.  
PR COMBINATION CONCRETE CURB AND  
GUTTER, TYPE B-4.12 = 375 FOOT  
PR CONCRETE MEDIAN SURFACE,  
4 INCH = 466 SQ. FT.

PR COMBINATION CURB & GUTTER  
REMOVAL = 351 FOOT  
PR CONCRETE MEDIAN SURFACE  
REMOVAL = 456 SQ. FT.  
PR CONCRETE MEDIAN, TYPE  
M-4.12 = 456 SQ. FT.

USE PROHIBITED BY MOTOR VEHICLE FROM IMPLEMENTS POSITIONED UNMANNED TRAFFIC BUCKLE UP



CURVE RAMP A-2  
PI STA. 516+66.03  
 $\Delta = 45^\circ 27' 09''$  (LT)  
D = 12° 00' 00"  
R = 477.46'  
T = 199.98'  
L = 378.77'  
E = 40.19'  
S.E. = 8.0%  
P.C. STA. 514+66.04  
P.T. STA. 518+44.81

END RESURFACING  
PROJECT STA. 1968 + 00

MATCH LINE STA. 1948 + 50

MATCH LINE STA. 1963 + 50

FILE NAME =	USER NAME = laughlinr1	DESIGNED -	REVISED -	<b>STATE OF ILLINOIS DEPARTMENT OF TRANSPORTATION</b>	<b>CH 19 PLAN STA. 1948 + 50.00 TO STA. 1968 + 88.94</b>				F.A.I. RTE.	SECTION	COUNTY	TOTAL SHEETS	SHEET NO.
es:\pwork\pwork\LAUGHLINR1\0184389\7016PP196.SHT		DRAWN - AAD	REVISED -		72	(84-10-2)RS-3, (84-10-3)RS-4	SANGAMON	61	46				
PLOT SCALE = NONE		CHECKED - JAC	REVISED -		CONTRACT NO. 72910								
PLOT DATE = Feb-11-2010 08:59:14AM		DATE - 06/11/07	REVISED -		SCALE:	SHEET NO.	OF SHEETS	STA.	TO STA.	FED. ROAD DIST. NO. 2 ILLINOIS FED. AID PROJECT			