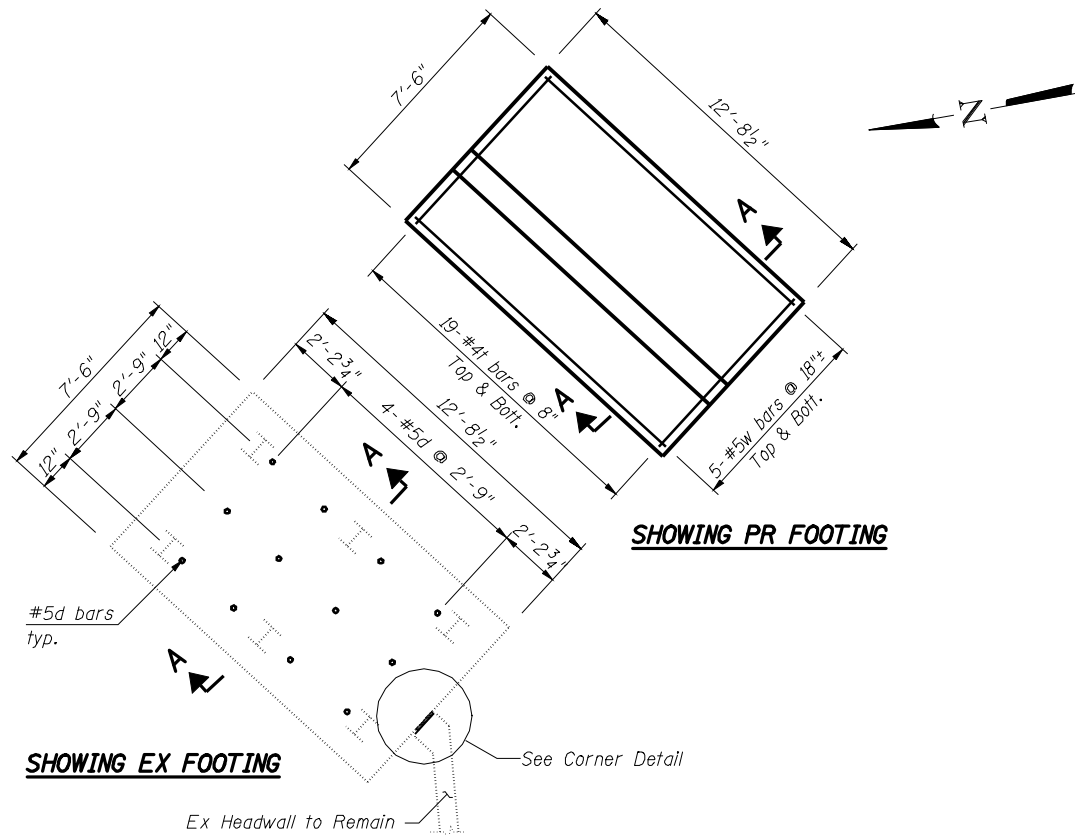
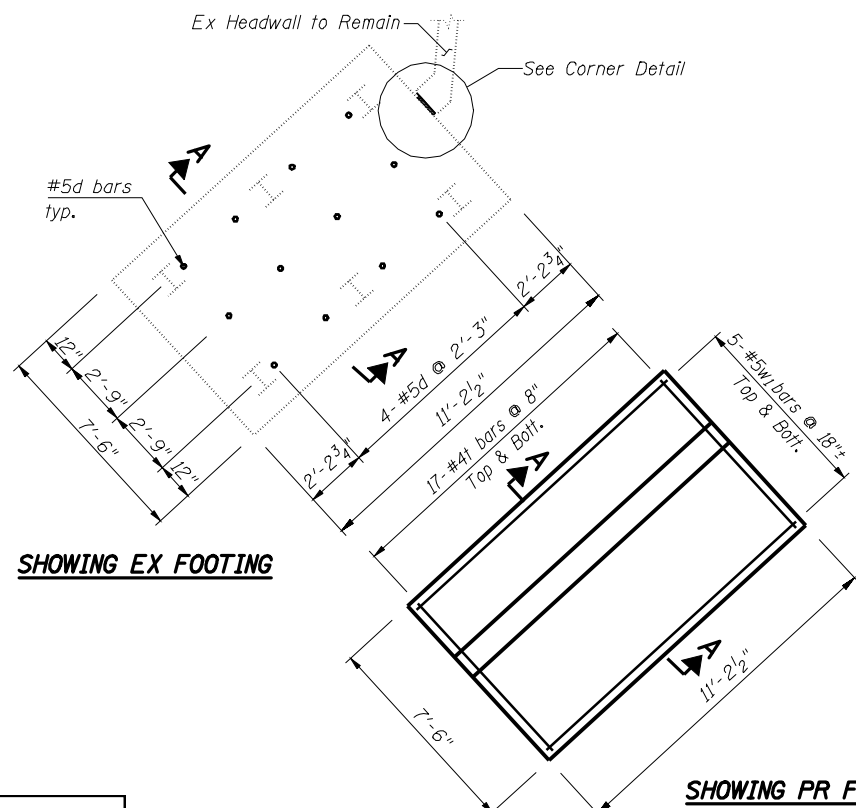


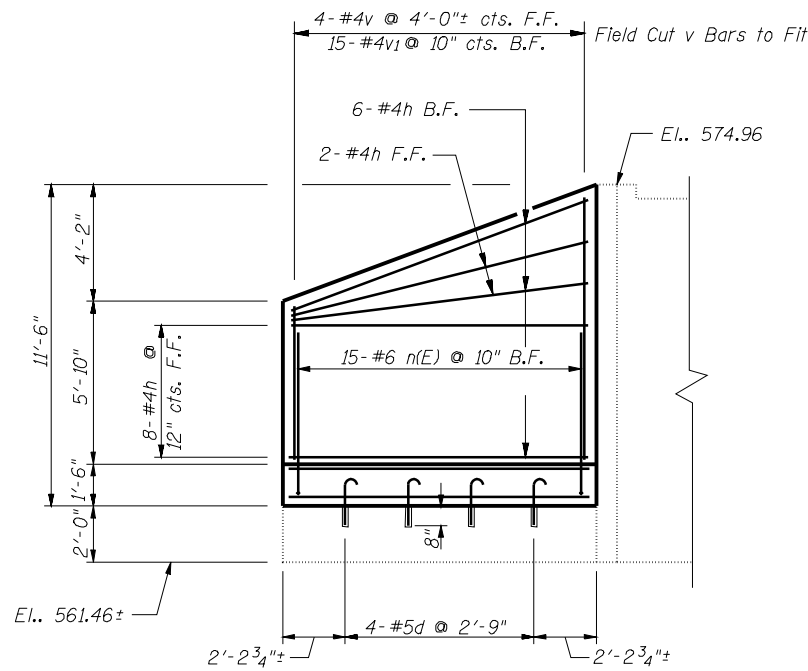
STATE OF ILLINOIS
DEPARTMENT OF TRANSPORTATION



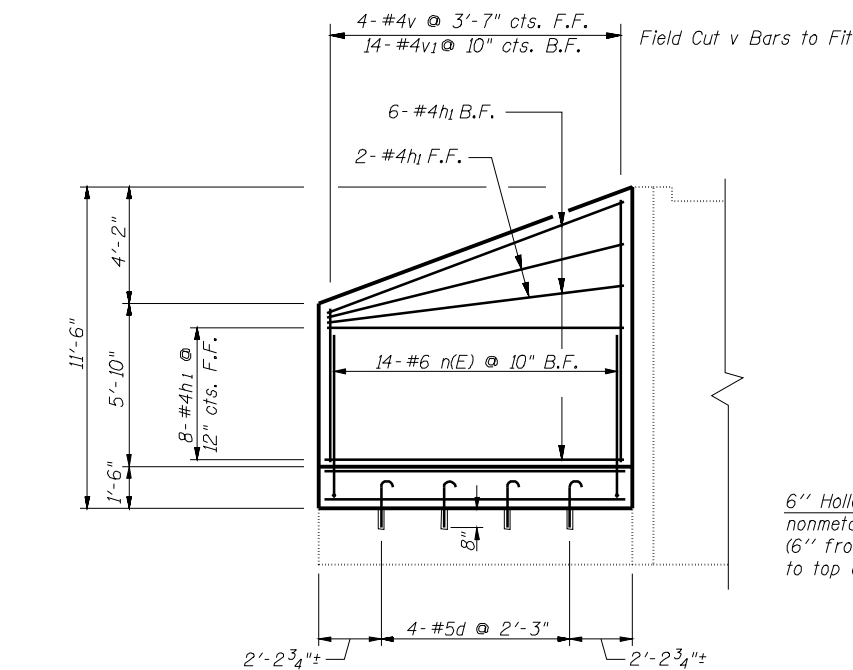
PLAN-NORTHEAST WINGWALL



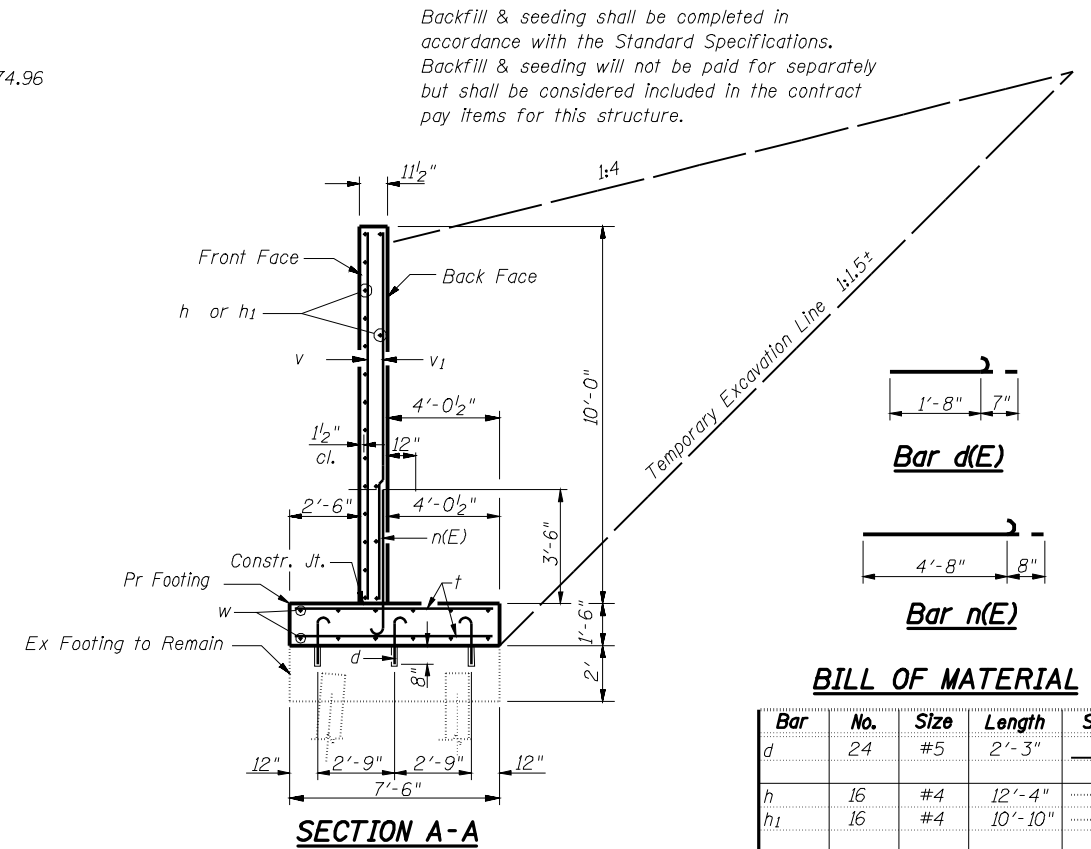
PLAN - NORTHWEST WINGWALL



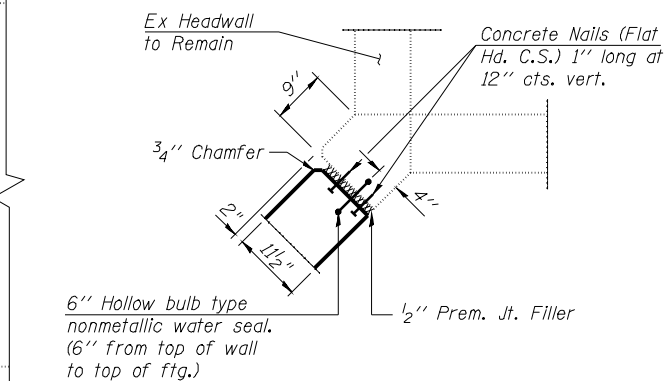
ELEVATION-NORTHEAST WINGWALL



ELEVATION - NORTHWEST WINGWALL



SECTION A-A



CORNER DETAIL

Backfill & seeding shall be completed in accordance with the Standard Specifications. Backfill & seeding will not be paid for separately but shall be considered included in the contract pay items for this structure.

BILL OF MATERIAL

Bar	No.	Size	Length	Shape
d	24	#5	2'-3"	U
h	16	#4	12'-4"	—
h1	16	#4	10'-10"	—
n(E)	29	#6	5'-4"	U
t	36	#4	7'-2"	—
v	8	#4	9'-9"	—
v1	29	#4	9'-9"	—
w	5	#5	12'-4"	—
w1	5	#5	10'-10"	—
Concrete Box Culverts			Cu. Yd.	16.7
Concrete Removal			Cu. Yd.	8.0
Reinforcement Bars, Epoxy Coated			Pound	240
Reinforcement Bars			Pound	840
Structure Excavation			Cu. Yd.	515

Notes:
Reinforcement bars designated (E) shall be epoxy coated.
Bars indicated thus 12x4-#5 etc. indicates 12 lines of bars with 4 lengths per line.

MIN. BAR LAP

#6 2'-7"

WINGWALL DETAIL
STRUCTURE NO. 084-2006

DESIGNED	SCD
CHECKED	DRB
DRAWN	THW
CHECKED	-



IE CONSULTANTS, INC
6420 SOUTH SIXTH STREET
SPRINGFIELD, ILLINOIS 62712
TEL. (217) 529-8027
FAX (217) 529-4543
IESPRINGFIELD@IE-CONSULTANTS.COM
WWW.IE-CONSULTANTS.COM

SHEET NO. 2 OF 2 SHEETS	F.A.I. RTE.	SECTION	COUNTY	TOTAL SHEETS	SHEET NO.
	72	(84-10-2) RS-3, (84-10-3) RS-4	SANGAMON	61	52
FED. ROAD DIST. NO. 2			ILLINOIS FED. AID PROJECT		
CONTRACT NO. 72910					