

EXISTING STRUCTURE:

The existing bridges are dual structures constructed on a tangent vertical alignment. The roadway is constructed on a horizontal curve with the bridges constructed parallel to the local tangent. Each bridge is 186.00' back to back of abutments with an out to out width of 42.00'. Clear width is 38.50'. The span lengths from west to east are 57.00' - 66.83' - 57.00'. The bridges are constructed on a 20.00 degree skew right ahead.

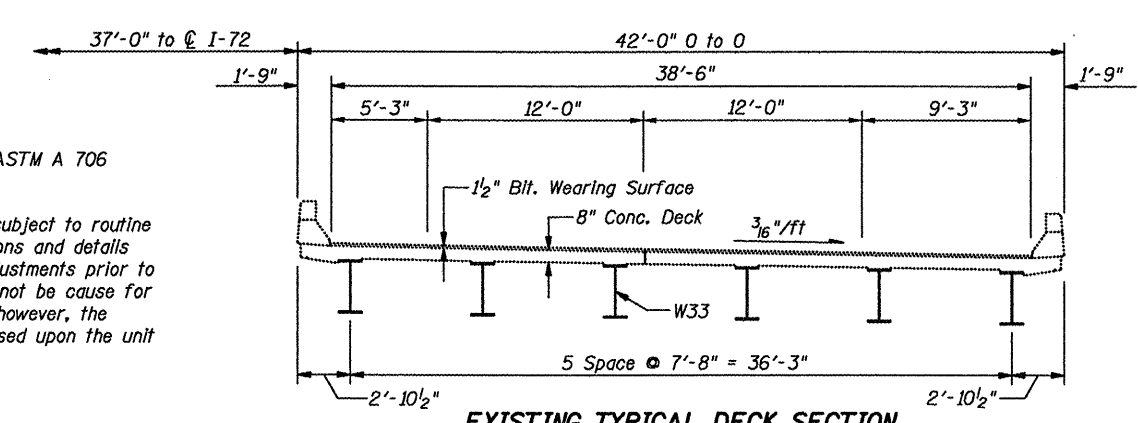
The superstructures consist of three span continuous composite steel wide flange beams and an 8" reinforced concrete deck with a 1.50" bituminous overlay. All the beams are 33" steel wide flange beams.

The substructure consists of two hammerhead type reinforced concrete piers, which rest on timber pile-supported footings and reinforced concrete pile bent abutments on concrete piles.

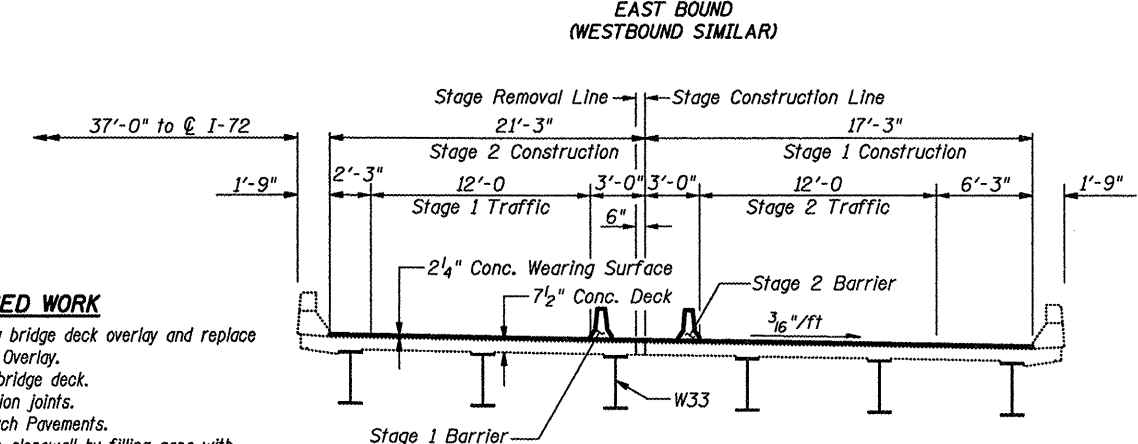
STATE OF ILLINOIS
DEPARTMENT OF TRANSPORTATION

GENERAL NOTES

Reinforcement bars shall conform to the requirements of ASTM A 706 Gr 60. See Special Provisions
Reinforcement bars designated (E) shall be epoxy coated.
Plan dimensions and details relative to existing plans are subject to routine variations. The Contractor shall field verify existing dimensions and details affecting new construction and make necessary approved adjustments prior to construction or ordering of materials. Such variations shall not be cause for additional compensation for a change in scope of the work, however, the Contractor will be paid for the quantity actually furnished based upon the unit price bid for the work.



EXISTING TYPICAL DECK SECTION
EAST BOUND
(WESTBOUND SIMILAR)



PROPOSED TYPICAL DECK SECTION
EAST BOUND
(WESTBOUND SIMILAR)

PROPOSED WORK

1. Remove existing bridge deck overlay and replace with Microsilica Overlay.
2. Patch existing bridge deck.
3. Replace expansion joints.
4. Replace Approach Pavements.
5. Repair concrete slopewall by filling gaps with controlled Low Strength Material.

TOTAL BILL OF MATERIAL

ITEM	UNIT	SUPER	SUB	TOTAL
HMA Surface Removal (Deck)	Sq. Yd.	1,574		1,574
Concrete Removal	Cu. Yd.	24.2		24.2
Concrete Structures	Cu. Yd.	57.1		57.1
Concrete Superstructures	Cu. Yd.	270.6		270.6
Reinforcement Bars, Epoxy Coated	Pound	63,320		63,320
Bar Splicers	Each	492		492
Preformed Joint Strip Seal	Foot	180		180
Temporary Concrete Barrier	Foot	1,400		1,400
Relocate Temporary Concrete Barrier	Foot	1,400		1,400
Deck Slab Repair (Full Depth Type I)	Sq. Yd.	37		37
Deck Slab Repair (Full Depth Type II)	Sq. Yd.	37		37
Bridge Deck Microsilica Concrete Overlay, 2 1/4"	Sq. Yd.	1,540		1,540
Bridge Deck Hydro-Scarification, 1/2"	Sq. Yd.	1,540		1,540
Controlled Low Strength Material	Cu. Yd.	4.0		4.0
Bridge Deck Grooving	Sq. Yd.	2,167.7		2,167.7
Protective Coat	Sq. Yd.	2,167.7		2,167.7

* Full Depth Repair quantities are estimated. Actual location and size are to be determined by the Field Engineer.
Estimated quantity of Deck Slab Repair (Partial) is 156 Sq. Yd.

DESIGN SPECIFICATIONS

2002 AASHTO Standard Specifications - 17th ed.

LOADING HS20-44

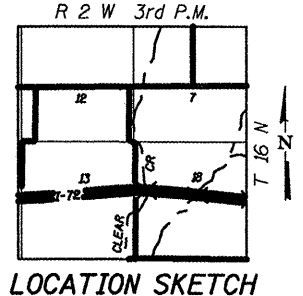
DESIGN STRESSES

Cast-in Place Units
f'c = 3,500 psi
f's = 60,000 psi
n = 9

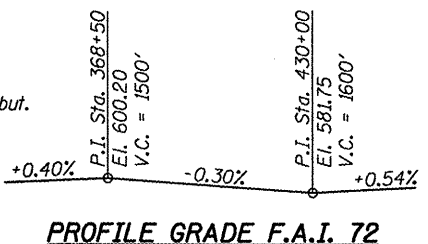
INDEX OF SHEETS

1. General Plan
2. Preformed Joint Strip Seal
3. Joint Replacement Details
4. Deck Plan
5. Bridge Approach Slab Details
6. Bridge Approach Slab Details
7. Bar Splicer Assembly and Mechanical Splicer Details

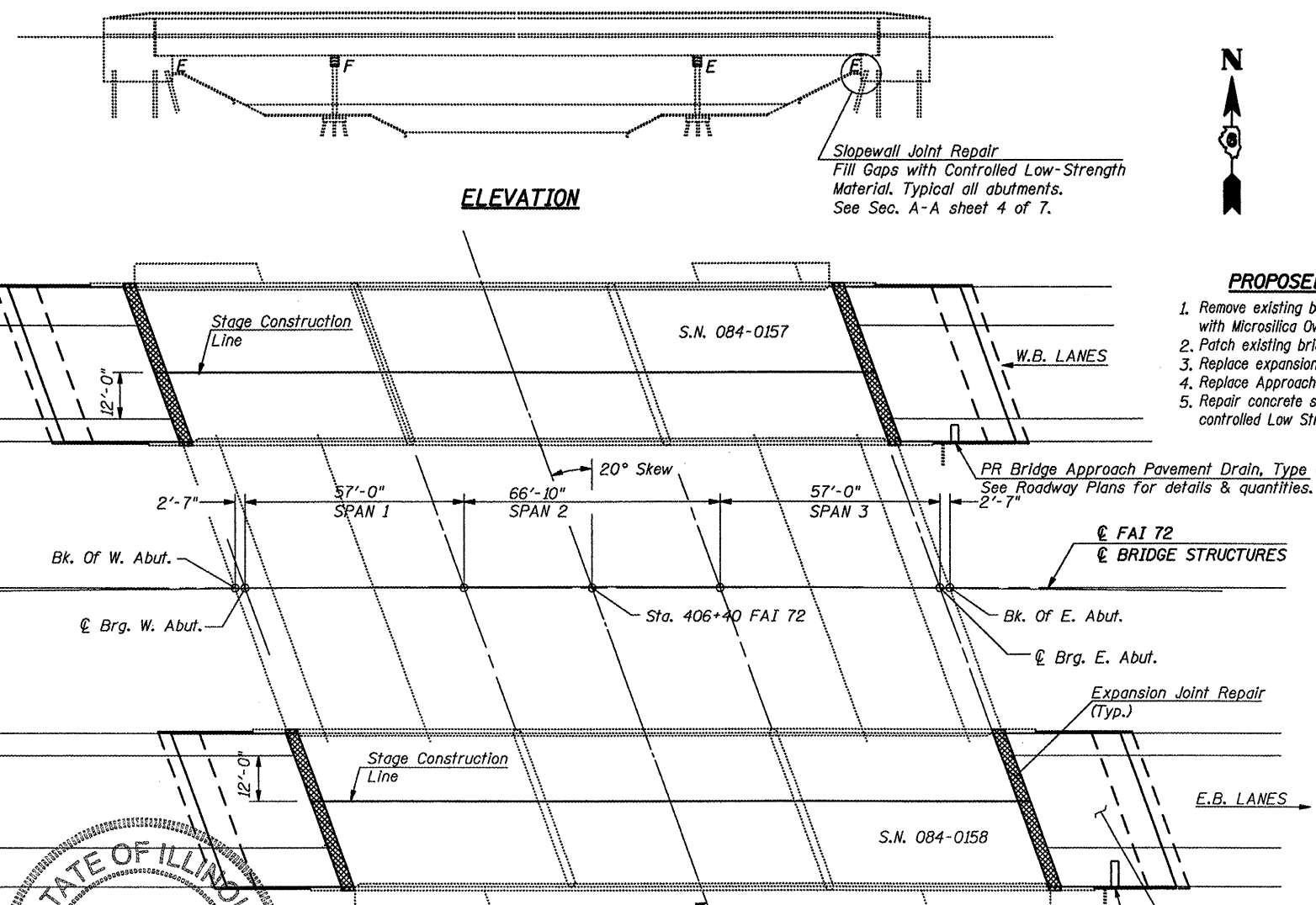
GENERAL PLAN
E.A.I. RTE. 72 OVER CLEAR CREEK
SECTION (84-10-3) RS-4
SANGAMON COUNTY
STATION 406+40.00
S.N. 084-0157 (W.B.) & 084-0158 (E.B.)



LOCATION SKETCH



PROFILE GRADE F.A.I. 72

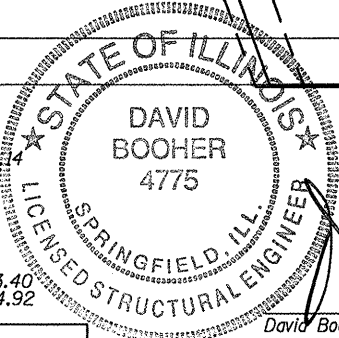


ELEVATION

PLAN

CURVE DATA

P.I. STA = 405+39.34
Δ = 19°09'27" RT
D = 0°30'00"
R = 11,459.16
T = 1933.81'
L = 3831.52'
E = 162.03'
P.C. STA = 386+23.40
P.T. STA = 424+54.92



David Booher, Illinois S.E. 081-004775
Expires 11-30-2010
IE CONSULTANTS, INC
6420 SOUTH SIXTH STREET
SPRINGFIELD, ILLINOIS 62712
TEL. (217) 529-8027
FAX (217) 529-4543
IESPRINGFIELD@IE-CONSULTANTS.COM
WWW.IE-CONSULTANTS.COM

DESIGNED	SCD
CHECKED	DRB
DRAWN	THW
CHECKED	-



SHEET NO. 1 OF 7 SHEETS	F.A.I. RTE.	SECTION	COUNTY	TOTAL SHEETS	SHEET NO.
	72	(84-10-2) RS-3, (84-10-3) RS-4	SANGAMON	61	53
			CONTRACT NO. 72910		
FED. ROAD DIST. NO. 2 ILLINOIS FED. AID PROJECT					