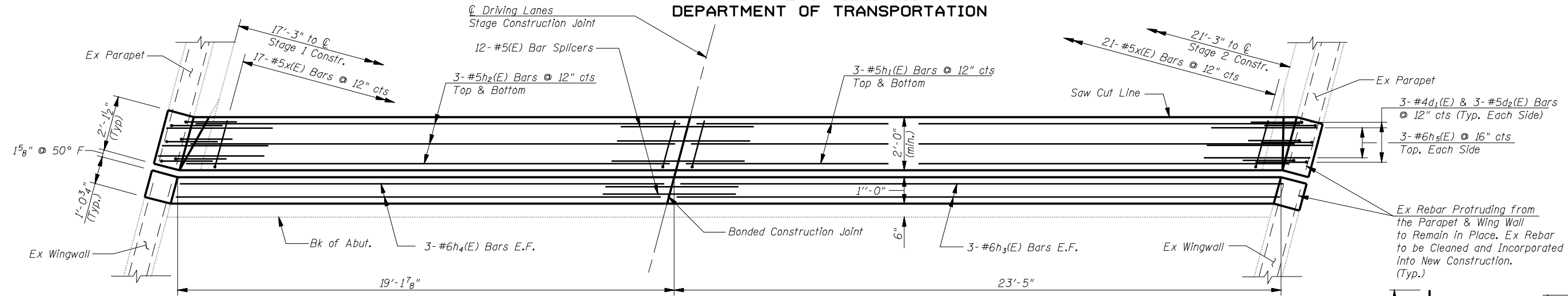
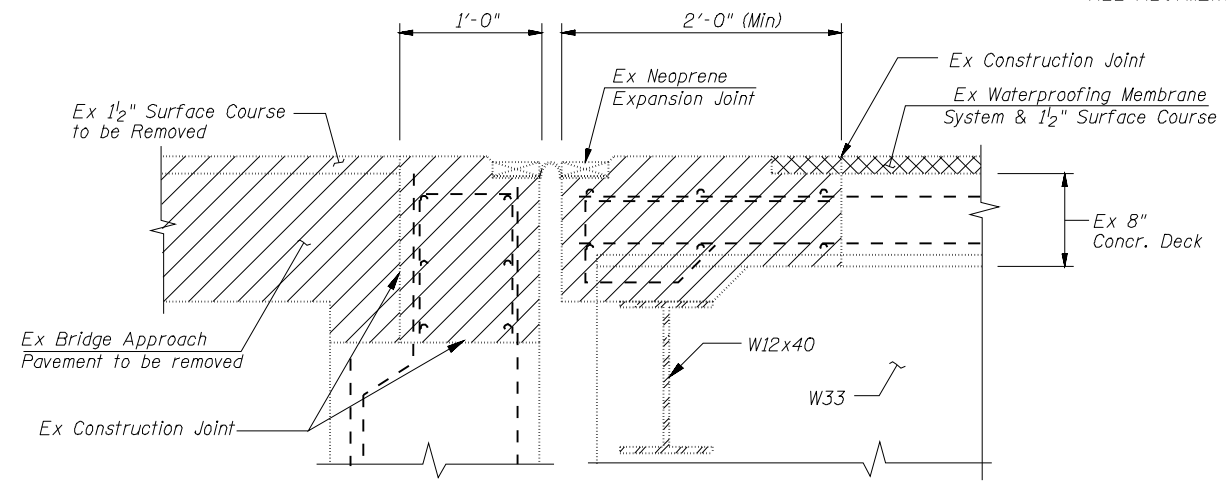


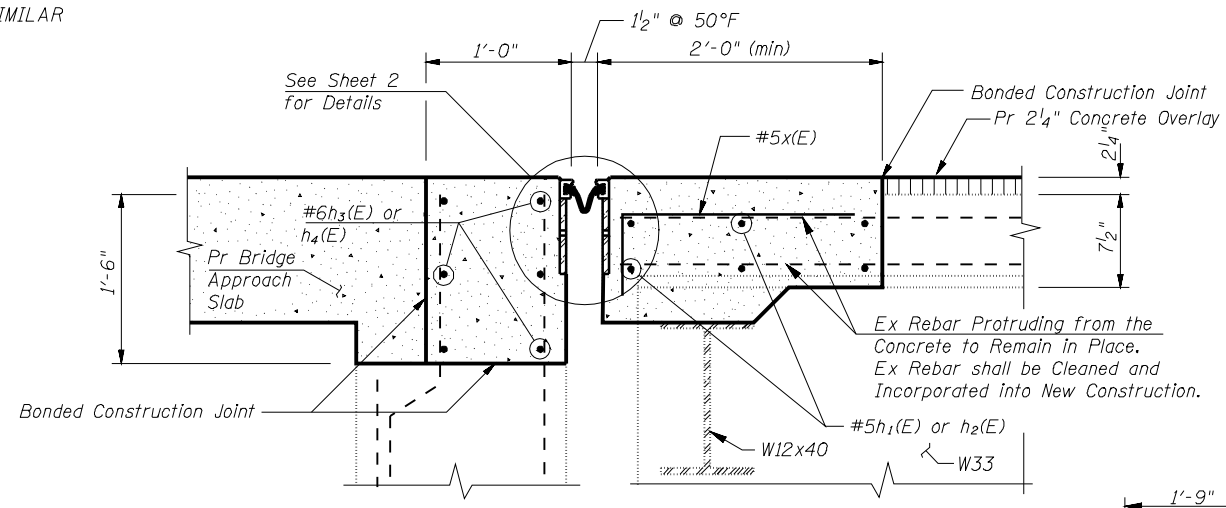
STATE OF ILLINOIS
DEPARTMENT OF TRANSPORTATION



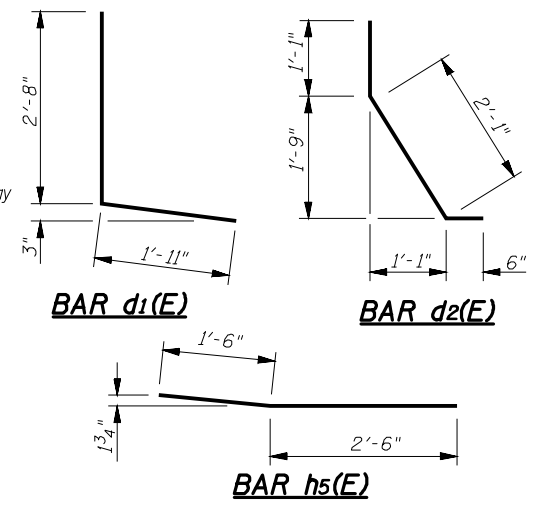
PLAN
(WEST ABUTMENT ON SOUTH BRIDGE LOOKING EAST)
ALL ABUTMENTS SIMILAR



SECTION THRU EXISTING ABUTMENT
ALL DIMENSIONS PERPENDICULAR TO JOINT



SECTION THRU PROPOSED ABUTMENT

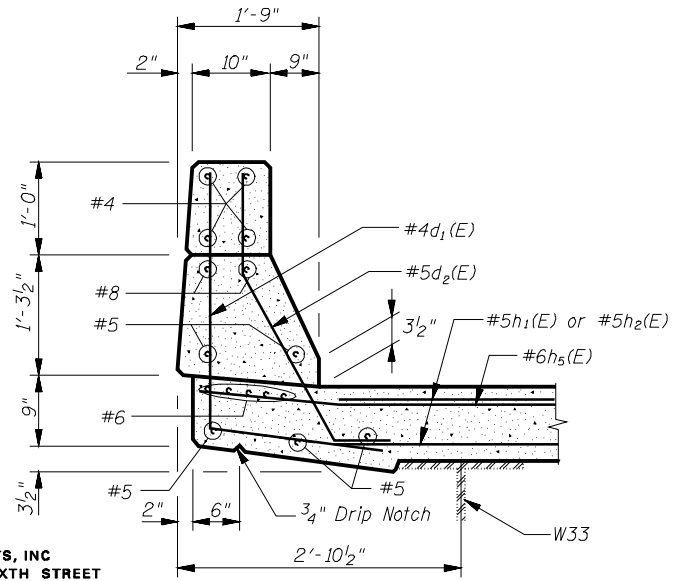


BILL OF MATERIAL

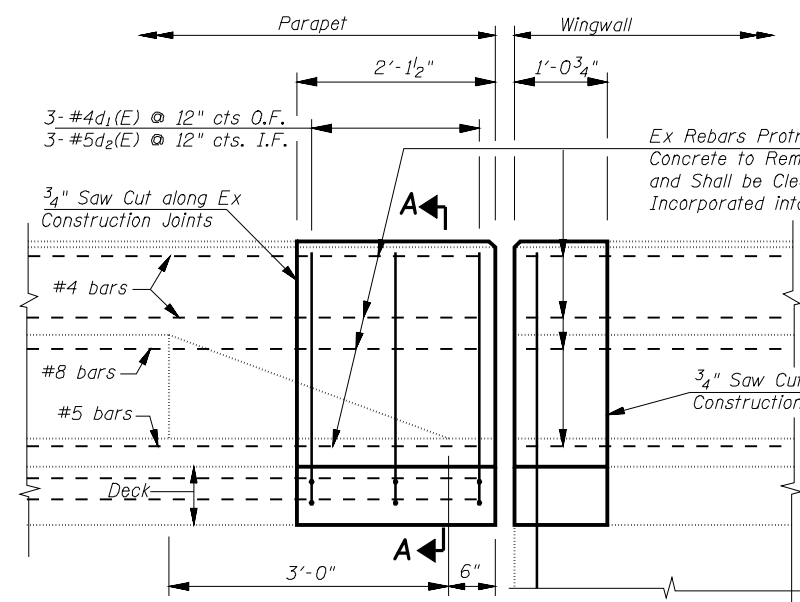
| Bar | No. | Size | Length | Shape |
|----------------------------------|-----|------|---------|-------|
| d ₁ (E) | 24 | #4 | 4'-7" | |
| d ₂ (E) | 24 | #5 | 3'-8" | |
| h ₁ (E) | 24 | #5 | 22'-6" | |
| h ₂ (E) | 24 | #5 | 18'-2" | |
| h ₃ (E) | 24 | #6 | 23'-0" | |
| h ₄ (E) | 24 | #6 | 19'-0" | |
| h ₅ (E) | 24 | #6 | 4'-0" | |
| x (E) | 152 | #5 | 2'-7" | |
| Concrete Removal | | | Cu. Yd. | 24.2 |
| Concrete Superstructures | | | Cu. Yd. | 24.2 |
| Reinforcement Bars, Epoxy Coated | | | Pound | 3,260 |
| Bar Splicers | | | Each | 48 |

Notes:
Reinforcement bars designated (E) shall be epoxy coated.
Bars indicated thus 12x4- #5 etc. indicates 12 lines of bars with 4 lengths per line.

Note
Existing reinforcement shall be cleaned and incorporated into the new construction. Cost included with Concrete Removal.



SECTION A-A



CONCRETE REMOVAL & REPLACEMENT AT PARAPET JOINT

| | |
|----------|-----|
| DESIGNED | SCD |
| CHECKED | DRB |
| DRAWN | THW |
| CHECKED | - |

ie consultants
IE CONSULTANTS, INC
6420 SOUTH SIXTH STREET
SPRINGFIELD, ILLINOIS 62712
TEL. (217) 529-8027
FAX (217) 529-4543
IESPRINGFIELD@IE-CONSULTANTS.COM
WWW.IE-CONSULTANTS.COM

| | | | | | |
|---|----------------|--------------------------------|--------------------|--------------|-----------|
| SHEET NO. 3 OF 7 SHEETS | F.A.I. RTE. | SECTION | COUNTY | TOTAL SHEETS | SHEET NO. |
| | 72 | (84-10-2) RS-3, (84-10-3) RS-4 | SANGAMON | 61 | 55 |
| | | | CONTRACT NO. 72910 | | |
| FED. ROAD DIST. NO. 2 ILLINOIS FED. AID PROJECT | | | | | |

JOINT REPLACEMENT DETAILS
S.N. 084-0157 (W.B.) & 084-0158 (E.B.)