

F.A.P. RTE.	SECTION	COUNTY	TOTAL SHEETS	SHEET NO.
658	H(RS-1), G(RS-5)	MASON	15	1
FED. ROAD DIST. NO.	ILLINOIS	CONTRACT NO. 72A45		

**STATE OF ILLINOIS
DEPARTMENT OF TRANSPORTATION
DIVISION OF HIGHWAYS**

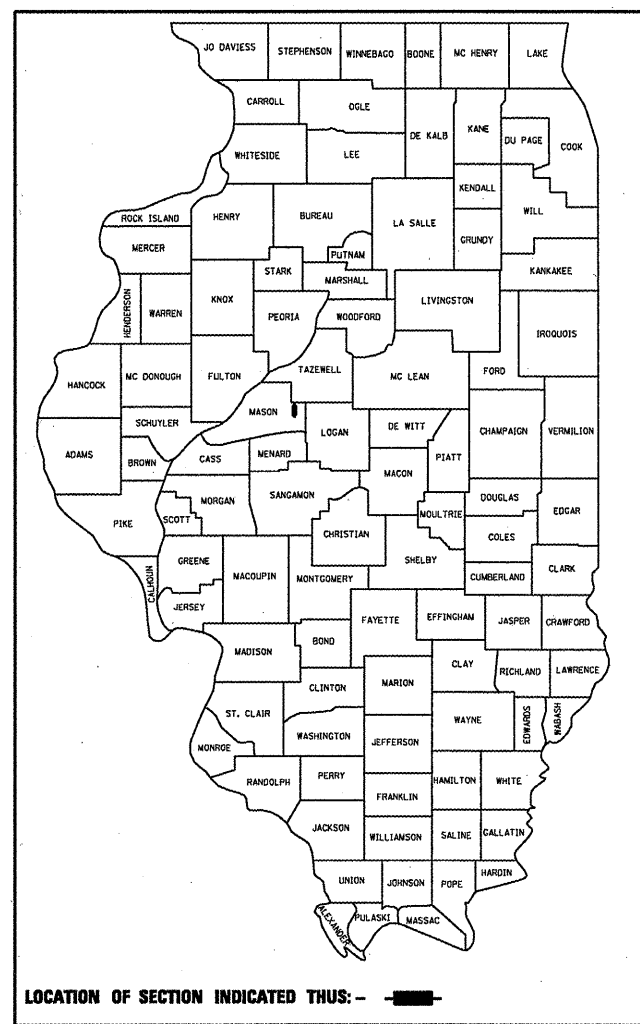
**PROPOSED
HIGHWAY PLANS**

**FAP ROUTE 658 (IL 29)
SECTION H(RS-1), G(RS-5)**

MASON COUNTY

C-96-079-08

D-96-521-06



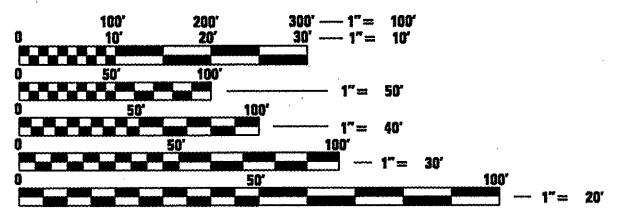
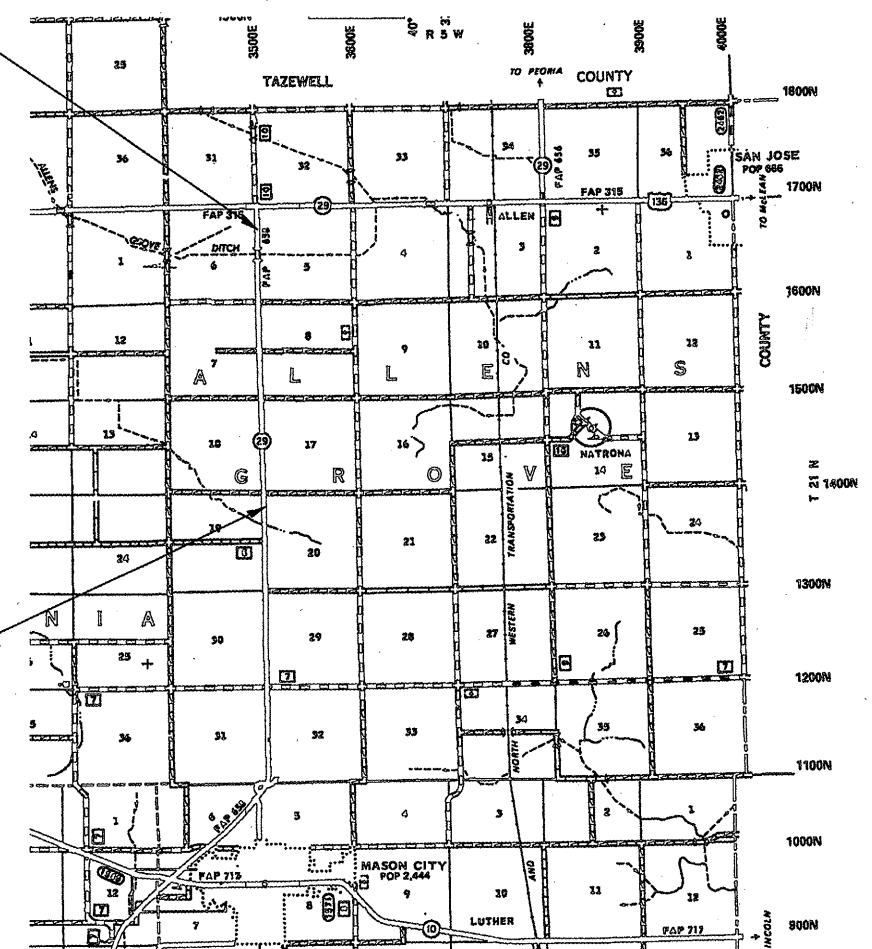
- INDEX OF SHEETS**
1. COVER SHEET
 2. GENERAL NOTES
 3. SUMMARY OF QUANTITIES
 - 4-6. TYPICAL SECTIONS
 7. SCHEDULE OF QUANTITIES
 - 8-13. PLAN SHEETS
 - 14-15. DETAILS

HIGHWAY CLASSIFICATION IL 29

FUNCTIONAL CLASS: MINOR ARTERIAL
ADT - 1100
CRS - 5.3
PV - 85%
SU - 10%
MU - 5%

**STA. 667 + 95.00
END IMPROVEMENT**

**STA. 511 + 00.00
BEGIN IMPROVEMENT**



FULL SIZE PLANS HAVE BEEN PREPARED USING STANDARD ENGINEERING SCALES. REDUCED SIZED PLANS WILL NOT CONFORM TO STANDARD SCALES. IN MAKING MEASUREMENTS ON REDUCED PLANS, THE ABOVE SCALES MAY BE USED.

J.U.L.I.E.
JOINT UTILITY LOCATION INFORMATION FOR EXCAVATION
1-800-892-0123
OR 811

PROJECT ENGINEER: JOHN NEGANGARD (217) 782-9660
PROJECT MANAGER: VICTOR YOUNG (217) 557-7897

CONTRACT NO. 72A45

TOTAL PROJECT LENGTH = 15695.0 FEET = 2.97 MILES

**STATE OF ILLINOIS
DEPARTMENT OF TRANSPORTATION
DIVISION OF HIGHWAYS**

SUBMITTED *February 3, 2010*
Roger J. Dinkell
 DEPUTY DIRECTOR OF HIGHWAYS, REGION ENGINEER

March 19, 2010
Scott E. Still P.E. (RD)
 ACTING ENGINEER OF DESIGN AND ENVIRONMENT

March 19, 2010
Christine M. Reed (RD)
 DIRECTOR OF HIGHWAYS, CHIEF ENGINEER

**PRINTED BY THE AUTHORITY
OF THE STATE OF ILLINOIS**